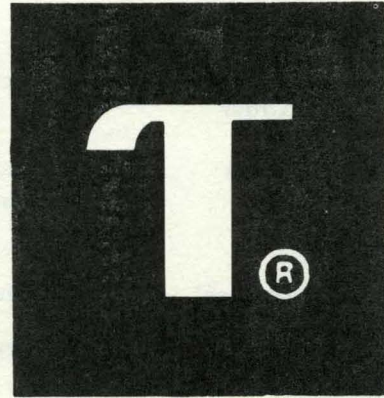
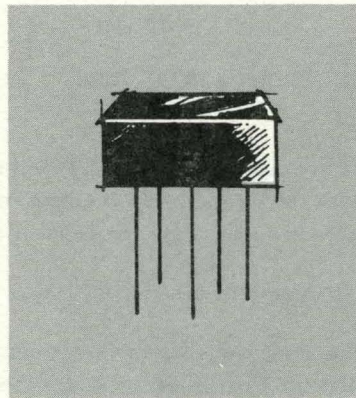
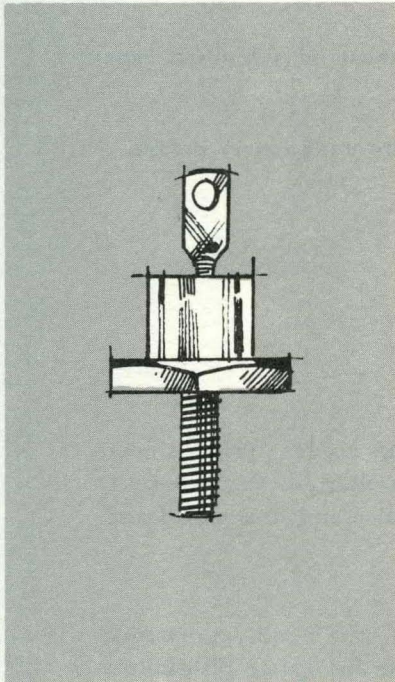
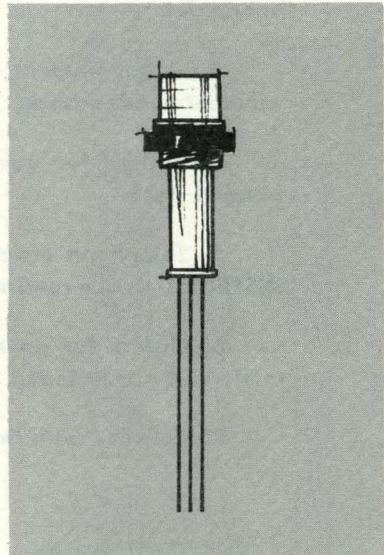
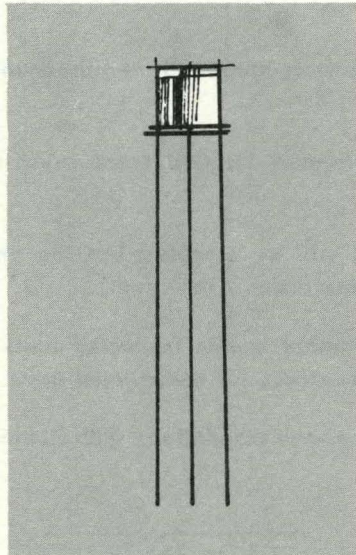
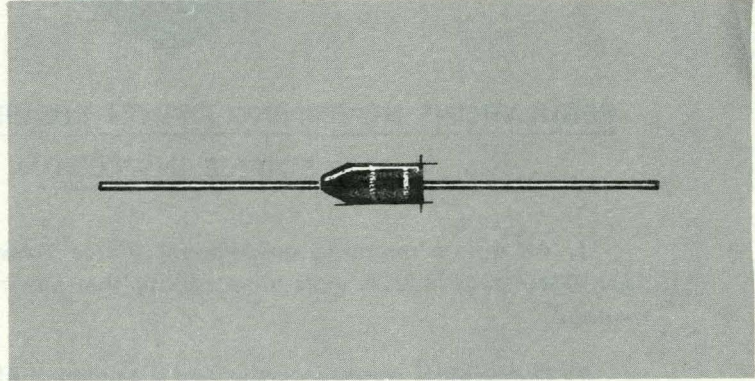
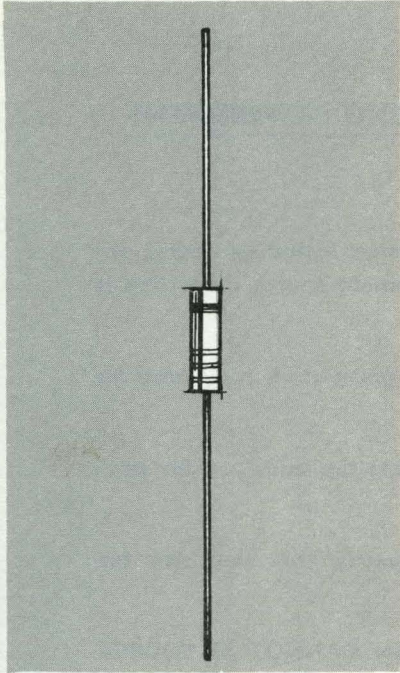


9/66

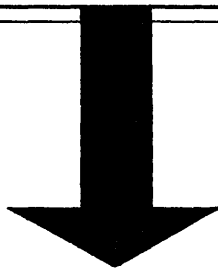
EFFECTIVE MAY 5, 1966

Transitron

EQUIPMENT MANUFACTURER'S PRICE LIST



Transitron electronic corporation
wakefield, melrose, boston, mass.



REGULATIONS GOVERNING ORDERS REQUIRING GOVERNMENT
SOURCE INSPECTION

1. All orders requiring government source inspection including orders for JAN, USN, USAF & USA units must specify that government source inspection is required.
2. The original purchase order and a minimum of one carbon copy must be submitted.
3. A government contract number is required unless the units are for government bonded stock.
4. Orders for government bonded stock must specify that they are for bonded stock.
5. Telephone orders will be accepted but the order **CANNOT BE SOURCE INSPECTED** until a confirming order is received.
6. Orders for government source inspected units must be submitted separately and not included on orders for commercial units.

Compliance with the above regulations will eliminate unnecessary delays.

**Minimum
Factory
Order**

Minimum Factory Order \$25.00 Total.

Prices

Published prices are subject to change without notice. Prices shown are F.O.B. factory at Wakefield, Melrose or Boston, Massachusetts. Prices do not include local, state, or federal sales and/or excise taxes.

Payment

Standard terms of payment are net 30 days.

Delivery

For prompt off-the-shelf delivery of quantities 1 to 999 call your nearest authorized Transitron distributor. A complete listing of distributors can be found on the back cover.

+ Denotes Price Increase
- Denotes Price Reduction
@Denotes New Type

*Breakdown is for quantities of 1-24 and 25-99
**Breakdown is for quantities of 1-9, 10-24 and 25-99

Transitron SEMICONDUCTORS

TYPE	UNIT PRICE		TYPE	UNIT PRICE		TYPE	UNIT PRICE	
	1-99	100-999		1-99	100-999		1-99	100-999
DIODES								
1/2Z3.3T5			1N108	.78	.70	1N306	1.15	.95
THRU	4.50	3.00	1N111	.95	.75	1N307	1.23	.99
1/2Z100T5			1N112	.87	.65	1N308	.60	.48
1N34	.30	.23	1N113	1.13	.85	1N309	.85	.72
1N34A	.30	.23	1N114	.87	.65	1N310	.82	.70
1N36	.30	.21	1N115	.64	.50	1N312	.76	.58
1N38	.49	.38	1N116	.49	.36	1N313	1.05	.79
1N38A	.49	.38	1N117	.51	.38	1N314	1.30	1.10
1N38B	.49	.38	1N118	.23	.20	1N316	.85	.57
1N40	5.00	3.50	1N118A	.60	.47	1N316A	.85	.57
1N42	6.00	4.50	1N119	.51	.40	1N317	1.00	.70
1N44	.49	.38	1N120	.46	.36	1N317A	1.00	.70
1N45	.42	.31	1N126	.30	.24	1N318	1.35	.85
1N46	.28	.20	1N127, A	.42	.28	1N318A	1.35	.85
1N48	.30	.20	1N135	.35	.26	1N319	1.75	1.15
1N49	.35	.26	1N139 (T1)	.27	.20	1N319A	1.75	1.15
1N50	.41	.32	1N140 (T2)	.38	.29	1N320	2.50	1.60
1N51	.30	.22	1N144 (T6)	.68	.51	1N320A	2.50	1.60
1N52	.53	.40	1N145 (S62)	.70	.52	1N321	3.20	2.45
1N52A	.36	.27	1M175	.84	.69	1N321A	3.20	2.45
1N54	.42	.32	1N191	.35	.28	1N322	4.35	3.35
1N54A	.42	.32	1N192	.34	.26	1N322A	4.35	3.35
1N56	.39	.31	1N198	.35	.28	1N323	.85	.57
1N56A	.44	.36	1N198A	.35	.28	1N323A	.85	.57
1N57	.40	.30	1N198B	1.03	.78	1N324	1.00	.70
1N57A	.40	.30	+1N248	1.40	1.00	1N324A	1.00	.70
1N58	.55	.41	+1N248A	1.40	1.00	1N325	1.35	.85
1N58A	.55	.41	+1N248B	1.40	1.00	1N325A	1.35	.85
1N60	.30	.23	+1N249	1.95	1.40	1N326	1.75	1.15
1N60A	.40	.29	+1N249A	1.95	1.40	1N326A	1.75	1.15
1N61	.65	.47	+1N249B	1.95	1.40	1N327	2.50	1.60
1N62	.70	.52	1N250	2.45	1.65	1N327A	2.50	1.60
1N63	.36	.28	1N250A	2.45	1.65	1N328	3.25	2.50
1N63A	.90	.60	1N250B	2.45	1.65	1N328A	3.25	2.50
1N65	.48	.35	JAN1N251	2.00	1.50	1N329	4.60	3.50
1N66	.30	.21	1N252	1.25	.90	1N329A	4.60	3.50
1N66A	.30	.21	1N253	1.05	.70	1N332	1.72	1.15
1N67	.23	.21	1N254	1.12	.75	1N333	1.72	1.15
1N67A	.28	.21	1N255	1.72	1.15	1N334	1.42	.95
1N67B	1.03	.78	1N256	2.40	1.60	1N335	1.42	.95
1N68	.28	.21	1N265	.35	.26	1N336	1.12	.75
1N68A	.28	.21	1N266	.28	.19	1N337	1.12	.75
1N69	.30	.23	1N267	.26	.17	1N338	1.05	.70
1N69A	.30	.23	1N270 (T7G)	.32	.25	1N339	1.05	.70
1N70	.48	.38	JAN1N270	.32	.25	1N340	1.05	.70
1N70A	.48	.38	1N273 (T11G)	.66	.50	1N341	1.72	1.15
1N71	5.00	3.50	1N274	2.00	1.50	1N342	1.72	1.15
1N73	5.00	3.50	1N275	1.70	1.25	1N343	1.42	.95
1N74	5.00	3.50	1N276 (T16G)	.31	.24	1N344	1.42	.95
1N75	.90	.60	JAN1N276	.31	.24	1N345	1.12	.75
1N81	.48	.38	1N277 (T17G)	.34	.26	1N346	1.12	.75
1N81A	.48	.38	JAN1N277	.34	.26	1N347	1.05	.70
1N84	.32	.23	JAN1N277H	.85	.65	1N348	1.05	.70
1N86	.35	.26	1N278 (T18G)	.88	.65	1N349	1.05	.70
1N87	.20	.16	1N279 (T6G)	.29	.22	1N355	.52	.37
1N87A	.35	.26	1N280	1.25	.90	1N359	.85	.57
1N88	.92	.65	1N281	.31	.24	1N359A	.85	.57
1N89	.60	.45	1N282	1.25	.90	1N360	1.00	.70
1N90	.33	.27	1N283 (T25G)	.51	.40	1N360A	1.00	.70
1N95	.51	.34	1N287	.30	.21	1N361	1.35	.85
1N96	.59	.44	1N288	.41	.32	1N361A	1.35	.85
1N96A	.59	.44	1N289	.47	.38	1N362	1.75	1.15
1N97	.69	.52	1N290	.53	.44	1N362A	1.75	1.15
1N97A	.71	.54	1N291	.55	.46	1N363	2.50	1.60
1N98	.31	.24	1N294	.34	.26	1N363A	2.50	1.60
1N98A	.31	.24	1N294A	.45	.35	1N364	3.00	2.25
1N99	.50	.39	1N295	.35	.27	1N364A	3.00	2.25
1N99A	.54	.43	1N297	.34	.26	1N365	4.00	3.00
1N100	.32	.27	1N297A	.34	.26	1N365A	4.00	3.00
1N100A	.32	.27	1N298	.31	.23	1N417	.76	.57
1N103	.28	.19	1N298A	.39	.30	1N418	.66	.43
1N104	.31	.22	1N303	.79	.62	1N419	.53	.39
1N107	.95	.72	1N303A	.84	.67	1N429	5.40	4.10
			1N304	.71	.56	JAN1N429	7.25	5.50
			1N305	.91	.73	1N440	.66	.44

Transitron SEMICONDUCTORS

TYPE	UNIT PRICE		TYPE	UNIT PRICE		TYPE	UNIT PRICE	
	1-99	100-999		1-99	100-999		1-99	100-999
1N440B	.66	.44	1N535	.96	.60	1N663	1.20	.80
1N441	.69	.46	+1N536	.47	.28	JAN1N663	1.20	.80
1N441B	.69	.46	+1N537	.52	.31	1N676	.79	.62
1N442	.79	.53	1N538	.53	.34	1N677	1.05	.70
1N442B	.79	.53	JAN1N538	.75	.50	1N678	1.23	.82
1N443	.97	.65	1N539	.59	.39	1N679	1.35	.90
1N443B	.97	.65	1N540	.68	.43	1N681	1.53	1.02
1N444	1.05	.70	JAN1N540	1.05	.70	1N682	1.65	1.10
1N444B	1.05	.70	1N547	.96	.60	1N683	1.80	1.20
1N445	1.42	.95	JAN1N547	1.50	1.05	1N684	1.88	1.25
1N445B	1.42	.95	1N550	1.05	.70	1N685	2.10	1.40
1N447	.40	.29	1N551	1.12	.75	1N686	2.25	1.50
1N448	.43	.32	1N552	1.42	.95	1N687	2.40	1.60
1N449	.48	.37	1N553	1.72	1.15	1N689	2.50	1.65
1N450	.56	.45	1N554	1.80	1.20	1N690	2.86	1.92
1N451	1.88	1.53	1N555	2.40	1.60	1N691	3.38	2.25
1N452	.60	.45	1N560	1.25	.75	1N692	4.28	2.85
1N453	.63	.48	1N561	2.00	1.20	1N693	6.00	4.05
1N454	.73	.59	1N562	4.00	2.80	1N695	.30	.24
1N455	.85	.68	1N563	6.00	4.05	1N695A	.98	.74
1N456	.37	.29	1N571	.79	.58	1N696	2.10	1.55
1N456A	.37	.29	1N588	6.50	5.30	1N699	1.00	.75
1N457	.36	.30	1N589	8.50	7.00	1N702		
JAN1N457	.36	.30	+1N599	.47	.28	THRU	1.50	1.25
1N457A	.36	.30	1N599A	.54	.36	1N721		
1N458	.48	.32	+1N600	.52	.31	1N702A		
JAN1N458	.48	.32	1N600A	.63	.42	THRU	1.75	1.50
1N458A	.48	.32	+1N601	.54	.32	1N716A		
1N459	.51	.34	1N601A	.65	.43	@1N717		
JAN1N459	.51	.34	+1N602	.56	.36	THRU	1.50	1.25
1N459A	.51	.34	1N602A	.66	.44	@1N721		
1N461	.35	.28	1N603	.59	.39	1N717A		
1N461A	.35	.28	1N603A	.79	.53	THRU	1.75	1.50
1N462	.38	.30	1N604	.81	.54	1N721A		
1N462A	.38	.30	1N604A	1.28	.95	@1N722		
1N463	.46	.36	1N605	.76	.51	THRU	1.65	1.40
1N463A	.46	.36	1N605A	1.52	1.02	@1N737		
1N464	.45	.35	1N606	.96	.60	@1N722A		
1N464A	.45	.35	1N606A	1.92	1.20	THRU	1.90	1.65
1N476	.45	.33	1N607, A	1.05	.70	@1N737A		
1N477	.45	.33	1N608, A	1.05	.70	1N746		
1N478	.48	.35	1N609, A	1.05	.70	THRU	1.50	1.25
1N479	.48	.35	1N610, A	1.10	.75	1N759		
1N482A	.59	.46	1N611, A	1.42	.95	1N746A		
1N482B	.59	.46	1N612, A	1.72	1.15	THRU	1.75	1.50
1N483	.61	.47	1N613, A	1.80	1.20	1N759A		
1N483A	.61	.47	1N614, A	2.40	1.60	USN1N746A		
1N483B	.61	.47	1N616	.43	.34	THRU	2.90	2.20
JAN1N483B	.61	.47	1N617	.49	.37	USN1N759A		
1N484	.61	.47	1N618	.54	.40	1N761 (SV5)	1.55	1.30
1N484A	.61	.47	1N625	.43	.29	1N761-1		
1N484B	.61	.47	1N626	.43	.30	THRU	1.80	1.55
1N485	.77	.55	1N627	.60	.39	1N769-1		
1N485A	.77	.55	1N628	.72	.47	(5 PCT. TOL.)		
1N485B	.77	.55	1N629	.86	.55	1N761-2		
JAN1N485B	.77	.55	1N631	.80	.63	THRU	1.80	1.55
1N486A	.85	.65	1N632	.72	.56	1N769-2		
1N486B	.85	.65	1N633	.83	.65	(5 PCT. TOL.)		
JAN1N486B	.85	.65	1N634	.52	.41	1N761-3		
1N487	.90	.70	1N636	.38	.27	THRU	1.80	1.55
1N487A	1.20	.94	1N643	1.45	1.00	1N769-3		
1N488	1.05	.78	JAN1N643	1.45	1.00	(5 PCT. TOL.)		
1N488A	1.54	1.19	1N645	1.40	.93	1N761-3		
1N497	.39	.30	1N645A	1.65	1.10	THRU	1.80	1.55
1N498	.44	.35	1N646	1.65	1.10	1N769-3		
1N499	.49	.37	1N647	1.80	1.20	(5 PCT. TOL.)		
1N500	.53	.41	1N648	1.95	1.30	1N762 (SV6)	1.55	1.30
1N501	.69	.52	1N649	2.50	1.65	1N763 (SV7)	1.55	1.30
1N502	.83	.67	1N658	1.76	1.20	1N764 (SV9)	1.55	1.30
1N527	.43	.33	USA1N658	1.76	1.20	1N765 (SV11)	1.55	1.30
1N530	.50	.32	1N659	.58	.39	1N766 (SV13)	1.55	1.30
1N531	.53	.34	1N660	.69	.46			
1N532	.59	.39	1N661	1.75	1.30			
1N533	.68	.43	1N662	.66	.44			
1N534	.76	.51	JAN1N662	.90	.60			

Transitron SEMICONDUCTORS

TYPE	UNIT PRICE		TYPE	UNIT PRICE		TYPE	UNIT PRICE	
	1-99	100-999		1-99	100-999		1-99	100-999
1N767 (SV15)	1.55	1.30	1N877	2.60	1.95	1N946	51.10	40.00
1N768 (SV18)	1.55	1.30	1N878	3.00	2.35	1N946A	60.30	47.50
1N769 (SV24)	1.55	1.30	1N879	.40	.30	1N946B	66.50	52.50
1N770	.48	.38	1N880	.50	.38	1N949	.65	.50
1N771	.80	.66	1N881	.60	.45			
1N771A	.88	.70	1N882	.65	.50	1N957		
1N771B	1.30	1.00	1N883	.90	.65	THRU	1.40	1.00
1N772	.45	.36	1N884	1.20	.90	1N973		
1N772A	.53	.42	1N885	1.30	.97	1N957A		
1N773	.32	.25	1N886	1.40	1.00	THRU	1.50	1.10
1N773A	.47	.37	1N887	1.65	1.25	1N973A		
1N774	.38	.29	1N888	2.00	1.50	1N957B		
1N774A	.44	.36	1N889	2.30	1.70	THRU	1.75	1.50
1N775	.36	.27	1N903	1.02	.68	1N973B		
1N776	.30	.21	1N903A	1.17	.78	USN1N962B		
1N777	.90	.72	1N904	.99	.66	THRU	3.00	2.50
1N781	.92	.75	1N904A	1.14	.76	USN1N973B		
1N782	1.10	.87	1N905	1.14	.76	1N974		
1N805	.29	.20	1N905A	1.55	1.09	THRU	1.40	1.00
1N806 (SG268)	.95	.74	1N906	.90	.60	1N984		
1N807 (SG269)	1.05	.82	1N906A	1.13	.75	1N974A		
1N811 (S4G)	1.15	.83	1N907	.89	.59	THRU	1.50	1.10
1N812 (S5G)	2.20	1.55	1N907A	1.52	1.01	1N984A		
1N813 (S6G)	1.30	.91	1N908	.87	.57	1N974B		
1N814 (S9G)	2.20	1.55	1N908A	1.02	.68	THRU	1.75	1.50
1N815 (S10G)	1.55	1.05	1N911	.95	.76	1N984B		
1N816 (SG22)	.45	.35	1N914	.45	.30	1N993 (S266G)	4.80	3.40
USN1N816W	.45	.35	USN1N914	.45	.30	1N994 (S570G)	1.75	1.25
1N821	3.10	2.35	1N914A	.50	.33	1N995 (S555G)	.60	.45
USN1N821	5.05	3.50	1N914B	1.35	.90	USN1N995M	1.20	.95
1N821A	3.85	3.10	1N916	.67	.44	1N996 (S403G)	1.15	.87
1N822	7.35	5.90	1N916A	.75	.50	1N1028	.90	.60
1N823	3.50	2.90	1N916B	.92	.61	1N1029	1.10	.80
USN1N823	6.20	4.70	1N919 (SG1535)	5.50	4.55	1N1030	1.15	.85
1N823A	5.25	4.50	1N925	2.00	1.50	1N1031	1.20	.90
1N824	9.60	8.00	1N926	3.20	2.40	1N1032	1.25	.94
1N825	5.60	4.50	1N927	4.40	3.30	1N1033	1.35	.95
1N825A	7.90	6.75	1N928	5.20	3.85	1N1046	1.25	.94
USN1N825	9.00	7.70	1N933	1.03	.78	1N1093	.90	.68
1N827	10.70	9.20	1N935	2.00	1.75	1N1095	.76	.51
USN1N827	18.50	15.90	1N935A	2.30	2.00	1N1096	.96	.60
1N827A	14.25	12.25	1N935B	3.10	2.70	1N1100	.53	.35
1N829	23.50	19.00	JAN1N935B	5.70	4.85	1N1101	.63	.42
USN1N829	36.00	27.50	1N936	2.40	2.10	1N1102	.66	.44
1N846	.50	.38	1N936A	3.10	2.70	1N1103	.81	.54
1N847	.62	.47	1N936B	3.70	3.20	1N1104	2.40	1.65
1N848	.70	.52	1N937	4.70	4.10	1N1105	2.75	1.95
1N849	.76	.56	1N937A	5.30	4.50	1N1115	1.05	.70
1N850	1.70	1.25	1N937B	5.95	5.10	1N1116	1.12	.75
1N851	2.35	1.70	JAN1N937B	9.90	8.50	1N1117	1.42	.95
1N852	2.45	1.85	1N938	6.15	5.35	1N1118	1.75	1.17
1N853	2.75	2.00	1N938A	6.65	5.75	1N1119	1.90	1.27
1N854	3.25	2.40	1N938B	9.75	8.50	1N1120	2.40	1.60
1N855	3.90	2.90	JAN1N938B	12.20	10.45	1N1124	1.95	1.30
1N856	4.60	3.40	1N939	16.20	13.50	1N1124A	2.10	1.40
1N857	.46	.35	1N939A	22.30	18.90	1N1125	2.50	1.65
1N858	.58	.44	1N939B	24.85	21.00	1N1125A	2.55	1.70
1N859	.65	.50	1N940	33.70	28.75	1N1126	3.30	2.20
1N860	.72	.55	1N940A	41.75	34.75	1N1126A	3.60	2.40
1N861	1.40	1.10	1N940B	45.25	38.75	1N1127	3.70	2.50
1N862	2.00	1.50	1N941	2.90	2.50	1N1127A	4.00	2.80
1N863	2.15	1.60	1N941A	3.00	2.60	1N1128	4.25	2.90
1N864	2.35	1.75	1N941B	3.50	3.00	1N1128A	4.50	3.00
1N865	2.75	2.10	1N942	3.30	2.80	1N1130	10.50	7.40
1N866	3.25	2.45	1N942A	3.85	3.30	1N1133	7.30	5.50
1N867	3.90	2.90	1N942B	4.35	3.75	1N1134	7.30	5.50
1N868	.42	.32	1N943	7.85	5.90	1N1135	8.60	6.45
1N869	.55	.40	1N943A	8.55	6.50	1N1136	8.60	6.45
1N870	.62	.46	1N943B	9.60	7.25	1N1137	10.60	7.90
1N871	.70	.52	1N944	9.10	7.50	1N1138	10.60	7.90
1N872	1.15	.85	1N944A	10.35	8.50	1N1139	14.20	10.75
1N873	1.60	1.20	1N944B	13.75	11.35			
1N874	1.70	1.27	1N945	21.15	17.80			
1N875	1.85	1.35	1N945A	28.85	24.50			
1N876	2.20	1.65	1N945B	32.45	27.50			

Transitron SEMICONDUCTORS

TYPE	UNIT PRICE		TYPE	UNIT PRICE		TYPE	UNIT PRICE	
	1-99	100-999		1-99	100-999		1-99	100-999
1N1140	14.20	10.75	1N1229	1.46	.97	1N1443	4.43	2.95
1N1141	17.10	12.75	1N1229A	1.55	.97	1N1444	5.40	3.25
1N1142	17.10	12.75	1N1230	1.59	1.05	1N1486	.75	.50
1N1143	20.10	15.65	1N1230A	1.75	1.09	1N1487	.50	.28
1N1143A	20.10	15.65	1N1231	1.94	1.29	1N1488	.53	.30
1N1144	24.70	18.50	1N1231A	2.20	1.36	1N1489	.59	.33
1N1145	24.70	18.50	1N1232	2.20	1.45	1N1490	.68	.42
1N1146	27.60	20.60	1N1232A	2.50	1.65	1N1491	.75	.50
1N1147	41.00	30.50	1N1233	2.65	1.75	1N1492	.95	.59
1N1148	45.80	34.10	1N1233A	2.75	2.05	1N1537	1.50	1.15
1N1149	51.00	38.00	1N1234	3.15	2.05	1N1538	1.70	1.50
1N1169	.60	.40	1N1234A	3.20	2.40	1N1539	2.00	1.55
1N1169A	.65	.43	1N1235	4.15	2.75	1N1540	2.25	1.70
1N1183	1.95	1.30	1N1236	5.10	3.30	1N1541	2.90	2.00
1N1183A	2.15	1.45	1N1251	.45	.29	1N1542	3.80	2.65
1N1184	2.40	1.60	1N1252	.50	.32	1N1543	4.90	3.45
1N1184A	2.45	1.70	1N1253	.53	.34	1N1544	6.30	4.20
1N1185	2.90	1.95	1N1254	.59	.39	1N1551	1.60	1.10
1N1185A	3.00	2.10	1N1255	.68	.43	1N1552	2.00	1.35
-1N1186	3.30	2.00	1N1256	.80	.50	1N1553	2.50	1.70
1N1186A	3.55	2.45	1N1257	.95	.60	1N1554	2.90	2.05
-1N1187	4.00	2.45	1N1258	1.40	.90	1N1555	3.40	2.30
1N1187A	4.95	3.42	1N1259	1.75	1.10	1N1556	.45	.30
-1N1188	4.90	2.95	1N1260	2.75	1.80	1N1557	.50	.33
1N1188A	6.19	4.20	1N1261	3.50	2.30	1N1558	.55	.36
-1N1189	5.25	3.20	1N1341	1.20	.80	1N1559	.60	.40
1N1189A	7.40	5.00	1N1341A	1.30	.90	1N1560	.70	.48
-1N1190	5.80	3.50	1N1341B	2.25	1.45	1N1581 (TM7)	1.10	.70
1N1190A	8.00	5.60	1N1342	1.20	.85	1N1582 (TM17)	1.20	.80
1N1191	1.80	1.20	1N1342A	1.35	.95	1N1583 (TM27)	1.95	1.30
1N1191A	2.45	1.65	1N1342B	1.80	1.20	1N1584 (TM37)	2.50	1.70
1N1192	2.20	1.45	1N1343	1.25	.90	1N1585 (TM47)	3.30	2.25
1N1192A	3.10	2.05	1N1343A	1.50	1.15	1N1586 (TM57)	3.70	2.50
1N1193	2.85	1.90	1N1343B	2.70	1.80	1N1587 (TM67)	4.25	2.90
1N1193A	3.85	2.65	1N1344	2.00	1.35	1N1612	1.07	.72
-1N1194	3.00	1.80	1N1344A	2.30	1.65	1N1613	1.20	.80
1N1194A	3.70	2.50	1N1344B	4.00	2.95	1N1614	1.90	1.25
-1N1195	3.50	2.15	1N1345	2.70	1.85	-1N1615	2.40	1.60
1N1195A	3.85	2.65	1N1345A	3.00	2.15	-1N1616	3.00	2.00
-1N1196	3.80	2.30	1N1345B	4.80	3.60	1N1644	.85	.59
1N1196A	4.95	3.40	-1N1346	3.20	2.25	1N1645	.85	.59
-1N1197	4.00	2.45	1N1346A	3.80	2.75	1N1646	.95	.64
1N1197A	5.90	4.10	1N1346B	6.40	4.80	1N1647	1.04	.69
-1N1198	4.50	3.40	-1N1347	3.65	2.60	1N1648	1.16	.77
1N1198A	7.00	4.85	1N1347A	4.40	3.00	1N1649	1.28	.85
1N1199,A	1.20	.80	1N1347B	8.75	6.35	1N1650	1.28	.85
1N1199B	1.40	1.00	-1N1348	3.80	2.75	1N1651	1.30	1.00
1N1200,A	1.30	.90	1N1348A	5.00	3.50	1N1652	1.38	1.03
1N1200B	1.50	1.10	1N1348B	9.00	7.00	1N1653	1.45	1.06
1N1201,A	1.80	1.20	1N1351			1N1692	.44	.26
1N1201B	2.00	1.40	THRU	6.15	4.60	1N1693	.47	.28
1N1202,A	2.20	1.50	1N1375			1N1694	.55	.35
1N1202B	2.50	1.80	1N1351A			1N1695	.65	.42
1N1203,A	3.00	2.05	THRU	7.30	5.85	1N1696	.71	.47
1N1203B	3.50	2.60	1N1375A			1N1697	.92	.61
-1N1204,A	3.25	2.30	1N1351R			1N1701	.70	.40
1N1204B	4.25	2.90	THRU	6.15	4.60	1N1702	.85	.50
-1N1205,A	3.75	2.70	1N1375R			1N1703	1.00	.60
1N1205B	4.80	3.25	1N1351RA			1N1704	1.20	.75
-1N1206,A	4.00	2.95	THRU	7.30	5.85	1N1705	1.55	1.00
1N1206B	6.00	4.00	1N1375RA			1N1706	2.50	1.70
+1N1217,A	.45	.28	1N1406	1.40	1.00	1N1707	.75	.55
+1N1218,A	.50	.31	1N1407	3.00	2.00	1N1708	.90	.60
+1N1219,A	.52	.33	1N1408	5.00	3.50	1N1709	1.05	.70
+1N1219,A	.55	.35	1N1409	7.00	4.90	1N1710	1.40	.90
1N1221,A	.59	.39	1N1410	8.00	5.60	1N1711	2.15	1.40
1N1222,A	.74	.40	1N1434	3.30	2.20	1N1712	3.20	2.10
1N1223,A	.86	.57	1N1435	3.60	2.40	1N1730	5.85	3.90
1N1224,A	1.02	.68	1N1436	5.00	3.35	1N1731	6.70	4.60
1N1225,A	1.67	1.11	1N1437	6.25	4.05	1N1732	8.05	5.80
1N1226,A	1.83	1.21	1N1438	6.90	4.60	1N1733	12.75	8.50
1N1227	1.25	.78				1N1734	15.00	10.00
1N1227A	1.25	.78				1N1763	.42	.28
1N1228	1.36	.83				1N1764	.60	.36
1N1228A	1.40	.87						

Transitron SEMICONDUCTORS

TYPE	UNIT PRICE		TYPE	UNIT PRICE		TYPE	UNIT PRICE	
	1-99	100-999		1-99	100-999		1-99	100-999
1N1765			1N2032-3			1N2104	.50	.32
THRU	2.75	1.95	THRU	3.00	2.00	1N2105	.53	.34
1N1768			1N2040-3			1N2106	.59	.39
1N1765A			1N2032-4			1N2107	.68	.43
THRU	3.25	2.30	THRU	3.00	2.00	1N2108	.75	.50
1N1768A			1N2040-4			1N2117	1.10	.75
1N1769			1N2041,R	5.00	3.75	1N2128	2.40	1.90
THRU	2.75	1.95	1N2041-1	8.00	6.00	1N2128A	2.50	1.95
1N1781			(5 PCT. TOL.)			1N2129	3.05	2.15
1N1769A			1N2041-2	8.00	6.00	1N2129A	3.20	2.25
THRU	3.25	2.30	(5 PCT. TOL.)			1N2130	3.80	2.90
1N1781A			1N2042,R	5.00	3.75	1N2130A	4.00	3.10
1N1782			(SV905,R)			1N2131	4.50	3.35
THRU	2.75	1.95	1N2042-1			1N2131A	4.75	3.50
1N1789			THRU	7.25	5.10	1N2132	5.20	3.55
1N1782A			1N2049-1			1N2132A	5.40	3.60
THRU	3.25	2.30	(5 PCT. TOL.)			1N2133	5.45	3.65
1N1789A			1N2042-2			1N2133A	5.60	3.75
1N1790			THRU	7.25	5.10	1N2134	5.65	3.80
THRU	2.75	1.95	1N2049-2			1N2134A	5.80	3.85
1N1795			(5 PCT. TOL.)			1N2135	5.85	3.90
1N1790A			1N2042-3			1N2135A	6.00	4.00
THRU	3.25	2.30	THRU	7.25	5.10	USA1N2135A	7.00	4.70
1N1795A			1N2049-3			1N2135RA	6.50	4.35
1N1804			(5 PCT. TOL.)			1N2154	2.39	1.59
THRU	4.90	3.60	1N2042-4			1N2155	3.00	2.00
1N1808			THRU	7.25	5.10	1N2156	4.38	2.92
1N1804A			(5 PCT. TOL.)			1N2157	5.10	3.50
THRU	5.10	3.80	1N2043 (SV906)	5.00	3.75	1N2158	5.60	3.95
1N1808A			1N2043,R	5.00	3.75	1N2159	5.90	4.10
1N1804R			(SV906,R)			1N2160	6.30	4.20
THRU	4.90	3.60	1N2044 (SV908)	5.00	3.75	1N2216	1.10	.70
1N1808R			1N2044,R	5.00	3.75	+1N2217	2.90	2.10
1N1804RA			(SV908,R)			1N2218	2.15	1.30
THRU	5.10	3.30	1N2045 (SV910)	5.00	3.75	+1N2219	3.80	2.65
1N1808RA			1N2045,R	5.00	3.75	1N2220	3.15	2.00
1N1816			(SV910,R)			+1N2221	4.75	3.20
THRU	6.10	4.50	1N2046 (SV912)	5.00	3.75	1N2222	3.55	2.15
1N1836			1N2046,R	5.00	3.75	1N2222A	3.85	2.40
1N1816A			(SV912,R)			+1N2223	5.10	3.40
THRU	7.70	5.75	1N2047 (SV915)	5.00	3.75	+1N2223A	5.25	3.55
1N1836A			1N2047,R	5.00	3.75	1N2224	3.85	2.30
1N1816R			(SV915,R)			1N2224A	4.25	2.60
THRU	6.10	4.50	1N2048 (SV918)	5.00	3.75	+1N2225	5.25	3.55
1N1836R			1N2048,R	5.00	3.75	+1N2225A	5.75	4.00
1N1816RA			(SV918,R)			1N2226	5.65	3.40
THRU	7.70	5.75	1N2049 (SV924)	5.00	3.75	1N2226A	6.15	3.70
1N1836RA			1N2049,R	5.00	3.75	+1N2227	6.60	4.40
1N2021 (TR151)	3.10	2.15	(SV924,R)			+1N2227A	7.25	4.75
1N2022 (TR251)	4.70	3.15	1N2069	.45	.27	1N2228	1.10	.70
1N2023 (TR301)	4.85	3.25	1N2069A	.50	.30	+1N2229	2.90	2.10
1N2024 (TR351)	5.00	3.40	1N2070	.50	.30	1N2230	1.55	.98
1N2025 (TR401)	5.15	3.50	1N2070A	.70	.38	+1N2231	3.00	2.30
1N2026 (TM4)	1.10	.70	1N2071	.70	.38	1N2232	1.95	1.22
1N2027 (TM24)	1.95	1.30	1N2071A	.85	.45	+1N2233	3.20	2.45
1N2028 (TM34)	2.45	1.65	1N2072	.45	.30	1N2234	2.45	1.50
1N2029 (TM44)	3.25	2.20	1N2073	.50	.32	+1N2235	3.70	2.75
1N2030 (TM54)	3.60	2.40	1N2074	.52	.33	1N2236	3.00	1.85
1N2031 (TM64)	4.15	2.80	1N2075	.53	.34	+1N2237	4.25	3.10
1N2032			1N2076	.56	.36	1N2238	3.75	2.30
THRU	2.40	1.60	1N2077	.59	.39	+1N2239	5.00	3.55
1N2040			1N2078	.68	.43	1N2266	1.25	.70
1N2032-1			1N2079	.75	.50	+1N2267	2.50	1.95
THRU	3.00	2.00	1N2080	.45	.29	1N2268	2.15	1.30
1N2040-1			1N2081	.50	.32	+1N2269	3.40	2.55
1N2032-2			1N2082	.53	.34	1N2270	3.15	1.90
THRU	3.00	2.00	1N2083	.59	.39	+1N2271	4.40	3.40
1N2040-2			1N2084	.68	.45	1N2272	1.20	.80
1N2032-3			1N2085	.75	.50	1N2273	1.30	.85
THRU	3.00	2.00	1N2086	.90	.58	1N2274	2.00	1.35
1N2040-3			1N2103	.45	.29	1N2275	2.70	1.85
1N2032-4						1N2276	3.50	2.40
THRU						1N2277	3.90	2.65
1N2040-4						1N2278	4.40	3.00
						1N2279	6.00	4.00

Transitron SEMICONDUCTORS

TYPE	UNIT PRICE		TYPE	UNIT PRICE		TYPE	UNIT PRICE	
	1-99	100-999		1-99	100-999		1-99	100-999
1N2372 (TM106)	7.00	5.60	@1N2804B			1N3016B		
1N2373	1.25	.80	THRU	10.50	7.90	THRU	3.10	2.05
1N2374	2.00	1.40	@1N2838B			1N3044B		
1N2382	13.95	9.30				USN1N3016B		
1N2383	18.90	12.60	@1N2839	6.80	5.10	THRU	3.40	2.25
			THRU			USN1N3032B		
1N2384	25.05	16.70	@1N2846			1N3045B		
1N2385	30.00	20.00				THRU	4.00	2.70
1N2446, R	2.50	1.65	@1N2839A	11.30	8.50	1N3051B		
1N2447, R	3.05	2.00	THRU					
1N2448, R	3.75	2.55	@1N2846A			1N3053	76.50	57.30
						1N3062	3.00	2.25
1N2449, R	4.40	2.95	@1N2839B	17.95	13.50	1N3063	.67	.44
1N2450, R	4.80	3.25	THRU			1N3064	.67	.48
1N2451, R	5.00	3.40	@1N2846B			USN1N3064	.67	.44
1N2452, R	5.20	3.60				1N3065	3.50	2.50
1N2453, R	5.40	3.75	+1N2847	2.60	1.90	1N3066	2.75	1.90
			+1N2848	2.75	2.05	1N3067	.83	.56
1N2454, R	5.60	3.85	+1N2849	3.10	2.15	1N3068	.62	.41
1N2455, R	5.90	3.95	+1N2850	3.50	2.45	1N3069	1.20	.80
1N2456, R	7.50	5.00	+1N2851	3.75	2.60			
1N2457, R	10.00	6.65				1N3070	5.25	3.50
1N2482	.50	.30	+1N2852	4.40	3.00	1N3071	6.50	4.35
			1N2858	.40	.24	1N3072	.50	.30
1N2483	.55	.38	1N2859	.41	.25	1N3073	.52	.32
1N2484	.60	.48	1N2860	.43	.26	1N3074	.55	.34
1N2485	.55	.45	1N2861	.56	.33			
1N2486	.60	.51				1N3075	.58	.35
1N2487	.65	.53	1N2862	.66	.43	1N3076	.61	.36
			1N2863	.73	.47	1N3077	.65	.38
1N2488	.67	.56	1N2864	1.00	.70	1N3078	.67	.39
1N2489	.75	.60				1N3079	.70	.40
1N2491 (TM8)	1.25	.80	1N2970	5.10	3.85			
1N2492 (TM18)	1.30	.85	THRU			1N3080	.90	.60
1N2493 (TM28)	2.00	1.35	1N2988			1N3081	1.10	.70
						-1N3082	.90	.65
1N2494 (TM38)	2.70	1.85	1N2970A	5.20	3.90	-1N3083	1.80	1.30
1N2495 (TM48)	3.50	2.40	THRU			-1N3084	3.00	2.00
1N2496 (TM58)	3.90	2.60	1N2988A					
1N2497 (TM68)	4.40	3.00				1N3110	1.10	.85
1N2498	5.80	4.30	1N2970B	6.90	5.25	1N3146	1.75	1.25
			THRU			1N3154	2.85	2.20
1N2498A	7.70	6.25	1N2988B			USN1N3154	4.20	3.50
1N2499	5.80	4.30				1N3154A	3.60	2.70
1N2499A	7.70	6.25	1N2970R	5.10	3.85			
1N2500	5.80	4.30	THRU			1N3155	3.60	2.70
1N2500A	7.70	6.25	1N2988R			USN1N3155	5.30	4.40
						1N3155A	4.25	3.20
1N2501 (SL608)	1.60	1.00	1N2970RA	5.20	3.90	1N3156	6.30	4.75
1N2502 (SL610)	3.00	2.00	THRU			USN1N3156	10.30	7.75
1N2503 (SL612)	6.00	4.10	1N2988RA					
1N2504 (SL615)	8.00	5.70				1N3156A	7.25	5.45
1N2505 (SL708)	1.80	1.15	1N2970RB	6.90	5.25	1N3157	7.70	5.80
			THRU			USN1N3157	13.05	9.80
1N2506 (SL710)	3.50	2.35	1N2988RB			1N3157A	11.30	8.50
1N2507 (SL712)	7.00	4.90				1N3189	3.00	2.10
1N2508 (SL715)	9.00	6.00	1N2989	5.10	3.85			
1N2793	2.75	2.00	THRU			1N3190	4.50	3.00
1N2609	.50	.33	1N3015			1N3191	7.00	4.90
						1N3193	.38	.25
1N2610	.53	.35	1N2989A	5.20	3.90	1N3194	.41	.28
1N2611	.60	.40	THRU			1N3195	.66	.44
1N2612	.70	.43	1N3015A					
1N2613	.80	.50				1N3196	.91	.61
1N2614	.95	.60	1N2989B	6.90	5.25	@1N3208	2.40	1.40
			THRU			@1N3209	2.60	1.60
1N2615	1.10	.70	1N3015B			1N3210,R	2.90	2.00
-1N2616	1.40	.95				1N3211,R	3.20	2.15
-1N2617	2.00	1.20	1N2989R	5.10	3.85			
1N2793	2.75	2.00	THRU			1N3212,R	3.60	2.50
1N2794	3.05	2.05	1N3015R			1N3213,R	4.50	3.35
						1N3214,R	5.75	3.85
1N2795	3.15	2.10	1N2989RA	5.20	3.90	+1N3253	.50	.35
1N2796	3.80	2.60	THRU			+1N3254	.55	.40
1N2797	4.00	2.90	1N3015RA					
1N2798	4.30	3.10				+1N3255	.70	.48
1N2799	4.70	3.35	1N2989RB	6.90	5.25	1N3256	.94	.63
			THRU			1N3257	2.55	1.80
1N2800	4.85	3.50	1N3015RB			1N3258	2.55	1.80
						1N3287	.60	.42
@1N2804			1N3016	2.40	1.60			
THRU	5.60	4.20	1N3051			USN1N3287H	.90	.68
@1N2838								
			1N3016A	2.65	1.80	@1N3305		
@1N2804A			THRU			THRU	5.60	4.20
THRU	7.50	5.50	1N3051A			@1N3339		
@1N2838A								

Tranqitron SEMICONDUCTORS

TYPE	UNIT PRICE		TYPE	UNIT PRICE		TYPE	UNIT PRICE	
	1-99	100-999		1-99	100-999		1-99	100-999
1N3305A			1N3909	49.50	37.00	2N343A	21.75	14.45
THRU	7.50	5.50	1N3910	64.50	48.25	2N343B	22.40	14.90
1N3339A						2N389	15.00	10.00
1N3305B			1N3911	79.50	59.50	2N389A	15.50	10.60
THRU	10.50	7.90	1N3912	89.50	67.00	2N424	16.50	11.00
1N3339B			1N3913	99.50	74.50	2N424A	16.50	11.00
1N3340			1N4009	.42	.28			
THRU	6.80	5.10	1N4089	1.00	.70	2N470 (ST10)	3.40	2.25
1N3350						2N471 (ST30)	5.50	3.70
1N3340A			1N4099			2N471A	5.80	3.90
THRU	11.30	8.50	1N4135			2N472 (ST40)	7.30	4.85
1N3350A						2N472A	7.60	5.05
1N3341B			1N4308 (SG5000)	2.75	2.10	2N473 (ST11)	3.40	2.45
THRU	17.95	13.50	1N4309 (SG5100)	2.25	1.60	2N474 (ST31)	6.30	4.20
1N3351B			1N4310 (SG5200)	2.50	1.85	2N474A	6.55	4.40
			1N4311 (SG5300)	3.00	2.30	2N475 (ST41)	7.80	5.20
			1N4312 (SG5400)	3.25	1.95	2N475A	3.10	5.40
1N3466	.67	.48	1N4362	2.45	1.96	2N476 (ST13)	8.65	5.90
1N3467	1.60	1.25	1N4719	.55	.37	2N477 (ST33)	9.60	6.40
1N3468	1.20	.92	1N4720	.60	.40	2N478 (ST12)	3.60	2.46
1N3469	2.00	1.50	1N4721	.67	.45	2N479 (ST32)	6.95	4.60
1N3470	1.85	1.40	1N4722	.97	.65	2N479A	7.15	4.80
1N3496	3.75	2.50	1N4723	1.33	.89	2N480 (ST42)	9.30	6.20
1N3497	5.75	4.50	1N4724	4.00	2.65	2N480A	9.60	6.60
1N3498	9.00	7.00	1N4725	6.00	4.00	2N497	2.40	1.60
1N3499	19.00	15.50	1N4890	50.00	40.00	JAN2N497	3.00	2.00
1N3500	3.00	2.05	1N4890A	54.00	42.00	2N497A	3.15	2.10
1N3501	30.00	24.00	1N4891	56.00	43.00	2N498	2.85	1.90
1N3502	35.00	28.00	1N4891A	60.00	46.00	JAN2N498	3.60	2.40
1N3503	48.00	36.00	1N4892	65.00	50.00	2N498A	3.75	2.50
1N3503A	50.00	40.00	1N4892A	70.00	54.00	2N541 (ST14)	6.00	4.00
1N3504	60.00	48.00	1N4893	75.00	58.00	2N542 (ST34)	6.20	4.10
1N3504A	70.00	56.00	1N4893A	80.00	63.00	2N542A	9.85	6.55
1N3550	.69	.53	1N4894	85.00	67.00	2N543 (ST44)	7.95	5.30
1N3566	12.50	9.00	1N4894A	90.00	72.00	2N543A	12.65	8.45
1N3600	3.65	2.50	1N4895	95.00	76.00	2N545	19.40	13.25
USN1N3600	3.65	2.50	1N4895A	100.00	80.00	USN2N545	26.50	7.65
1N3604	.80	.55	2N117	8.15	5.45	2N546	11.75	7.85
1N3605	.72	.48	2N118	8.15	5.45	2N547	13.50	9.30
1N3606	1.00	.67	2N118A	8.15	5.45	2N547/A		
1N3639	.60	.40	2N119	11.05	7.35	2N548	9.30	6.10
1N3640	.75	.50	2N120	12.60	8.40	2N549	7.35	4.90
1N3641	1.08	.72	2N243	13.75	9.15	2N550	4.40	2.95
1N3642	1.49	.99	2N244	16.50	11.00	2N551	7.35	4.90
1N3666	.70	.52	2N263	17.85	11.90	2N552	3.65	2.45
USN1N3666M	.75	.58	2N264	11.50	7.65	2N656	2.70	1.80
USN1N3666M-1	.80	.64	2N332	4.65	3.10	JAN2N656	3.30	2.20
USN1N3666M-2	.88	.71	2N332A	4.90	3.20	2N656A	3.45	2.30
1N3668	3.10	2.52	2N333	4.65	3.10	2N657	4.35	2.90
1N3731	2.20	1.30	2N333A	4.90	3.20	JAN2N657	5.40	3.60
1N3874	11.25	8.50	2N334	4.65	3.10	2N657A	5.70	3.80
1N3875	16.50	10.75	2N334A	4.90	3.20	2N681	8.50	5.65
1N3876	18.00	13.50	2N335	4.90	3.30	2N682	9.35	6.20
1N3877	20.00	15.00	1N335A	5.20	3.53	2N682		
1N3878	22.50	17.60	JAN2N335	5.25	3.30	2N683	10.15	6.75
1N3879	11.25	7.50	2N336	4.90	3.30	2N684	12.65	8.40
1N3880	14.50	9.55	2N336A	6.25	4.20	2N685	14.20	9.45
1N3881	18.00	12.00	2N337	4.85	3.20	2N686	17.95	11.95
1N3882	21.00	13.85	2N337A	5.15	3.40	2N687	20.95	13.95
1N3883	25.50	17.00	JAN2N337	5.15	3.40	2N687	20.95	13.95
1N3884	15.50	11.25	2N338	5.50	3.65	2N688	25.45	16.95
1N3885	20.50	13.25	2N338A	5.80	3.85	2N689	31.85	21.20
1N3886	23.00	15.75	JAN2N338	5.80	3.85	2N696	1.50	1.00
1N3887	25.00	17.75	2N339	10.15	6.75	2N697	1.50	1.00
1N3888	27.00	19.00	2N339A	11.25	7.50	2N698	1.57	1.05
1N3889	15.50	10.25	2N340	10.80	7.20	2N699	1.57	1.05
1N3890	18.50	12.20	2N340A	12.00	8.00	2N706	.97	.65
1N3891	22.00	14.50	2N341	17.50	11.65	2N706A	1.18	.79
1N3892	25.00	16.50	JAN2N341	17.50	11.65	2N706B	1.49	.99
1N3893	27.00	18.00	2N341A	19.50	13.00	2N708	1.30	.85
1N3899	20.00	13.20	2N342	11.85	7.90	2N708/46	1.84	1.22
1N3900	27.00	17.80	JAN2N342	14.55	9.65	2N708/51	4.20	2.80
1N3901	35.00	23.05	2N342A	11.90	7.95	2N708/52	1.58	1.06
1N3902	39.00	25.75	2N342B	16.75	11.20	2N708/TNT	3.45	2.30
1N3903	49.75	37.00	2N343	18.40	12.25	2N708/TPT	3.45	2.30
			JAN2N343	19.40	13.25	2N709	1.65	1.10
						2N709/46	2.52	1.68

Trançitron SEMICONDUCTORS

TYPE	UNIT PRICE		TYPE	UNIT PRICE		TYPE	UNIT PRICE	
	1-99	100-999		1-99	100-999		1-99	100-999
2N709/51	3.95	2.60	2N896	17.45	11.70	2N1211	27.00	18.00
2N709/52	2.10	1.40	2N898	21.45	14.20	2N1212	15.00	10.00
2N709/TMT	3.15	2.10	2N900	41.95	27.90	2N1235	60.00	40.00
2N709/TPT	3.15	2.10				2N1247 (ST1026)	13.25	8.75
2N709A	2.30	1.55	-2N910	2.10	1.60	2N1248 (ST1050)	13.25	8.75
			2N911	5.50	3.60			
2N717	1.58	1.05	2N914	1.57	1.05	2N1249	4.50	3.00
2N718	2.05	1.33	2N917	4.95	3.30	2N1250	43.50	29.00
2N718A	2.15	1.43	2N918	5.25	3.50	2N1254	7.80	5.85
2N719	2.35	1.56			2N1255	10.25	7.70	
2N720	1.83	1.22	2N918/46	6.60	4.40	2N1256	12.65	9.50
			2N918/51	9.45	6.30			
2N720A	2.48	1.65	2N918/52	6.30	4.20	2N1257	12.65	9.50
2N721	4.50	3.00	2N918/TNT	7.50	5.00	2N1258	13.00	9.75
2N722	6.00	4.00	2N918/TPT	7.50	5.00	2N1259	12.85	9.65
2N722A	14.70	9.80			2N1276	2.33	1.56	
2N726	3.00	2.00	2N929	3.30	2.20	2N1277	2.17	1.44
			JAN2N929	3.87	2.65			
2N727	3.15	2.10	2N929A	4.50	3.00	2N1278	2.33	1.56
2N728	15.00	10.00	2N930	4.00	2.67	2N1279	2.67	1.78
2N729	18.00	12.00	2N930/46	4.80	3.20	2N1417 (ST9)	1.45	.95
2N730	1.58	1.05			2N1418 (ST29)	1.70	1.13	
2N731	2.06	1.38	2N930/51	7.50	5.00	2N1420	1.67	1.11
			2N930/TNT	6.00	4.00			
2N734	3.95	1.95	2N930/TPT	6.00	4.00	2N1445	4.40	2.95
2N735	2.50	1.65	2N930A	5.40	3.60	2N1479	2.64	1.76
2N736	2.50	1.65	JAN2N930	6.15	4.10	2N1480	2.97	1.98
2N738	4.15	2.15			2N1481	3.30	2.20	
2N739	2.70	1.80	2N948 (TSW31S)	8.45	5.90	2N1482	4.13	2.75
			2N949 (TSW61S)	11.00	7.70			
2N740	2.70	1.80	2N950	16.20	11.35	2N1564	3.95	2.65
2N743	3.30	2.20	(TSW101S)			2N1565	3.75	2.45
2N744	2.70	1.80	2N951	27.00	18.90	2N1566	3.75	2.45
2N753	1.97	1.31	(TSW201S)			2N1572	4.15	2.85
2N754	8.50	5.60			2N1573	3.95	2.65	
			2N956	2.17	1.44			
2N755	11.25	7.40	2N957	5.20	3.60	2N1574	3.95	2.65
2N756	6.15	4.10	2N978	3.15	2.10	2N1586	4.65	3.10
2N757	7.25	4.75	2N995	5.25	3.50	2N1587	4.50	3.00
2N758	7.10	4.75	2N996	4.50	2.70	2N1588	6.15	4.10
2N758A	11.60	7.60			2N1589	4.90	3.25	
			2N1047	14.30	9.55			
2N759	2.40	1.60	2N1047A	14.30	9.55	2N1590	5.25	3.50
2N759A	2.55	1.70	2N1047B	26.00	17.30	2N1591	6.30	4.20
2N760	2.40	1.60	2N1048	18.10	12.05	2N1592	7.75	5.15
2N760A	2.55	1.70	2N1048A	18.10	12.05	2N1593	9.05	6.05
2N764	4.50	3.15			2N1594	10.30	6.85	
			2N1048B	38.30	25.50			
2N765	4.90	3.45	2N1049	16.75	11.15	2N1595	3.00	2.00
2N766	5.20	3.85	2N1049A	16.75	11.15	2N1596	4.90	3.25
2N767	7.00	5.20	2N1049B	33.80	22.50	2N1597	9.40	6.25
2N834	2.00	1.35	2N1050	22.10	14.20	2N1598	14.40	9.60
2N835	1.50	1.00			2N1599	19.30	12.85	
			2N1050A	22.10	14.20			
2N839	3.35	2.20	2N1050B	46.90	31.20	2N1600	5.70	3.80
2N840	3.60	2.45	2N1052	18.35	12.25	2N1601	6.00	4.40
2N841	4.40	2.95	2N1053	13.95	9.30	2N1602	10.50	7.00
2N842	3.95	2.65	2N1054	11.70	7.80	2N1603	15.00	10.00
2N843	4.65	3.10			2N1604	20.00	13.60	
			2N1055	14.55	9.70			
2N844	9.60	6.40	2N1079	17.50	11.00	2N1613	1.73	1.16
2N845	12.20	8.10	2N1080	19.50	13.00	2N1615	6.50	4.40
2N869	5.85	3.90	2N1084	17.25	11.50	2N1616	26.00	17.50
2N869A	9.00	6.00	2N1116	22.00	15.00	2N1616A	38.85	25.90
2N870	5.25	3.50			2N1617	30.00	20.00	
			2N1117	12.00	8.00			
2N871	5.33	3.56	2N1131	5.10	3.40	2N1617A	44.70	29.80
-2N876	3.40	2.25	2N1131A	10.50	7.00	2N1618	35.00	23.50
-2N877	4.25	2.85	JAN2N1131	6.00	4.00	2N1618A	52.13	34.75
-2N878	6.15	4.10	2N1132	5.60	3.75	2N1620	40.00	26.00
-2N879	9.75	7.25			2N1647	17.00	12.70	
			2N1132A	12.00	8.00			
-2N880	13.85	8.90	2N1132B	16.70	11.15	2N1648	21.00	14.30
-2N881	14.85	9.90	2N1139	12.00	8.00	2N1649	20.00	13.70
-2N884	6.40	4.25	JAN2N1132	6.00	4.00	2N1650	25.00	17.00
-2N885	8.80	5.85	2N1149	8.65	5.75	2N1674	5.30	3.65
-2N886	9.70	7.05			2N1686	4.90	3.40	
			2N1150	8.65	5.75			
-2N887	11.75	8.85	2N1151	8.65	5.75	2N1687	5.20	3.75
-2N888	15.00	9.95	2N1154	12.60	8.40	2N1688	5.55	4.05
-2N889	16.15	10.75	2N1155	13.10	8.75	2N1689	7.15	5.40
2N887	11.85	8.90	2N1156	17.50	11.70	2N1690	40.80	27.00
2N888	16.95	12.75			2N1691	40.80	27.00	
			2N1206	11.25	7.50			
2N888/A	28.80	20.15	2N1207	19.00	13.00	2N1700	1.90	1.31
2N889	20.00	15.00	2N1208	19.50	13.00	2N1711	1.89	1.26
2N889/A	35.20	24.65	2N1209	18.50	12.25	2N1714	6.00	4.00
2N892	9.00	6.05	2N1210	24.00	16.00	2N1715	8.25	5.50
2N894	12.70	8.45			2N1716	7.50	5.00	

Transitron SEMICONDUCTORS

TYPE	UNIT PRICE		TYPE	UNIT PRICE		TYPE	UNIT PRICE	
	1-99	100-999		1-99	100-999		1-99	100-999
2N1717	11.25	7.50	2N1974	6.70	5.00	2N2369/TPT	4.80	3.20
2N1718	6.75	4.50	2N1975	5.30	4.00	2N2369A	3.45	2.30
@2N1719	9.00	6.00	2N1983	2.50	1.67	@2N2411	3.15	2.10
2N1720	8.00	5.00	2N1984	2.33	1.56	@2N2412	6.00	4.00
2N1721	12.00	8.00	2N1985	3.15	2.45	2N2427	10.50	7.00
2N1722	43.50	29.00	2N1986	3.75	2.50	@2N2432	12.00	8.00
2N1722A	60.00	40.00	2N1987	4.00	3.05	2N2453	24.00	16.00
2N1723	48.00	36.00	2N1988	6.50	5.00	2N2453A	32.50	21.60
2N1724	43.50	29.00	2N1989	4.25	3.25	2N2475	3.15	2.10
2N1724A	63.00	42.00	2N1990	3.60	2.40	2N2483	3.60	2.40
2N1725	43.50	29.00	2N1991	3.15	2.10	2N2484	3.87	2.65
2N1768	8.25	5.70	2N2009(TCR251)	3.75	2.50	2N2501	4.70	3.15
2N1769	10.73	7.40	2N2010 (TCR501)	4.15	2.75	2N2509	5.00	3.35
-2N1770	4.20	2.75	2N2011(TCR1001)	6.60	4.40	2N2510	6.00	4.00
2N1770A	6.10	4.05	2N2012(TCR2001)	12.50	8.25	2N2511	8.00	5.35
-2N1771	4.60	3.05	2N2013(TCR3001)	24.00	16.00	@2N2586	9.00	6.00
2N1771A	6.95	4.00	2N2014(TCR4001)	34.15	22.75	2N2594	4.13	2.75
-2N1772	5.75	3.80	2N2017	5.85	3.90	@2N2598	15.20	10.10
2N1772A	8.55	5.70	2N2018	30.00	22.50	@2N2599	8.25	5.50
-2N1773	6.95	4.60	2N2019	37.50	28.00	@2N2600	10.65	7.10
2N1773A	11.05	7.35	2N2020	36.00	26.50	@2N2601	6.98	4.65
-2N1774	8.15	5.40	2N2021	55.00	36.00	@2N2602	9.75	6.50
2N1774A	12.90	8.50	2N2032	18.50	12.25	@2N2603	8.70	5.80
-2N1775	9.30	6.20	2N2038	1.74	1.16	2N2604	5.90	3.95
2N1775A	15.70	10.45	2N2039	2.98	1.98	2N2605	6.60	4.40
-2N1776	10.55	7.00	2N2040	2.04	1.36	2N2610	4.80	3.20
2N1776A	18.35	12.20	2N2041	3.24	2.16	2N2639	22.00	14.70
-2N1777	12.35	8.25	2N2102	3.30	2.70	2N2640	16.50	11.00
2N1777A	22.50	15.00	2N2106	2.75	2.17	2N2641	9.00	5.00
2N1842	6.75	4.50	2N2107	3.15	2.58	2N2642	25.50	17.00
2N1843	7.50	5.00	2N2108	3.25	2.71	2N2643	18.00	12.00
2N1844	8.25	5.50	2N2150	22.50	15.00	2N2644	10.50	7.00
2N1845	10.10	6.75	2N2151	24.75	16.50	-2N2679	12.60	8.75
2N1846	12.00	8.00	2N2201	14.05	9.35	-2N2679/A	14.00	9.75
2N1847	14.25	9.50	2N2217	3.35	2.25	-2N2680	16.90	11.80
2N1848	16.85	11.25	2N2218	3.35	2.25	-2N2680/A	18.50	12.80
2N1849	21.30	14.20	2N2218A	5.80	3.85	-2N2681	25.20	17.75
2N1850	24.35	16.25	@JAN2N2218	5.85	3.90	-2N2681/A	27.75	19.40
2N1869	5.10	3.40	2N2219	3.95	2.65	-2N2682	40.25	28.60
2N1870	11.10	7.40	2N2219A	6.70	4.45	-2N2682/A	44.50	31.00
2N1870A	12.00	8.00	@JAN2N2219	6.75	4.50	2N2683	8.45	5.90
USN2N1870A	14.00	9.00	2N2220	3.35	2.25	2N2683/A	9.30	6.50
2N1871	12.50	8.40	2N2221	3.35	2.25	2N2684	11.25	7.90
2N1871A	13.50	9.00	2N1221A	5.80	3.85	2N2684/A	12.40	8.70
USN2N1871A	15.50	10.00	@JAN2N2221	5.85	3.90	2N2685	16.90	11.85
2N1872	15.00	10.30	2N2222	3.95	2.65	2N2685/A	18.55	13.00
2N1872A	16.50	11.00	2N2222A	6.70	4.44	-2N2686	22.50	15.00
USN2N1872A	18.50	12.00	@JAN2N2222	6.75	4.50	-2N2686/A	24.90	16.60
2N1873	18.00	12.00	2N2243	4.80	3.20	-2N2687	4.25	2.85
2N1874	20.50	13.50	2N2243A	5.10	3.40	-2N2688	6.15	4.10
2N1874A	22.50	15.00	2N2270	1.49	.99	-2N2689	11.15	7.80
USN2N1874A	24.50	16.50	2N2297	5.25	3.50	-2N2690	15.00	9.90
2N1875	12.80	8.55	2N2303	6.60	4.40	2N2695	11.10	7.40
2N1875A	14.10	9.40	-2N2322	2.95	2.00	2N2696	6.75	4.50
2N1876	12.95	8.90	2N2322A	3.55	2.35	@2N2726	13.95	9.30
2N1876A	14.80	9.80	-2N2323	3.25	2.20	@2N2727	11.70	7.80
2N1877	26.90	19.20	2N2323A	4.00	2.60	2N2784	5.40	3.60
2N1877A	27.20	20.15	-2N2324	5.35	3.55	2N2784/46	6.75	4.50
2N1878	29.90	22.15	2N2324A	6.55	4.35	2N2784/51	9.75	6.50
2N1878A	30.80	22.85	2N2325	7.95	5.25	2N2784/52	6.45	4.30
2N1879	36.20	24.15	2N2325A	9.55	6.35	2N2784/TNT	7.80	5.20
2N1879A	37.00	24.65	2N2326	10.20	6.85	2N2784/TPT	7.80	5.20
2N1880	38.80	27.45	2N2326A	12.45	8.20	@2N2861	8.50	5.65
2N1880A	39.30	27.75	2N2327	12.95	8.65	@2N2862	6.00	4.00
2N1881	3.75	2.50	2N2327A	15.70	10.45	2N2866	23.50	16.25
2N1882	4.15	2.75	-2N2328	15.90	10.65	@2N2866/66	10.50	7.00
2N1883	6.60	4.40	2N2328A	19.30	12.85	2N2867	26.50	18.25
2N1884	9.50	6.35	-2N2329	21.10	14.15	2N2875	29.70	19.80
2N1885	12.40	8.25	@2N2349	2.32	1.54	@2N2875/66	10.50	7.00
2N1886	11.50	7.65	2N2368	2.64	1.76	2N2885	8.50	5.90
2N1889	5.25	3.50	2N2369	2.40	1.60	@2N2894	1.95	1.30
2N1890	5.32	3.55	2N2369/46	2.88	1.92	2N2903	15.00	10.00
2N1893	2.10	1.60	2N2369/51	6.00	4.00	2N2903A	24.00	16.00
2N1972	7.85	5.20	2N2369/52	2.64	1.76	2N2904	6.75	4.50
2N1973	8.00	6.00	2N2369/TNT	4.80	3.20	2N2904A	9.45	6.30

Transitron SEMICONDUCTORS

TYPE	UNIT PRICE		TYPE	UNIT PRICE		TYPE	UNIT PRICE	
	1-99	100-999		1-99	100-999		1-99	100-999
2N2905	8.10	5.40	2N3665	3.00	2.00	EVR4A		
2N2905A	10.80	7.20	2N3666	3.90	2.60	THRU	.80	.56
2N2906	6.50	4.30	2N3680	33.00	22.00	EVR110A		
2N2906A	9.00	6.00	2N3862	4.90	3.25	EVR4B		
2N2907	7.80	5.10	2N3907	27.00	18.00	THRU	1.25	.85
2N2907A	10.40	7.00	2N3908	39.00	26.00	EVR110B		
2N2910	12.00	8.00	2N3945	1.25	.88	@GBS206DX	5.00	3.40
2N2913	9.90	6.60	@2N4144	.90	.60	@GBS210DX	7.50	5.00
2N2914	12.00	8.00	@2N4145	1.00	.67	-GBS216	15.50	11.25
2N2915	22.50	15.00	@2N4146	1.15	.77	-GBS216B	9.50	6.75
2N2916	25.50	17.00	@2N4147	1.30	.87	@GBS266E	4.00	2.60
2N2917	19.50	13.00	@2N4148	1.40	.94	@GBS406DX	6.75	4.50
2N2918	22.50	15.00	2N4149	1.50	1.00	@GBS410DX	10.00	6.65
2N2919	24.00	16.00	@2N4210	69.00	46.00	-GBS416	19.75	13.75
2N2920	27.00	18.00	@2N4211	89.00	59.00	-GBS416B	14.50	10.50
2N2958	2.25	1.50	@2N4269	1.60	1.05	@GBS466E	5.50	3.60
2N2959	2.70	1.80	@2N4270	1.80	1.20	**ND100	47.50	43.50
2N3001	15.00	10.00	@2N4271	2.95	1.95	**ND101	69.50	65.00
2N3002	19.80	13.20	@2N4272	3.95	2.65	**ND200	49.50	45.50
2N3003	29.32	19.55	@2N4273	3.95	2.65	**ND201	71.50	67.00
2N3004	42.60	28.40	3N39 (SV3290)	14.50	11.60	02	7.50	5.00
-2N3005	10.35	6.90	3N40 (SV3291)	17.15	13.30	Q49	4.00	3.30
-2N3006	13.05	8.70	3N41 (SV3292)	19.60	15.10	Q50	5.80	4.00
-2N3007	17.65	11.75	3N42 (SV3300)	17.50	13.40	Q51	6.50	4.50
-2N3008	28.25	18.80	3N43 (SV3301)	21.10	16.20	Q52	4.00	3.00
2N3010	1.80	1.20	3N44 (SV3302)	27.90	21.50	Q53	5.50	3.90
@2N3011	1.98	1.32	3N44A	36.00	27.65	Q54	8.00	5.60
@2N3012	1.95	1.30	3N62	7.70	5.15	Q55	6.00	4.50
2N3019	4.80	3.20	3N63	10.80	7.25	Q56	9.00	6.30
2N3020	4.50	3.00	3N64	13.70	9.20	Q57	7.00	5.00
+2N3053	1.50	1.00	3N65	12.70	8.50	Q58	5.00	3.75
-2N3054	2.95	1.95	3N66	15.40	10.30	Q59	6.00	4.50
2N3057	8.40	5.60	3N67	18.50	12.40	Q60	7.50	5.25
2N3072	9.00	6.00	3N68	14.40	9.65	Q61	9.00	6.30
2N3073	9.00	6.00	3N69	17.30	11.60	S62 (1N145)	.70	.52
2N3077	9.60	6.40	3N70	20.40	13.70	S46 (1N811)	1.15	.83
2N3078	6.60	4.40	3N74	14.70	9.80	S66 (1N812)	2.20	1.55
2N3108	5.25	3.50	3N75	12.75	8.50	S66 (1N813)	1.30	.91
2N3110	4.75	3.15	3N76	9.30	6.20	S86	.95	.70
2N3114	1.95	1.30	3N77	8.55	5.70	S96 (1N814)	2.20	1.55
2N3115	2.40	1.60	3N78	6.30	4.20	S106 (1N815)	1.55	1.05
2N3117	18.00	12.00	3N79	4.20	2.80	S266G (1N993)	4.80	3.40
2N3120	9.90	6.60	@3N87	13.50	9.00	S320G	.60	.42
2N3121	9.90	6.60	@3N88	10.50	7.00	S403G (1N996)	1.15	.87
2N3133	4.30	3.00	3N120	18.00	12.00	S555G (1N995)	.60	.45
2N3134	5.15	3.35	3N121	18.00	12.00	S970G (1N994)	1.75	1.25
2N3135	4.30	3.00	@3N127	18.00	12.00	SC1	2.65	1.95
2N3136	5.15	3.35	ER1	.40	.24	SC2	2.65	1.95
@2N3209	12.00	8.00	@ER2	.30	.20	SC3	2.65	1.95
2N3228	1.50	1.10	ER11	.45	.25	SC5	2.65	1.95
@2N3248	3.90	2.60	@ER12	.32	.22	SC7	2.65	1.95
@2N3249	4.65	3.10	ER21	.49	.26	SC11	2.65	1.95
@2N3250	3.90	2.60	@ER22	.34	.24	SC15	2.65	1.95
@2N3250A	4.50	3.00	ER31	.54	.28	SC47	7.50	5.00
@2N3251	4.65	3.10	ER41	.60	.30	SC68	7.50	5.00
@2N3251A	5.25	3.50	@ER42	.38	.27	SC82	7.50	5.00
@2N3423	24.00	16.00	ER51	.63	.35	SC100	7.50	5.00
@2N3424	36.00	24.00	ER61	.66	.38	SC120	7.50	5.00
2N3502	7.80	5.10	@ER62	.42	.30	SC150	7.50	5.00
2N3503	10.40	7.00	ER81	.80	.45	SC180	7.50	5.00
2N3504	7.80	5.10	ER181	.35	.28	SC200	7.50	5.00
2N3505	10.40	7.00	ER182	.38	.27	SCH51	20.00	14.90
@2N3525	2.90	1.85	ER183	.44	.32	SCH51/A	23.00	17.75
@2N3579	5.25	3.50	ER184	.52	.34	SCH52	20.00	14.90
@2N3580	6.75	4.50	ER185	.65	.36	SCH52/A	25.00	18.75
@2N3581	3.60	2.40	ER186	1.15	.70	SE19	13.80	10.60
@2N3582	4.20	2.80	ER187	3.00	1.50	SE21	15.50	11.90
-2N3633	7.95	5.30	ER308	.95	.65	SE866A	23.10	17.75
2N3633/46	16.50	11.00	ER310	1.06	.75	SE1730	6.25	4.65
2N3633/51	27.50	18.15	ER312	1.27	1.05	SE1731	6.70	5.15
2N3633/52	13.20	8.70	ER900	1.75	1.20	SE1732	8.05	6.20
2N3633/TNT	22.00	14.50	EVR1	.35	.24			
2N3633/TPT	22.00	14.50	EVR1A	.45	.28			
2N3660	5.95	3.95	EVR1B	.90	.49			
2N3661	7.95	5.25	EVR4					
			THRU	.75	.50			
			EVR110					

Tranqitron SEMICONDUCTORS

TYPE	UNIT PRICE		TYPE	UNIT PRICE		TYPE	UNIT PRICE	
	1-99	100-999		1-99	100-999		1-99	100-999
SE1733	13.50	10.60	ST6593	2.00	1.35	SV3140A	3.30	2.05
SE1734	16.00	12.25	ST6594	2.00	1.35	SV3141	2.80	1.70
SE2382	14.60	11.20	ST6600	1.60	1.10	SV3141A	3.30	2.05
SE2383	19.90	15.30	ST6601	1.95	1.30	SV3142	4.10	2.55
SE2384	26.00	20.00	ST7400	109.00	72.00	SV3142A	4.70	3.05
SE2385	31.75	24.50	ST7722	13.20	8.75	SV3143	4.10	2.55
SE5U4GB	10.80	8.30	ST7732	18.50	12.50	SV3143A	4.70	3.05
SE6X4	10.00	7.75	ST8065	6.75	4.50	SV3144	5.40	3.40
SG22 (1N816)	.45	.35	ST8181	2.00	1.35	SV3144A	6.25	4.10
SG211	2.30	1.80	ST8182	2.00	1.35	SV3145	5.40	3.40
SG212	2.85	2.20	ST8183	2.45	1.65	SV3145A	6.25	4.10
SG213	3.10	2.40	ST8184	2.45	1.65	SV3170	4.50	3.60
SG215	1.65	1.25	ST8190	6.60	4.40	SV3171	5.00	3.90
SG216	1.90	1.40	ST8191	8.95	5.95	SV3173	6.50	5.20
SG217	2.30	1.70	ST8229	1.60	1.10	SV3174	7.70	6.15
SG218	2.80	2.00	ST8230	1.95	1.30	SV3175	8.90	7.10
SG221	2.30	1.80	ST8500	4.95	3.30	SV3176	18.80	14.50
SG222	2.85	2.20	ST8509	25.50	17.25	SV3206	14.90	11.50
SG223	3.10	2.40	ST8700	2.10	1.35	SV3207	21.60	16.60
SG225	2.00	1.55	ST8704	4.80	3.20	SV3290 (3N39)	14.50	11.60
SG226	2.30	1.80	ST8705	5.40	3.60	SV3291 (3N40)	17.15	13.30
SG227	2.85	2.20	ST9001	24.00	16.25	SV3292 (3N41)	19.60	15.10
SG228	3.10	2.30	SW30	2.20	1.55	SV3300 (3N42)	17.50	13.40
SG268 (1N806)	.95	.74	SV5 (1N761)	1.55	1.30	SV3301 (3N43)	21.10	16.20
SG269 (1N807)	1.05	.82	SV6 (1N762)	1.55	1.30	SV3302 (3N44)	27.90	21.50
SG701	.42	.32	SV7 (1N763)	1.55	1.30	SV4010		
SG702	.50	.37	SV9 (1N764)	1.55	1.30	THRU	6.00	4.80
SG703	.65	.50	SV11 (1N765)	1.55	1.30	SV4050		
SG1535 (1N919)	5.50	4.55	SV13 (1N766)	1.55	1.30	THRU		
SG1691	2.20	1.50	SV15 (1N767)	1.55	1.30	SV4010A		
SG5000 (1N4308)	2.75	2.10	SV18 (1N768)	1.55	1.30	THRU	8.40	6.75
SG5100 (1N4309)	2.25	1.60	SV24 (1N769)	1.55	1.30	SV4050A		
SG5200 (1N4310)	2.50	1.85	SV121			THRU	7.50	6.00
SG5250	3.25	2.50	THRU	1.80	1.55	SV4075		
SG5260	3.50	2.75	SV129			SV4051A		
SG5270	3.75	3.00	SV131			THRU	10.50	8.40
SG5300 (1N4311)	3.00	2.30	THRU	1.80	1.55	SV4075A		
SG5400 (1N4312)	3.25	2.45	SV139			THRU		
SL91	.75	.43	SV141			THRU	10.00	8.00
SL92	1.40	.90	THRU	1.80	1.55	SV4100		
SL93	1.75	1.10	SV144			THRU		
SL608 (1N2501)	1.60	1.00	SV168			SV4076A		
SL610 (1N2502)	3.00	2.00	THRU	1.80	1.55	THRU	14.00	11.20
SL612 (1N2503)	6.00	4.10	SV172			SV4100A		
SL615 (1N2504)	8.00	5.70	SV904,R	5.00	3.75	SV7401	70.00	54.00
SL708 (1N2505)	1.80	1.15	SV905,R	5.00	3.75	SV7402	80.00	63.00
SL710 (1N2506)	3.50	2.35	(1N2042,R)			SV7403	90.00	72.00
SL712 (1N2507)	7.00	4.90	SV908,R	5.00	3.75	SV7404	100.00	80.00
SL715 (1N2508)	9.00	6.00	(1N2044,R)			SV7405	110.00	90.00
SM72	1.50	1.00	SV910,R	5.00	3.75	SV7406	120.00	98.00
SNT4	3.25	2.60	(1N2045,R)			SV8221	9.55	7.10
SNT204	3.85	3.25	SV912,R	5.00	3.75	SV8221A	11.40	8.50
ST1243(TI493)	1.80	1.20	(1N2046,R)			SV8221B	13.20	9.90
ST1244(TI494)	2.40	1.60	SV915,R	5.00	3.75	SV8222	11.40	8.50
ST1245(TI495)	3.00	2.00	(1N2047,R)			SV8223A	13.50	10.10
ST1700	1.26	.83	SV918,R	5.00	3.75	SV8223B	15.90	11.90
ST2110	1.20	.80	(1N2048,R)			SV8227	17.30	12.80
ST2120	7.50	5.00	SV924,R	5.00	3.75	SV8227A	20.60	15.40
ST2130	2.40	1.60	(1N2049,R)			SV8227B	24.00	17.90
ST4341	1.90	1.35	SV927,R	5.00	3.75	SV8229	50.50	41.25
ST4375	17.50	11.70	THRU			SV8231	13.95	10.40
ST4376	23.00	15.35	SV982,R			SV8231A	16.60	12.40
ST4388	2.20	1.65	SV2004,R	9.00	6.00	SV8231B	19.35	14.45
ST4402	3.75	2.50	SV2005,R	9.00	6.00	SV8233	16.60	12.40
ST5610	10.80	7.20	SV2006,R			SV8233A	19.90	14.80
ST5611	9.30	6.20	THRU	7.25	5.10	SV8233B	23.30	17.40
ST5612	7.80	5.20	SV2025,R			SV8237	25.10	18.70
ST5613	4.65	3.15	SV2044,R			SV8237A	30.10	22.50
ST5614	4.10	2.75	THRU	7.25	5.10	SV8237B	35.00	26.10
ST6110	1.20	.80	SV2047,R			SV8239	80.50	60.00
ST6120	1.85	1.25	THRU	7.25	5.10	SV8241	18.30	13.65
ST6125	1.45	.97	SV3140	2.80	1.70	SV8241A	21.70	16.20
ST6130	1.20	.80				SV8241B	25.60	19.10
ST6573	2.45	1.65				SV8243	21.80	16.30
ST6574	2.45	1.65						

Transitron SEMICONDUCTORS

TYPE	UNIT PRICE		TYPE	UNIT PRICE		TYPE	UNIT PRICE	
	1-99	100-999		1-99	100-999		1-99	100-999
SV8243A	26.10	19.50	T25G (1N283)	.51	.40	TCR74	3.30	2.20
SV8243B	30.50	22.85	T26G	.56	.43	TCR75	3.75	2.50
SV8247	33.00	24.55	T27G	.68	.49	TCR76	5.50	3.35
SV8247A	39.50	29.60	TBS20A	5.00	3.30	TCR105C	1.70	1.15
SV8247B	44.70	33.40	TBS20AS	5.20	3.50	TCR205C	1.90	1.30
SV8249	87.00	65.00	TBS20B	4.30	2.80	TCR251(2N2009)	3.75	2.50
SV9785	30.00	24.00	TBS20BS	4.50	3.00	TCR305C	3.60	2.70
SV9786	34.00	27.00	TBS20C	3.50	2.25	TCR405C	5.25	3.50
SVC625	17.25	14.25	TCA1003	20.50	17.25	TCR501(2N2010)	4.15	2.75
SVC650	14.50	11.50	TCA1004	22.30	18.90	TCR505	5.70	3.80
SVC925	13.75	10.25	TCA3000	32.00	24.90	TCR510	8.90	5.55
SVC950	10.50	7.25	TCA3001	16.70	13.40	TCR520	9.40	6.25
SVC1125	18.50	15.25	TCA3002	21.20	17.00	TCR1001(2N2011)	6.60	4.40
SVM61	4.25	2.85	TCA3003	37.45	29.90	TCR1005	7.00	4.75
SVM81	4.25	2.85	TCA3004	20.10	16.10	TCR1010	9.45	6.30
SVM91	4.25	2.85	TCA3005	25.95	21.90	TCR1020	10.50	7.00
SVM111	4.50	3.10	TCA3006	37.50	32.15	TCR1505	9.50	6.00
SVM605	5.00	3.35	TCA3007	14.50	11.60	TCR1510	11.50	7.65
SVM805	5.00	3.35	TCA3008	17.15	13.30	TCR1520	12.75	8.50
SVM905	5.00	3.35	TCA3009	19.60	15.10	TCR2001(2N2012)	12.50	8.25
SVM1105	5.85	3.19	TCA3010	17.50	13.40	TCR2005	11.50	7.75
SVM602	7.50	5.05	TCA3011	21.00	16.20	TCR2010	13.50	9.00
SVM802	10.75	7.35	TCA3012	27.90	21.50	TCR2020	15.00	10.00
SVM902	7.50	5.05	TCA3015	44.30	35.50	TCR2505	13.75	9.00
SVM1102	10.75	7.35	TCA3016	18.00	14.40	TCR2510	16.15	10.75
SVM601	19.50	13.50	TCA3091	11.50	10.65	TCR2520	18.00	12.00
SVM801	27.00	22.00	**TCA3111N,P	74.00	65.00	TCR3001(2N2013)	24.00	16.00
SVM901	19.50	13.50	**TCA3112N,P	85.00	76.00	TCR3005	16.00	10.65
SVR12A	6.25	4.75	**TCA3113N,P	100.00	90.00	TCR3010	18.75	12.50
SVR12B	7.85	5.90	**TCA3114N,P	115.00	103.00	TCR3020	21.00	14.00
SVR12C	13.70	10.20	**TCA3115N,P	130.00	116.00	TCR3505	18.50	12.00
SVR19A	9.10	6.85	**TCA3116N,P	89.00	80.00	TCR3510	21.40	14.25
SVR19B	11.55	8.65	**TCA3117N,P	102.00	91.00	TCR3520	24.00	16.00
T1 (1N139)	.27	.20	**TCA3118N,P	115.00	105.00	TCR4001(2N2014)	34.15	27.75
T2 (1N140)	.38	.29	**TCA3119N,P	130.00	118.00	TCR4005	20.00	13.60
T6 (1N144)	.68	.51	**TCA3120N,P	145.00	131.00	TCR4010	23.65	15.75
T7	1.75	1.31	TCR3	1.95	1.30	TCR4020	26.25	17.50
T9	1.35	1.45	TCR8	1.60	1.25	TFR105	2.50	1.80
T11	1.20	.95	TCR13	2.25	1.50	TFR105Z	10.00	6.50
T12	.50	.40	TCR18	1.75	1.40	TFR110	3.00	2.00
T13	1.69	1.22	TCR18	1.75	1.40	TFR1102	12.00	8.25
T14	1.16	.84	TCR23	2.55	1.70	TFR120	4.00	2.80
T15	2.70	1.80	TCR28	1.95	1.55	TFR120Z	16.50	10.75
T16	1.45	1.25	TCR33	3.75	2.50	TFR140	10.00	6.00
T17	1.35	.95	TCR35C	1.40	.95	TFR140Z	19.00	12.50
T18	2.00	1.40	TCR38	3.05	2.40	TFR305	3.50	2.40
T20	1.94	1.46	@TCR40C	1.15	.77	TFR305Z	13.50	8.75
T21	1.85	1.39	@TCR41C	1.25	.83	TFR310	4.00	2.80
T22	2.10	1.58	@TCR42C	1.40	.93	TFR310Z	16.00	9.90
T23	1.02	.79	TCR43	5.50	3.35	TFR320	5.00	3.50
T26	.75	.55	@TCR43C	1.55	1.03	TFR320Z	18.75	13.00
T27	1.05	.89	@TCR44C	1.65	1.12	TFR340	12.50	8.30
T1G	.27	.20	@TCR45C	1.75	1.17	TFR340Z	23.50	15.25
T2G	.40	.30	TCR48	4.40	3.50	TFR605	4.00	2.80
T3G	.69	.52	TCR50	7.00	4.65	TFR605Z	16.95	10.75
T4G	.62	.47	TCR51	9.00	6.00	TFR610	5.00	3.50
T5G	.84	.63	TCR52	11.10	7.40	TFR610Z	20.10	11.50
T6G (1N279)	.29	.22	TCR53	13.50	9.40	TFR620	7.00	4.80
T7G (1N270)	.32	.25	TCR54	15.75	10.50	TFR620Z	23.25	14.60
T8G	2.00	1.50	TCR55	18.40	12.25	TFR640	16.00	11.00
T9G	1.55	1.15	TCR56	23.65	15.75	TFR640Z	29.60	18.90
T11G (1N273)	.66	.50	TCR65C	1.50	1.00	TFR1205	5.00	3.50
T12G	.41	.32	TCR70	1.95	1.30	TFR1205Z	19.80	12.35
T13G	1.05	.78	TCR71	2.25	1.50	TFR1210	6.50	4.60
T14G	.95	.70	TCR72	2.45	1.60	TFR1210Z	23.25	14.85
T15G	1.70	1.25	TCR73	2.55	1.70	TFR1220	8.00	5.70
T16G (1N276)	.31	.24				TFR1220Z	26.75	17.30
T17G (1N277)	.34	.26				TFR1240	24.00	16.00
T18G (1N278)	.88	.65				TFR1240Z	35.50	23.10
T19G	2.00	1.50				TK5	.40	.26
T20G	1.25	.90				TK10	.50	.30
T21G	1.20	.86				TK11	.80	.55
T22G	1.25	.90				TK20	.55	.33
T23G	.77	.56				-TK21	1.90	.65
T24G	.72	.51				TK30	.60	.39
						TK40	.65	.42
						-TK41	1.80	1.30
						-TK61	3.00	2.00
						TKF5	2.10	1.60

Transitron SEMICONDUCTORS

TYPE	UNIT PRICE		TYPE	UNIT PRICE		TYPE	UNIT PRICE	
	1-99	100-999		1-99	100-999		1-99	100-999
TKF10	2.80	1.95	TM42	2.50	1.60	TR53	2.90	1.90
TKF20	4.55	3.20	TM43	2.50	1.60	TR100	1.70	1.25
TKF40	7.00	4.90	TM44 (1N2029)	3.25	2.20	TR103	3.30	2.20
TKF60	8.75	6.10	TM47 (1N1585)	3.30	2.25	TR150	1.70	1.25
TKF80	11.20	7.85	TM48 (1N2495)	3.50	2.40	TR151 (1N2021)	3.10	2.15
TKF100	14.00	9.80	TM49	3.75	2.55	TR152	3.10	2.15
*TL1			TM51	3.40	2.30	TR153	3.60	2.30
THRU	6.00	5.00	TM52	3.00	2.00	TR200	1.70	1.25
*TL4			TM53	3.00	2.00	TR203	3.10	2.40
*TL1F,R			TM54 (1N2030)	3.60	2.40	TR251 (1N2022)	4.70	3.10
THRU	6.50	5.45	TM55	3.50	2.35	TR252	4.80	3.25
*TL4F,R			TM56	3.50	2.35	TR253	5.50	3.65
TL11	1.85	1.40	TM57 (1N1586)	3.70	2.50	TR300	2.10	1.55
TL12	2.40	1.85	TM58 (1N2496)	3.90	2.65	TR301 (1N2023)	4.85	3.25
TL21	2.40	1.85	TM59	4.25	2.90	TR302	5.00	3.40
TL22	2.75	2.10	TM61	4.00	3.00	TR303	5.85	3.90
TL31	3.00	2.20	TM62	3.80	2.50	TR351 (1N2024)	5.00	3.40
TL32	3.40	2.60	TM63	3.80	2.50	TR352	5.20	3.60
TL41	3.40	2.60	TM64 (1N2031)	4.15	2.80	TR353	5.10	4.05
TL42	4.00	3.00	TM65	4.00	2.90	TR400	3.90	2.40
TL51	4.00	3.00	TM66	4.00	2.90	TR401 (1N2025)	5.15	3.50
TL61	4.50	3.40	TM67	4.25	2.90	TR402	5.40	3.75
*TLA1F,R			TM68 (1N2497)	4.40	3.00	TR403	6.45	4.30
THRU	8.05	6.95	TM69	4.80	3.25	TR500	4.20	2.70
*TLA4F,R			TM74	6.50	4.50	TR501	5.25	3.60
*TLA1	7.50	6.50	TM75	6.00	4.20	TR502	5.60	3.85
*TLA2	7.55	6.50	TM76	6.00	4.20	TR503	6.50	4.40
*TLA3	7.55	6.50	TM78	7.00	5.00	TR600	4.50	3.00
*TLA4	7.55	6.50	TM79	8.00	5.50	TR601	5.60	3.75
*TLD1			TM84	7.50	5.20	TR602	5.90	3.95
THRU	6.15	5.15	TM85	7.00	4.90	TR603	7.40	4.90
*TLD4			TM86	6.75	4.75	TR701	7.50	5.00
*TLD1F,R			TM88	8.00	5.50	TR702	8.50	6.00
THRU	6.65	5.60	TM89	9.10	6.00	TR800	6.00	4.00
*TLD4F,R			TM105	9.00	7.00	TR801	8.00	5.70
*TLDA1	7.70	6.65	TM106 (1N2372)	7.00	5.60	TR802	10.00	7.50
*TLDA2	7.00	6.65	TM124	16.00	12.00	TR1120	.85	.65
*TLDA3	7.70	6.65	TM125	13.50	9.50	TR1121	.91	.70
*TLDA4	7.70	6.65	TM126	10.00	7.00	TR1122	.97	.78
*TLM01	6.15	5.15	TM155	13.90	10.40	TR1123	1.05	.87
TM1	1.10	.70	TM156	10.50	7.50	TR1124	1.20	.97
TM2	.95	.70	TMD01			TR1125	1.45	1.20
TM3	.80	.60	THRU	6.00	4.50	TR1126	1.90	1.55
TM4 (1N2026)	1.10	.70	TMD10			TR1128	4.20	3.50
TM5	1.10	.70	TMD01A			TR1130	5.70	4.75
TM6	1.10	.70	THRU	7.75	5.75	-TSW20C	1.20	.80
TM7 (1N1581)	1.10	.70	TMD10A			TSW21C	1.80	1.20
TM8 (1N2491)	1.25	.80	TMD20	1.55	1.20	TSW22C	1.95	1.45
TM9	1.30	.85	TMD24	2.50	1.90	TSW23C	2.50	1.70
TM11	1.20	.80	TM25	3.15	2.35	TSW30	3.30	2.30
TM12	1.20	.80	TMD27	3.40	2.70	-TSW30C	1.58	1.05
TM13	1.20	.80	TMD40	1.85	1.40	TSW31	3.00	2.10
TM17 (1N1582)	1.20	.80	TMD41	2.25	1.55	TSW31S (2N948)	8.45	5.90
TM18 (1N2492)	1.30	.85	TMD42	2.50	2.05	TSW40C	.90	.60
TM19	1.40	.90	TMD45	2.75	2.30	TSW41C	1.00	.67
TM21	1.95	1.30	TMD914	4.60	3.20	TSW42C	1.15	.77
TM22	1.95	1.25	TMD916	5.50	4.00	TSW43C	1.30	.87
TM23	1.95	1.25	TMD7000	2.75	2.10	TSW44C	1.40	.94
TM24 (1N2027)	1.95	1.30	TMD7100	2.25	1.60	TSW45C	1.50	1.00
TM27 (1N1583)	1.95	1.30	TMD7200	2.50	1.85	TSW60	3.45	2.50
TM28 (1N2493)	2.00	1.35	TMD7300	3.00	2.30	-TSW60C	1.80	1.20
TM29	2.20	1.50	TMD7400	3.25	2.45	TSW61	3.25	2.30
TM31	2.40	1.60	TP100	.55	.41	TSW61S (2N949)	11.00	7.70
TM32	2.40	1.60	TP101	.61	.46	TSW100	3.70	2.70
TM33	2.40	1.60	TP200	.69	.52	-TSW100C	2.04	1.36
TM34 (1N2028)	2.45	1.65	TP201	.76	.57	TSW101	3.45	2.55
TM37 (1N1584)	2.50	1.70	TP300	.84	.63	TSW101S (2N950)	16.20	11.35
TM38 (1N2494)	2.70	1.85	TP301	.91	.68	TSW200	4.75	3.60
TM39	3.00	2.05	TP400	.99	.74	-TSW200C	2.76	1.84
TM41	3.00	2.10	TP401	1.09	.82	TSW201	4.65	3.45
			TR30	1.40	1.10	-TSW201S (2N951)	27.00	18.90
			TR50	1.60	1.20			

HLTTL INTEGRATED CIRCUIT PRICE LIST

MILITARY AND INDUSTRIAL TYPES

Type	Function	Temp Range	Fan Out	1-24	25-99	100-999
TNG3011P	SINGLE 8 INPUT NAND/NOR GATE	M	15	17.25	13.80	11.70
TNG3011F	SINGLE 8 INPUT NAND/NOR GATE	M	15	17.25	13.80	11.70
TNG3012P	SINGLE 8 INPUT NAND/NOR GATE	I	15	12.95	10.35	8.75
TNG3012F	SINGLE 8 INPUT NAND/NOR GATE	I	15	12.95	10.35	8.75
TNG3013P	SINGLE 8 INPUT NAND/NOR GATE	M	7	14.70	11.70	9.90
TNG3013F	SINGLE 8 INPUT NAND/NOR GATE	M	7	14.70	11.70	9.90
TNG3014P	SINGLE 8 INPUT NAND/NOR GATE	I	7	9.50	7.60	6.35
TNG3014F	SINGLE 8 INPUT NAND/NOR GATE	I	7	8.65	6.90	5.85
TNG3051P	SINGLE 8 INPUT NAND/NOR GATE, EXPANDABLE	M	15	18.95	15.15	12.60
TNG3051F	SINGLE 8 INPUT NAND/NOR GATE, EXPANDABLE	M	15	18.95	15.15	12.60
TNG3052P	SINGLE 8 INPUT NAND/NOR GATE, EXPANDABLE	I	15	14.25	11.40	9.50
TNG3052F	SINGLE 8 INPUT NAND/NOR GATE, EXPANDABLE	I	15	14.25	11.40	9.50
TNG3053P	SINGLE 8 INPUT NAND/NOR GATE, EXPANDABLE	M	7	16.15	12.90	10.75
TNG3053F	SINGLE 8 INPUT NAND/NOR GATE, EXPANDABLE	M	7	16.15	12.90	10.75
TNG3054P	SINGLE 8 INPUT NAND/NOR GATE, EXPANDABLE	I	7	10.45	8.35	7.00
TNG3054F	SINGLE 8 INPUT NAND/NOR GATE, EXPANDABLE	I	7	9.50	7.60	6.35
TNG3111P	DUAL 4 INPUT NAND/NOR GATE	M	15	17.25	13.80	11.70
TNG3111F	DUAL 4 INPUT NAND/NOR GATE	M	15	17.25	13.80	11.70
TNG3112P	DUAL 4 INPUT NAND/NOR GATE	I	15	12.95	10.35	8.75
TNG3112F	DUAL 4 INPUT NAND/NOR GATE	I	15	12.95	10.35	8.75
TNG3113P	DUAL 4 INPUT NAND/NOR GATE	M	7	14.70	11.70	9.90
TNG3113F	DUAL 4 INPUT NAND/NOR GATE	M	7	14.70	11.70	9.90
TNG3114P	DUAL 4 INPUT NAND/NOR GATE	I	7	9.50	7.60	6.35
TNG3114F	DUAL 4 INPUT NAND/NOR GATE	I	7	8.65	6.90	5.85
-TNG3312P	TRIPLE 3 INPUT NAND/NOR GATE	I	15	14.25	11.40	9.55
-TNG3312F	TRIPLE 3 INPUT NAND/NOR GATE	I	15	14.25	11.40	9.55
-TNG3313P	TRIPLE 3 INPUT NAND/NOR GATE	M	7	16.40	13.10	11.00
-TNG3313F	TRIPLE 3 INPUT NAND/NOR GATE	M	7	16.40	13.10	11.00
-TNG3314P	TRIPLE 3 INPUT NAND/NOR GATE	I	7	10.60	8.50	7.10
-TNG3314F	TRIPLE 3 INPUT NAND/NOR GATE	I	7	9.60	7.65	6.45
-TNG3412P	QUAD 2 INPUT NAND/NOR GATE	I	15	15.70	12.55	10.50
-TNG3412F	QUAD 2 INPUT NAND/NOR GATE	I	15	15.70	12.55	10.50
-TNG3413P	QUAD 2 INPUT NAND/NOR GATE	M	7	18.00	14.40	12.00
-TNG3413F	QUAD 2 INPUT NAND/NOR GATE	M	7	18.00	14.40	12.00
-TNG3414P	QUAD 2 INPUT NAND/NOR GATE	I	7	11.65	9.30	7.80
-TNG3414F	QUAD 2 INPUT NAND/NOR GATE	I	7	10.60	8.50	7.10
TNG3511P	DUAL 4 AND EXPANDER GATE	M		12.00	9.60	8.00
TNG3511F	DUAL 4 AND EXPANDER GATE	M		12.00	9.60	8.00
TNG3512P	DUAL 4 AND EXPANDER GATE	I		7.80	6.30	5.30
TNG3512F	DUAL 4 AND EXPANDER GATE	I		7.20	5.45	4.80
TNG3211P	EXCLUSIVE OR GATE	M	15	17.25	13.80	11.70
TNG3211F	EXCLUSIVE OR GATE	M	15	17.25	13.80	11.70
TNG3212P	EXCLUSIVE OR GATE	I	15	12.95	10.35	8.75
TNG3212F	EXCLUSIVE OR GATE	I	15	12.95	10.35	8.75
TNG3213P	EXCLUSIVE OR GATE	M	7	14.70	11.70	9.90
TNG3213F	EXCLUSIVE OR GATE	M	7	14.70	11.70	9.90
TNG3214P	EXCLUSIVE OR GATE	I	7	9.50	7.60	6.35
TNG3214F	EXCLUSIVE OR GATE	I	7	8.65	6.90	5.85
TNG3251P	EXCLUSIVE OR GATE, EXPANDABLE	M	15	18.95	15.15	12.60
TNG3251F	EXCLUSIVE OR GATE, EXPANDABLE	M	15	18.95	15.15	12.60
TNG3252P	EXCLUSIVE OR GATE, EXPANDABLE	I	15	14.25	11.40	9.50
TNG3252F	EXCLUSIVE OR GATE, EXPANDABLE	I	15	14.25	11.40	9.50
TNG3253P	EXCLUSIVE OR GATE, EXPANDABLE	M	7	16.15	12.90	10.75
TNG3253F	EXCLUSIVE OR GATE, EXPANDABLE	M	7	16.15	12.90	10.75
TNG3254P	EXCLUSIVE OR GATE, EXPANDABLE	I	7	10.45	8.35	7.00
TNG3254F	EXCLUSIVE OR GATE, EXPANDABLE	I	7	9.50	7.60	6.35
TNG4211P	DUAL EXCLUSIVE OR GATE	M	15	28.40	22.70	18.90
TNG4211F	DUAL EXCLUSIVE OR GATE	M	15	28.40	22.70	18.90
TNG4212P	DUAL EXCLUSIVE OR GATE	I	15	22.80	18.25	15.20
TNG4212F	DUAL EXCLUSIVE OR GATE	I	15	22.80	18.25	15.20
TNG4213P	DUAL EXCLUSIVE OR GATE	M	7	22.80	18.25	15.20
TNG4213F	DUAL EXCLUSIVE OR GATE	M	7	22.80	18.25	15.20
TNG4214P	DUAL EXCLUSIVE OR GATE	I	7	15.70	12.55	10.45
TNG4214F	DUAL EXCLUSIVE OR GATE	I	7	14.25	11.40	9.50
TNG4251P	DUAL EXCLUSIVE OR GATE EXPANDABLE	M	15	31.20	25.00	20.80
TNG4251F	DUAL EXCLUSIVE OR GATE EXPANDABLE	M	15	31.20	25.00	20.80
TNG4252P	DUAL EXCLUSIVE OR GATE EXPANDABLE	I	15	25.00	20.00	16.65
TNG4252F	DUAL EXCLUSIVE OR GATE EXPANDABLE	I	15	25.00	20.00	16.65
TNG4253P	DUAL EXCLUSIVE OR GATE EXPANDABLE	M	7	25.00	20.00	16.65

TEMPERATURE RANGE KEY: M = -55 to +125°C, I = 0 to +75°C, C = +15 to +55°C

HLTTL INTEGRATED CIRCUIT PRICE LIST

Type	Function	Temp Range	Fan Out	1-24	25-99	100-999
TNG4253F	DUAL EXCLUSIVE OR GATE EXPANDABLE	M	7	25.00	20.00	16.65
TNG4254P	DUAL EXCLUSIVE OR GATE EXPANDABLE	I	7	17.20	13.75	11.50
TNG4254F	DUAL EXCLUSIVE OR GATE EXPANDABLE	I	7	15.65	12.50	10.45
TNG4315P	TRIPLE 3 INPUT OR GATE EXPANDABLE	M	15	22.95	18.40	15.30
TNG4315F	TRIPLE 3 INPUT OR GATE EXPANDABLE	M	15	22.95	18.40	15.30
-TNG4316P	TRIPLE 3 INPUT OR GATE EXPANDABLE	I	15	14.25	11.40	9.55
-TNG4316F	TRIPLE 3 INPUT OR GATE EXPANDABLE	I	15	14.25	11.40	9.55
-TNG4317P	TRIPLE 3 INPUT OR GATE EXPANDABLE	M	7	16.40	13.10	11.00
-TNG4317F	TRIPLE 3 INPUT OR GATE EXPANDABLE	M	7	16.40	13.10	11.00
-TNG4318P	TRIPLE 3 INPUT OR GATE EXPANDABLE	I	7	10.60	8.50	7.10
-TNG4318F	TRIPLE 3 INPUT OR GATE EXPANDABLE	I	7	9.60	7.65	6.45
TNG4411P	QUAD 2 INPUT OR GATES	M	15	23.50	18.80	15.65
TNG4411F	QUAD 2 INPUT OR GATES	M	15	23.50	18.80	15.65
-TNG4412P	QUAD 2 INPUT OR GATES	I	15	14.35	11.45	9.60
-TNG4412F	QUAD 2 INPUT OR GATES	I	15	14.35	11.45	9.60
-TNG4413P	QUAD 2 INPUT OR GATES	M	7	16.40	13.10	11.00
-TNG4413F	QUAD 2 INPUT OR GATES	M	7	16.40	13.10	11.00
-TNG4414P	QUAD 2 INPUT OR GATES	I	7	10.60	8.50	7.10
-TNG4414F	QUAD 2 INPUT OR GATES	I	7	9.60	7.65	6.45
TNG4415P	QUAD 2 INPUT OR GATE EXPANDABLE	M	15	25.85	20.70	17.25
TNG4415F	QUAD 2 INPUT OR GATE EXPANDABLE	M	15	25.85	20.70	17.25
-TNG4416P	QUAD 2 INPUT OR GATE EXPANDABLE	I	15	15.70	12.55	10.50
-TNG4416F	QUAD 2 INPUT OR GATE EXPANDABLE	I	15	15.70	12.55	10.50
-TNG4417P	QUAD 2 INPUT OR GATE EXPANDABLE	M	7	18.00	14.40	12.00
-TNG4417F	QUAD 2 INPUT OR GATE EXPANDABLE	M	7	18.00	14.40	12.00
-TNG4418P	QUAD 2 INPUT OR GATE EXPANDABLE	I	7	11.65	9.30	7.80
-TNG4418F	QUAD 2 INPUT OR GATE EXPANDABLE	I	7	10.60	8.50	7.10
TNG4611P	EXCLUSIVE OR GATE WITH COMPLEMENT	M	15	24.85	19.90	16.60
TNG4611F	EXCLUSIVE OR GATE WITH COMPLEMENT	M	15	24.85	19.90	16.60
TNG4612P	EXCLUSIVE OR GATE WITH COMPLEMENT	I	15	19.90	15.90	13.30
TNG4612F	EXCLUSIVE OR GATE WITH COMPLEMENT	I	15	19.90	15.90	13.30
TNG4613P	EXCLUSIVE OR GATE WITH COMPLEMENT	M	7	19.90	15.90	13.30
TNG4613F	EXCLUSIVE OR GATE WITH COMPLEMENT	M	7	19.90	15.90	13.30
TNG4614P	EXCLUSIVE OR GATE WITH COMPLEMENT	I	7	13.90	11.10	9.25
TNG4614F	EXCLUSIVE OR GATE WITH COMPLEMENT	I	7	12.00	10.10	8.40
TNG4011P	DUAL 4 INPUT OR EXPANDER GATES	M		12.00	9.60	8.00
TNG4011F	DUAL 4 INPUT OR EXPANDER GATES	M		12.00	9.60	8.00
TNG4012P	DUAL 4 INPUT OR EXPANDER GATES	I		7.90	6.35	5.30
TNG4012F	DUAL 4 INPUT OR EXPANDER GATES	I		7.20	5.75	4.80
TNG4511P	QUAD 2 INPUT OR EXPANDER GATES	M		13.85	11.10	9.25
TNG4511F	QUAD 2 INPUT OR EXPANDER GATES	M		13.85	11.10	9.25
TNG4512P	QUAD 2 INPUT OR EXPANDER GATES	I		9.00	7.15	6.00
TNG4512F	QUAD 2 INPUT OR EXPANDER GATES	I		8.15	6.50	5.45
TNG5121P	SINGLE 4 INPUT LINE DRIVER	M	15	21.20	17.00	14.15
TNG5121F	SINGLE 4 INPUT LINE DRIVER	M	15	21.20	17.00	14.15
TNG5122P	SINGLE 4 INPUT LINE DRIVER	I	15	17.00	13.60	11.35
TNG5122F	SINGLE 4 INPUT LINE DRIVER	I	15	17.00	13.60	11.35
TNG5123P	SINGLE 4 INPUT LINE DRIVER	M	7	17.00	13.60	11.35
TNG5123F	SINGLE 4 INPUT LINE DRIVER	M	7	17.00	13.60	11.35
TNG5124P	SINGLE 4 INPUT LINE DRIVER	I	7	11.80	9.40	7.90
TNG5124F	SINGLE 4 INPUT LINE DRIVER	I	7	10.70	8.55	7.15
TNG5125P	SINGLE 2 INPUT LINE DRIVER	M	40	17.25	13.80	11.50
TNG5125F	SINGLE 2 INPUT LINE DRIVER	M	40	17.25	13.80	11.50
TNG5126P	SINGLE 2 INPUT LINE DRIVER	I	40	13.80	11.05	9.20
TNG5126F	SINGLE 2 INPUT LINE DRIVER	I	40	13.80	11.05	9.20
TNG5127P	SINGLE 2 INPUT LINE DRIVER	M	24	13.80	11.05	9.20
TNG5127F	SINGLE 2 INPUT LINE DRIVER	M	24	13.80	11.05	9.20
TNG5128P	SINGLE 2 INPUT LINE DRIVER	I	24	9.50	7.60	6.35
TNG5128F	SINGLE 2 INPUT LINE DRIVER	I	24	8.65	6.90	5.75
TNG5211P	DUAL 4 INPUT LINE DRIVER	M	40	25.00	20.00	16.70
TNG5211F	DUAL 4 INPUT LINE DRIVER	M	40	25.00	20.00	16.70
TNG5212P	DUAL 4 INPUT LINE DRIVER	I	40	20.00	16.00	13.35
TNG5212F	DUAL 4 INPUT LINE DRIVER	I	40	20.00	16.00	13.35
TNG5213P	DUAL 4 INPUT LINE DRIVER	M	24	20.00	16.00	13.35
TNG5213F	DUAL 4 INPUT LINE DRIVER	M	24	20.00	16.00	13.35
TNG5214P	DUAL 4 INPUT LINE DRIVER	I	24	13.90	11.10	9.25
TNG5214F	DUAL 4 INPUT LINE DRIVER	I	24	12.60	10.10	8.40
TNG5221P	DUAL 2 INPUT LINE DRIVER	M	40	21.20	17.00	14.15
TNG5221F	DUAL 2 INPUT LINE DRIVER	M	40	21.20	17.00	14.15

TEMPERATURE RANGE KEY: M = -55 to +125°C, I = 0 to +75°C, C = +15 to +55°C

HLTTL INTEGRATED CIRCUIT PRICE LIST

Type	Function	Temp Range	Fan Out	1-24	25-99	100-999
TNG5222P	DUAL 2 INPUT LINE DRIVER	I	40	17.00	13.60	11.35
TNG5222F	DUAL 2 INPUT LINE DRIVER	I	40	17.00	13.60	11.35
TNG5223P	DUAL 2 INPUT LINE DRIVER	M	24	17.00	13.60	11.35
TNG5223F	DUAL 2 INPUT LINE DRIVER	M	24	17.00	13.60	11.35
TNG5224P	DUAL 2 INPUT LINE DRIVER	I	24	11.80	9.40	7.85
TNG5224F	DUAL 2 INPUT LINE DRIVER	I	24	10.70	8.55	7.15
TNG5321P	SINGLE 4 INPUT LAMP DRIVER	M	60MA	21.20	17.00	14.15
TNG5321F	SINGLE 4 INPUT LAMP DRIVER	M	60MA	21.20	17.00	14.15
TNG5322P	SINGLE 4 INPUT LAMP DRIVER	I	60MA	17.00	13.60	11.35
TNG5322F	SINGLE 4 INPUT LAMP DRIVER	I	60MA	17.00	13.60	11.35
TNG5325P	SINGLE 2 INPUT LAMP DRIVER	M	60MA	17.25	13.80	11.50
TNG5325F	SINGLE 2 INPUT LAMP DRIVER	M	60MA	17.25	13.80	11.50
TNG5326P	SINGLE 2 INPUT LAMP DRIVER	I	60MA	13.80	11.05	9.20
TNG5326F	SINGLE 2 INPUT LAMP DRIVER	I	60MA	13.80	11.05	9.20
TNG5411P	DUAL 4 INPUT LAMP DRIVER	M	60MA	25.00	20.00	16.70
TNG5411F	DUAL 4 INPUT LAMP DRIVER	M	60MA	25.00	20.00	16.70
TNG5412P	DUAL 4 INPUT LAMP DRIVER	I	60MA	20.00	16.00	13.35
TNG5412F	DUAL 4 INPUT LAMP DRIVER	I	60MA	20.00	16.00	13.35
TNG5421P	DUAL 2 INPUT LAMP DRIVER	M	60MA	21.20	17.00	14.15
TNG5421F	DUAL 2 INPUT LAMP DRIVER	M	60MA	21.20	17.00	14.15
TNG5422P	DUAL 2 INPUT LAMP DRIVER	I	60MA	17.00	13.60	11.35
TNG5422F	DUAL 2 INPUT LAMP DRIVER	I	60MA	17.00	13.60	11.35
-TFF3011P	GATED 2 PHASE FLIP-FLOP	M	15	25.85	20.65	17.25
-TFF3011F	GATED 2 PHASE FLIP-FLOP	M	15	25.85	20.65	17.25
-TFF3012P	GATED 2 PHASE FLIP-FLOP	I	15	18.00	14.40	12.00
-TFF3012F	GATED 2 PHASE FLIP-FLOP	I	15	18.00	14.40	12.00
-TFF3013P	GATED 2 PHASE FLIP-FLOP	M	7	20.70	16.65	13.85
-TFF3013F	GATED 2 PHASE FLIP-FLOP	M	7	20.70	16.65	13.85
-TFF3014P	GATED 2 PHASE FLIP-FLOP	I	7	13.50	10.40	9.05
-TFF3014F	GATED 2 PHASE FLIP-FLOP	I	7	12.25	9.80	8.20
TFF3111P	4 INPUT MASTER SLAVE FLIP-FLOP WITH BUFFER	M	15	38.20	30.60	25.50
TFF3111F	4 INPUT MASTER SLAVE FLIP-FLOP WITH BUFFER	M	15	38.20	30.60	25.50
TFF3112P	4 INPUT MASTER SLAVE FLIP-FLOP WITH BUFFER	I	15	30.60	24.50	20.30
TFF3112F	4 INPUT MASTER SLAVE FLIP-FLOP WITH BUFFER	I	15	30.60	24.50	20.30
TFF3113P	4 INPUT MASTER SLAVE FLIP-FLOP WITH BUFFER	M	7	30.60	24.50	20.30
TFF3113F	4 INPUT MASTER SLAVE FLIP-FLOP WITH BUFFER	M	7	30.60	24.50	20.30
TFF3114P	4 INPUT MASTER SLAVE FLIP-FLOP WITH BUFFER	I	7	21.30	17.00	14.20
TFF3114F	4 INPUT MASTER SLAVE FLIP-FLOP WITH BUFFER	I	7	21.30	17.00	14.20
TFF3115P	2 INPUT MASTER SLAVE FLIP-FLOP WITH BUFFER	M	15	33.80	27.00	22.50
TFF3115F	2 INPUT MASTER SLAVE FLIP-FLOP WITH BUFFER	M	15	33.80	27.00	22.50
TFF3116P	2 INPUT MASTER SLAVE FLIP-FLOP WITH BUFFER	I	15	27.00	21.60	18.00
TFF3116F	2 INPUT MASTER SLAVE FLIP-FLOP WITH BUFFER	I	15	27.00	21.60	18.00
TFF3117P	2 INPUT MASTER SLAVE FLIP-FLOP WITH BUFFER	M	7	27.00	21.60	18.00
TFF3117F	2 INPUT MASTER SLAVE FLIP-FLOP WITH BUFFER	M	7	27.00	21.60	18.00
TFF3118P	2 INPUT MASTER SLAVE FLIP-FLOP WITH BUFFER	I	7	20.75	16.60	13.80
TFF3118F	2 INPUT MASTER SLAVE FLIP-FLOP WITH BUFFER	I	7	18.85	15.10	12.55
TFF3161P	3J,3K MASTER SLAVE JK FLIP-FLOP	M	15	29.40	23.50	19.60
TFF3161F	3J,3K MASTER SLAVE JK FLIP-FLOP	M	15	29.40	23.50	19.60
TFF3162P	3J,3K MASTER SLAVE JK FLIP-FLOP	I	15	23.50	18.80	15.70
TFF3162F	3J,3K MASTER SLAVE JK FLIP-FLOP	I	15	23.50	18.80	15.70
TFF3163P	3J,3K MASTER SLAVE JK FLIP-FLOP	M	7	23.50	18.80	15.70
TFF3163F	3J,3K MASTER SLAVE JK FLIP-FLOP	M	7	23.50	18.80	15.70
TFF3164P	3J,3K MASTER SLAVE JK FLIP-FLOP	I	7	18.05	14.40	12.05
TFF3164F	3J,3K MASTER SLAVE JK FLIP-FLOP	I	7	16.40	13.10	10.95
TFF3165P	2J,2K MASTER SLAVE JK FLIP-FLOP	M	15	26.45	21.15	17.60
TFF3165F	2J,2K MASTER SLAVE JK FLIP-FLOP	M	15	26.45	21.15	17.60
TFF3166P	2J,2K MASTER SLAVE JK FLIP-FLOP	I	15	21.15	16.90	14.10
TFF3166F	2J,2K MASTER SLAVE JK FLIP-FLOP	I	15	21.15	16.90	14.10
TFF3167P	2J,2K MASTER SLAVE JK FLIP-FLOP	M	7	21.15	16.90	14.10
TFF3167F	2J,2K MASTER SLAVE JK FLIP-FLOP	M	7	21.15	16.90	14.10
TFF3168P	2J,2K MASTER SLAVE JK FLIP-FLOP	I	7	16.35	13.10	10.90
TFF3168F	2J,2K MASTER SLAVE JK FLIP-FLOP	I	7	14.85	11.90	9.90
TFF3121P	4 INPUT MASTER SLAVE FLIP-FLOP W/O BUFFER	M	15	29.40	23.50	19.60
TFF3121F	4 INPUT MASTER SLAVE FLIP-FLOP W/O BUFFER	M	15	29.40	23.50	19.60
TFF3122P	4 INPUT MASTER SLAVE FLIP-FLOP W/O BUFFER	I	15	23.50	18.80	15.70
TFF3122F	4 INPUT MASTER SLAVE FLIP-FLOP W/O BUFFER	I	15	23.50	18.80	15.70
TFF3123P	4 INPUT MASTER SLAVE FLIP-FLOP W/O BUFFER	M	7	23.50	18.80	15.70
TFF3123F	4 INPUT MASTER SLAVE FLIP-FLOP W/O BUFFER	M	7	23.50	18.80	15.70

TEMPERATURE RANGE KEY: M = -55 to +125°C, I = 0 to +75°C, C = +15 to +55°C

HLTL INTEGRATED CIRCUIT PRICE LIST

Type	Function	Temp Range	Fan Out	1-24	25-99	100-999
TFF3124P	4 INPUT MASTER SLAVE FLIP-FLOP W/O BUFFER	I	7	18.05	14.40	12.05
TFF3124F	4 INPUT MASTER SLAVE FLIP-FLOP W/O BUFFER	I	7	16.40	13.10	10.95
TFF3211P	CHARGE STORAGE JK FLIP-FLOP AND INPUTS	M	15	29.40	23.50	19.60
TFF3211F	CHARGE STORAGE JK FLIP-FLOP AND INPUTS	M	15	29.40	23.50	19.60
-TFF3212P	CHARGE STORAGE JK FLIP-FLOP AND INPUTS	I	15	19.50	15.60	13.05
-TFF3212F	CHARGE STORAGE JK FLIP-FLOP AND INPUTS	I	15	19.50	15.60	13.05
TFF3213P	CHARGE STORAGE JK FLIP-FLOP AND INPUTS	M	7	23.50	18.80	15.70
TFF3213F	CHARGE STORAGE JK FLIP-FLOP AND INPUTS	M	7	23.50	18.80	15.70
-TFF3214P	CHARGE STORAGE JK FLIP-FLOP AND INPUTS	I	7	15.85	12.65	10.60
-TFF3214F	CHARGE STORAGE JK FLIP-FLOP AND INPUTS	I	7	14.40	11.50	9.65
TFF3311P	CHARGE STORAGE JK FLIP-FLOP OR INPUTS	M	15	32.40	25.80	21.60
TFF3311F	CHARGE STORAGE JK FLIP-FLOP OR INPUTS	M	15	32.40	25.80	21.60
TFF3312P	CHARGE STORAGE JK FLIP-FLOP OR INPUTS	I	15	25.80	20.60	17.20
TFF3312F	CHARGE STORAGE JK FLIP-FLOP OR INPUTS	I	15	25.80	20.60	17.20
TFF3313P	CHARGE STORAGE JK FLIP-FLOP OR INPUTS	M	7	25.80	20.60	17.20
TFF3313F	CHARGE STORAGE JK FLIP-FLOP OR INPUTS	M	7	25.80	20.60	17.20
TFF3314P	CHARGE STORAGE JK FLIP-FLOP OR INPUTS	I	7	19.80	15.85	13.20
TFF3314F	CHARGE STORAGE JK FLIP-FLOP OR INPUTS	I	7	18.00	14.40	12.00
TNG3481L	QUAD 4 INPUT NAND/NOR GATE	M	15	34.50	27.60	23.00
TNG3482L	QUAD 4 INPUT NAND/NOR GATE	I	15	27.60	22.00	18.40
TNG3483L	QUAD 4 INPUT NAND/NOR GATE	M	7	27.60	22.00	18.40
TNG3484L	QUAD 4 INPUT NAND/NOR GATE	I	7	18.70	15.00	12.50
TFF3181L	DUAL 3J,3K MASTER SLAVE JK FLIP-FLOP	M	15	58.80	47.00	39.60
TFF3182L	DUAL 3J,3K MASTER SLAVE JK FLIP-FLOP	I	15	47.00	37.60	31.40
TFF3183L	DUAL 3J,3K MASTER SLAVE JK FLIP-FLOP	M	7	47.00	37.60	31.40
TFF3184L	DUAL 3J,3K MASTER SLAVE JK FLIP-FLOP	I	7	32.80	26.20	21.90
@TNG6222F	DUAL 4 INPUT AND GATE WITH TRANSIENT CONTROL	I	15	21.40	17.10	14.30
@TNG6222P	DUAL 4 INPUT AND GATE WITH TRANSIENT CONTROL	I	15	23.55	15.70	12.60
@TNG6224F	DUAL 4 INPUT AND GATE WITH TRANSIENT CONTROL	I	7	15.30	12.25	10.25
@TNG6224P	DUAL 4 INPUT AND GATE WITH TRANSIENT CONTROL	I	7	16.80	13.50	11.25
@TNG6252F	DUAL 4 INPUT AND GATE, EXPANDABLE	I	15	18.75	15.00	12.50
@TNG6252P	DUAL 4 INPUT AND GATE, EXPANDABLE	I	15	20.65	16.50	13.75
@TNG6254F	DUAL 4 INPUT AND GATE, EXPANDABLE	I	7	13.40	10.70	8.95
@TNG6254P	DUAL 4 INPUT AND GATE, EXPANDABLE	I	7	14.75	11.80	9.85
@TNG6262F	DUAL 3 INPUT AND GATE WITH TRANS. CONT. EXP.	I	15	22.50	18.00	15.00
@TNG6262P	DUAL 3 INPUT AND GATE WITH TRANS. CONT. EXP.	I	15	24.75	19.80	16.50
@TNG6264F	DUAL 3 INPUT AND GATE WITH TRANS. CONT. EXP.	I	7	16.10	12.90	10.75
@TNG6264P	DUAL 3 INPUT AND GATE WITH TRANS. CONT. EXP.	I	7	17.70	14.20	11.85
@TNG6522F	NON-INV. 4 INPUT LINE DRIVER W/TRANS. CONT.	I	40	22.50	18.00	15.00
@TNG6522P	NON-INV. 4 INPUT LINE DRIVER W/TRANS. CONT.	I	40	24.75	19.80	16.50
@TNG6524F	NON-INV. 4 INPUT LINE DRIVER W/TRANS. CONT.	I	24	16.10	12.90	10.75
@TNG6524P	NON-INV. 4 INPUT LINE DRIVER W/TRANS. CONT.	I	24	17.70	14.20	11.85
@TNG7252F	DUAL 2X2 OR GATE, EXPANDABLE	I	15	23.55	18.80	15.70
@TNG7252P	DUAL 2X2 OR GATE, EXPANDABLE	I	15	25.90	20.70	17.30
@TNG7254F	DUAL 2X2 OR GATE, EXPANDABLE	I	7	16.80	13.50	11.25
@TNG7254P	DUAL 2X2 OR GATE, EXPANDABLE	I	7	18.50	14.85	12.35
@TNG7712F	8, 3 INPUT OR EXPANDER GATE	I		9.95	7.95	6.65
@TNG7712P	8, 3 INPUT OR EXPANDER GATE	I		10.95	8.75	7.30
@TNG7812F	4, 4, 3 INPUT OR EXPANDER GATE	I		9.95	7.95	6.65
@TNG7812P	4, 4, 3 INPUT OR EXPANDER GATE	I		10.95	8.75	7.30
@TNG7912F	DUAL 2, 3 INPUT OR EXPANDER GATES	I		11.95	9.55	8.00
@TNG7912P	DUAL 2, 3 INPUT OR EXPANDER GATES	I		13.15	10.50	8.80
@TFF3512F	D TYPE FLIP-FLOP	I	15	39.20	31.40	26.20
@TFF3512P	D TYPE FLIP-FLOP	I	15	43.10	34.55	28.80
@TFF3514F	D TYPE FLIP-FLOP	I	7	28.00	22.40	18.70
@TFF3514P	D TYPE FLIP-FLOP	I	7	30.80	24.65	20.60
@TMC3162F	16 BIT MEMORY ELEMENT	I	30	41.00	39.00	32.70
@TMC3164F	16 BIT MEMORY ELEMENT	I	15	35.00	28.00	23.40

MIXED QUANTITY PRICING:

Mixed quantity pricing shall apply on all integrated circuit gates in the same type package regardless of quantity, function, fan out or temperature range. Thus, on any one order, the price for individual types will be the price as shown in the quantity column in which the total order quantity would fall.

NOTES:

- The above listed circuits can be supplied with minimum fanout of 20 at a 20% increase in price over the fanout of 15 pricing.
- The above listed gate circuits can be supplied with a maximum propagation delay of 10 nanoseconds ($C_L = 15$ pf, F.O. = 1) for the fan-in of 4 circuits and 12 nanoseconds for the fan-in of 8 circuits without a sacrifice in fanout, power dissipation or noise margin at 20% increase in price.

TEMPERATURE RANGE KEY: M = -55 to +125°C, I = 0 to +75°C, C = +15 to +55°C

1000 →
-20%

plastic dual
in-line
-20%

HLTTL INTEGRATED CIRCUIT PRICE LIST

3. The above listed flip-flop circuits can be supplied with a maximum propagation delay of 20 nanoseconds on the Charge Storage flip-flop and 22 nanoseconds on the Master Slave flip-flops without any sacrifice in fanout, power dissipation or noise margin at a 20% increase in price.
4. The above listed circuits can be provided in the 12 pin TO-5 package. For pricing on these devices consult the Transatron Sales Department, Wakefield, Massachusetts.

† Commercial Series HLTTL Circuits

Type	Function	Temp Range	Fan Out	1-24	25-99	100-999
-TNG3031	SINGLE 4 INPUT NAND/NDR GATE	C	7	3.20	2.55	2.15
-TNG3131	DUAL 2 INPUT NAND/NOR GATE	C	7	4.50	3.60	3.00
-TNG3231	EXCLUSIVE OR GATE	C	7	4.00	3.20	2.70
-TNG3331	SINGLE 4 INPUT LINE DRIVER	C	20	4.00	3.20	2.70
-TNG3431	SINGLE 4 INPUT LAMP DRIVER	C	50MA	4.00	3.20	2.70
-TNG4031	SINGLE 4 INPUT AND EXPANDER	C	7	2.25	1.80	1.50
-TNG4131	SINGLE 3 INPUT NAND/NDR GATE EXPANDABLE	C	7	4.00	3.20	2.70
-TNG5031	DUAL 2 INPUT OR EXPANDER GATES	C	7	2.85	2.30	1.90
-TNG5131	SINGLE 2 INPUT NAND EXP FOR OR FUNCTION	C	7	3.55	2.80	2.40
-TFF3031	GATED 2 PHASE FLIP-FLOP	C	7	4.95	4.00	3.30
-TFF3131	MASTER SLAVE JK FLIP-FLOP	C	7	5.75	4.60	3.85
-TFF3231	CHARGE STORAGE JK FLIP-FLOP	C	7	5.75	4.60	3.85

THERMAL TIME DELAY RELAYS

	1-9	10-99	100-499
G SERIES (5 TO 60 SECONDS) G, GO, GC TYPES	6.85	5.40	4.50
H SERIES (5 TO 80 SECONDS) HA TYPES HB, HD TYPES	11.50 12.50	9.75 10.75	8.85 9.85
H SERIES (81 TO 180 SECONDS) HA TYPES HB, HD TYPES	13.75 14.75	11.75 12.75	10.60 11.60
K SERIES (3 TO 60 SECONDS) KO, KC TYPES	6.35	5.10	4.20
S SERIES (3 TO 60 SECONDS) SA TYPES SB, SD TYPES SC TYPES	12.50 13.50 13.00	10.75 11.75 11.00	9.75 10.75 10.15
DUAL SERIES (3 TO 180 SECONDS) CR TYPES	45.50	40.50	36.75
DUAL SERIES (10 TO 180 SECONDS) AR TYPES TR TYPES STR TYPES	42.50 84.50 127.00	37.50 79.50 110.50	33.75 76.50 99.50

† These circuits are supplied in short cap, short lead, 8 pin TO-5 package only.

MIXED QUANTITY PRICING:

Mixed quantity pricing shall apply on all integrated circuit gates in the same type package regardless of quantity, function, fan out or temperature range. Thus, on any one order, the price for individual types will be the price as shown in the quantity column in which the total order quantity would fall.

TEMPERATURE RANGE KEY: M - -55 to +125°C, I - 0 to +75°C, C - +15 to +55°C

ADDENDUM TO OEM PRICE LIST

HLTTL I.C. PRICE LIST

Add Types as follows:

				<u>1-24</u>	<u>25-99</u>	<u>100-999</u>
TNG3311P	Triple 3 input Nand/Nor Gate	M	15	22.95	18.40	15.30
TNG3311F	Triple 3 input Nand/Nor Gate	M	15	22.95	18.40	15.30
TNG3411P	Quad 2 input Nand/Nor Gate	M	15	25.85	20.70	17.25
TNG3411F	Quad 2 input Nand/Nor Gate	M	15	25.85	20.70	17.25
TMC3162P	16 Bit Memory Element	I	30	53.90	42.90	36.00
TMC3164P	16 Bit Memory Element	I	15	38.50	30.80	25.75

CORRECTION:

TMC3162F

\$49.00