

MASTER DRAWING LIST

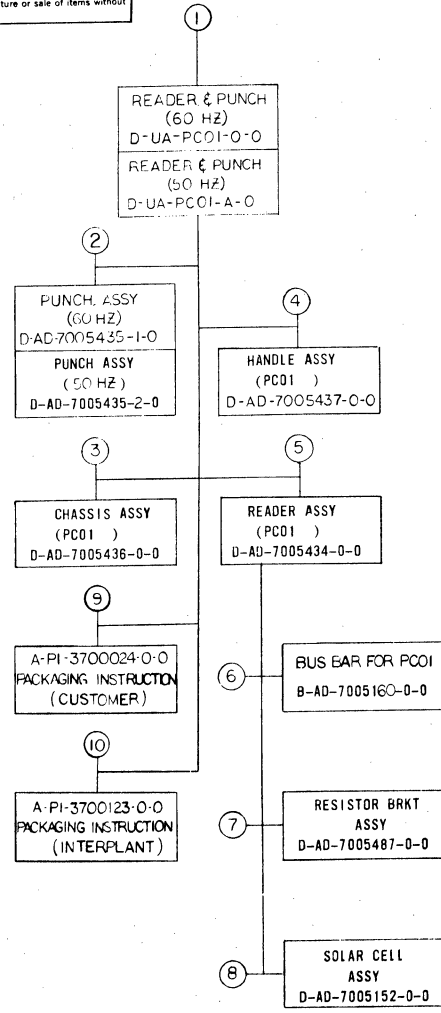
This drawing and specifications, herein, are the property of Digital Equipment Corporation and shall not be reproduced or copied in whole or in part as the basis for the manufacture or sale of items without written permission.

DWG. NO.	REV. LET.	NO. OF SHEETS	TITLE
D-UA-PC01-O-0	J	5	PC01 READER & PUNCH
A-PL-PC01-O-0	J	2	PC01 READ. & PUNCH (P.L.)
D-LO-PC01-O-5	B	1	PC01 READ LAYOUT
D-DI-PC01-O-7	J	2	DRAWING INDEX LIST (PC01)
A-AL-PC01-O-9		1	PAPER TAPE READER & PUNCH ACCESSORY LIST
C-OD-PC01-O-8	A	1	OUTLINE DWG PC01
B-AD-7005160-O-0	#	1	BUS BAR (PC01)
A-PL-7005160-O-0	#	1	BUS BAR (PC01)(PL)
D-BS-PC01-O-6	D		PC01 READ & PUNCH
B-MU-7005434-O-1	#	1	MOD UTILIZATION LIST (PC01)
A-MDL-75E-0	#	1	PERF TAPE PUNCH & CONT TYPE 75E
A-MDL-750C-0	#	1	PERF TAPE READ TYPE 750C

REVISIONS				DRN.	DATE	DIGITAL EQUIPMENT CORPORATION MAYNARD, MASSACHUSETTS
REV.	DATE	CHG. NO.	APP'D.	R. BERNIER	15/67	
A	3/21/68	3385	W.V.	CHK'D.	5/6/67	TITLE PC01, READER & PUNCH (60 HZ)
B, C, D	5-13-68	3505	<i>D.V.</i>	ENG.	5/6/67	
E	8/14/68	3456	<i>D.V.</i>	PROJ. ENG.		
F	11/68	00003	<i>G.B.</i>	PROJ. ENG.	6/13/67	
H	3/69	00007	<i>G.B.</i>	PROD.		
J	10/69	PC04-12	<i>M.A.</i>			
K	3/70	Misc. 64	<i>J.L.</i>			
L	2/71	00011				
M	5/74	PC01-00012	<i>J.R.B.</i>			
				FIRST USED ON		
				SCALE		
				SHEET 1 OF 1		
				SIZE CODE	NUMBER	
				A ML	PC01-O	M
				DIST.		

DEC FORM NO. DPA 103

This drawing and specifications herein are the property of Digital Equipment Corporation and shall not be reproduced or copied or used in whole or in part as the basis for the manufacture or sale of items without written permission.



FIND NO.	DESCRIPTION	PART NO.	DEPT USAGE			FIND NO.	DESCRIPTION	PART NO.	DEPT USAGE		
			MECHANICAL	ELECTRICAL	PROD				CUST	F/C	MECHANICAL
1	PC01 READER & PUNCH (60 HZ) PC01 READER & PUNCH (50 HZ) PC01 READER & PUNCH (PL) COVER FRONT (19 1/2 IN PANEL) COVER FRONT (19 IN PANEL) CHAD BOX TAPE CONTAINER (PC01) FASTENER BAR (HANDLE) #033 TO #033 CABLE OUTLINE DWG PC01 PACKING INST. PC01 READER & PUNCH	D-UA-PC01-0-0 D-UA-PC01-A-0 A-PL-PC01-0-0 D-MD-7405427-1-0 D-MD-7405427-2-0 C-MD-7405300-0-0 D-MD-7405236-0-0 A-MD-7405292-0-0 C-1A-7405553-8-0 C-0D-PC01-0-8 A-PI-3700024-0-0				1	PC01 READER & PUNCH 50 HZ PC01 READER & PUNCH 60 HZ BUS BAR (PC01) ACCESSORY LIST MODULE UTILIZATION LIST PERF. TAPE PUNCH & CONT 75E PERF. READ TYPE 750C PC01 BLOCK SCHEMATIC	A-ML-PC01-A A-ML-PC01-G B-AD-7005160-0-0 A-AL-PC01-0-9 B-MU-7005434-0-1 A-ML-75E-0 A-ML-750C-0 D-BS-PC01-0-6			
2	PUNCH ASSY (60 HZ) PUNCH ASSY (50 HZ) PUNCH ASSY (PC01) (P.L.) CHAD TUBE TAPE FEED CHUTE KNOB, PUNCH PLUG & TAPE GUIDE BRKT PUNCH MTG BRKT SCOTCHCAIS PULLEY (60 CYCLES) PULLEY (50 CYCLES) CHAD TUBE CONT BELOW	D-AD-7005435-1-0 D-AD-7005435-2-0 A-PL-7005435-0-0 B-MD-7405305-0-0 D-1A-7405305-0-0 B-MD-7405302-0-0 C-MD-7405949-0-0 D-1A-7405762-0-0 A-SS-7406054-0-0 B-MD-7406089-1-0 B-MD-7406089-2-0				2	PUNCH, CIRCUIT SCHEMATIC	D-AD-7005435-0-0			
3	CHASSIS ASSY (PC01) CHASSIS ASSY (PC01) (P.L.) RET TAPE BOX (CHASSIS) PANEL REAR (CHASSIS) FAN SCREEN BRKT, FAN (CHASSIS) CHASSIS PANEL, FRONT (CHASSIS) TOP MTG BAR (COVER) BOTTOM MTG BAR (COVER)	D-AD-7005436-0-0 A-PL-7005436-0-0 C-MD-7405208-0-0 D-MD-7405118-0-0 C-MD-7404881-0-0 D-MD-7405138-0-0 D-1A-7405943-0-0 D-MD-7405942-0-0 B-MD-7405228-0-0 B-MD-7405268-0-0				3	CHASSIS CIRCUIT SCHEMATIC	U-AD-7005436-0-0			
4	HANDLE ASSY (PC01) HANDLE ASSY (PC01) (P.L.) HANDLE SWITCH ENCLOSURE	D-AD-7005437-0-0 A-PL-7005437-0-0 D-MD-7405209-0-0 C-MD-7405207-0-0				4					
5	READER ASSY (PC01) READER ASSY (P.L.) TAPE PATH GUIDE TAPE SPRCKET (READER) SPRING MTG (READER) SOLAR CELL MOUNTING READER PLATE (READER) TOP TAPE HOLD DOWN (READER) HOLD DOWN SPRING MTG BRKT, LIGHT & SWITCH ALIGNMENT GAUGE CABLE, CONN TO MOTOR PC01 READER LAYOUT	D-AD-7005434-0-0 A-PL-7005434-0-0 D-1A-7405944-0-0 C-MD-3404748-0-0 A-MD-7405274-0-0 B-MD-7405945-0-0 D-MD-7405941-0-0 D-MD-7405257-0-0 A-MD-7405128-0-0 D-MD-7405132-0-0 B-MD-9805026-0-0 C-1A-7406088-0-0 D-10-PC01-0-5				5					
6	BUS BAR FOR PC01 BUS BAR FOR PC01 (P.L.) CONN BLOCK ASSY	B-AD-7005160-0-0 A-PL-7005160-0-0 B-AD-7405159-0-0				6					
7	RESISTOR BRACKET ASSY RESISTOR BRKT (P.L.) RESISTOR BRKT	D-AD-7005487-0-0 A-PL-7005487-0-0 D-MD-7408065-0-0				7					
8	SOLAR CELL ASSY SOLAR CELL ASSY (P.L.)	D-AD-7005152-0-0 A-PL-7005152-0-0				8					
2	CONT TAPE FEED CHUTE SOCKET SUPPORT	C-MD-7406313-0-0 A-MD-7406446-0-0				2					

QTY.	DESCRIPTION	PART NO.	ITEM NO.
9.	PACKAGING INSTRUCTIONS OUTER SHIPPING CARTON INNER SHIPPING CARTON BOTTOM PAD FRONT SPACER SIDE SPACER REAR SUPPORT TOP SPACER TORO PAD POLY BAG	A-PI-370024-0-0 A-PS-9905046-0-0 A-PS-9905047-0-0 A-PS-9905053-0-0 A-PS-9905054-0-0 A-PS-9905055-0-0 A-PS-9905052-0-0 A-PS-9905056-0-0 A-PS-9905044-1-0 A-PS-990529-7-0	
10	PACKAGING INSTRUCTION TAPELESS CARTON SPECIAL DIE CUT ONE PIECE FOLDER QUAD MODULE PACK POLY BAG	A-PI-3700123-0-0 A-PS-9905346-0-0 A-PS-9905348-0-0 A-PS-9905349-0-0 A-PS-9905072-0-0 A-PS-9905129-7-0	

REV.	CHG.	NO.	DATE	BY	DESCRIPTION
1	A	3248	1/15/68	W. Williams	ADDED CHAD TUBE TO FIND NO 2
2	B	3503	1/15/68	W. Williams	DELETED DWG FROM FIND # 2
3	C	3505	1/15/68	W. Williams	UPDATED TO CORRECT MODEL NO & PART NOS
4	D	3456	1/15/68	W. Williams	ADD 50-60 HZ VARIATION TO MECH FIND NO'S 1, 2 & ELEC FIND NO. 1
5	E	00007	1/15/68	W. Williams	PC01-00007
6	F	00066	1/15/68	W. Williams	MISC-00066
7	G	00011	1/15/68	W. Williams	PC01-00011
8	H	00002	1/15/68	W. Williams	PC01-00002
9	J	00007	1/15/68	W. Williams	PC01-00007

UNLESS OTHERWISE SPECIFIED	DRN: <i>W. Williams</i>	DATE: <i>1/15/68</i>
UNLESS OTHERWISE SPECIFIED DIMENSION IN INCHES	CHK'D: <i>W. Williams</i>	DATE: <i>1/15/68</i>
TOLERANCES	ENG: <i>W. Williams</i>	DATE: <i>1/15/68</i>
DECIMALS ± .008	PROJ. ENG: <i>W. Williams</i>	DATE: <i>1/15/68</i>
FRACTIONS ± 1/64	PROD: <i>W. Williams</i>	DATE: <i>1/15/68</i>
ANGLES ± 0°30'		
FINAL SURFACE QUALITY REMOVE BURRS AND BREAK SHARP CORNERS		
MATERIAL: <i>++</i>	FIRST USED ON: D-UA-PC01-0-0	
FINISH: <i>++</i>	SCALE: <i>1 OF 1</i>	

ASSY NO D-UA-PC01-0-0

DIGITAL EQUIPMENT CORPORATION
MAINTAINING MANUFACTURING

TITLE: DRAWING INDEX LIST PC01

SIZE CODE: D | NUMBER: PC01-0-7 | REV: J

DIGITAL EQUIPMENT CORPORATION
MAYNARD, MASSACHUSETTS

PARTS LIST

ITEM NO	DWG. NO.	DESCRIPTION	QUANTITY					REVISIONS			
			PC01-0 (60 HZ)	PC01-A (50 HZ)	PC01-0 (60 HZ) (UNIT #PC04-1 AND HIGHER)	PC01-A (50 HZ) (UNIT #PC04-1 AND HIGHER)	PC01-0 (60 HZ) (UNIT #PC04-1 AND HIGHER)	CHANGE NO.	DATE	ENG.	
1	STOCK #9006022-1	SCR PHL PAN HD #6-32 x 3/8 SST.	8	8	0	0	0	E-3456 5/10 REDRAWN 68 TO INCL 5p-60HZ VARIATION ADD ITEM #21 CHG ITEM #5 DWG NO			
2	D-MD-7405427-1-0	COVER/CUTOUT (19 1/2" PANEL)	1	1	0	0	0	F-PC01-00003 CHG ASSY 1/1/68			
3	D-MD-7405427-2-0	COVER/CUTOUT (19" PANEL)	1	1	0	0	0	H-PC04-00012 10/29/68 J PC01-00012 5/74			
4	STOCK #9006508	POP RIVET 1/8 DIA AD45BS USMC	2	2	0	0	0				
5	D-AD-7005435-1-0	PUNCH ASSY (60 HZ)	1								
6	STOCK #9006997	CONN #42025-1 AMP INC	A/R/R	R	0	0	0				
7	STOCK #9107305	#14 x 1/2 LG HY SHRINK TUBING (RED)	A/R/R	R	0	0	0				
8	C-MD-7405390-0-0	CHAD BOX	1	1	0	0	0				
9	D-MD-7405236-0-0	TAPE CONTAINER (PC01)	1	1	0	0	0				
10	D-AD-7005436-0-0	CHASSIS ASSY (PC01)	1	1	0	0	0				
11	D-AD-7005437-0-0	HANDLE ASSY (PC01)	1	1	0	0	0				
12	9006039-1	SCR PHL PAN HD 8-32 x 1/2 SST	2	2	0	0	0				
13	9006708	WASH, #8 NYLON	2	2	0	0	0				
14	A-MD-7405292-0-0	PASTER BAR (HANDLE)	1	1	0	0	0				
MADE BY R. BERNIER CHECKED D. HEALY ENG K. E. FITZGERALD			TITLE PC01 READER & PUNCH FOR					DRWG. NO. A-PL-PC01-0-0 ASSY NO D-UA-PC01-0-0 SHEET 1 OF 2			REV. LTR. J

DIGITAL EQUIPMENT CORPORATION
MAYNARD, MASSACHUSETTS

PARTS LIST

ITEM NO	DWG. NO.	DESCRIPTION	QUANTITY					REVISIONS			
			PC01-0 (60 HZ)	PC01-A (50 HZ)	PC01-0 (60 HZ) (UNIT #PC04-1 AND HIGHER)	PC01-A (50 HZ) (UNIT #PC04-1 AND HIGHER)	PC01-0 (60 HZ) (UNIT #PC04-1 AND HIGHER)	CHANGE NO.	DATE	ENG.	
15	STOCK #9006633	WASH INT TOOTH #6 SST	8	8	0	0	0				
16	STOCK #9006550	NUT, KEPS 6-32 SST	1	1	0	0	0				
17	STOCK #9006029-1	SCR PHL PAN HD #6-32 x 1 1/4 SST.	1	1	0	0	0				
18	D-AD-7005434-0-0	READER ASSY (PC01)	1	1	0	0	0				
19	C-IA-7405553-2-0	W033 TO W033 CABLE	2	2	0	0	0				
20	STOCK #9007032	TIE WRAP SST-2-B PANDUIT	A/R/R	R	0	0	0				
21	D-AD-7005435-2-0	PUNCH ASSY (50 HZ)	1								
22	D-UA-PC04-B-0	PC04-B PAPER TAPE UNIT (60 HZ)	0	0	1	0	0				
23	D-UA-PC04-E-A-0	PC04-EA PAPER TAPE UNIT (50 HZ)	0	0	0	1	0				
24	A-PI-3700024-0-0	PACKAGING INSTRUCTION (CUST)	1	1	0	0	0				
25	A-PI-3700123-0-0	PACKAGING INSTRUCTION (INTERPLANT)	1	1	0	0	0				
MADE BY R. BERNIER CHECKED D. HEALY ENG K. E. FITZGERALD			TITLE PC01 READER & PUNCH FOR					DRWG. NO. A-PL-PC01-0-0 ASSY NO D-UA-PC01-0-0 SHEET 2 OF 2			REV. LTR. J

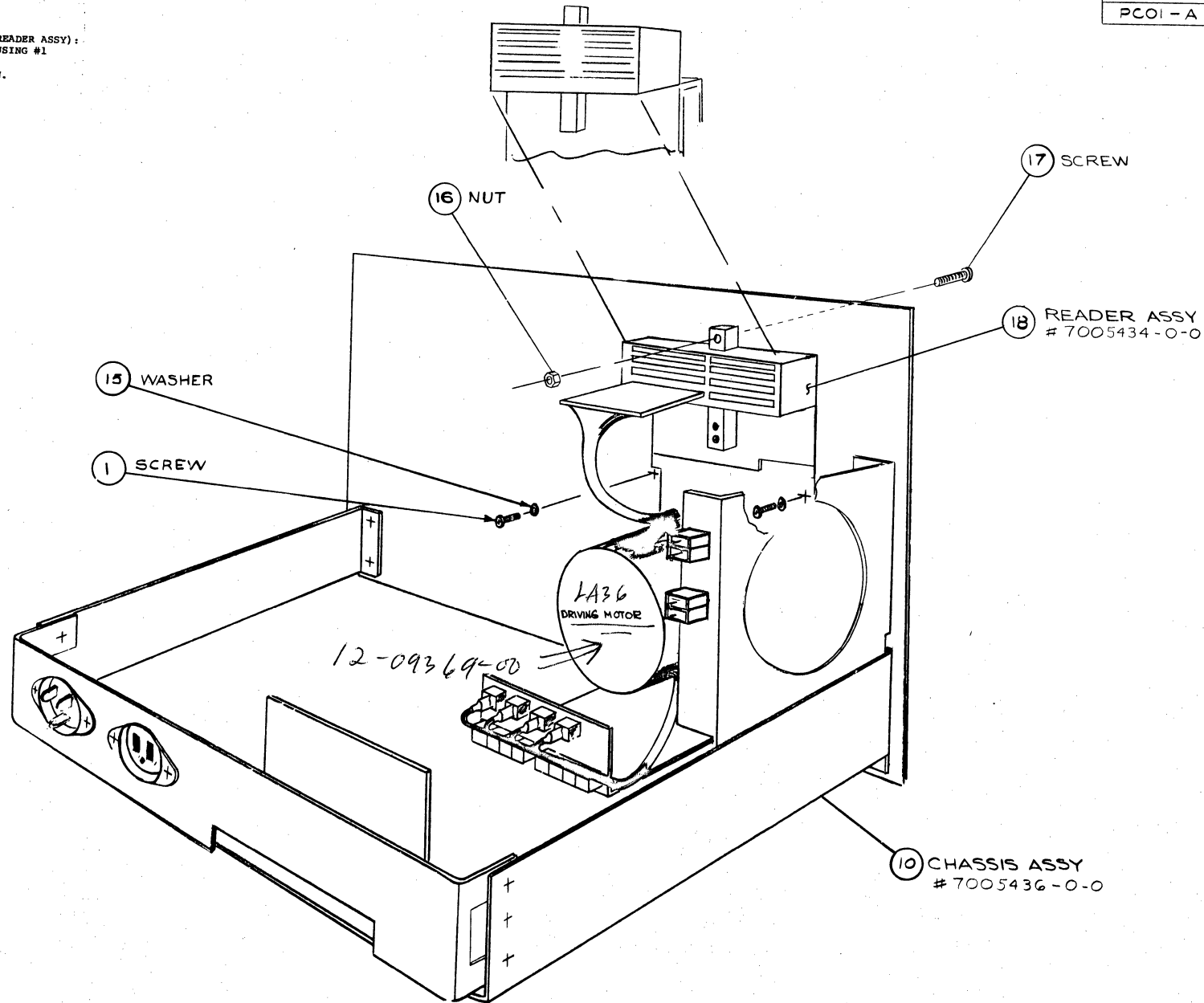
This drawing and specifications, herein, are the property of Digital Equipment Corporation and shall not be reproduced or copied or used in whole or in part as the basis for the manufacture or sale of items without written permission.

READER ASSY

STEP 1: DISCONNECT RESISTOR BRKT FROM EXISTING #18 (READER ASSY);
 INSTALL READER ASSY INTO #10 (CHASSIS ASSY) USING #1 (SCREW) #15 (WASHER) #17 (SCREW) & #16 (NUT).
 REATTACH RESISTOR BRKT. TO ORIGINAL POSITION.

LEGEND	
NUMBER	VARIATION
PCOI-0	60 HZ
PCOI-A	50 HZ

NOTES:
 1. FOR DRAWING INDEX LIST SEE
 D-DI-PCOI-0-7



REV.	CHG	BY	DATE
A	ECO # 3385
B	ECO # 3505
C	ECO # 3456
D	ECO # 3564
E	ECO # 3564
F	ECO # 3564

QTY.	DESCRIPTION	PART NO.	ITEM NO.
PARTS LIST			
DIGITAL EQUIPMENT CORPORATION MAYNARD, MASSACHUSETTS			
TITLE: (PCOI) READER & PUNCH			
SCALE: NONE		SIZE/CODE: DUA	NUMBER: PCOI-0-0
SHEET: 5		REV. J	

REV. J
NUMBER
DUA PCOI-0-0

This drawing and specifications, herein, are the property of Digital Equipment Corporation and shall not be reproduced or copied or used in whole or in part as the basis for the manufacture or sale of items without written permission.

TAPE CNTR & PUNCH ASSY

- STEP 1: SECURE #9 (TAPE CONT) TO #10 (CHASSIS ASSY) USING #4 (POP RIVETS)
- STEP 2: SECURE PUNCH ASSY (#5 OR #2) TO #10 (CHASSIS ASSY) USING #1 SCREW & #15 WASHER.
- STEP 3: LOCATE ITEM NO.8 (CHAD BOX) IN CHAD BOX HOLDER AS NOTED.

50 HZ (2) PUNCH ASSY, #7005435-2-0
 60 HZ (5) PUNCH ASSY #7005435-1-0

CHAD BOX HOLDER

WASHER (15)

SCREW (1)

(8) CHAD BOX #7405300-0-0

(9) TAPE CNTR #7405236-0-0

(10) CHASSIS ASSY #7005436-0-0

(4) POP RIVET

HANDLE ASS'Y

STEP 1: SECURE #11 (HANDLE ASSY) TO #10 (CHASSIS ASSY) USING #12 (SCREW) #13 (WASHER) & #14 (FASTENER BAR)

NOTES:

1. IF 19 1/2 FRONT IS REQD MOVE HANDLE ASS'Y TO RIGHT WHEN MTG SO IT MEASURES 19 1/4 FROM LEFT END OF FRONT PANEL.

FRONT PANEL LEFT END

(12) SCREW

(13) WASHER

(14) FASTENER BAR #7405292-0-0

(10) CHASSIS ASSY #7005436-0-0

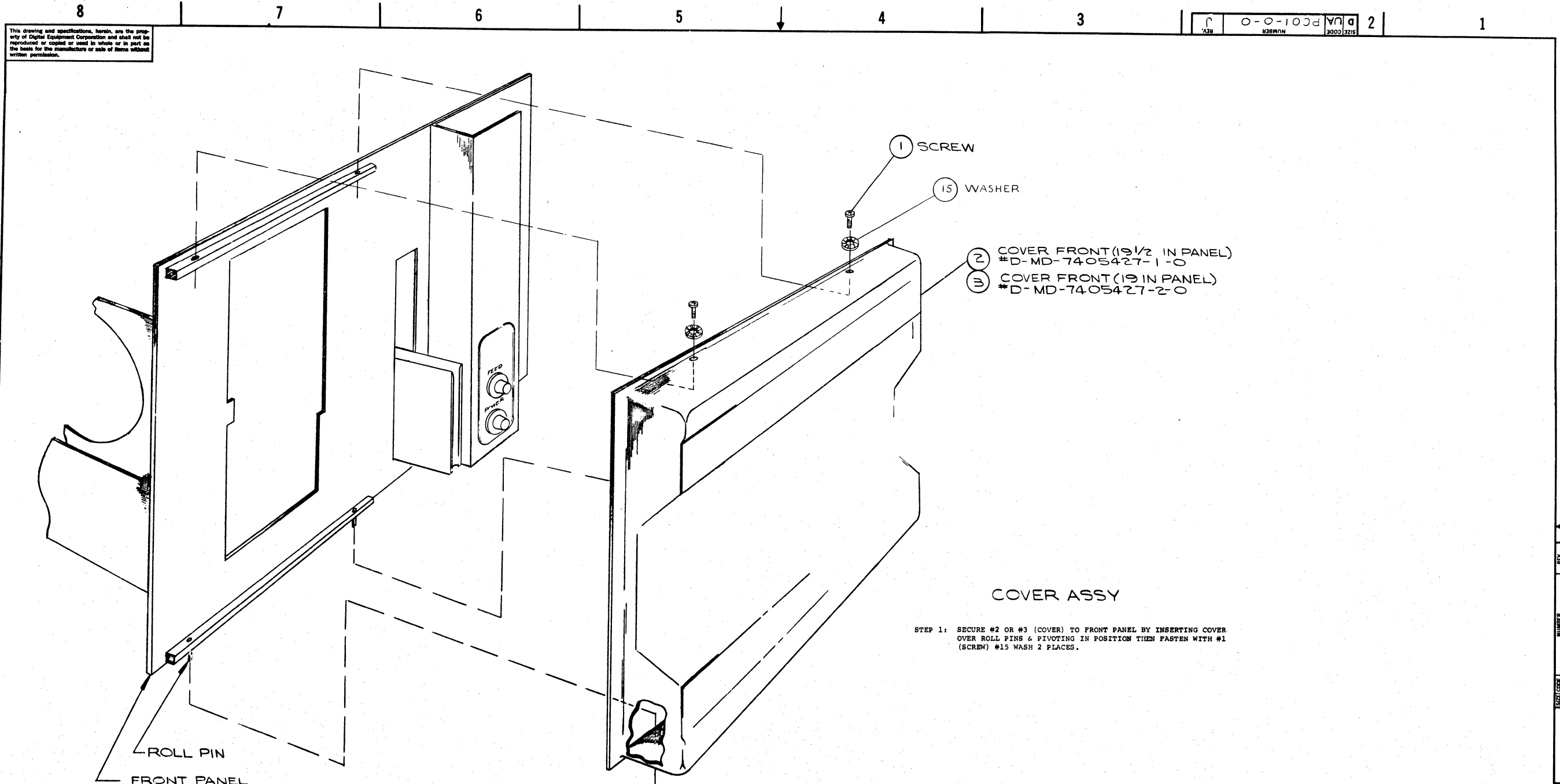
(11) HANDLE ASSY #7005437-0-0

REV. 1
 CHG. 1
 DATE 11/67

UNLESS OTHERWISE SPECIFIED
 DIMENSION IN INCHES
 TOLERANCES
 DECIMALS FRACTIONS ANGLES
 ±.005 ± 1/64 ± 0°30'
 FINISH SURFACE QUALITY
 REMOVE BURRS AND BREAK SHARP EDGES

QTY.	DESCRIPTION	PART NO.	ITEM NO.
PARTS LIST			
DIGITAL EQUIPMENT CORPORATION MAYTAG, MASSACHUSETTS			
TITLE (PCOI) READER & PUNCH			
SCALE NONE		SIZE/CODE DUA	NUMBER PCOI-0-0
SHEET 2 OF 5		DIST. G	REV. J

This drawing and specifications, herein, are the property of Digital Equipment Corporation and shall not be reproduced or copied or used in whole or in part as the basis for the manufacture or sale of items without written permission.



COVER ASSY

STEP 1: SECURE #2 OR #3 (COVER) TO FRONT PANEL BY INSERTING COVER OVER ROLL PINS & PIVOTING IN POSITION THEN FASTEN WITH #1 (SCREW) #15 WASH 2 PLACES.

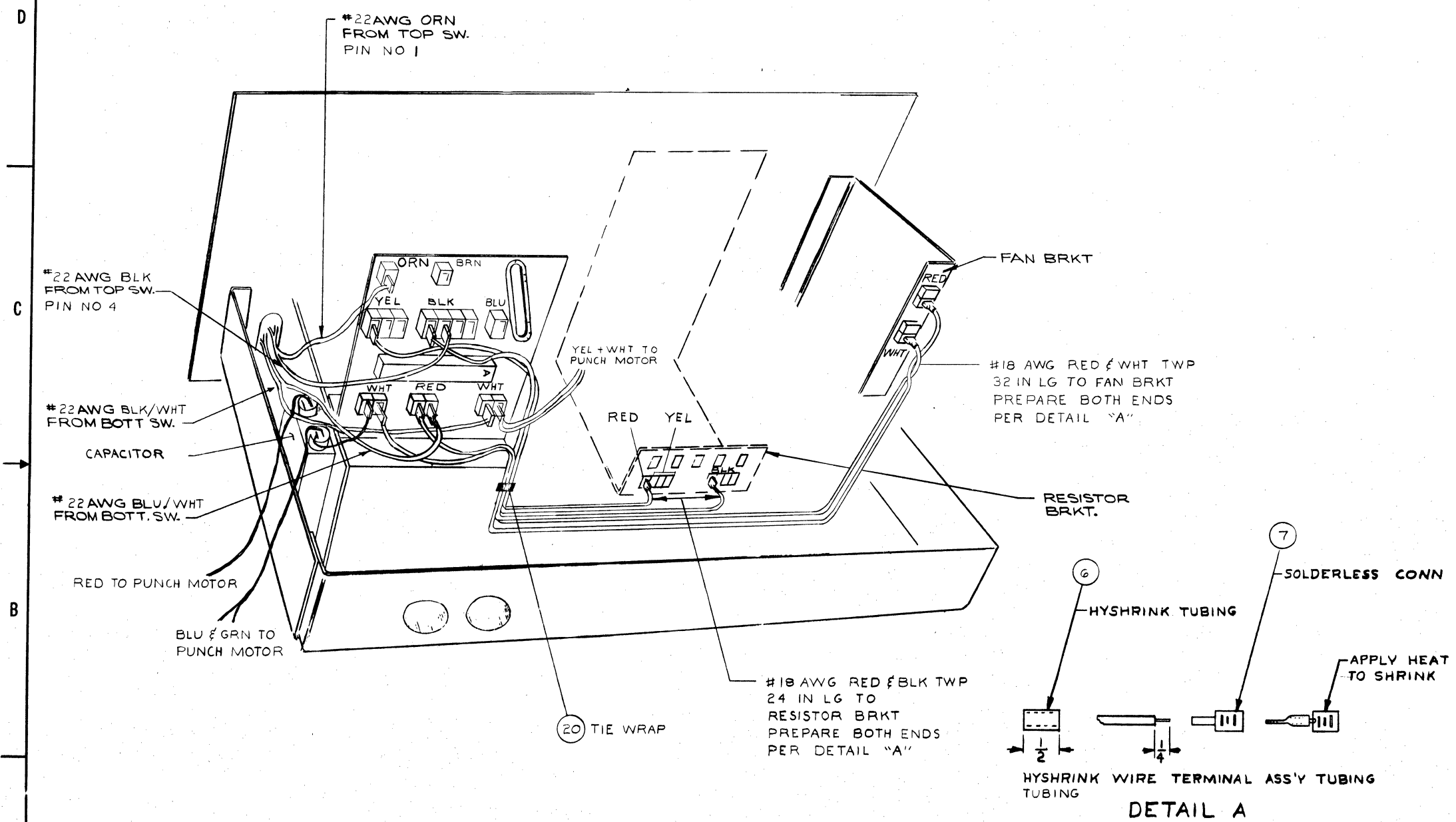
QTY.	DESCRIPTION	PART NO.	ITEM NO.
PARTS LIST			
UNLESS OTHERWISE SPECIFIED		DRN. <i>R.C. Okamoto</i>	DATE 11/21/67
UNLESS OTHERWISE SPECIFIED		CHK'D. <i>W. Kelly</i>	DATE 6/15/67
DIMENSION IN INCHES		ENGR. <i>R.C. Okamoto</i>	DATE 6-1-67
TOLERANCES		PRG. ENGR. <i>R.C. Okamoto</i>	DATE 6-1-67
DECIMALS FRACTIONS ANGLES		PROJ. <i>R.C. Okamoto</i>	DATE 6-1-67
± .008 ± 1/64 ± 0°30'		FINISH <i>R.C. Okamoto</i>	DATE 6-1-67
FINAL SURFACE QUALITY		FIRST USED ON	
REMOVE BURRS AND BREAK SHARP CORNERS			
MATERIAL			
FINISH			
SCALE NONE		SHEET 3 OF 5	
DIST. G			
TITLE		DIGITAL EQUIPMENT CORPORATION MAYFELD, MASSACHUSETTS	
TITLE		(PC01) READER & PUNCH	
SIZE CODE		NUMBER	REV.
D UA		PC01-0-0	J

REV. J
CHANGE NO. 318

REV. J
NUMBER PC01-0-0

This drawing and specifications, herein, are the property of Digital Equipment Corporation and shall not be reproduced or copied or used in whole or in part as the basis for the manufacture or sale of items without written permission.

REV. J
 0-0-0-0
 1000 1216



QTY.	DESCRIPTION	PART NO.	ITEM NO.
PARTS LIST			
UNLESS OTHERWISE SPECIFIED		DRN	DATE
DIMENSION IN INCHES		<i>R. J. Ramer</i>	4/17/67
TOLERANCES		CHKD	DATE
DECIMALS FRACTIONS ANGLES		<i>R. J. Ramer</i>	6/12/67
±.008 ± 1/64 ± 0°30'		ENR	DATE
FINISH SURFACE QUALITY		<i>R. J. Ramer</i>	6/15/67
REMOVE BURRS AND BREAK SHARP CORNERS		PLN	DATE
		<i>R. J. Ramer</i>	6/16/67
MATERIAL		FIRST USED ON	
FINISH		SCALE	NONE
		SHEET	4 OF 5
		TITLE	(PCOI) READER & PUNCH
		SIZE CODE	D U A
		NUMBER	PCOI-0-0
		REV.	J
		DIST.	C

REV.	CHANGE NO.

FORM NO. 100 (REVISION 103 PLAIN)

This drawing and specifications, herein, are the property of Digital Equipment Corporation and shall not be reproduced or copied or used in whole or in part as the basis for the manufacture or sale of items without written permission.

NOTES:

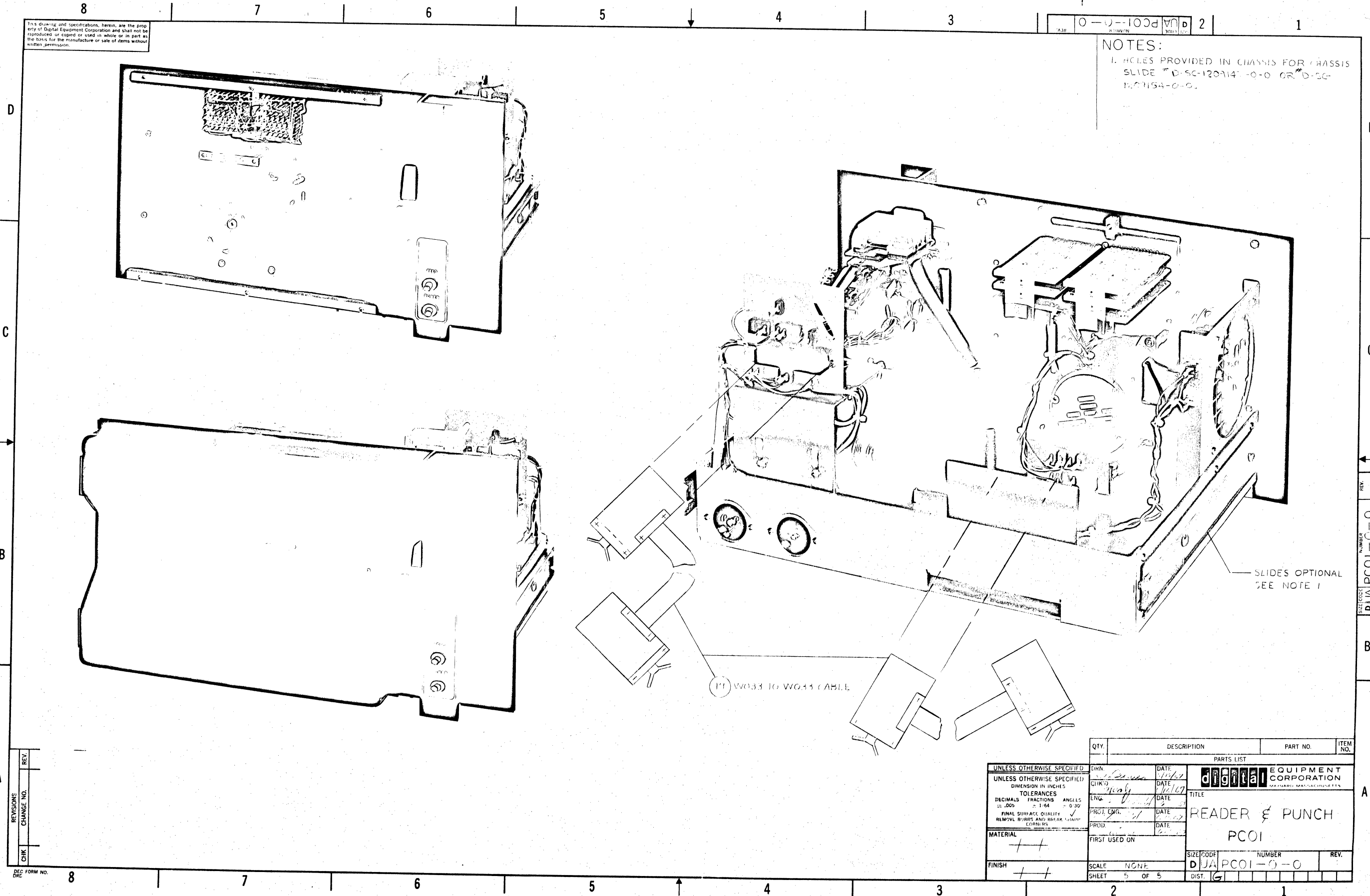
1. HOLES PROVIDED IN CHASSIS FOR CHASSIS SLIDE # D-SC-120-147-0-0 GR. D-SC-120-154-0-0.

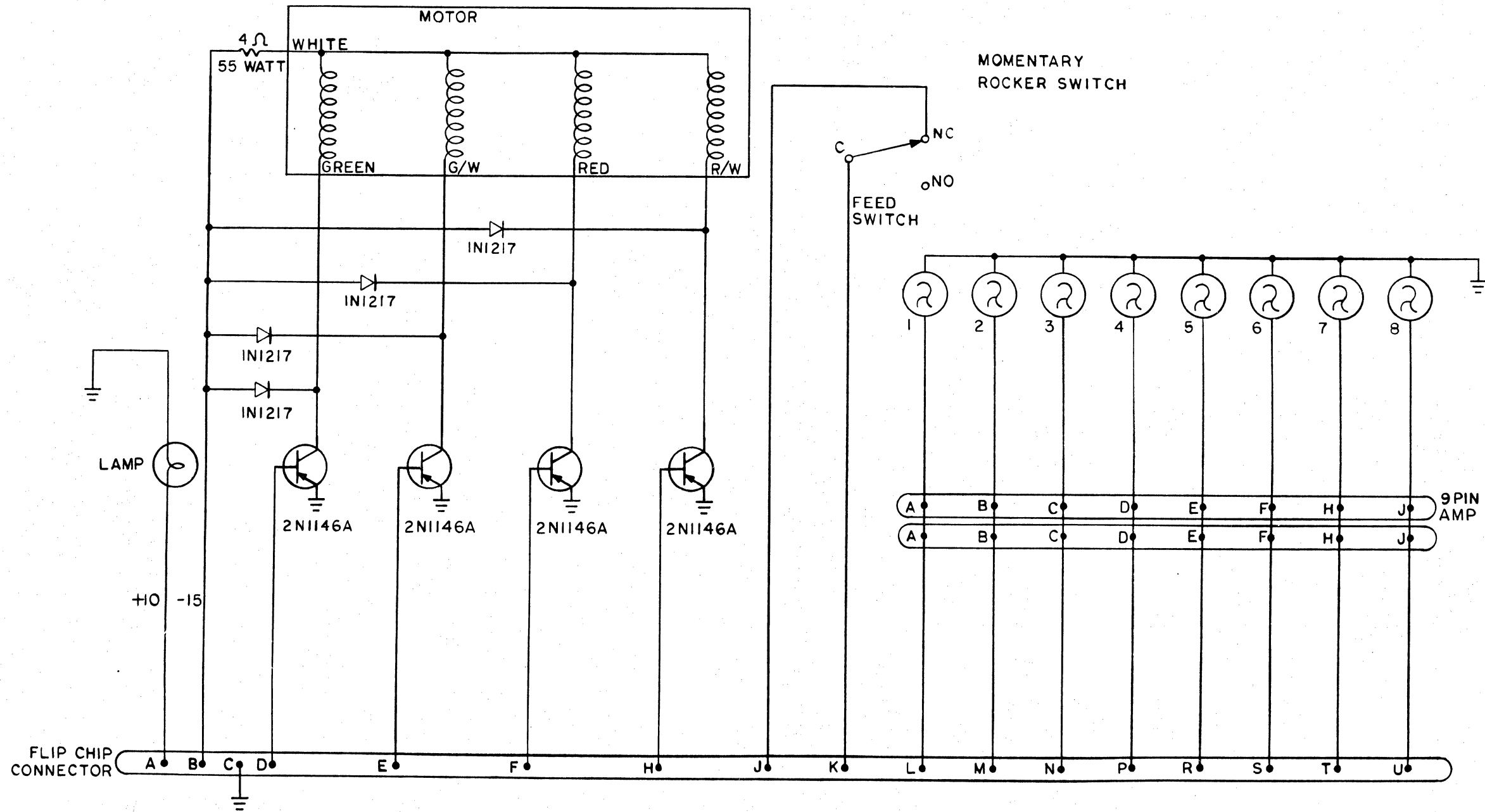
SLIDES OPTIONAL SEE NOTE 1

W033 TO W033 CABLE

QTY.	DESCRIPTION	PART NO.	ITEM NO.
PARTS LIST			
UNLESS OTHERWISE SPECIFIED		DRN	DATE
DIMENSION IN INCHES		CHK'D	DATE
TOLERANCES		ENG.	DATE
DECIMALS	FRACTIONS	ANGLES	
.005	1/64	0.30	
FINAL SURFACE QUALITY		PROT. ENG.	DATE
REMOVAL BURRS AND BREAK CORNERS		PROD.	DATE
MATERIAL		FIRST USED ON	
FINISH		SCALE NONE	
		SHEET 5 OF 5	
		SIZE CODE NUMBER REV.	
		DJA PCOI-0-0	
		DIST. G	

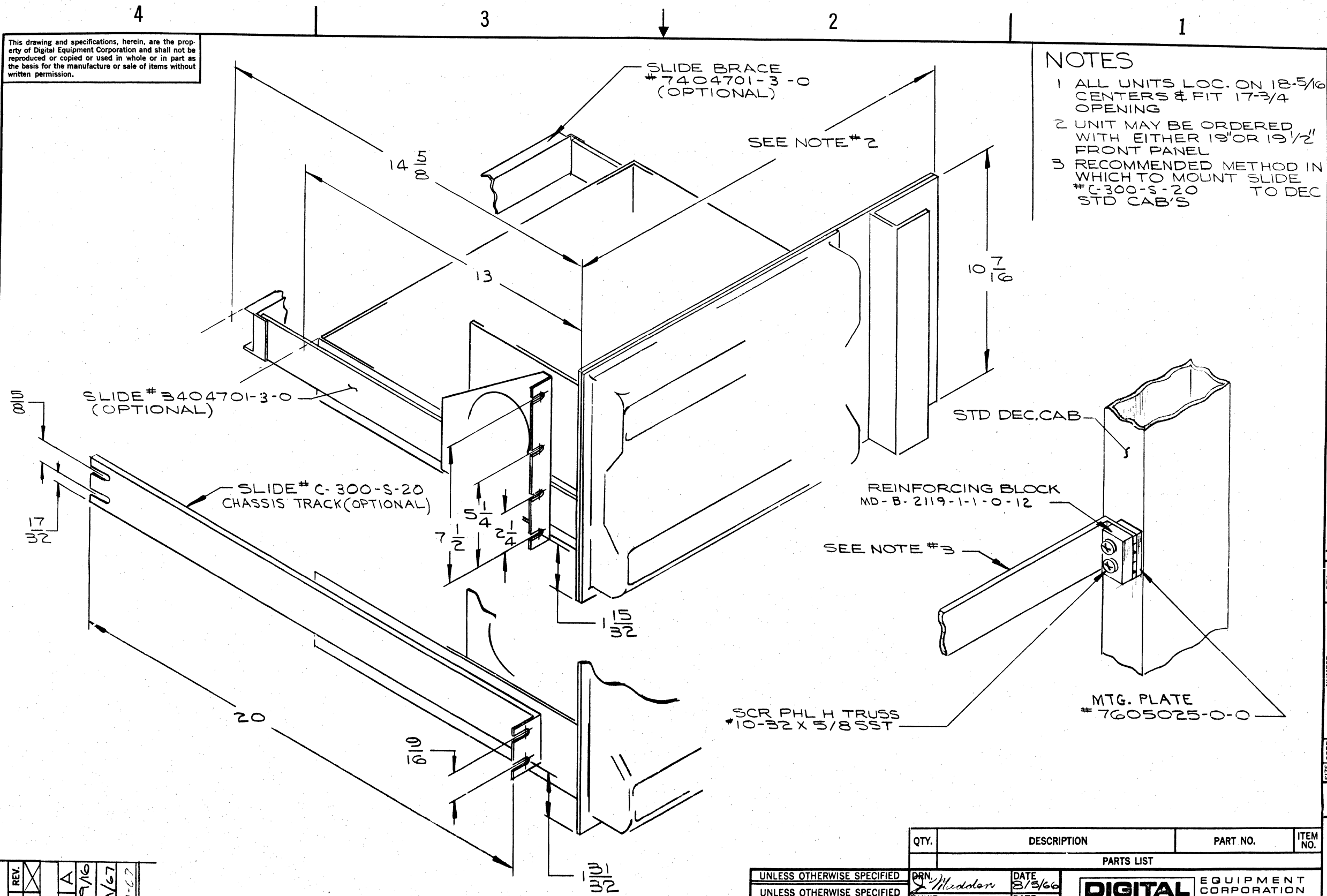
digital EQUIPMENT CORPORATION
 TITLE
 READER & PUNCH
 PCOI





REVISIONS	REVISIONS	DRAWN E. FANCY	DATE 7-15-65	 EQUIPMENT CORPORATION MAYNARD, MASSACHUSETTS	TITLE COMPONENT PLATE	
		CHECKED <i>J. Grubert</i>	DATE 8-25-65		FOR	
		ENG <i>J. Grubert</i>	DATE 8-25-65	ASSY NO.	CODE CS	DRWG NO C-PCOI-0-2
		PROJ ENG <i>J. Grubert</i>	DATE 5/25/65	SCALE	CHEET	GF
	ENG <i>J. Grubert</i>	DATE 5/20/65			REV LTR	

This drawing and specifications, herein, are the property of Digital Equipment Corporation and shall not be reproduced or copied or used in whole or in part as the basis for the manufacture or sale of items without written permission.



NOTES

- 1 ALL UNITS LOC. ON 18-5/16 CENTERS & FIT 17-3/4 OPENING
- 2 UNIT MAY BE ORDERED WITH EITHER 19" OR 19 1/2" FRONT PANEL
- 3 RECOMMENDED METHOD IN WHICH TO MOUNT SLIDE #C-300-S-20 TO DEC STD CAB'S

REVISIONS	
CHG	REV.
ECO #2864	X
ORIGINATED	
ECO #2971	A
1-31/32 WAS 1-9/16	
J. Madden 5/19/67	
J. Madden 8-2-67	

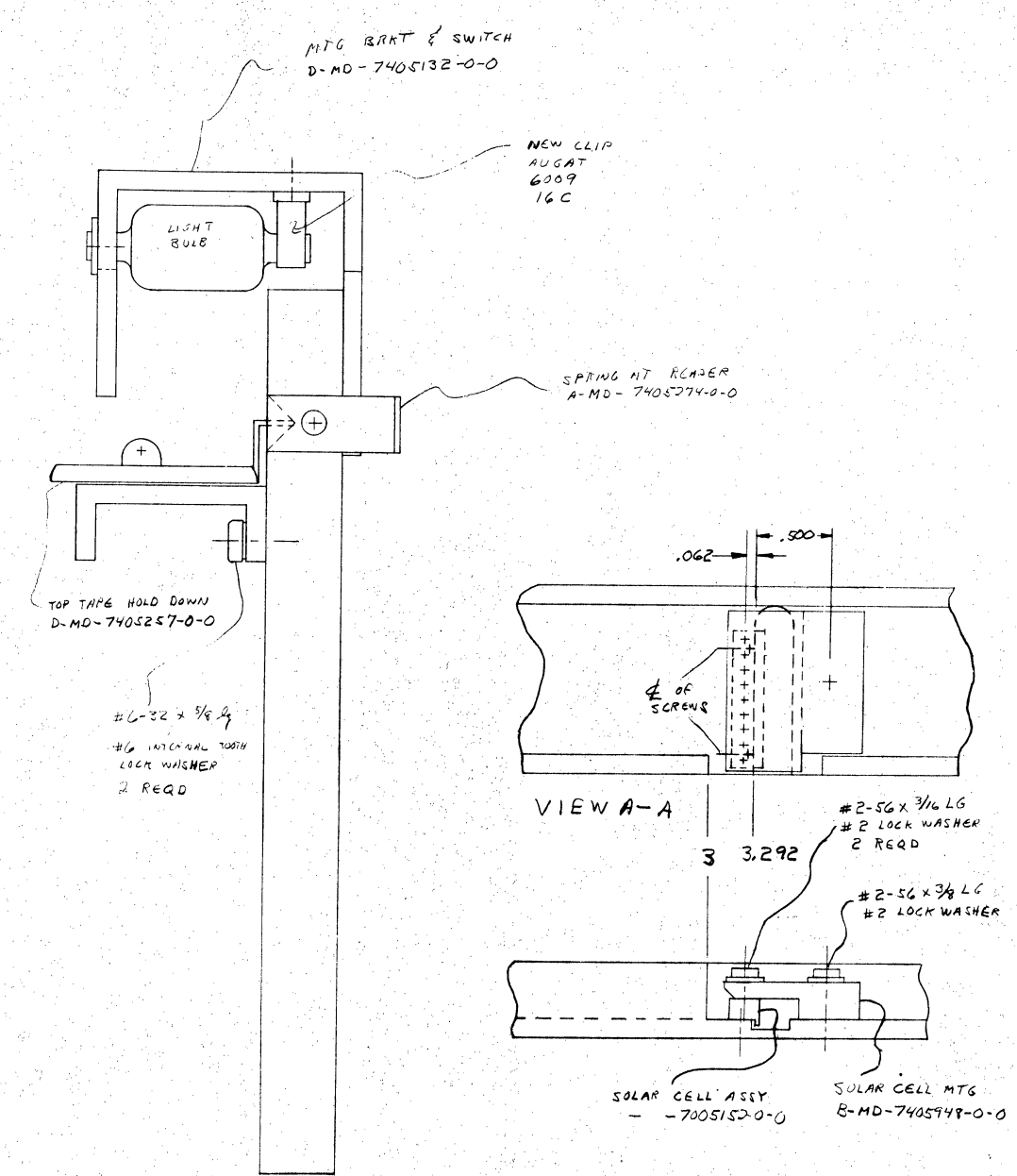
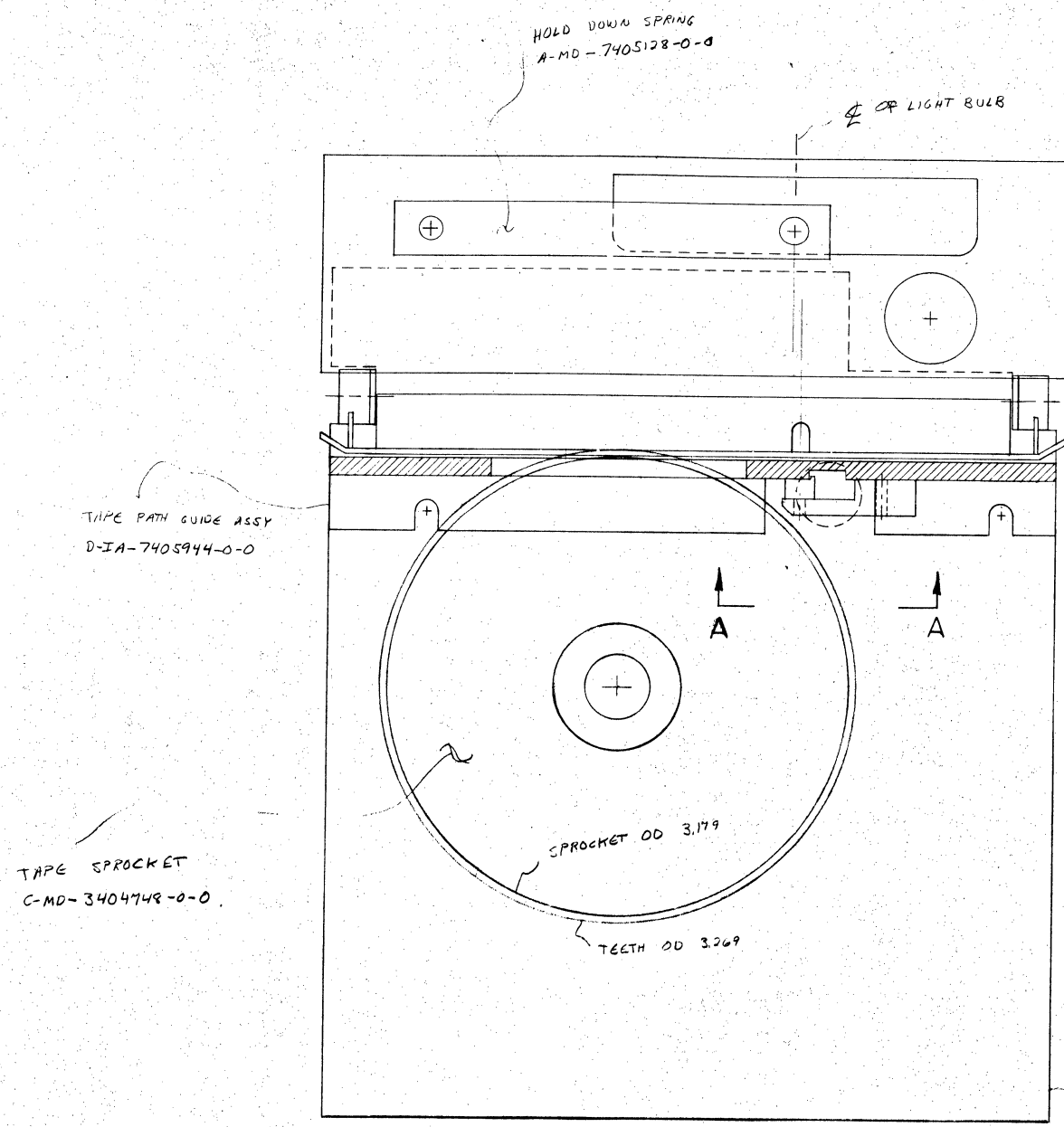
UNLESS OTHERWISE SPECIFIED		PRN. <i>J. Madden</i>	DATE 3/5/66
UNLESS OTHERWISE SPECIFIED		CHK'D. <i>R. J. Moore</i>	DATE 3-13-67
DIMENSION IN INCHES		ENG. <i>R. J. Moore</i>	DATE 3-15-67
TOLERANCES		PROJ. ENG. <i>R. J. Moore</i>	DATE 3-15-67
DECIMALS ± .005	FRACTIONS ± 1/64	PROD. <i>R. J. Moore</i>	DATE 3-15-67
ANGLES ± 0°30'		FIRST USED ON	
FINAL SURFACE QUALITY REMOVE BURRS AND BREAK SHARP CORNERS		SCALE NONE	
MATERIAL		SHEET 1 OF 1	
FINISH		DIST.	

QTY.	DESCRIPTION	PART NO.	ITEM NO.
PARTS LIST			
DIGITAL		EQUIPMENT CORPORATION MAYNARD, MASSACHUSETTS	
TITLE			
OUTLINE DWG (PCOI)			
SIZE CODE	NUMBER	REV.	
COD	PCOI-0-4	A	

REV. A
NUMBER PCOI-0-4
SIZE CODE COD
B

This drawing and specifications, herein, are the property of Digital Equipment Corporation and shall not be reproduced or copied or used in whole or in part as the basis for the manufacture or sale of items without written permission.

DLOPCOI-0-5 B



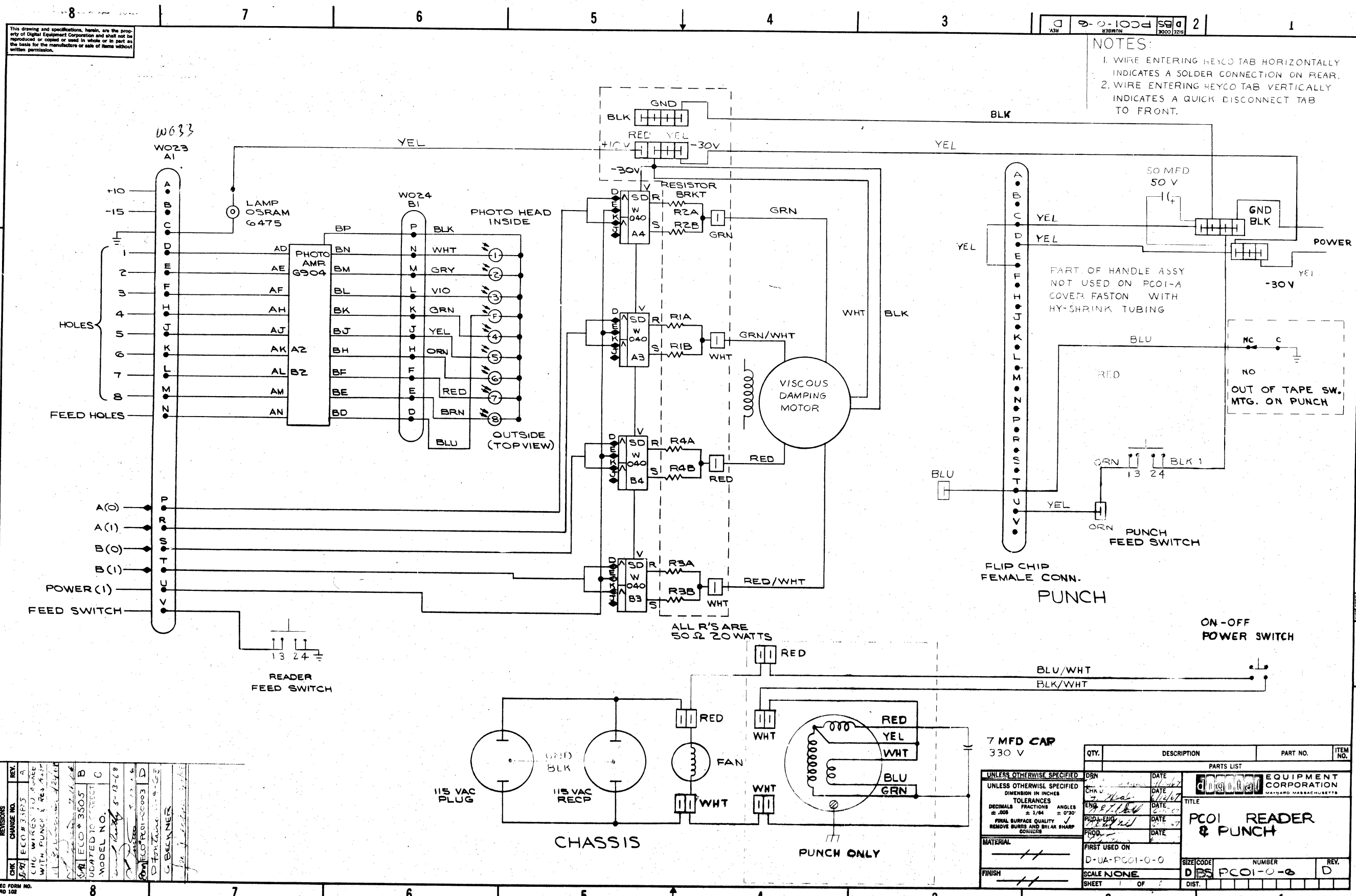
READER PLATE
D-MD-7405941-0-0

DLOPCOI-0-5 B

REVISIONS	DATE	BY	DESCRIPTION
1	5-13-68	W. J. ...	REMOVED 1793 & 2230 DIM ADD 500 f .062 DIM
2	5-13-68	W. J. ...	UPDATED TO CORRECT MODEL NO.

QTY.	DESCRIPTION	PART NO.	ITEM NO.
PARTS LIST			
EQUIPMENT CORPORATION MAYNARD, MASSACHUSETTS			
TITLE READER LAYOUT PCOI			
D-AD-7005434-0-0		NUMBER DLOPCOI-0-5	REV. B
SCALE 2:1	SHEET 1	DIST. G	

This drawing and specifications, herein, are the property of Digital Equipment Corporation and shall not be reproduced or copied or used in whole or in part as the basis for the manufacture or sale of items without written permission.



NOTES:
 1. WIRE ENTERING HEYCO TAB HORIZONTALLY INDICATES A SOLDER CONNECTION ON REAR.
 2. WIRE ENTERING HEYCO TAB VERTICALLY INDICATES A QUICK DISCONNECT TAB TO FRONT.

REV.	CHG. NO.	DATE	BY
1	ECO # 3185	1/15/68	A
2	ECO # 3185	1/15/68	A
3	ECO # 3185	1/15/68	A
4	ECO # 3185	1/15/68	A
5	ECO # 3185	1/15/68	A
6	ECO # 3185	1/15/68	A
7	ECO # 3185	1/15/68	A
8	ECO # 3185	1/15/68	A

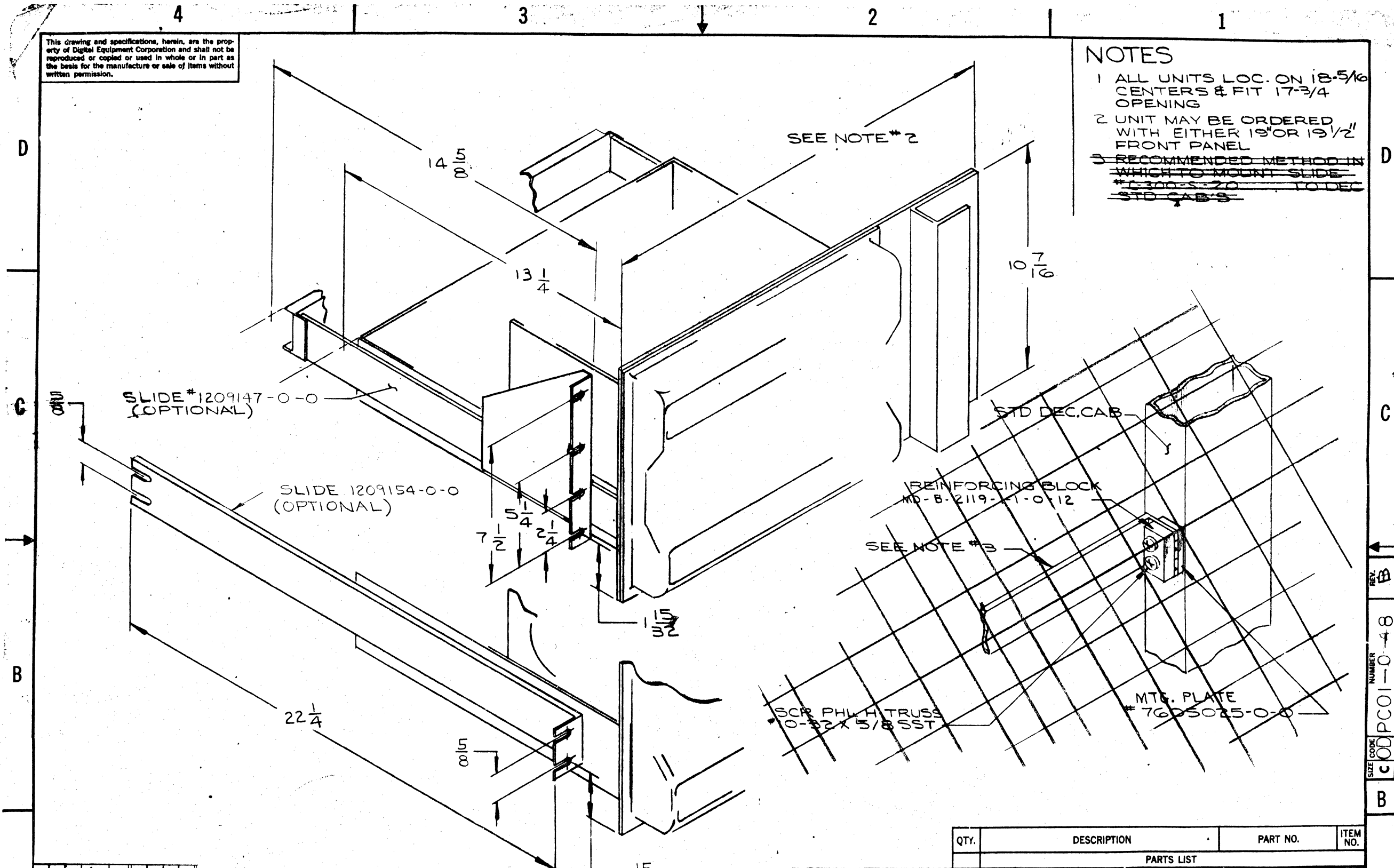
QTY.	DESCRIPTION	PART NO.	ITEM NO.
1	115 VAC PLUG		
1	115 VAC RECP		
1	FAN		
1	VISCOUS DAMPING MOTOR		
1	PHOTO HEAD ASSEMBLY		
1	PHOTO AMPLIFIER		
1	FLIP CHIP FEMALE CONN.		
1	PUNCH FEED SWITCH		
1	ON-OFF POWER SWITCH		
1	7 MFD CAP 330 V		
1	50 MFD 50 V CAP		
1	RESISTOR BRKT		
1	RESISTOR R1A		
1	RESISTOR R1B		
1	RESISTOR R2A		
1	RESISTOR R2B		
1	RESISTOR R3A		
1	RESISTOR R3B		
1	RESISTOR R4A		
1	RESISTOR R4B		
1	OSRAM 6475 LAMP		
1	G904 PHOTO AMP		
1	W023 A1		
1	W024 B1		
1	PHOTO HEAD INSIDE		
1	PHOTO HEAD OUTSIDE (TOP VIEW)		
1	FLIP CHIP FEMALE CONN.		
1	PUNCH FEED SWITCH		
1	ON-OFF POWER SWITCH		
1	7 MFD CAP 330 V		
1	50 MFD 50 V CAP		
1	RESISTOR BRKT		
1	RESISTOR R1A		
1	RESISTOR R1B		
1	RESISTOR R2A		
1	RESISTOR R2B		
1	RESISTOR R3A		
1	RESISTOR R3B		
1	RESISTOR R4A		
1	RESISTOR R4B		
1	OSRAM 6475 LAMP		
1	G904 PHOTO AMP		
1	W023 A1		
1	W024 B1		
1	PHOTO HEAD INSIDE		
1	PHOTO HEAD OUTSIDE (TOP VIEW)		

Note: M040's are used when plugged into 8I, 8L, 12.

This drawing and specifications, herein, are the property of Digital Equipment Corporation and shall not be reproduced or copied or used in whole or in part as the basis for the manufacture or sale of items without written permission.

NOTES

- 1 ALL UNITS LOC. ON 18-5/16 CENTERS & FIT 17-3/4 OPENING
- 2 UNIT MAY BE ORDERED WITH EITHER 19" OR 19 1/2" FRONT PANEL
- ~~3 RECOMMENDED METHOD IN WHICH TO MOUNT SLIDE #1-300-S-20 TO DEC STD CAB'S~~



REV.	CHANGE NO.	DESCRIPTION
A	ECO # 3505	CHG TO CORRECT MODEL NO.
B	ECO 3564	EXTENSIVE CHANGES

Handwritten notes:
 12/28/67
 1/12/68
 Hultala 6/18/68

UNLESS OTHERWISE SPECIFIED	
UNLESS OTHERWISE SPECIFIED	DATE
DIMENSION IN INCHES	6/9/67
TOLERANCES	DATE
DECIMALS ± .005	6/2/67
FRACTIONS ± 1/64	DATE
ANGLES ± 0°30'	DATE
FINAL SURFACE QUALITY	DATE
REMOVE BURRS AND BREAK SHARP CORNERS	DATE
MATERIAL	
FINISH	

QTY.	DESCRIPTION	PART NO.	ITEM NO.
PARTS LIST			
DIGITAL EQUIPMENT CORPORATION MAYNARD, MASSACHUSETTS			
TITLE			
OUTLINE DRAWING PCOI			
SIZE CODE	NUMBER	REV.	
COD	PCOI-0-8	B	
SHEET	OF	DIST.	
1	1	G	

SIZE CODE NUMBER REV. B
 COD PCOI-0-8
 B

DIGITAL EQUIPMENT CORPORATION
MAYNARD, MASSACHUSETTS

ACCESSORY LIST

MADE BY: Dec Moral
DATE: 3-16-70
CHECKED U: [Signature]
DATE: 3-16-70
ENG: [Signature]
DATE: 3-16-70
PRO: [Signature]
DATE: 3-16-70

SECTION: [Blank]
ISSUED SECT.:

LEGEND
D DOCUMENT
DN DOCUMENT CHANGE NOTICE
PA PAPER TAPE ASCII
PB PAPER TAPE BINARY
PM PAPER TAPE READ-IN-MODE

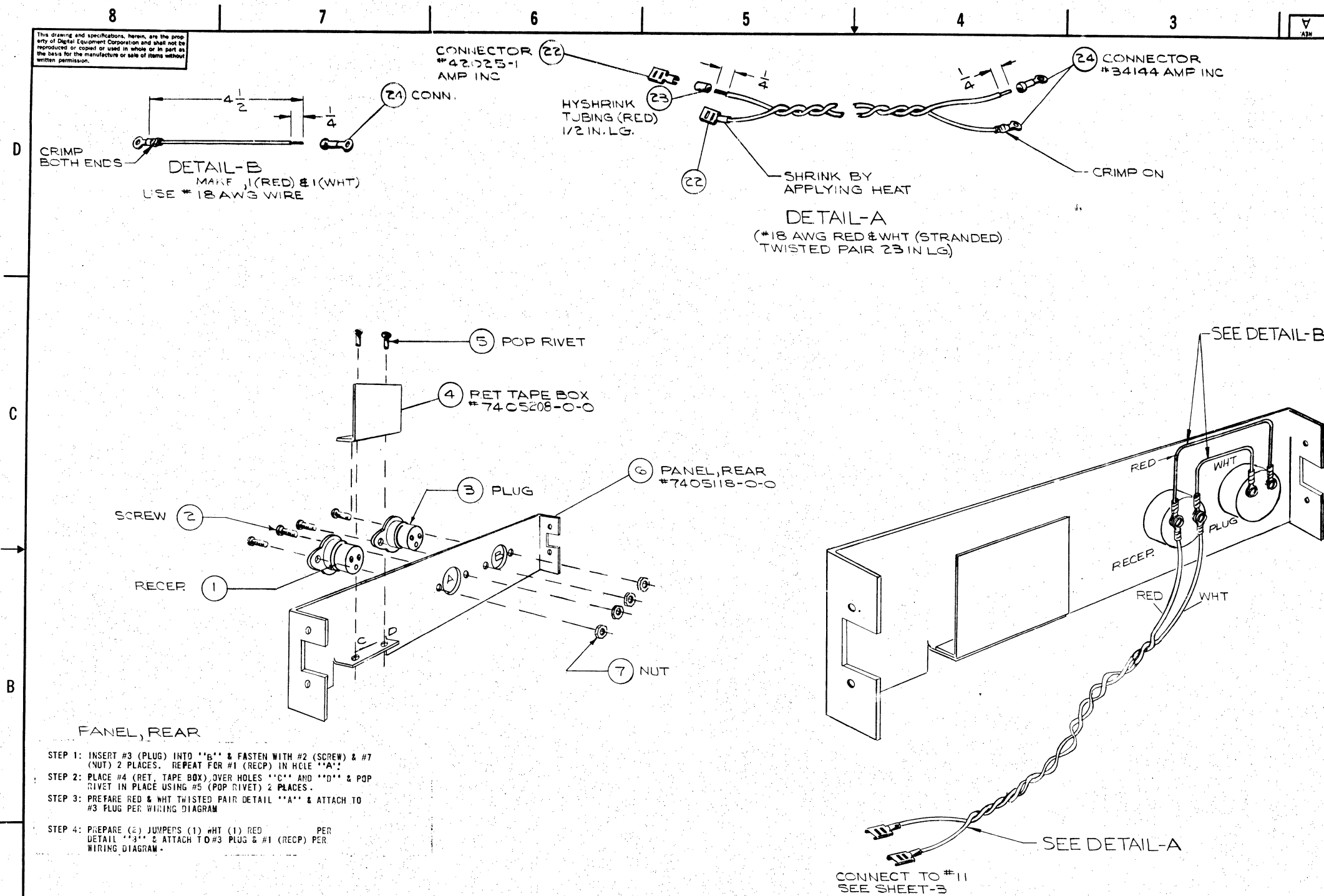
QUANTITY/VARIATION

ITEM NO.	DWG NO. / PART NO.	DESCRIPTION	QUANTITY/VARIATION					KIT CHECK	BY	DATE	INSTALLATION CHECK	BY	DATE
1.	DEC-00-1PIA-D	PC01 Manual											
2.	A-ML-PC01-0	Prints											
3.	A-PL-PC01-0	Prints											
4.	750E500	Prints											
4.	90-08871	Mounting Hardware											
5.	91-07712	Hook Up Wire											
6.	Roytron	Punch Manual	1										
7.	36-5363	Fanfold Tape	4	bxs.									

TITLE: Paper Tape Reader & Punch
ASSY. NO.: [Blank]
SHEET 1 OF 1
SIZE: A AL
CODE: P061-0-0
NUMBER: [Blank]
REV. [Blank]
ECO NO. [Blank]
DIST. [Blank]

This drawing and specifications, herein, are the property of Digital Equipment Corporation and shall not be reproduced or copied or used in whole or in part as the basis for the manufacture or sale of items without written permission.

U 0024500L 2



NOTES

- PANEL, REAR**
- STEP 1: INSERT #3 (PLUG) INTO "B" & FASTEN WITH #2 (SCREW) & #7 (NUT) 2 PLACES. REPEAT FOR #1 (RECP) IN HOLE "A".
 - STEP 2: PLACE #4 (PET TAPE BOX) OVER HOLES "C" & "D" & POP RIVET IN PLACE USING #5 (POP RIVET) 2 PLACES.
 - STEP 3: PREPARE RED & WHT TWISTED PAIR DETAIL "A" & ATTACH TO #3 PLUG PER WIRING DIAGRAM.
 - STEP 4: PREPARE (2) JUMPERS (1) WHT (1) RED PER DETAIL "B" & ATTACH TO #3 PLUG & #1 (RECP) PER WIRING DIAGRAM.

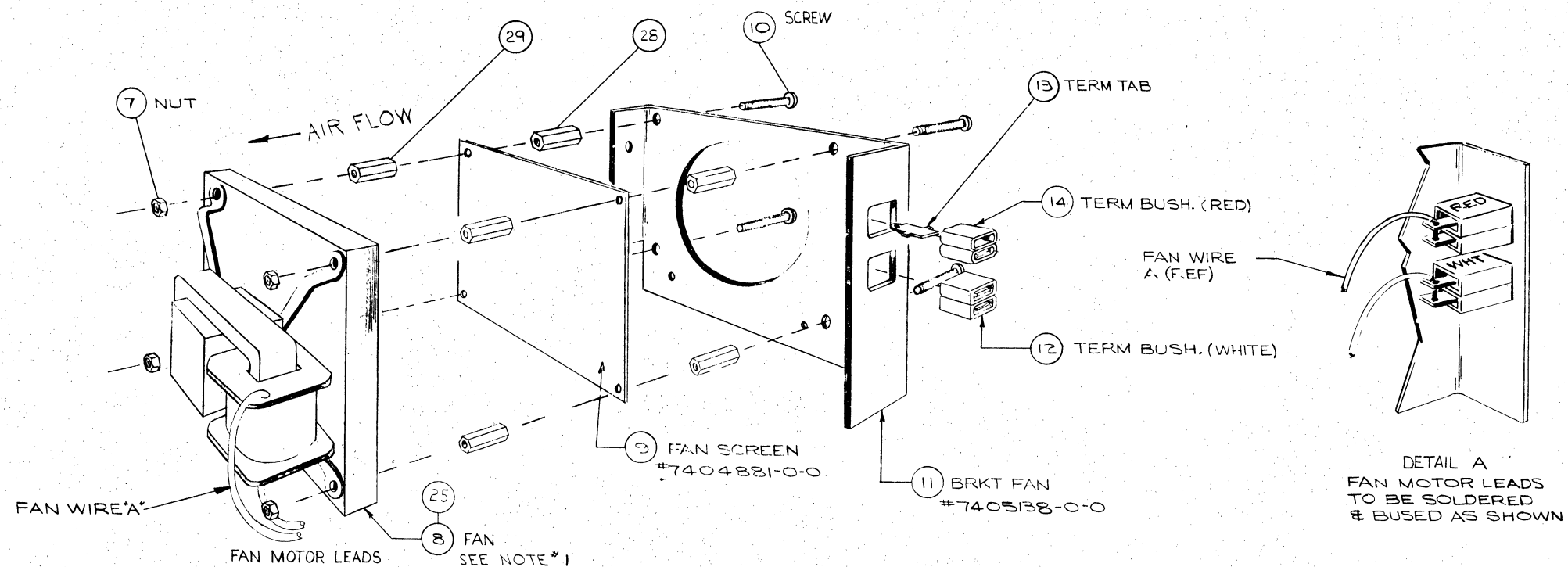
REV.	1
CHANGE NO.	000001
CHK	J.F. O'LOUGHLIN

FIRST USED ON PCOI	QTY.	DESCRIPTION	PART NO.	ITEM NO.
PARTS LIST				
UNLESS OTHERWISE SPECIFIED	DRN	DATE	digital EQUIPMENT CORPORATION MAYNARD MASSACHUSETTS	
UNLESS OTHERWISE SPECIFIED	CHK'D	DATE	TITLE	
DIMENSION IN INCHES	ENG	DATE	CHASSIS ASSY (PCOI)	
TOLERANCES	PROJ. ENG.	DATE	NEXT HIGHER ASSY	
DECIMALS FRACTIONS ANGLES	PRODD.	DATE	D-UA-PCOI-0-0	
±.005 ±.1/64 ±0°30'	SCALE NONE			
FINAL SURFACE QUALITY	SHEET 1 OF 3			
REMOVE BURRS AND BREAK SHARP CORNERS	DIST.			
MATERIAL	SIZE CODE NUMBER REV.			
FINISH	D/A 7005436-0-0 A			

SIZE CODE NUMBER REV. A
D/A 7005436-0-0

This drawing and specifications, herein, are the property of Digital Equipment Corporation and shall not be reproduced or copied or used in whole or in part as the basis for the manufacture or sale of items without written permission.

NOTES:
 1. REPLACE EXISTING FAN BLADE WITH REVERSE PITCH FAN BLADE (PART #27)



FAN ASS'Y

- STEP 1: INSERT #13 (TERM TAB) 2 PLACES IN #14 (TERM BUSHING-RED) & INSERT IN UPPER CUT OUT. REPEAT FOR #12 (TERM BUSH-WHITE) & INSERT IN LOWER CUT OUT.
- STEP 2: INSERT #10 (SCREW) THRU #11 (FAN BRKT) #28 (STAND-OFF), #9 (FAN GRILL), #29 (STAND-OFF) & #8 (FAN (WITH MOTOR LEADS FACING TERM BUSHING)) FASTEN #7 (NUT). REPEAT 4 PLACES.
- STEP 3: CUT FAN LEADS TO 4" LG. STRIP INS. 3/8 FROM ENDS, INSERT THRU BOTH HOLES OF TERM BUSH (TO FORM BUS) & SOLDER UPPER WIRE TO "RED" TERM BUSH, LOWER WIRE TO WHITE TERM BUSH (SEE DETAIL A).

SIZE CODE NUMBER
 DAD 7005436-0-0

B

A

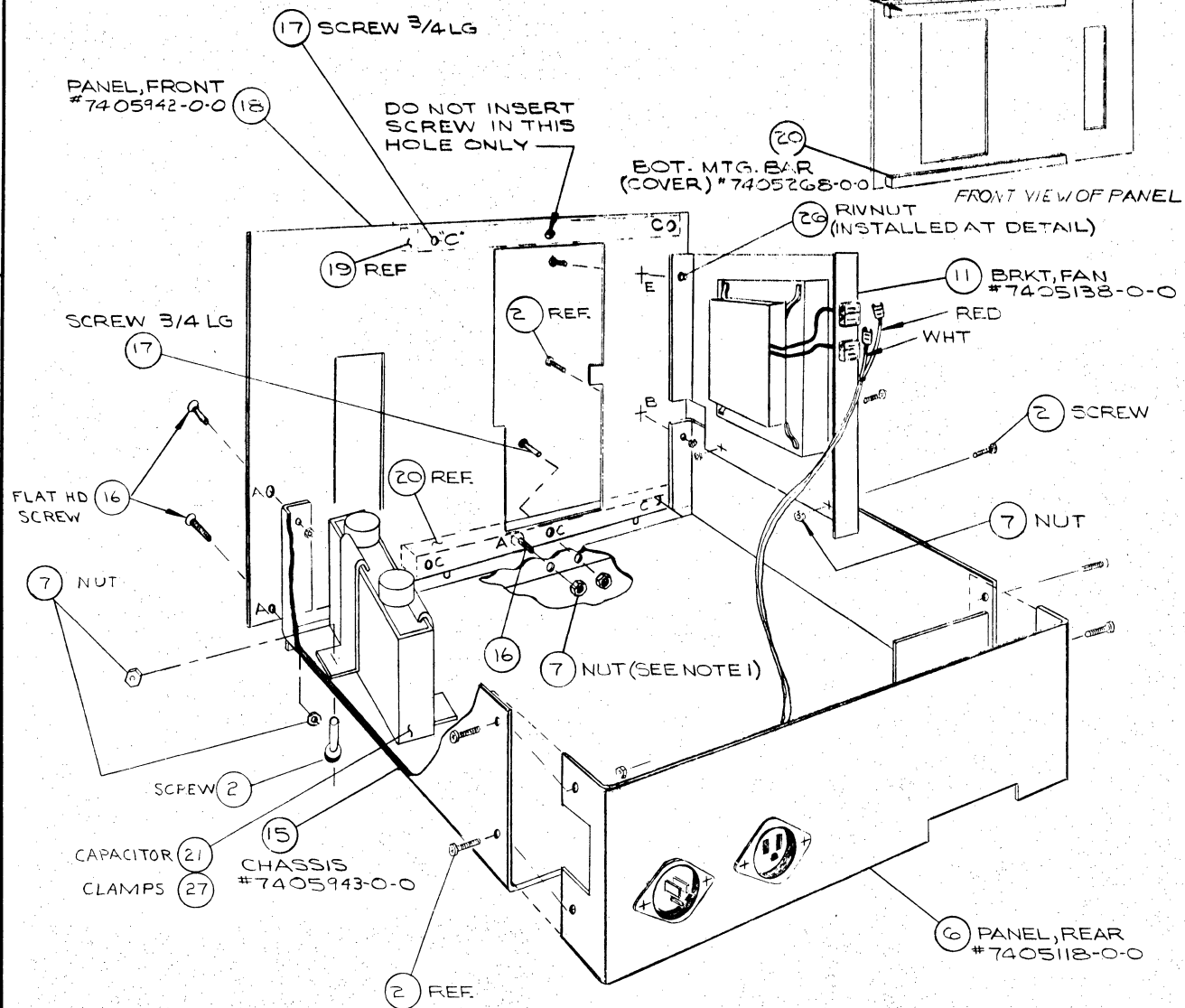
REV.	
CHG	
CHK	

UNLESS OTHERWISE SPECIFIED
 DIMENSION IN INCHES
 TOLERANCES
 DECIMALS FRACTIONS ANGLES
 ±.005 ±.1/64 = 0°30'
 FINAL SURFACE QUALITY
 REMOVE BURRS AND BREAK SHARP CORNERS

QTY.	DESCRIPTION	PART NO.	ITEM NO.
PARTS LIST			
	Digital Equipment Corporation MAYNARD, MASSACHUSETTS		
	TITLE CHASSIS ASS'Y (PCOI)		
	FIRST USED ON D-UA-PCOI-0-0	SIZE CODE DAD	NUMBER 7005436-0-0
	SCALE NONE		REV. A
	SHEET 2 OF 3	DIST.	

This drawing and specifications herein are the property of Digital Equipment Corporation and shall not be reproduced or copied or used in whole or in part as the basis for the manufacture or sale of items without written permission.

TOP MTG BAR (COVER)
#7405228-0-0

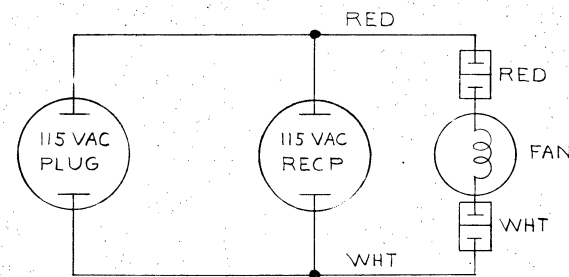


CHASSIS ASS'Y

- STEP 1: FASTEN #18 (PANEL, FRONT) TO #15 (CHASSIS) USING #18 (FLAT HEAD SCREW) & #7 (NUT) 3 PLACES. FASTEN #2 (SCREW) AND #7 (NUT) 1 "B" PLACE.
- STEP 2: FASTEN #20 (BOT MTG BAR, COVER) TO #18 (PANEL, FRONT) & #15 (CHASSIS) USING #17 (SCREW) & #7 (NUT) 3 PLACES MAKE SURE ROLL PINS ON #20 ARE FACING TOWARD BOTTOM.
- STEP 3: FASTEN #19 (TOP MTG BAR, COVER) TO #18 (PANEL, FRONT) USING #17 (SCREW) & #7 (NUT) 2 PLACES IN END HOLES MARKED "C" (DO NOT PUT SCREW IN CENTER HOLE).
- STEP 4: FASTEN #8 (PANEL, REAR) TO #15 (CHASSIS) USING #2 (SCREW) & #7 (NUT) 4 PLACES.
- STEP 5: FASTEN #11 (BRKT, FAN) TO #15 (CHASSIS) USING #2 (SCREW) & #7 (NUT) 2 PLACES ALSO FASTEN #2 (SCREW) THRU #18 (PANEL, FRONT) INTO #8-32 RIVNUT IN #11 (BRKT, FAN) "1E" PLACE.
- STEP 6: PLUG TWISTED PAIR CONNECTORS INTO #11 (BRKT, FAN) RED WIRE TO "RED" TERM BUSHING WHITE WIRE TO "WHT" TERM BUSH.
- STEP 7: ATTACH CAP #21 TO CHASSIS BY PUTTING FEET ON CAP AS SHOWN & THEN ATTACH HDW #2 & #7.

NOTES

- 1 ALL NUTS TO BE KEPS #6-32
- 2 ALL SCREWS TO BE PHILLIPS FAN HD. MACH. SCREWS #6-32 X 3/8 LG. UNLESS OTHERWISE SPECIFIED



CHASSIS

REVISIONS
CHANGE NO.

DEC FORM NO. DRD 102

UNLESS OTHERWISE SPECIFIED
DIMENSION IN INCHES
TOLERANCES
DECIMALS FRACTIONS ANGLES
±.005 ± 1/64 ± 0'30"
FINAL SURFACE QUALITY
REMOVE BURRS AND BREAK SHARP CORNERS

DRN	DATE
CHK'D	DATE
ENG	DATE
PRD. ENG	DATE
PROB	DATE
FIRST USED ON	
D-UA-PCOI-0-0	
SCALE NONE	
SHEET 3 OF 3	

PARTS LIST	
QTY.	DESCRIPTION
	PART NO. ITEM NO.
<p>digital EQUIPMENT CORPORATION MAYNARD, MASSACHUSETTS</p> <p>TITLE CHASSIS ASSY (PCOI)</p>	
SIZE CODE	NUMBER
D AD	7005436-0-0
REV.	A

REV. A
NUMBER 7005436-0-0
SIZE CODE D AD

PARTS LIST		DIGITAL EQUIPMENT CORPORATION MAYNARD, MASSACHUSETTS			REVISIONS			
PART NO.	DRWG. NO.	NO. REQD.	DESCRIPTION ITEM — STOCK SIZE — CAT. NO. — MFG.	DEC. STOCK NO.	CHANGE NO.	DATE	ENG.	
	D-AD-7005436-0-0 SH #3 OF 3		CIRCUIT SCHEMATIC		A-PC01-00001	1-25-68	1/78	
1		1	PCBP #160-4 AMPHENOL					
2		12	SCR PHL HD PAN 6-32 x 3/8 SS					
3		1	PLUG #160-5 AMPHENOL					
4	C-MD-7405208-0-0	1	RET, TAPE BOX (CHASSIS)	7405208-0-0				
5		2	POP RIVET #AD5ABS 5/32D USHC					
6	D-MD-7405118-0-0	1	PANEL, REAR (CHASSIS)	7405118-0-0				
7		23	NUT, KEPS 6-32 SST					
8		1	FAN	3408015-0-0				
9	C-MD-7404881-0-0	1	FAN SCREEN	7404881-0-0				
10		4	SCR PHL HD PAN 6-32 x 1 3/4 SST	90-06031-1				
11	D-MD-7405138-0-0	1	BRKT, FAN (CHASSIS)	7405138-0-0				
12		1	JUNC BUSH DC-202-2 (WHT) HEYMAN					
13		4	TERM TAB #T-202-S HEYMAN					
14		1	JUNC BUSH DC-202-2 (RED) HEYMAN					
15	D-IA-7405943-0-0	1	CHASSIS	7405943-0-0				
MADE BY R. BERNIER		DATE 4/20/67	TITLE CHASSIS ASSY (PC01)		SIZE A	CODE PL	NUMBER 7005436-0-0	REV. A
CHECKED D. HEALY		DATE 6/1/67	FOR		ASSY. NO. D-AD-7005436-0-0		SHEET 1 OF 2	
ENG.		DATE						

DEC FORM NO.
DRA 109

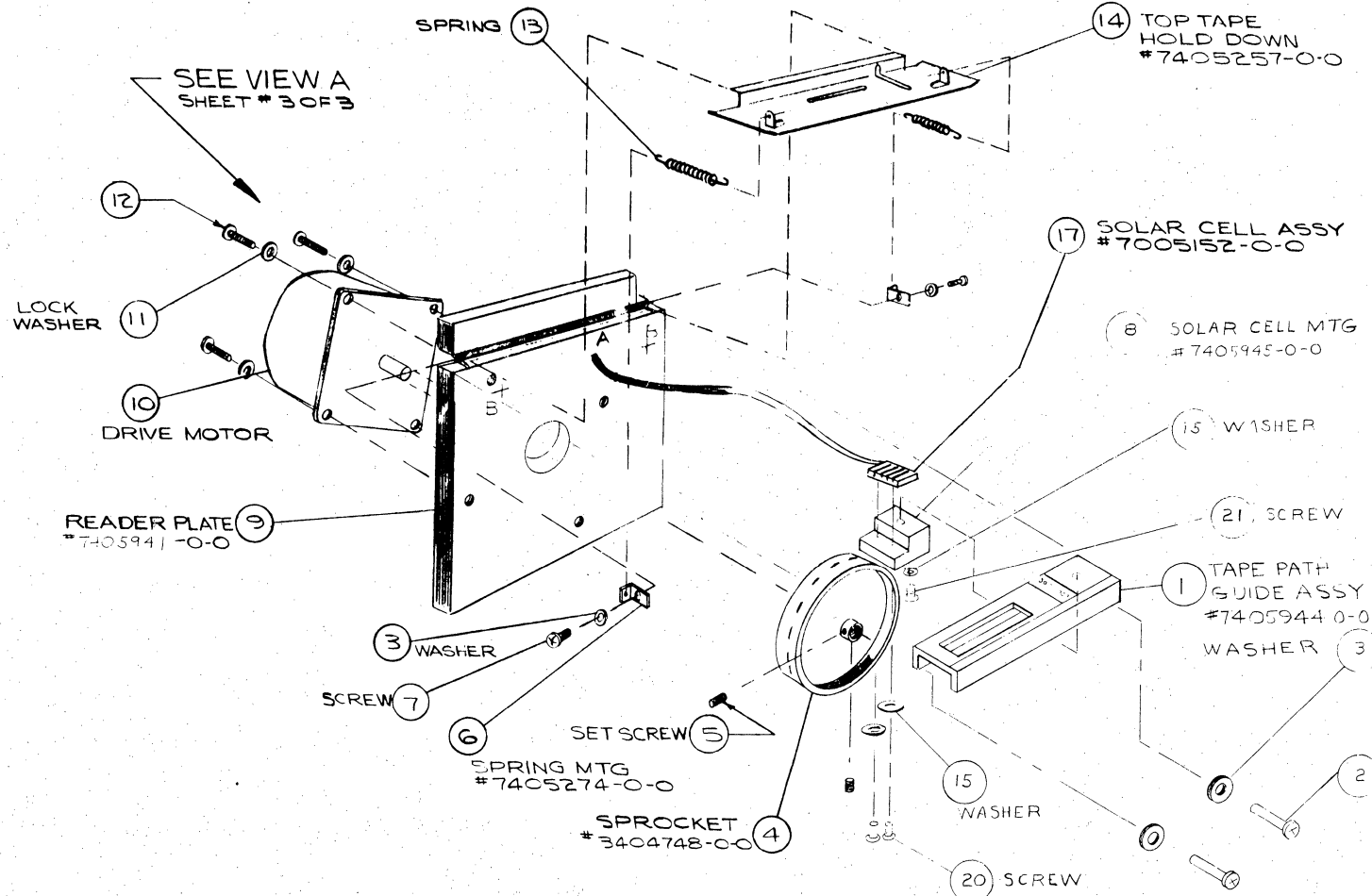
PARTS LIST		DIGITAL EQUIPMENT CORPORATION MAYNARD, MASSACHUSETTS			REVISIONS		
PART NO.	DRWG. NO.	NO. REQD.	DESCRIPTION ITEM — STOCK SIZE — CAT. NO. — MFG.	DEC. STOCK NO.	CHANGE NO.	DATE	ENG.
16		3	SCR PHL FLAT HD 6-32 X 1/2 SST				
17		5	SCR PHL HD PAN 6-32 X 3/4 SST				
18	D-MD-7405942-0-0	1	PANEL FRONT (CHASSIS	7405942-0-0			
19	B-MD-7405228-0-0	1	TOP MTG BAR (COVER)	7405228-0-0			
20	B-MD-7405268-0-0	1	BOT MTG BAR (COVER)	7405268-0-0			
21		1	CAP 6MFD 330V #753-7-7 & CLAMPS				
22		2	CONN #42025-1 AMP INC.				
23		2	#14 X 1/2 LG (RED) HYSHRINK TUBING				
24		6	CONN #34144 #18 WIRE AMP INC.				
25			REVERE PITCH FAN BLADE	34-216-304			
26		1	RIVNUT, #6-32 #SS6-120, GOODRICH				
27		2	FOOTED BRKT TYPE B #CP07AF4 SANGAMO				
28		4	SPACER, #6-32 X 5/8 LG	90-06857			
29		4	SPACER, #6 HOLE X 5/8 LG	90-06806			
MADE BY R. BERNIER		DATE 4/20/67	TITLE CHASSIS ASSY (PC01)		SIZE CODE A PL	NUMBER 7005436-0-0	REV. A
CHECKED D. HEALY		DATE 6/1/67	FOR		ASSY. NO. D-AD-7005436-0-0		SHEET 2 OF 2
ENG. / / /		DATE					

DEC FORM NO.
DRA 109

This drawing and specifications, herein, are the property of Digital Equipment Corporation and shall not be reproduced or copied or used in whole or in part as the basis for the manufacture or sale of items without written permission.

0-0 100-434-0-0 1549 2 1

READER PLATE ASSY



- STEP 1: MOUNT #10 (MOTOR) TO REAR OF #9 (READER PLATE) AS SHOWN USING #12 (SCREW) AND #11 (WASHER)-4 PLACES. NOTE POS. OF MOTOR CABLE CONN WHICH IS LOCATED AT 8 O'CLOCK POS. WHEN VIEWED FROM REAR-SEE ALSO VIEW "A" SHEET #3.
- STEP 2: PLACE #4 (SPROCKET ON MOTOR SHAFT WITH NARROW FLANGE TOWARD #9 READER PLATE AND SET SCREW SIDE OF HUB OUT DO NOT TIGHTEN SCREWS.
- STEP 3: PUT #17 (SOLAR CELL ASSY) THRU "A" HOLE IN #9 (READER PLATE) FROM REAR AND INTO #8 (SOLAR CELL MOUNTING) FASTEN WITH #20 (SCREW) AND #15 (WASHER) TWO PLACES, DO NOT TIGHTEN. ATTACH #8 (SOLAR CELL MOUNTING) TO #1 (TAPE PATH GUIDE) WITH #21 (SCREW) AND #15 (WASHER), ADJUST CELL IN MOUNTING AS SEEN THRU HOLES AND TIGHTEN.
- STEP 4: FASTEN #1 (FRONT GUIDE) TO READER PLATE #9 USING #2 (SCREW) & #3 (WASHER) THRU B HOLES. DO NOT TIGHTEN SCREWS.
- STEP 5: FASTEN #16 (RES. BRKT) USING #19 (SCREW) & #11 (WASHER) 2 PLACES (SEE SHEET #3 OF 3).
- STEP 6: INSERT CABLE #36 IN MOTOR, INSERT LEADS INTO CORRECT TERM BUSHING AND APPLY POWER TO #10 (MOTOR) TO LOCK SHAFT IN NONROTATING POSITION (SEE SHEET #3).
- STEP 7: USING ADJUSTMENT GAGE #B-MD-9605206-0-0 PUT SMALL HOLES IN GAGE OVER ONE TOOTH OF SPROCKET AND WITH NARROW EDGE OF GAGE TOWARD READER PLATE. SLOWLY REVOLVE SPROCKET AND SLIDE IN AND OUT ON SHAFT UNTIL GAGE JUST TOUCHES READER PLATE ON REAR AND THE RIGHT HAND EDGE OF THE SLOT LINES UP WITH THE RIGHT HAND EDGE OF THE PHOTO CELL HOLES OF #1 TAPE PATH GUIDE HOLDING ALL PIECES FIRMLY TIGHTEN SCREWS IN TAPE GUIDE BEING CERTAIN THAT ALL OF THESE PIECES ARE STRAIGHT.
- STEP 8: FASTEN (2) #5 (SET SCREWS) IN #4 (SPROCKET) AND RECHECK THE POSITION OF SPROCKET & CELL HOLES WITH TAPE GAUGE.
- STEP 9: FASTEN #6 (SPRING MTG.) INTO #9 (READ. PLATE) EDGE NOTCHES WITH BENT TAB TO REAR USING #7 (SCREW & #3 (WASHER) 2 PLACES.
- STEP 10: HOOK #13 (SPRING) INTO #14 (TAPE HOLD DOWN) AND PLACE IN POSITION OVER #1 TAPE GUIDE AND #4 SPROCKET BEING CERTAIN THAT BACK EDGE IS IN GROOVE OF #9 (READ. PLATE) & BETWEEN #6 (SPRING MTG.)
- STEP 11: USING LONG NOSE PLIERS STRETCH #13 (SPRING) TO #6 (SPRING MTG.) AND HOOD INTO SMALL HOLE. REPEAT FOR OTHER END. #14 (TAPE HOLD DOWN) SHOULD HAVE ENOUGH SPRING TENSION TO STAY IN DOWN POSITION.

REV	CHANGE NO.	DATE
A	ECO 3173	6/12/67
B	ECO #3385	8/28/67
C	ECO #3385	8/28/67
D	ECO #3385	8/28/67

CHECKED: *[Signature]*
 DRAWN: *[Signature]*
 APPROVED: *[Signature]*
 DATE: 11/19/67

UNLESS OTHERWISE SPECIFIED	DRN	DATE
DIMENSION IN INCHES	CHWD	DATE
TOLERANCES	ENG	DATE
DECIMALS FRACTIONS ANGLES	PRD ENG	DATE
± .005 ± 1/64 ± 0°30'	PRD	DATE
FINAL SURFACE QUALITY ✓		
REMOVE BURRS AND BREAK SHARP CORNERS		

QTY.	DESCRIPTION	PART NO.	ITEM NO.
	PARTS LIST		

UNLESS OTHERWISE SPECIFIED		DRN	DATE
DIMENSION IN INCHES		CHWD	DATE
TOLERANCES		ENG	DATE
DECIMALS FRACTIONS ANGLES		PRD ENG	DATE
± .005 ± 1/64 ± 0°30'		PRD	DATE
FINAL SURFACE QUALITY ✓			
REMOVE BURRS AND BREAK SHARP CORNERS			

FIRST USED ON		TITLE	
D-UA-PCOI-0-0		READER ASSY (PCOI)	
SCALE NONE		SIZE CODE	NUMBER
SHEET 1 OF 3		D AD	7005434-0-0
		DIST.	C

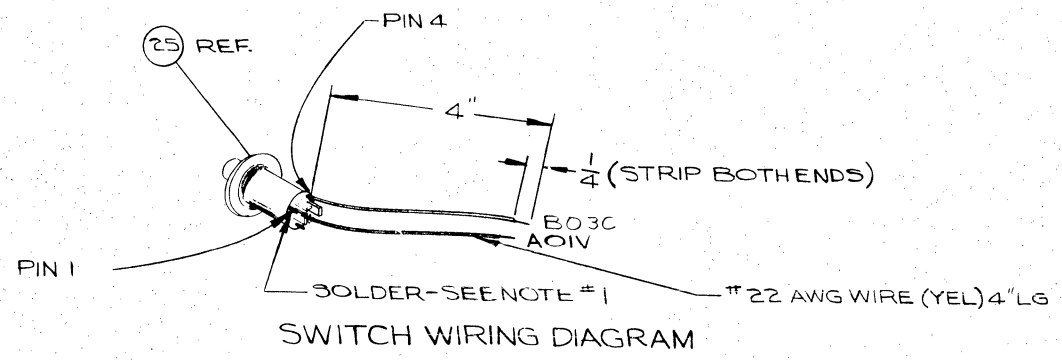
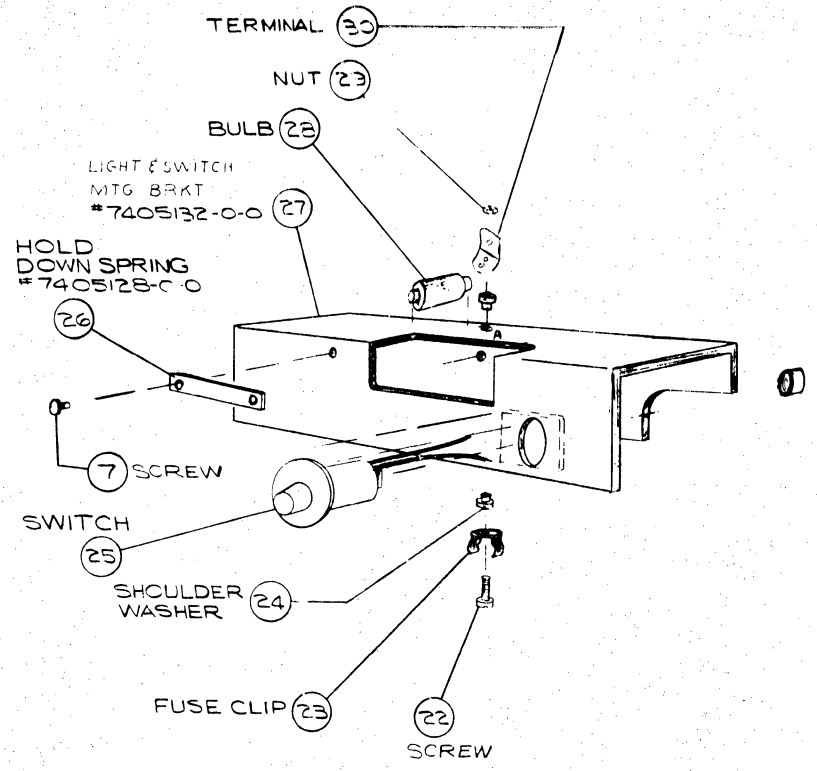
This drawing and specifications, herein, are the property of Digital Equipment Corporation and shall not be reproduced or copied or used in whole or in part as the basis for the manufacture or sale of items without written permission.

0-0 4845 002 2 1

NOTES
 1 SOLDER SHOULD NOT PROTRUDE ABOVE UNDER CUT DIA OF SWITCH

MTG BRKT ASSY

- STEP 1: PREPARE #25 (SWITCH) PER SWITCH WIRING DIAGRAM. TAG ENDS OF WIRES PER NUMBERS INDICATED.
- STEP 2: REMOVE SMALL PROTRUSION ON BACK OF #25 (SWITCH BEZEL). INSERT SWITCH IN #27 (SWITCH BRKT). FASTEN #25 (SWITCH NUT). TIGHTEN NUT MAKE SURE BEZEL ON FRONT IS SQUARE TO BOT. EDGE OF #27 (SW BRKT).
- STEP 3: FASTEN #26 (SPRING) WITH #7 (SCREW). TIGHTEN, KEEPING SPRING STRAIGHT TO BOT SURFACE.
- STEP 4: INSTALL #24 (WASHER) ON EITHER SIDE OF HOLE 'A'. PLACE #23 (FUSE CLIP) WITH HOLE NEAREST EDGE OF CLIP FACING CUT OUT ON #24 (WASHER). INSERT #22 (SCREW) THRU CLIP & WASHER. PLACE #30-TERMAL (NOTE POS. OF TERM). ON SCREW AND FASTEN WITH #29 (NUT) ATTACH #28 BULB.



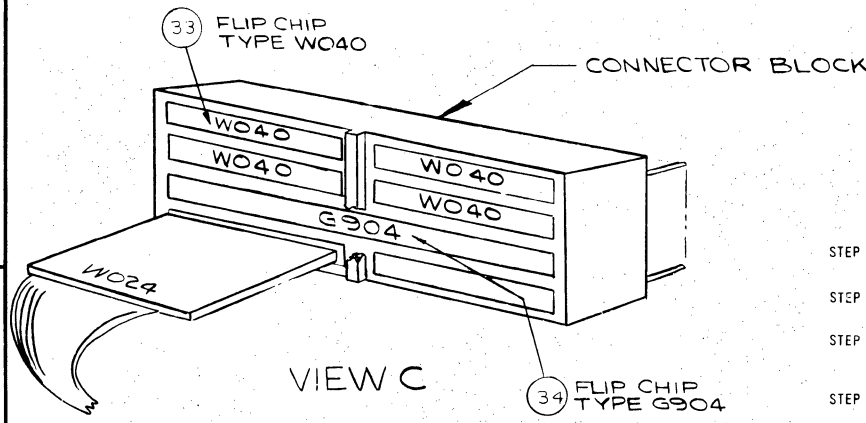
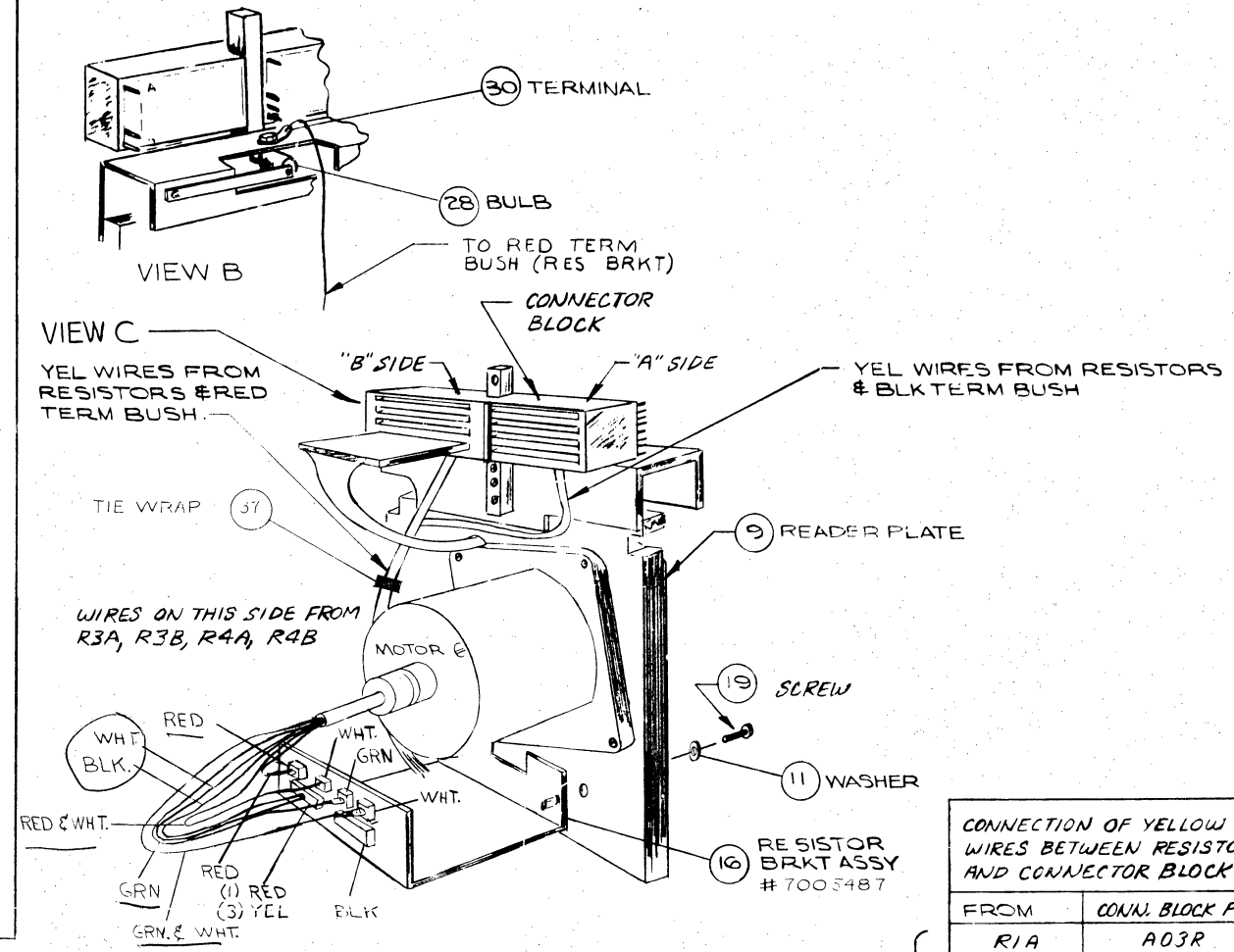
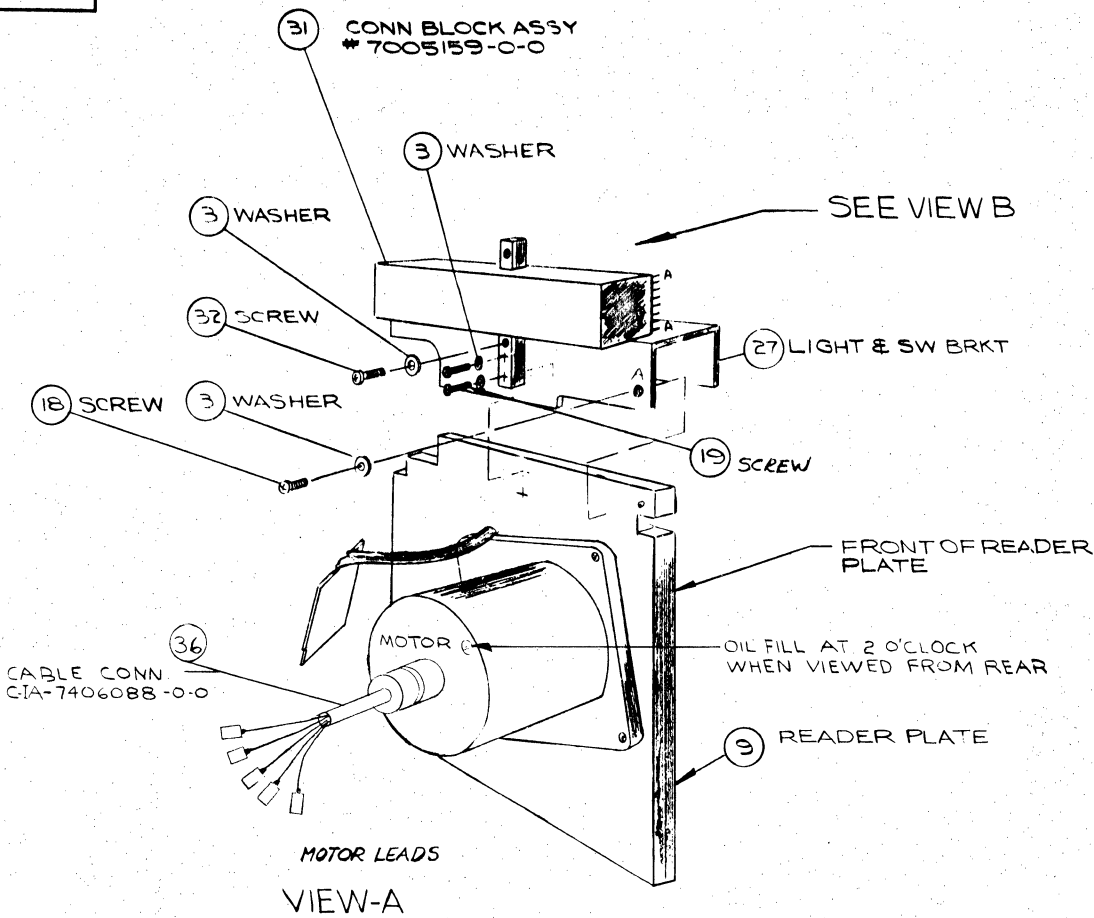
QTY.	DESCRIPTION	PART NO.	ITEM NO.
PARTS LIST			
DIGITAL EQUIPMENT CORPORATION MAYFARL MASSACHUSETTS			
TITLE		REV.	
READER ASSY (PCOI)		C	
FIRST USED ON		SIZE CODE	NUMBER
D-UA-PCOI-0-0		D AD	7005434-0-0
SCALE NONE		DIST.	
SHEET 2 OF 3			

UNLESS OTHERWISE SPECIFIED
 DIMENSION IN INCHES
 TOLERANCES
 DECIMALS FRACTIONS ANGLES
 ±.005 ±.004 ±.030
 FINAL SURFACE QUALITY
 REMOVE BURRS AND BREAK SHARP
 CORNERS

REVISIONS	REV.
CHANGE NO.	
CHK	

DEC FORM NO. DRD 100 (ELLCOVEL 103 PLAIN)

This drawing and specifications, herein, are the property of Digital Equipment Corporation and shall not be reproduced or copied or used in whole or in part as the basis for the manufacture or sale of items without written permission.



READER ASSY

- STEP 1: SOLDER WIRES FROM #16 (RES. BRKT) TO #31 (CONN BLOCK ASSY) PER WIRING CHART.
- STEP 2: FASTEN #31 (CONN BLOCK ASSY) TO #27 (MTG BRKT) USING #32 (SCREW) & #3 (WASHER).
- STEP 3: FASTEN ASSY OF #31 (CONN BLOCK) AND #27 (MTG BRKT) TO #9 (READ. PLATE) WITH #19 (SCREW) AND #3 (WASHER) 2 PLACES & #18 SCREW AND #3 WASHER. 1 'A' PLACE.
- STEP 4: WIRE WRAP WIRES FROM PUSH BUTTON SWITCH ONE TO PIN # A01V AND ONE TO PIN B03C ON CONN BLOCK.
- STEP 5: CUT A-1 IN. LONG PIECE OF #22 AWG YEL WIRE SOLDER ONE END TO SOLDER TERM OF BULB CLIP & WIRE WRAP OTHER END TO PIN B02A. SEE VIEW "B" & WIRING CHART.
- STEP 6: PLUG #124 ASSY INTO LOWER LEFT POS. OF CONN BLOCK.
- STEP 7: INSTALL FLIPCHIP #33 & 34 IN POS SHOWN IN VIEW C.

*Slo-Syn Type #H55φ
Superior Elec. #H550-104*

12-09369-00

CONNECTION OF YELLOW WIRES BETWEEN RESISTORS AND CONNECTOR BLOCK

FROM	CONN. BLOCK PIN
R1A	A03R
R1B	A03S
R2A	A04R
R2B	A04S
R3A	B03R
R3B	B03S
R4A	B04R
R4B	B04S
TERM BUSH (RED)	TO TERM ON BULB
TERM BUSH (YEL)	B03V
TERM BUSH (BLACK)	A01C

UNLESS OTHERWISE SPECIFIED DIMENSION IN INCHES DECIMALS FRACTIONS ANGLES ±.005 ± 1/64 ± 0'30" FINAL SURFACE QUALITY REMOVE BURRS AND BREAK SHARP CORNERS	DRN: <i>J. J. Dealy</i> DATE: 6/2/67 CHK'D: <i>J. J. Dealy</i> DATE: 6/2/67 ENGR: <i>J. J. Dealy</i> DATE: 6/2/67 PROD: <i>J. J. Dealy</i> DATE: 6/2/67	DATE: 6/13/67 DATE: 6/2/67 DATE: 6/2/67 DATE: 6/2/67	PARTS LIST digital EQUIPMENT CORPORATION MAYNARD, MASSACHUSETTS
MATERIAL: <i>11</i>	FIRST USED ON: D-UA-PCOI-0-0	SCALE: NONE	TITLE: READER ASSY (PCOI)
FINISH: <i>11</i>	SIZE CODE: D AD	SHEET: 3 OF 3	NUMBER: 7005434-0-0 REV. C

PARTS LIST		DIGITAL EQUIPMENT CORPORATION MAYNARD, MASSACHUSETTS				REVISIONS		
PART NO.	DRWG. NO.	NO. REQD.	DESCRIPTION ITEM — STOCK SIZE — CAT. NO. — MFG.	DEC. STOCK NO.	CHANGE NO.	DATE	ENG.	
32		1	SCR PHL HD PAN 6-32 x 7/8 SST					
33	R-CS-W040	4	FLIP CHIP TYPE W040					
34	C-CS-G904-0-1	1	FLIP CHIP TYPE G904	G904-0-0				
*35	B-MD-9603026-0-0		ALIGNMENT GAUGE					
36	C-IA-7406088-0-0	1	CABLE, CONN TO MOTOR					
37		A/R	TIE WRAP SST-2-B BANDUIT					
* NOT SHOWN ON ASSY USED FOR ASSY PURPOSES (NOT A PROD ITEM)								
MADE BY R. BERNIER		DATE 4/13/67	TITLE READER ASSY (PC01)		SIZE CODE A PL	NUMBER A-PL-7005434-0-0	REV. C	
CHECKED D. HEALY		DATE 5/31/67	FOR		ASSY. NO.	D-AD-7005434-0-0	SHEET 3 OF 3	
ENG.		DATE						

* Stepping Motor is H55φ - 1φ41 in PC01 in TPL.

See PC01, φ2, φ3
Tech T for
12-04735 - new oil-damped motor
74-05941
Mounting photo.

Superior Electric Co.
Bristol, Conn. (requires connector)

~~A-05383-00~~
12-09369-00 is LA3φ

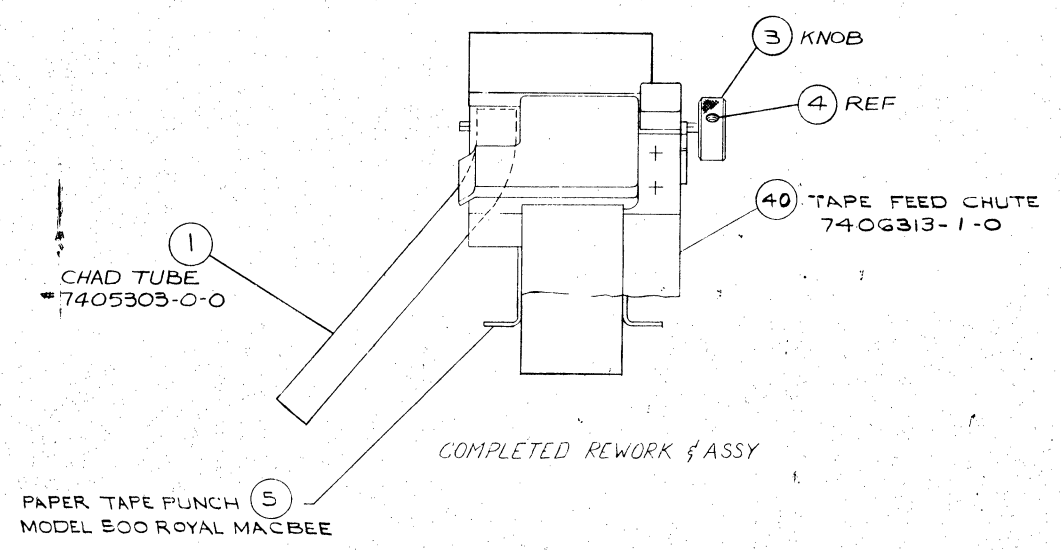
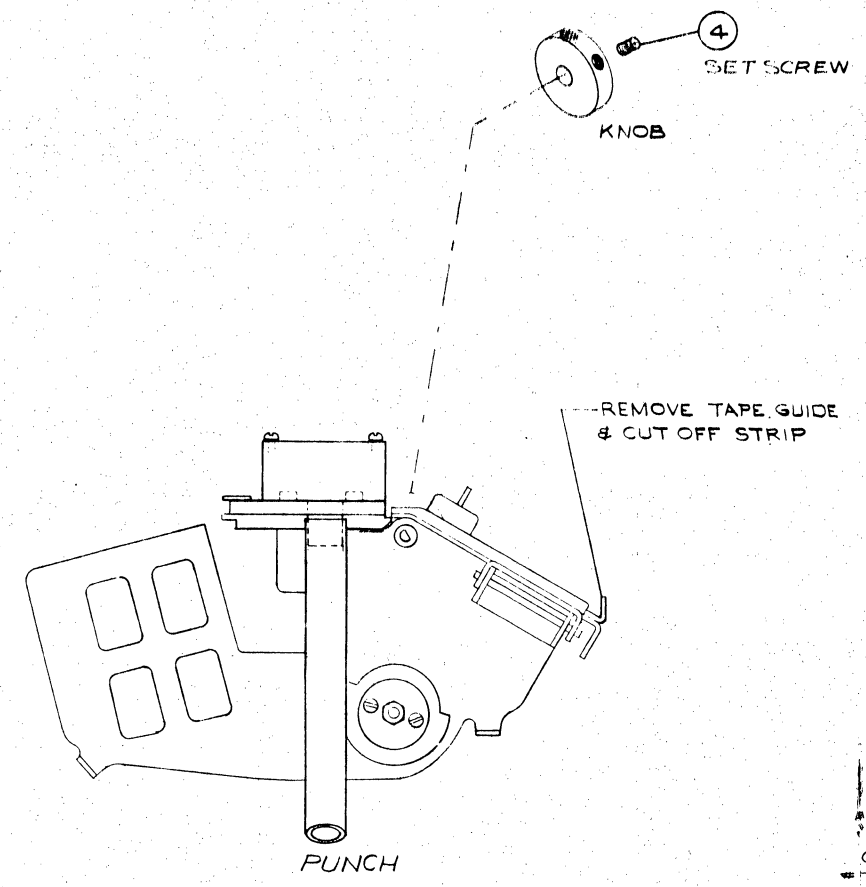
also Slo-Syn type # H55φ

PARTS LIST		DIGITAL EQUIPMENT CORPORATION MAYNARD, MASSACHUSETTS				REVISIONS		
PART NO.	DRWG. NO.	NO. REQD.	DESCRIPTION ITEM — STOCK SIZE — CAT. NO. — MFG.	DEC. STOCK NO.	CHANGE NO.	DATE	ENG.	
1	D-IA-7405944-0-0	1	TAPE PATH GUIDE ASSY	7405944-0-0	A-3173	11/17/67	AS	
2		2	SCR PHL HD PAN 6-32 x 5/8 SST		B-3385 CHG ASSY	3/27/68	AS	
3		8	WASH LOCK INT #6 SST		C-PC01-00003 CHG. ITEM #25	11/1/66	AS	
4	C-MD-3404748-0-0	1	TAPE SPROCKET (READER)	3404748-0-0				
5		2	SCR HDLESS CUP PT 6-32 x 1/8 SST					
6	A-MD-7405274-0-0	2	SPRING MTG (READER)	7405274-0-0				
7		3	SCR PHL HD PAN 6-32 x 1/4 SST					
8	B-MD-7405945-0-0	1	SOLAR CELL MOUNTING	7405945-0-0				
9	D-MD-7405941-0-0	1	READER PLATE (READER) VIS. DAMP. MOTOR	7405941-0-0				
10	12-09369-00	1	#H550-104 SUPERIOR ELEC *					
11		6	WASH LOCK EXT #6 SST					
12		4	SCR PHL HD TRUSS 6-32 x 1/2 SST					
13		2	SST SPRING LEE SPRING CO	LE-031B-2				
14	D-MD-7405257-0-0	1	TOP TAPE HOLD DOWN (READER)	7405257-0-0				
15		3	WASH LOCK INT #2 SST					
16	A-PL-7005487-0-0	1	RESISTOR BRKT ASS'Y	7005487-0-0				
MADE BY R. BERNIER		DATE 4/13/67	TITLE READER ASS'Y (PC01)		SIZE CODE A PL	NUMBER A-PL-7005434-0-0	REV. C	
CHECKED D. HEALY		DATE 5/31/67	FOR		ASSY. NO.			

PARTS LIST		DIGITAL EQUIPMENT CORPORATION MAYNARD, MASSACHUSETTS				REVISIONS		
PART NO.	DRWG. NO.	NO. REQD.	DESCRIPTION ITEM — STOCK SIZE — CAT. NO. — MFG.	DEC. STOCK NO.	CHANGE NO.	DATE	ENG.	
17	A-PL-7005152-0-0	1	SOLAR CELL ASS'Y (READER)	7005152-0-0				
18		1	SCR PHL HD PAN 6-32 x 3/8 SST					
19		1	SCR PHL HD PAN 6-32 x 1 SST					
20		2	SCR PHL HD PAN 2-56 x 3/16 SST					
21		1	SCR PHL HD PAN 2-56 x 5/16 SST					
22		1	SCR PHL HD PAN 4-40 x 1/2 SST					
23		1	FUSE CLIP #6009 16C AUGAT					
24		2	FIBER SHOULDER WASHER #2153 H.H. SMITH					
25		1	MOMENTARY SW. # B20059	1209247				
26	A-MD-7405128-0-0	1	HOLD DOWN SPRING	7405128-0-0				
27	D-MD-7405132-0-0	1	MTG BRKT, LIGHT & SWITCH	7405132-0-0				
28		1	BULB #6475 OSRAM	34-6475				
29		1	NUT KEPS 4-40 SST					
30		1	TERMINAL #2104-06-0-0 SHAKEPROOF					
31	A-PL-7005159-0-0	1	CONN BLOCK ASSY	7005159-0-0				
MADE BY R. BERNIER		DATE 4/13/67	TITLE READER ASSY (PC01)		SIZE CODE A PL	NUMBER 7005434-0-0	REV. C	
CHECKED		DATE	FOR		ASSY. NO.			

This drawing and specifications, herein, are the property of Digital Equipment Corporation and shall not be reproduced or copied or used in whole or in part as the basis for the manufacture or sale of items without written permission.

LEGEND	
NUMBER	VARIATION
7005435-1	60 HZ
7005435-2	50 HZ



PUNCH REWORK

- STEP 1: REMOVE CHROME PLATED TAPE GUIDE AND CUTOFF STRIP BY REMOVING TWO (2) SLOTTED HEAD SCREWS.
- STEP 2: ASSEMBLE TAPE FEED CHUTE USING SAME SCREW HOLES AND SCREWS THAT WERE USED FOR HOLDING TAPE GUIDE AND CUTOFF STRIP
- STEP 3: REMOVE EXISTING CHAD TUBE SUPPLIED BY VENDOR. REPLACE WITH ITEM 1 CHAD TUBE & SECURE WITH LOCKTITE. ALLOW AMPLE TIME TO DRY.

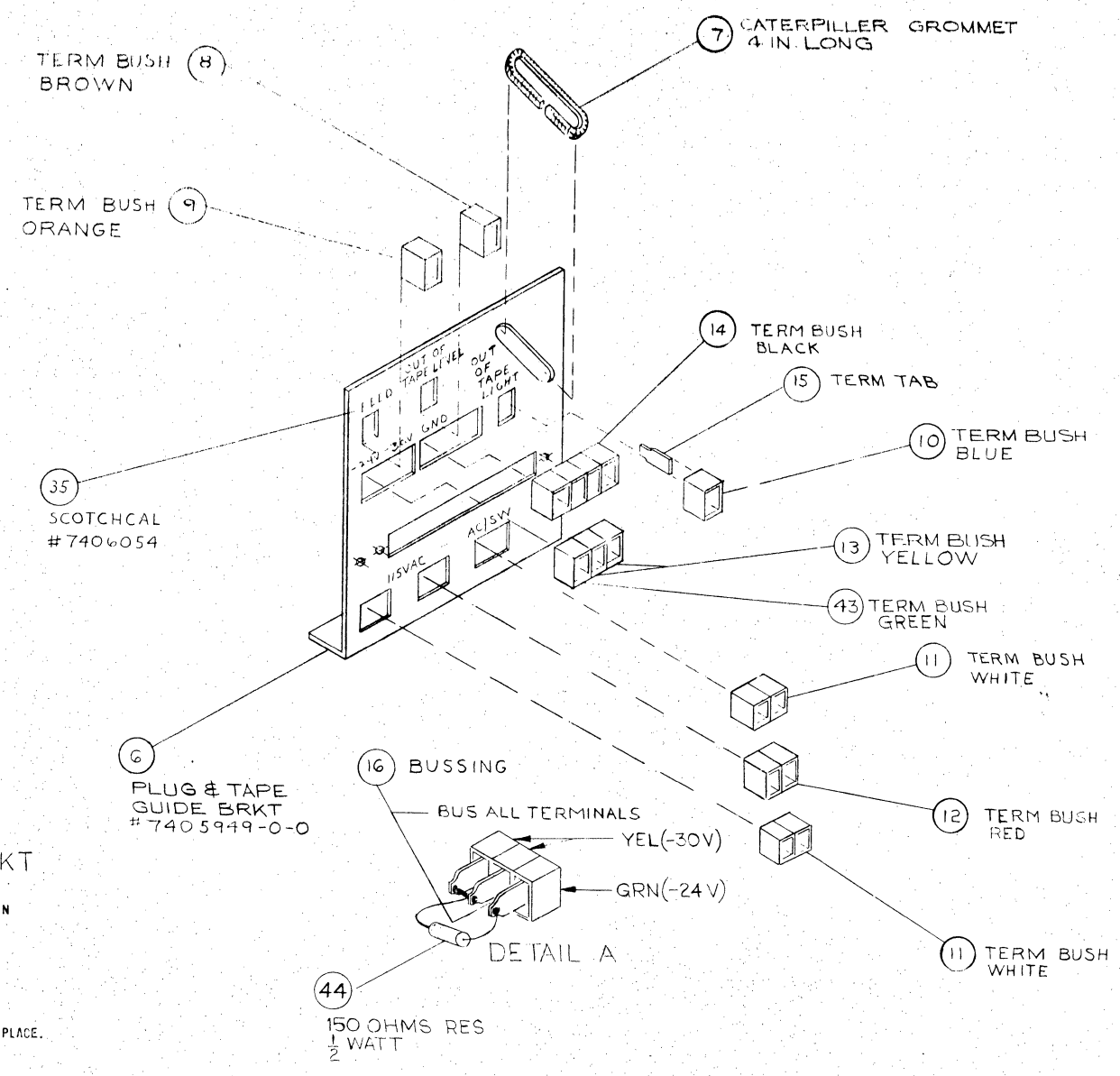
REV	DESCRIPTION	DATE
1	ECO # 308 A	12-5-67
2	DELETED ITEMS NO. 1, 2	
3	ADDED ITEMS NO. 3, 4	8-31-68
4	ECO # 318 B	7-12-67
5	ADDED ITEMS #1, 4, 2	
6	ECO # 324 B C	
7	CHG. STEP 3	12-27-67
8	ECO # 338 D	1-10-68
9	WAS YEL #13 WAS MED	3-23-68
10	ECO # 339 E	1-10-68
11	REINSTATED #1	
12	DEL ITEM #39	
13	ECO # 345 F	
14	ADDED LEGEND	
15	ADDED LEGEND	5/23/68
16	ECO # 346 G	
17	ECO # 347 H	
18	ECO # 348 I	
19	ECO # 349 J	
20	ECO # 350 K	
21	ECO # 351 L	
22	ECO # 352 M	
23	ECO # 353 N	
24	ECO # 354 O	
25	ECO # 355 P	
26	ECO # 356 Q	
27	ECO # 357 R	
28	ECO # 358 S	
29	ECO # 359 T	
30	ECO # 360 U	
31	ECO # 361 V	
32	ECO # 362 W	
33	ECO # 363 X	
34	ECO # 364 Y	
35	ECO # 365 Z	

UNLESS OTHERWISE SPECIFIED	
DIMENSION IN INCHES	
DECIMALS	FRACTIONS
± .005	± 1/64
ANGLES ± 0°30'	
FINAL SURFACE QUALITY	
REMOVE BURRS AND BREAK SHARP CORNERS	
MATERIAL	FINISH
11	11

QTY.	DESCRIPTION	PART NO.	ITEM NO.
PARTS LIST			
DRN. <i>[Signature]</i>		DATE <i>4/11/67</i>	DIGITAL EQUIPMENT CORPORATION <small>MAYFIELD MASSACHUSETTS</small>
CHK'D. <i>[Signature]</i>	DATE <i>6/13/67</i>	TITLE	
ENG. <i>[Signature]</i>	DATE <i>6/13/67</i>	PUNCH ASSY	
PROL. ENG. <i>[Signature]</i>	DATE <i>6/13/67</i>		
PROD. <i>[Signature]</i>	DATE <i>6/13/67</i>		
FIRST USED ON		SIZE CODE	NUMBER
D-DA-PC01-0-0		D	AD 7005435-0-0
SCALE <i>NONE</i>		DIST.	REV. <i>J</i>
SHEET <i>1</i> OF <i>4</i>			

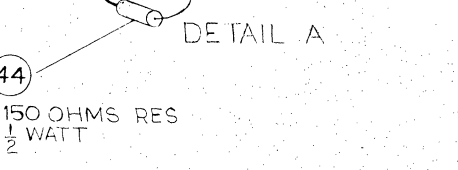
This drawing and specifications, herein, are the property of Digital Equipment Corporation and shall not be reproduced or copied or used in whole or in part as the basis for the manufacture or sale of items without written permission.

0-0-384500 17 D 2



PLUG & TAPE GUIDE BRKT

- STEP 1: INSERT #15 (SOLDER TAB) 16 PLACES, IN ALL TERM BUSHINGS.
- STEP 2: BUS TERM BUSH PER DETAIL "A" WITH #14 BUS WIRE. SOLDER IN PLACE AND CLIP EXCESS FROM ENDS.
- STEP 3: INSERT EACH GROUP INTO IT'S PROPER CUTOUT AS INDICATED ON DUG. USE SUFFICIENT HAND PRESSURE TO CLIP IN PLACE.
- STEP 4: #7 (GROMMET TO BE CEMENTED IN PLACE).



REV	
CHG	
CHK	

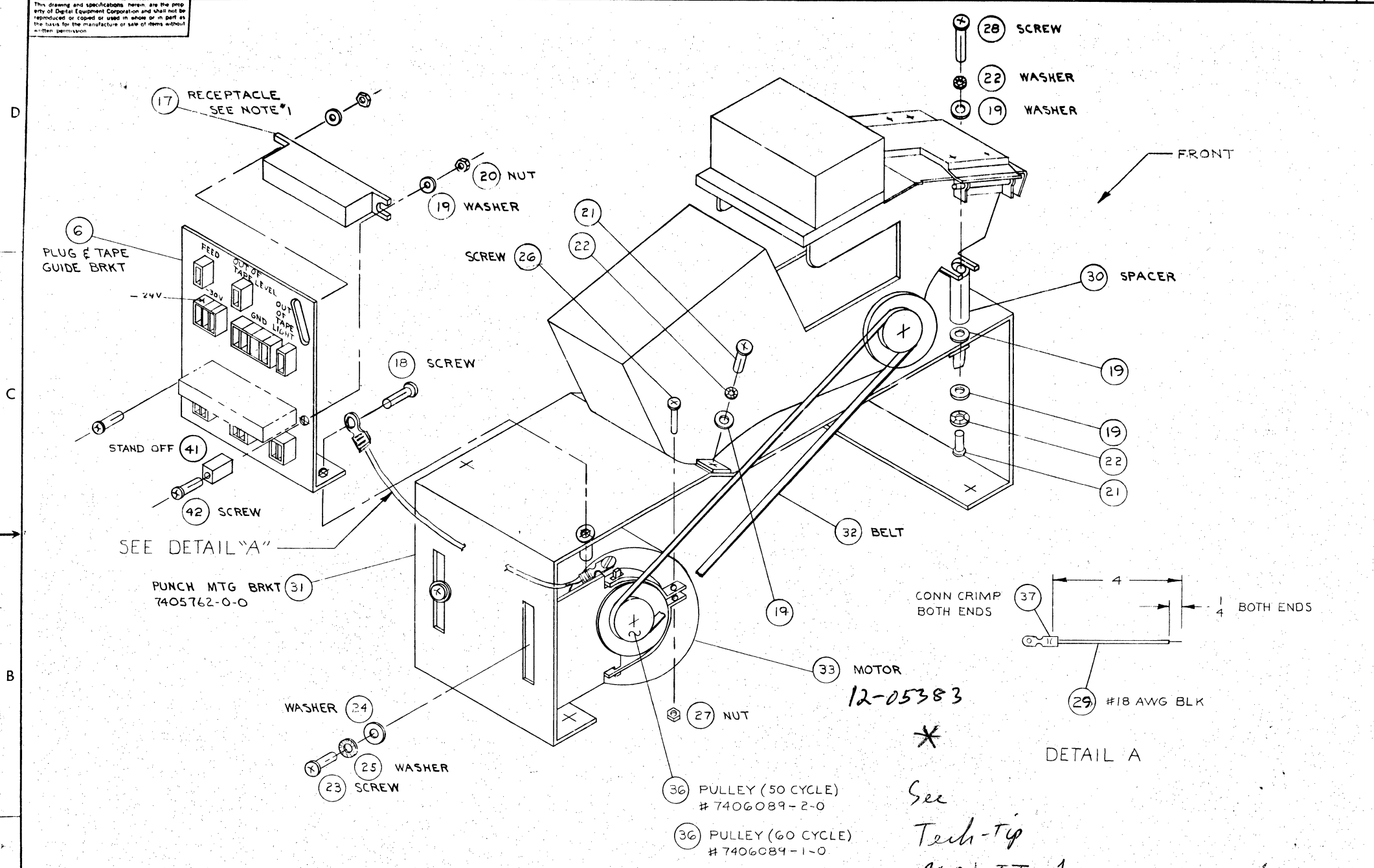
UNLESS OTHERWISE SPECIFIED		DRN	DATE	PARTS LIST	
DIMENSION IN INCHES		CHK'D	DATE	digital EQUIPMENT CORPORATION	
TOLERANCES		ENG	DATE	MAYNARD, MASSACHUSETTS	
DECIMALS	FRACTIONS	PROJ. ENG.	DATE	TITLE	
±.005	± 1/64	PROD.	DATE	PUNCH ASSY	
FINAL SURFACE QUALITY		FIRST USED ON		SIZE CODE	NUMBER
REMOVE BURRS AND BREAK SHARP CORNERS		D-UA-PC01-0-0		D AD	7005435-0-0
		FINISH	SCALE NONE	SHEET	PCV.
		///	SHEET 2 OF 4		J

REV J
NUMBER 7005435-0-0
SIZE CODE D AD

This drawing and specifications herein are the property of Digital Equipment Corporation and shall not be reproduced or copied or used in whole or in part as the basis for the manufacture or sale of items without written permission.

0-0-SE4500L 04 2

NOTES:
 1. #17 (RECEPTACLE) IS REWIRED TO #5 (PUNCH) WHEN IT IS PURCHASED FROM VENDOR



- PUNCH MTG
- STEP 1: ATTACH PUNCH TO #31 PUNCH MTG BRKT ON REAR SIDE USING HDW. #21, 22 & 19 ON FRONTSIDE USING HDW. #21, 22, 28 & 19.
 - STEP 2: INSTALL #33 MOTOR USING HDW. #23, 24 & 25 TO ATTACH TO #31 PUNCH MTG BRKT BEING CERTAIN THAT MOTOR SHAFT IS ON LEFT SIDE OF PUNCH BRKT WHEN VIEWED FROM FRONT OF BRACKET. FASTEN MOTOR BRKTS IN PLACE WITH HDW #26 & 27. PREPARE GRD STRAP WIRE PER DETAIL A ATTACH ONE END TO TOP OF MOTOR USING MOTOR SCREW LET OTHER END HANG FREE.
 - STEP 3: FASTEN #17 RECEPTACLE (WHICH IS WIRED TO PUNCH) TO #6 TAPE GUIDE BRKT USING #18 SCREW & #19 WASH & #20 NUT.
 - STEP 4: FASTEN #6 TAPE GUIDE TO #31 PUNCH MTG BRKT USING SCREW #18 WASH #22, ATTACH OTHER END OF GRD STRAP USING #18 SCREW
 - STEP 5: ATTACH PULLEY #36 TO MOTOR #33 THEN ATTACH BELT #32 ADJUST TENSION BY LOOSENING MOTOR MOUNT SCREW, AFTER ADJUSTING RETIGHTEN SCREWS.

REV	
CHG	
NO	

*This is GE # 5KPM49E G-19φ
 the 5-wire version, NOT interchangeable @ the PC04/PC05 motor, 12-φ 9365, which is 4-wires and is the*

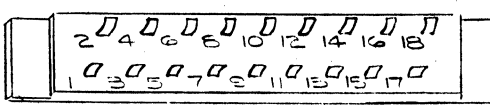
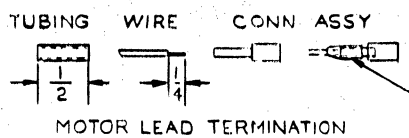
UNLESS OTHERWISE SPECIFIED	DATE
DIMENSION IN INCHES	4/13/67
TOLERANCES	DATE
DECIMALS FRACTIONS ANGLES	8/12/67
± .005 ± 1/64 ± 0°30'	DATE
FINAL SURFACE QUALITY	DATE
REMOVE BURRS AND BREAK SHARP CORNERS	DATE

QTY.	DESCRIPTION	PART NO.	ITEM NO.
PARTS LIST			
digital EQUIPMENT CORPORATION		MAYNARD, MASSACHUSETTS	
TITLE			
PUNCH ASS'Y.			
MATERIAL	FIRST USED ON	SIZE CODE	NUMBER
—H—	D-UR-PC01-0-0	DJAD	7005435-0-0
FINISH	SCALE NONE	DIST.	REV. J
—H—	SHEET 3 OF 4		

Drawing and specifications, herein, are the prop-
erty of Digital Equipment Corporation and shall not be
reproduced or copied or used in whole or in part as
the basis for the manufacture or sale of items without
written permission.

8 7 6 5 4 3 2 1

REV. NO. 2
PART NO. 7005435-0-0
SIZE CODE D



VIEW-A
CONN BLOCK

#22 AWG BRN 8 IN LG
FROM BRN TERM BUSH
TO N.O. (TAPE SW) ON PUNCH

#22 AWG BLU 2 IN. LG FROM
BLU TERM BUSH TO PIN #16
ON CONN. BLOCK

CAPACITOR SHOWN IN PHANTOM
BECAUSE LEADS ARE NOT
CONNECTED TO CAPACITOR
UNTIL FINAL ASSY. D-UA-PC01-0-0

CAPACITOR (34)
FROM RED
TO BLK. TERM
BUSHING

SEE VIEW B

#22 AWG YEL 2 IN LG FROM
YEL TERM BUSH TO PIN
#17 ON CONN. BLOCK

MOTOR LEAD (RED)

SEE DETAIL A

#22 AWG RED 2 IN. LG FROM
RED TERM BUSH TO PIN #4
ON CONN. BLOCK

PUNCH MOTOR

WIRES FROM PUNCH

#22 AWG BLK 2 IN. LG FROM BLK
TERM BUSH TO PIN #3 ON
CONN. BLOCK

#44 RESISTOR FROM YEL
TO GRN TERM BUSHING

CONN BLOCK
SEE VIEW A

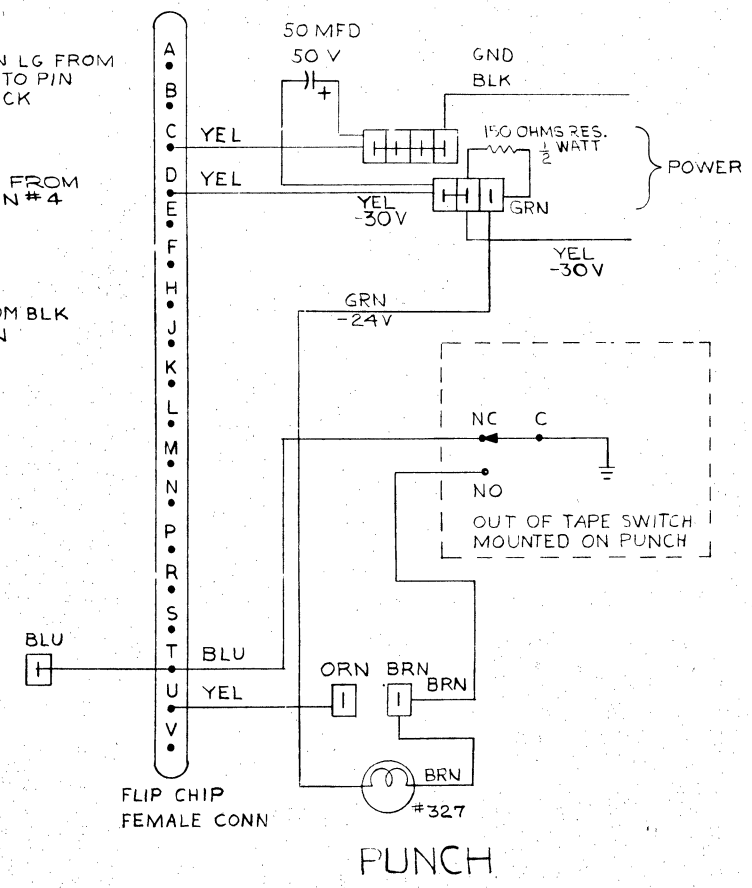
MOTOR LEAD (BLU)

MOTOR LEAD (GRN)

MOTOR LEAD (YEL)

MOTOR
LEAD (WHT)
#18 AWG WHT
10" LG. TERM
ON BOTH ENDS
SEE DETAIL A

VIEW B



PUNCH

REV.	
CHG	
CHK	

UNLESS OTHERWISE SPECIFIED	DRN.	DATE
UNLESS OTHERWISE SPECIFIED	CHK'D.	DATE
DIMENSION IN INCHES	ENR.	DATE
TOLERANCES	PROJ. ENR.	DATE
DECIMALS FRACTIONS ANGLES	PROD.	DATE
±.005 ± 1/64 ± 0°30'		
FINAL SURFACE QUALITY		
REMOVE BURRS AND BREAK SHARP		
CORNERS		

FIRST USED ON	D-UA-PC01-0-0
SCALE	NONE
SHEET	4 OF 4

PARTS LIST	
QTY.	DESCRIPTION
	PART NO.
	ITEM NO.
DIGITAL EQUIPMENT CORPORATION MAYFAC, MARIETTA, GA.	
TITLE	
PUNCH ASSY	
SIZE CODE	NUMBER
D AD	7005435-0-0
REV.	J

8 7 6 5 4 3 2 1

POP-8 I

PR/PP8I

M705 in H,526

M715 in H,527

M714 in H,528

M440's

G948 for POS. logic

(G944 @ W440's in
neg. sys.)

Punch Cable in C41 (W477 - W437)

Reader Cable in D41 (W477 - W433)