

TITLE: Regulog II - MULTIPLE REGRESSION 3

AUTHOR: James N. Boles
University of California
Berkeley, California

DATE:

ABSTRACT:

DISCLAIMER:

"The authors of this program material, the POOL organization and Royal McBee believe this program to be correct; however, they bear no responsibility, financial or otherwise, for errors resulting from its use. This program is distributed only to individual and installation members of POOL. Further distribution of this manual and accompanying tapes for use by non-members is prohibited."

TITLE: Regulog II

AUTHOR: James N. Boles

T A B L E O F C O N T E N T S

I.	General Description	1
II.	Storage	3
III.	Mathematical-Statistical Statement of Procedure	4
IV.	Operating Instructions	7
V.	Calling Sequences for Selected Regulog II Subroutines	12
VI.	Flow Chart	14
VII.	Program constants for two variations	
	a. Regression starting with $X'X$ and ΣX	23
	b. Regression starting with \bar{X} , S , and R	24
VIII.	Data Format	26
IX.	Format for Instruction Constants	
	a. Logarithmic Transformation	27
	b. Polynomial Transformation	28
	c. No log or poly transformation	30
X.	Program	31
XI.	Test Problem	63

TITLE: Regulog II

AUTHOR: James N. Boles
University of California
Berkeley, California

DATE:

I. General Description

The objective of this program is to compute least squares estimates of the parameters of a multiple regression equation and related statistics for an N_2 by N_1 matrix, X , of N_2 observations on each of N_1 variables, $N_1 \leq 20$. In particular, the following statistics are computed and printed:

$$i, j = 0, 1, 2, \dots, (N_1-1)$$

$$t = 1, 2, \dots, N_2$$

- (a) $\sum X_{it}$;
- (b) $X'X = [(\sum X_{it}X_{jt})]$;
- (c) Arithmetic means, \bar{X}_i ;
- (d) Standard deviations, S_i ;
- (e) A square matrix of correlation coefficients, $R = [(r_{ij})]$;
- (f) R^{-1} ;
- (g) The constant term of the regression equation, b_0 ;
- (h) A set of (N_1-1) regression coefficients, $b_{0.j}$, each with its associated standard error, and t ratio;
- (i) The sum of squared residuals;
- (j) The coefficient of multiple determination, R^2 and the coefficient of multiple correlation, R ;
- (k) Predicted values and residuals.

Provision is made in the data input subroutine: (a) to transform any subset of the variables to logarithms, or (b) to generate up to 15 additional variables by forming squares and/or cross products of the

variables on tape, or (c) to use the data on tape with no transformation. Options (a) or (b) are often used to generate a curvilinear regression surface.

For either option (a) or (b) the transfer control switch is used to control a printing subroutine. If the transfer control switch is down, the transformed variables are printed, if the transfer control switch is up, the transformed variables are not printed.

If the dependent variable has been transformed to logarithms, the program will also compute and print the antilogarithms of predicted values and residuals.

All of the regression statistics are computed from the elements \bar{X}_i , S_i , and R^{-1} , where R is a correlation matrix including the dependent variable. The reasons for using the augmented correlation matrix are as follows:

- (a) At times, only the correlation matrix is required and the first part of this program can be used for this with no modification necessary.
- (b) If any of the variables are highly correlated, the $X'X$ matrix may have an almost vanishing determinant. This kind of difficulty may be spotted as soon as the correlation matrix is printed.
- (c) No additional matrix multiplication is required to obtain regression coefficients and/or multiple correlation coefficients.
- (d) The variables are treated symmetrically. This program does not contain this feature at present, but it is possible to modify it so that each variable may be regressed on the remaining variables with all of the computations derived from the same \bar{X}_i , S_i , and R^{-1} .

(e) Even though the floating point interpretative routine is designed to accommodate numbers of widely varying magnitudes, there may be an advantage in the matrix inversion routine of scaling all the numbers to the same order of magnitude. At least it is somewhat easier to compare the accuracy of matrix inversion if the matrices to be inverted have elements of the same order of magnitude.

A large part of this program is made up of rather short subroutines, making it somewhat easier to analyze and making it convenient to use various subroutines in different ways. The subroutines are located in tracks 32 through 39 and from 4246 to 4611. The control program starts at 4000 and runs to 4245.

A rather liberal use is made of the alphanumeric subroutine, 19.0, and an automatic printing subroutine so that little operator attention is necessary once the problem has started.

II. Storage

A. Program Input Routine, 10.4 0000-0263

B. 24.1 and 24.1 Subroutines

(1)	24.1	E.R.F.P.	0300-1363
(2)	11.5	Input	1400-2063
(3)	12.5	Output	2100-2463
(4)	18.2	Logarithm	2819-2863
(5)	17.2	Exponential	2900-3063
(6)	30.0	Matrix Inversion	2500-2731
(7)	19.0	Alphanumeric	3100-3163

C. Regulog Subroutines

(1)	Printing	3200-3234
(2)	Clearing	3235-3249
(3)	Printing square matrix by rows	3250-3305
(4)	Data input and transformation	3306-3422
(5)	Formation of ΣX_i and $X'X$	3423-3522
(6)	Formation of S_{ij} , \bar{X}_i , S_i , R_{ij}	3523-3718
(7)	Regression statistics	3719-3958
(8)	Predicted values and residuals	4246-4449
(9)	Antilogs of predicted values and residuals	4450-4463
		4545-4562
(10)	Binarization of manual printing constants	4500-4544

D. Control Program	4000-4245
E. Constants	
(1) Problem specification	2732-2806
(2) Other constants, fixed point	2807-2818
	4600-4611
floating point	6248-6253
F. Temporary Working Locations	
(1) Matrix inversion	6132-6207
(2) Other	6254-6261
	4626-4635
G. Data and Results	
(1) Data	6132-6207
(2) Regression coefficients, standard errors, t ratios	4636-4823
(3) Arithmetic means	4824-4863
(4) Standard deviations	6208-6247
(5) X'X, R, R ⁻¹	4900-6131

III. Mathematical-Statistical Statement of Procedure

A. Definitions:

N_1 = total number of variables

N_2 = number of observations

$$i, j = 0, 1, 2, \dots, (N_1 - 1)$$

$$t = 1, 2, \dots, N_2$$

$$(1) \bar{X}_i = \frac{1}{N_2} \sum_{t=1}^{N_2} X_{it}$$

$$(2) S_{ij} = \frac{1}{N_2} \sum_{t=1}^{N_2} (X_{it} - \bar{X}_i)(X_{jt} - \bar{X}_j) = \frac{1}{N_2} \left\{ \sum_{t=1}^{N_2} X_{it} X_{jt} - \left(\sum_{t=1}^{N_2} X_{it} \right) \left(\sum_{t=1}^{N_2} X_{jt} \right) \right\}$$

if $i = j$, $S_{ij} = S_{ii} = S_i^2$

$$(3) r_{ij} = \frac{S_{ij}}{S_i S_j}$$

B. Statistical Model (The following procedures are based in part on Schultz, Henry, The Theory and Measurement of Demand, The University of Chicago Press, Chicago, 1938, Appendix C.)

$$X_{ot} = B_o + B_{o.1}X_{1t} + \dots + B_{o.N_1-1}X_{(N_1-1),t} + e_t$$

$$t = 1, 2, \dots, N_2$$

$$\text{Let } E = \begin{bmatrix} (e_t) \\ (N_2 \times 1) \end{bmatrix}$$

$$\text{Then: } \frac{1}{E} = \epsilon (E E') = \sigma^2 I$$

The objective is to develop least squares estimates of the regression coefficients, estimates of their standard errors, t ratios, and selected interpretive statistics.

C. Computational Formulae

$$\text{Let } P = R^{-1} = [P_{ij}]$$

$$i, j = 1, 2, 3, \dots, N_1$$

(1) Least squares estimates of regression coefficients

$$b_o = \bar{X}_o - b_{o.1}\bar{X}_1 - \dots - b_{o.N_1-1}\bar{X}_{N_1-1}$$

$$b_{o.1} = - \frac{S_o}{S_j} \frac{P_{12}}{P_{11}}$$

$$b_{o.j} = - \frac{S_o}{S_j} \frac{P_{1, j+1}}{P_{11}}$$

(2) Standard errors

$$S_{b_{o.1}} = \frac{1}{\sqrt{N_2 - N_1}} \frac{S_o}{S_1} \frac{1}{P_{11}} \sqrt{P_{11}P_{22} - P_{12}^2}$$

$$S_{b_{o.j}} = \frac{1}{\sqrt{N_2 - N_1}} \frac{S_o}{S_j} \frac{1}{P_{11}} \sqrt{P_{11}P_{j+1, j+1} - P_{1, j+1}^2}$$

(3) t ratios

$$t_{o.1} = \frac{b_{o.1}}{S_{bo.1}}$$

$$t_{o.j} = \frac{b_{o.j}}{S_{bo.j}}$$

(4)
$$R^2 = \frac{P_{11}^{-1}}{P_{11}}$$

(5) Sum of squared residuals

$$S = N_2 S_o^2 (1-R^2)$$

(6) Predicted values

$$X_o' = Y' = b_o + b_{o.1}X_1 + \dots + b_{o.N_1-1}X_{N_1-1}$$

(7) Residuals

$$X_o - X_o' = Y - Y'$$

(8) Steps (1) through (7) assume that R^{-1} has already been calculated. This is done in three parts:

(a) Let $X_t = \begin{matrix} [X_{it}] \\ (N_1 \times 1) \end{matrix}$

$$X'X = \sum_{t=1}^{N_2} X_t X_t'$$

The data are entered one line at a time, $X_h X_h'$ is computed and added to

$$\sum_{t=1}^{h-1} X_t X_t' \quad \text{to form an } (N_1 \text{ by } N_1) \text{ matrix.}$$

(b) The $X'X$ matrix is then transformed to

$$S = [(S_{ij})] \text{ and}$$

(c) to
$$R = \left[\left(\frac{S_{ij}}{S_i S_j} \right) \right]$$

IV. Operating Instructions

A. Problem Specification.-- The particular problem is specified by a set of fixed point constants entered as instructions in 2732 on. Examples are given of each of three options: (a) logarithmic transformation, (b) polynomial transformation, or (c) no transformation. The first eight constants have the same meaning for each variation.

- (1) The total number of variables including any polynomial terms to be generated, N_1 .
- (2) $2 N_1$
- (3) N_1^2
- (4) $2 N_1^2$
- (5) The total number of observations. Since these constants are entered in the form of instructions, this format should only be used if $N_2 \leq 63$. If N_2 were 147, the program input routine would transform 1 and 47 separately and the result would not be the binary equivalent of 147 at 29. If $N_2 > 63$, it should be entered as a hexadecimal word. One procedure is to convert 147 to its binary equivalent, add two zeros on the right to allow for the spacer bit and the 30th bit, and convert the resulting sequence to hexadecimal.

Example: $N_2 = 147$ at 29

128	64	32	16	8	4	2	1
1	0	0	1	0	0	1	1
(0010)		(0100)				(1100)	
2		4				J	

- (6) A specification of the number of columns desired for printing.

- (7) A constant expressing the choice of logarithmic transformation, a "1" indicating that at least one variable is to be transformed, a "0" indicating no logarithmic transformation. Any subset or all the data may be transformed.
- (8) A similar constant expressing the choice of a polynomial transformation, a "1" indicating at least one polynomial term to be generated, a "0" indicating no polynomial transformation. Options (4) and (5) are mutually exclusive.
- (9) For logarithmic transformations the locations from 2740 to $2740 + N_1$ must be used as follows: a "1" indicates that the corresponding variable should be transformed, a "0" indicates that the corresponding variable should not be transformed.
- (10) For polynomial transformations the locations from 2741 to 2806 are used to specify up to 15 pairs of variables to form product terms. Location 2740 is used to specify the number of such terms to be generated. Following this, all that needs to be filled in are the actual pairs desired. Order is not important. However, the product terms will be generated in the same order as they are listed. Because of the fact that each number requires two locations, the variables should be identified for this purpose by even numbers. Thus, the second variable times the third variable is indicated by Z0002, Z0004.
- (11) Certain floating point constants are required. These are inserted just prior to the data and are read in along with the first line of data. These constants are located in 6248-6255 and consist of
- (a) "1"
 - (b) N_2 = number of observations
 - (c) N_2^2
 - (d) $N_2 - N_1$ = adjustment for degrees of freedom

(12) Normally, fixed point constants, floating point constants and data will all be on the same tape. If the "stop and transfer to 4000" follows the fixed point constants, the tape is inserted in the tape reader and the usual routine for loading a program is followed: one operation, clear counter, normal and start compute. At the stop and transfer, a start compute is necessary.

Since the data are read one line at a time, they are always preceded by the same code word (80006132) and followed by (exit). This, of course, is the standard format for 24.1 floating point input. The first variable is treated as the dependent variable.

B. Programmed Stops.-- There are a number of breakpoint 4 stops scattered through the control program primarily to aid debugging the program. During almost all operations, breakpoint 4 should be depressed.

A breakpoint 8 stop follows the computation of R so that if the correlation matrix is all that is wanted, breakpoint 4 only should be depressed.

A breakpoint 4 also follows the subroutine to invert the R matrix and compute a check product.

A stop follows the completion of the regression statistics. In order to compute predicted values, it is necessary to read the data a second time. Consequently, at this point the tape must be placed in the tape reader so that the first line of data will be read as the tape reader is set in motion.

A breakpoint 16 stop follows the subroutine to compute predicted values and residuals. If antilogs of predicted values and residuals are desired, breakpoint 16 may be depressed any time after the data starts through the second time.

SUMMARY

<u>Location</u>	<u>Breakpoint</u>	<u>Reason</u>
4121	0800	Follows R matrix
4245	0000	To replace tape for computing predicted values
4449	1600	Follows predicted values and residuals
4562	0000	Problem finished

Normal operation: breakpoints 4 and 8 depressed.

There are no other programmed stops except those provided for in 24.1, the floating point interpretive routine.

If breakpoints 4 and 8 are depressed, the normal operation would be:

- (a) Load fixed point constants.
- (b) Start compute.
- (c) After R^2 and R are printed, a stop will occur at 4245. After tape is reloaded so that data is just in front of the tape reader, press start compute.
- (d) After predicted values, residuals and S are printed, a stop will occur at 4449. If the dependent variable is in logarithms and antilogs are desired, press start compute.

C. Optional Printing. -- If either transformation is used, the transfer control switch is used to control a printing subroutine. If the transfer control switch is down, and one or the other transformation is employed, all of the variables will be printed in their final form. If this option is wanted at all, it would ordinarily be used only once, either during the original read in or during the computation of predicted values and residuals.

D. Alternative Uses. -- (1) As mentioned earlier, the first part of the program may be used to compute means, standard deviations, and the correlation matrix for a set of variables. Only breakpoint 4 should be depressed and the computer will stop on breakpoint 8 located at 4121. (2) In some cases, it is desired to use subsets of the data in separate regression

analyses and then to combine these subsets. In this case, much computing time is saved by adding the various ΣX and the various $X'X$ matrices, writing a short program to load them into the indicated locations modifying the problem specifications and starting at 4050. Breakpoints 4 and 8 should be depressed. After the problem is completed, each separate tape can be run and predicted values, residuals, and sum of squared residuals computed for each subset of the data. The procedure would be to read the instruction constants as though starting the problem, then manually stop and transfer to 4246 to compute predicted values and residuals for the combined regression equation. An example is shown just prior to the program instruction coding sheets of the program instructions required for starting a problem when ΣX and $X'X$ have already been computed. (3) If \bar{X}_i , S_i , and R have already been computed, they can be loaded in the proper locations and the problem started at 4052. An example is shown just prior to the program instruction coding sheets of the program instructions required for starting the problem at this point. (4) Providing the variables to be dropped are either at the extreme right of the original set or are polynomial terms, variations of the original problem can be run using the same tape but using appropriately modified instruction constants and floating point constants. Since the floating point constants enter with the first line of data, it is appropriate to copy the first line of data with the new constants, start the problem and, after the first line of data has been read, go into "one op," change tapes and then proceed. The old tape should be marked so that the second line of data is under the tape reader.

E. Manual Printing.--A binarization subroutine is used in conjunction with the printing subroutine to print manually any 24.1 floating point data. The initial address and number of words to be printed are entered manually.

If desired, the column format can be controlled by using a start fill instruction with the program input routine to load k into 3233.

The manual printing subroutine is located in 4500 on. With manual input down on the Flexowriter, press one op, clear counter, normal, and start on the console. Then type .0004500 and depress start compute twice on the Flexowriter. At this point, a carriage return is executed and the letter "i" is printed followed by a space. At this point, type in the initial address and press start compute. A carriage return is executed and the letter "n" is printed followed by a space. At this point, type in the number of words to be printed and press start compute. After the desired number of words is printed, the program automatically loops, prints "i" and is ready for the next sequence.

V. Calling Sequences for Selected Regulog II Subroutines

A. Printing

```

B xxxx      (Initial address)
Y 3212
B xxxx      (k = number of columns)
C 3233
B xxxx      (n = number of words)
C 3234
R 3231
U 3200 or 3202 or 3204
    
```

The order of the first three pairs is immaterial. The choice of the U command depends on the number of carriage returns desired prior to printing.

B. Clearing

```

B xxxx      (Initial address)
Y 3237
Y 3238
B xxxx      (Number of words)
C 3249
R 3248
U 3235
    
```

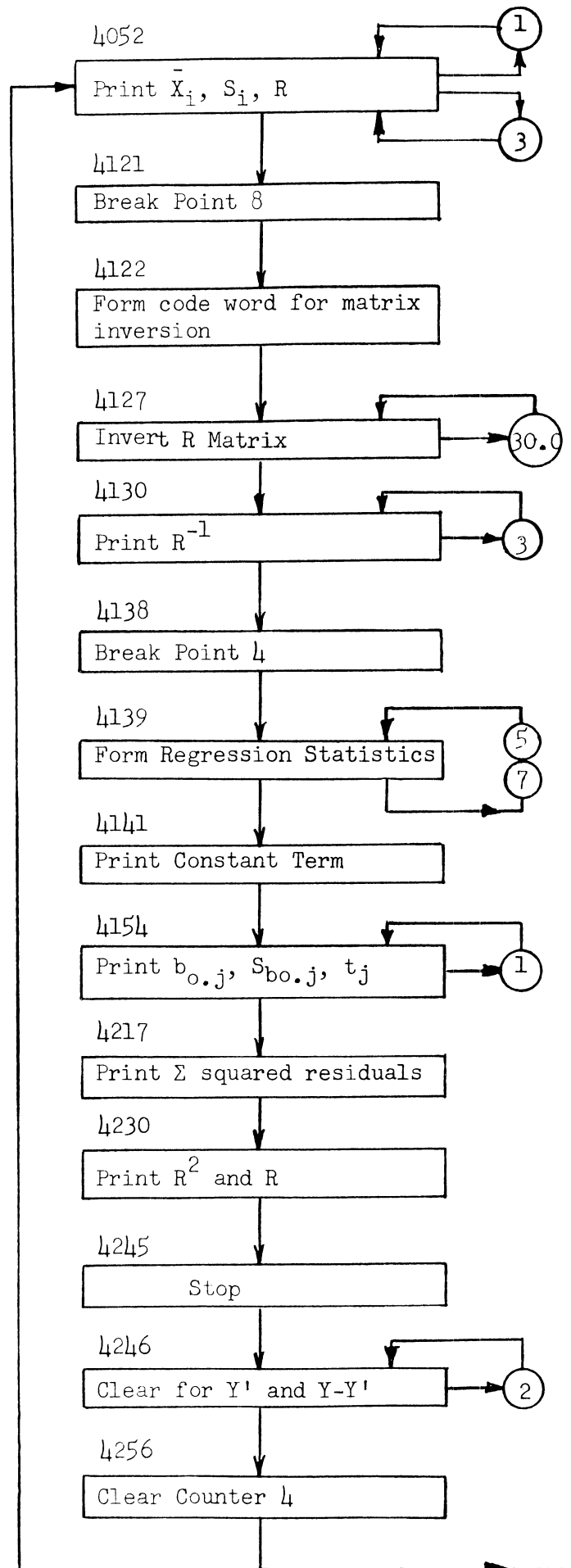
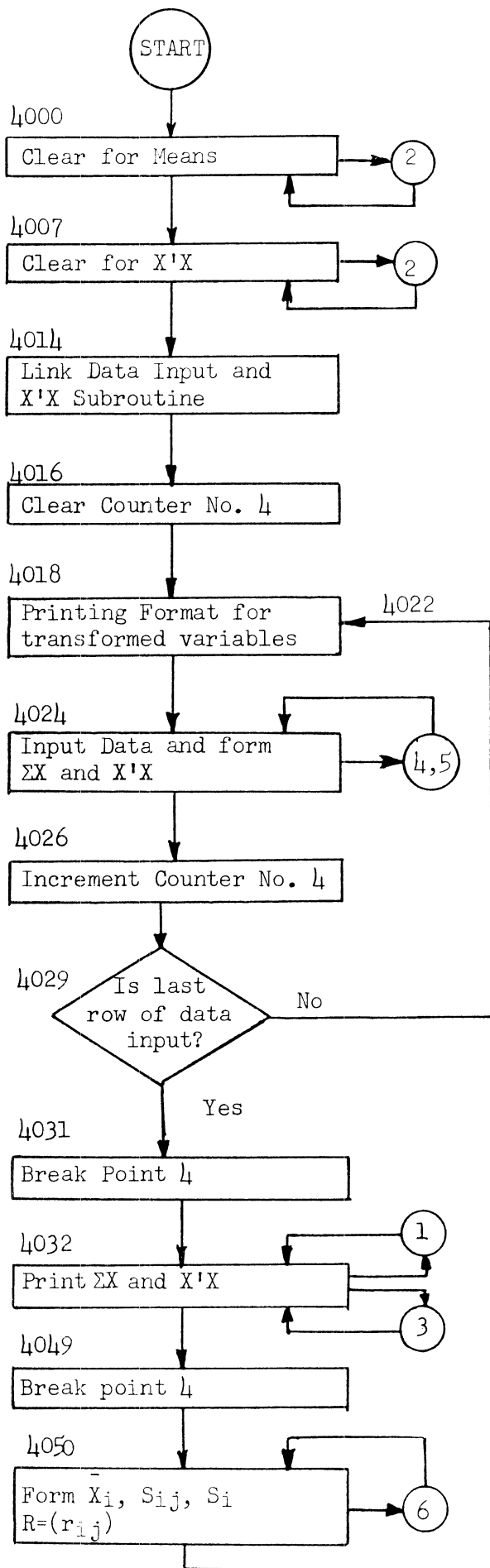
C. Data Input and Transformation

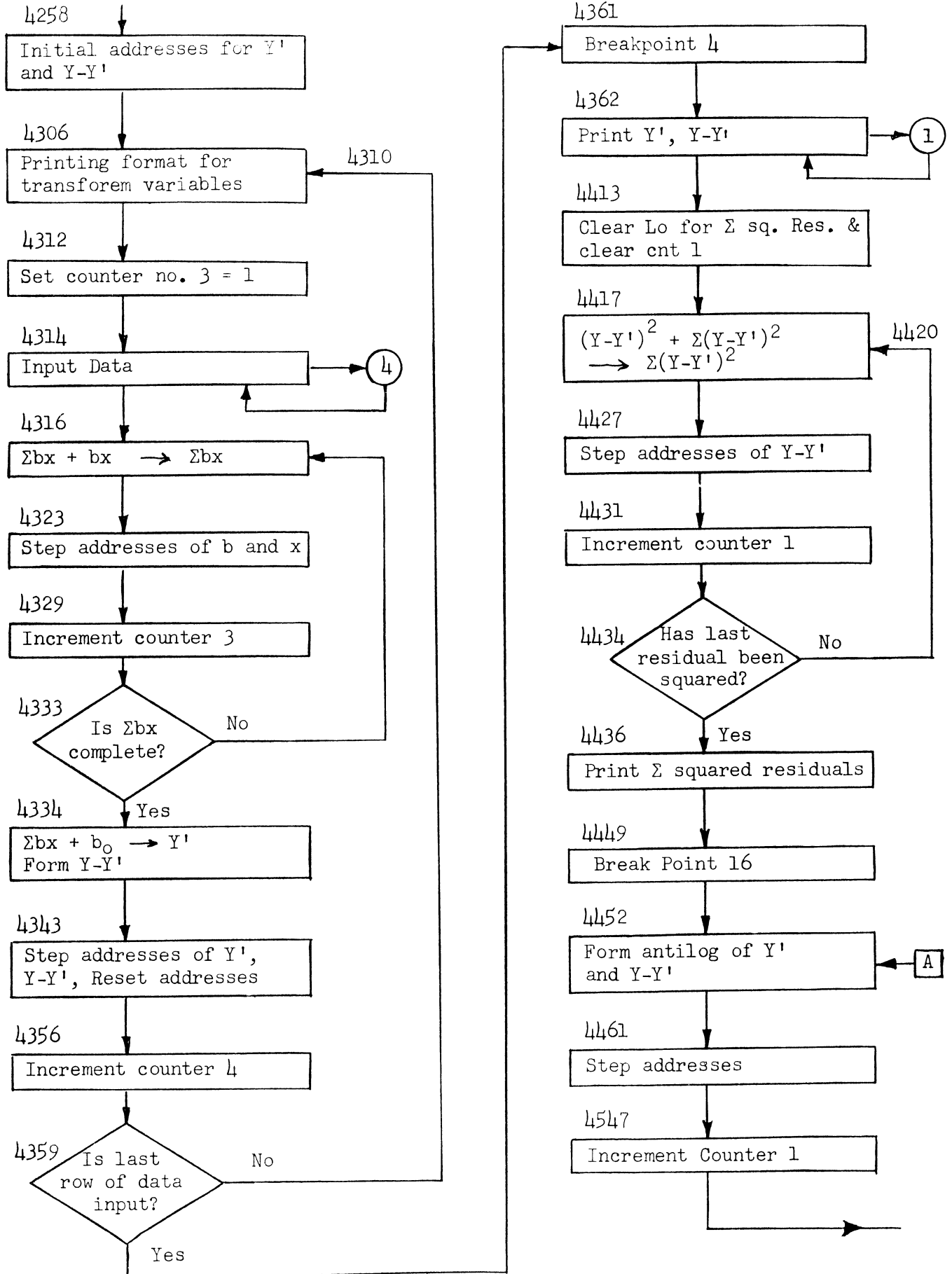
B 2737	(k)	Printing
C 3233		format
B 2732	(N ₁)	for
C 3234		transformed
B 2807	(6132)	variables
Y 3212		
R 3422		
U 3306		

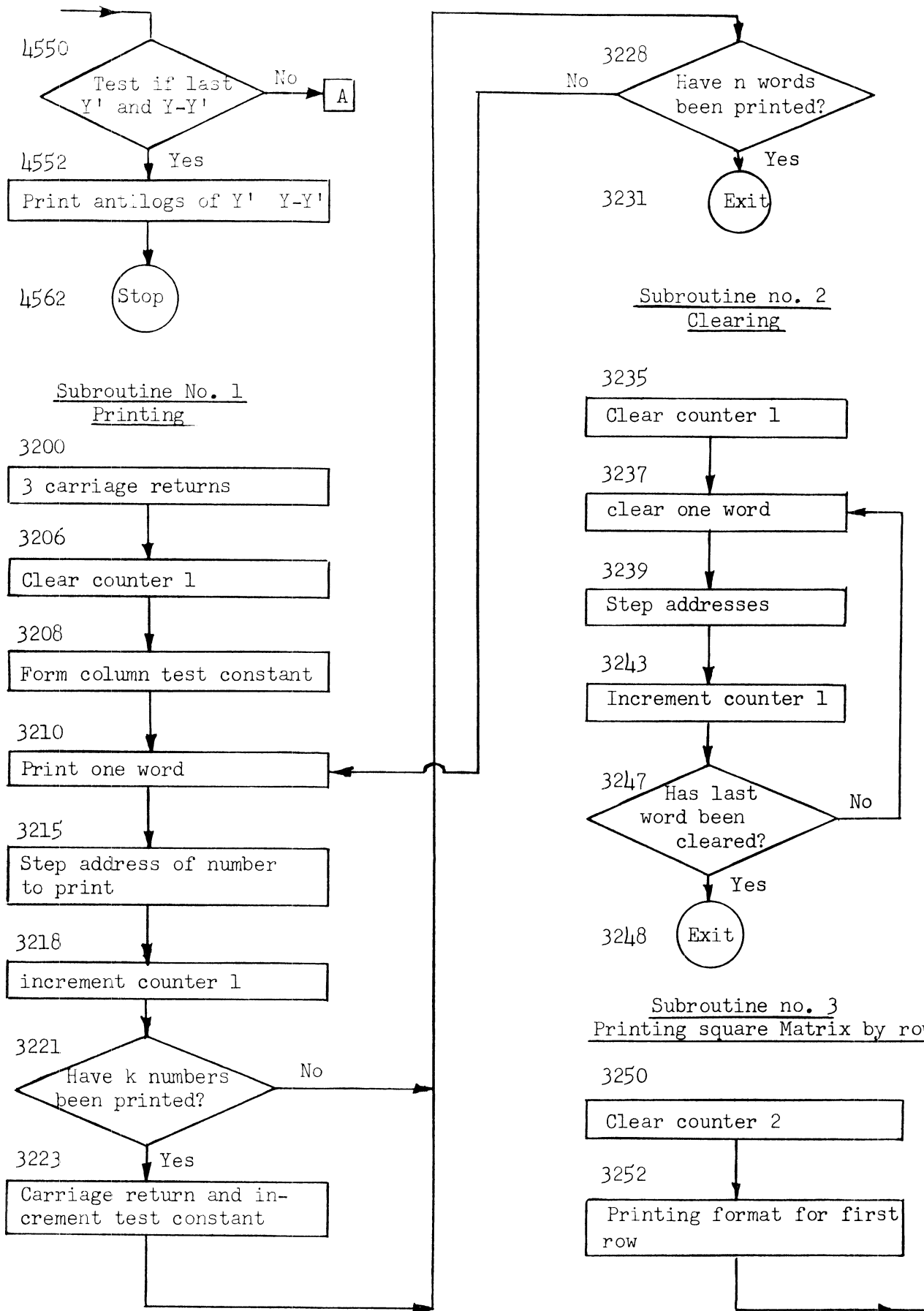
Note: Use last four commands each time since the initial address is modified for each line of data.

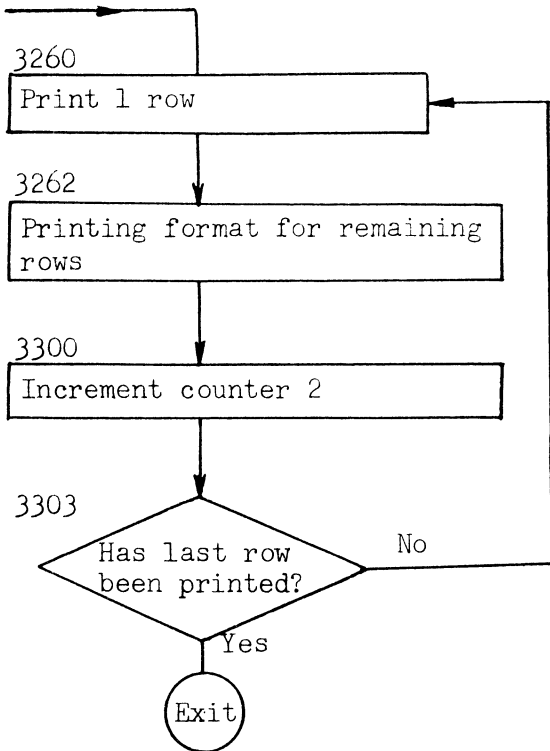
D. The remaining subroutines use only the normal R and U instructions.

CONTROL PROGRAM

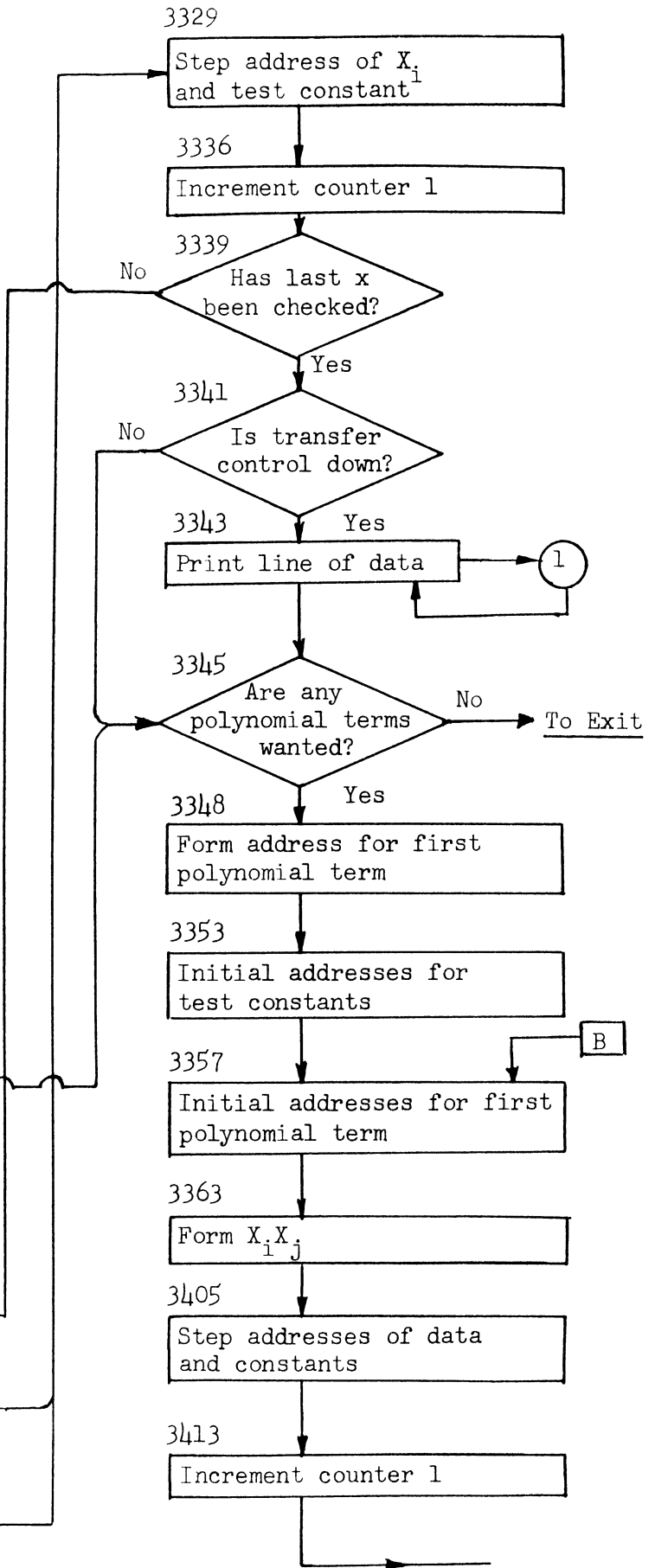
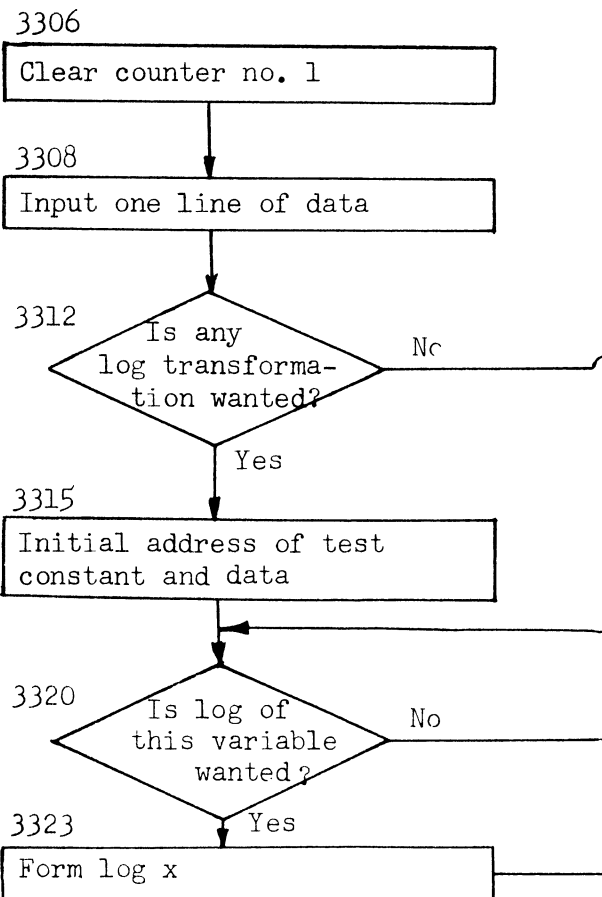


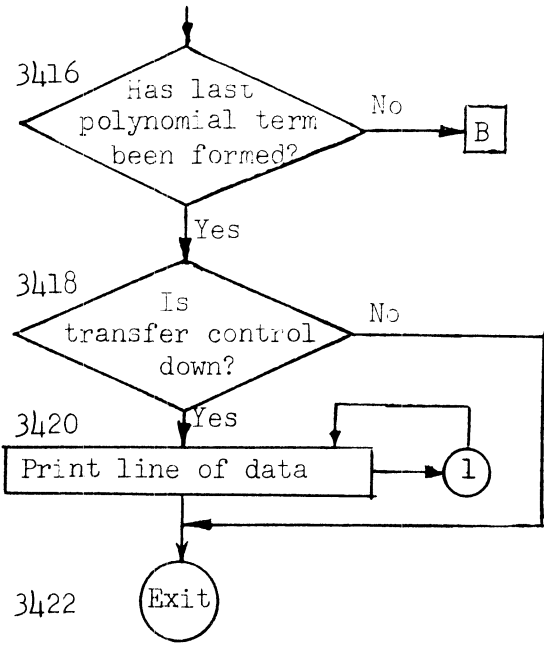




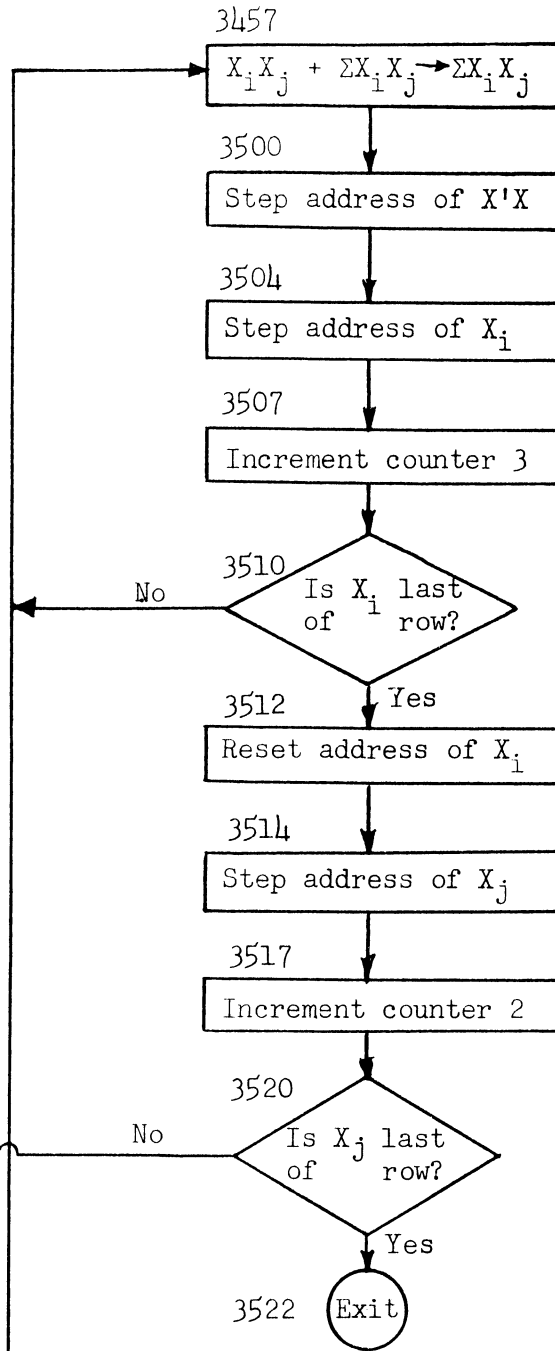
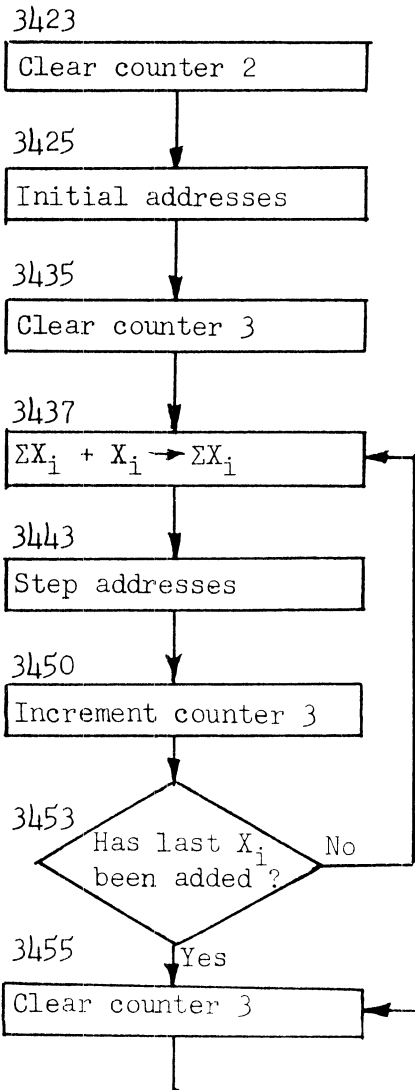


Subroutine no. 4 - Data Input and Transformation

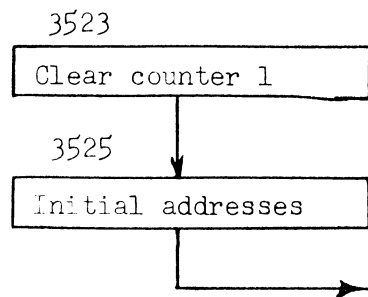


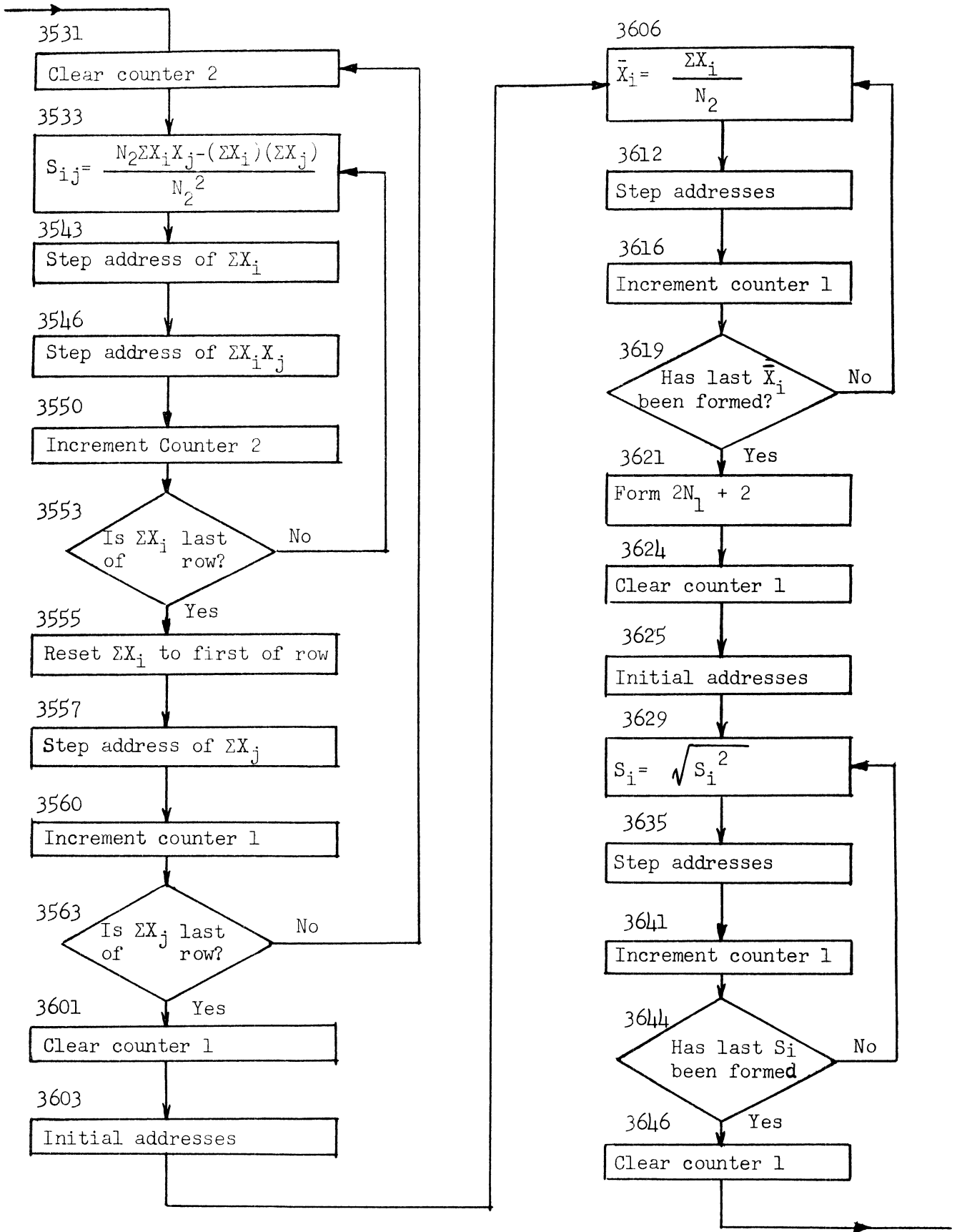


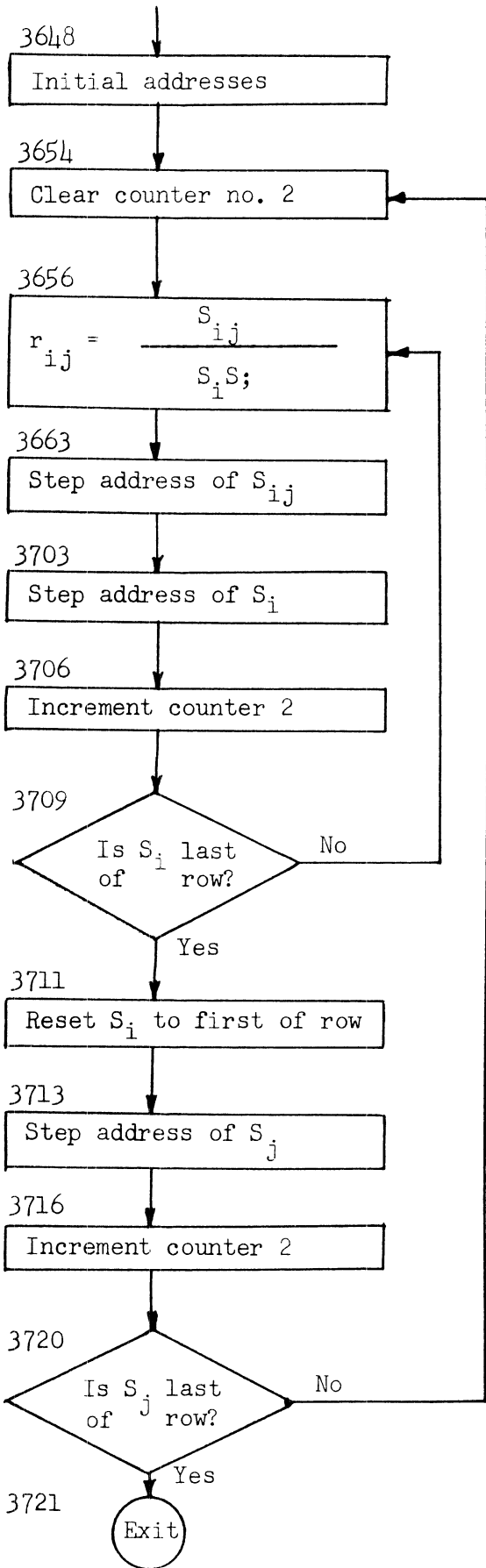
Subroutine no. 5
X'X and ΣX



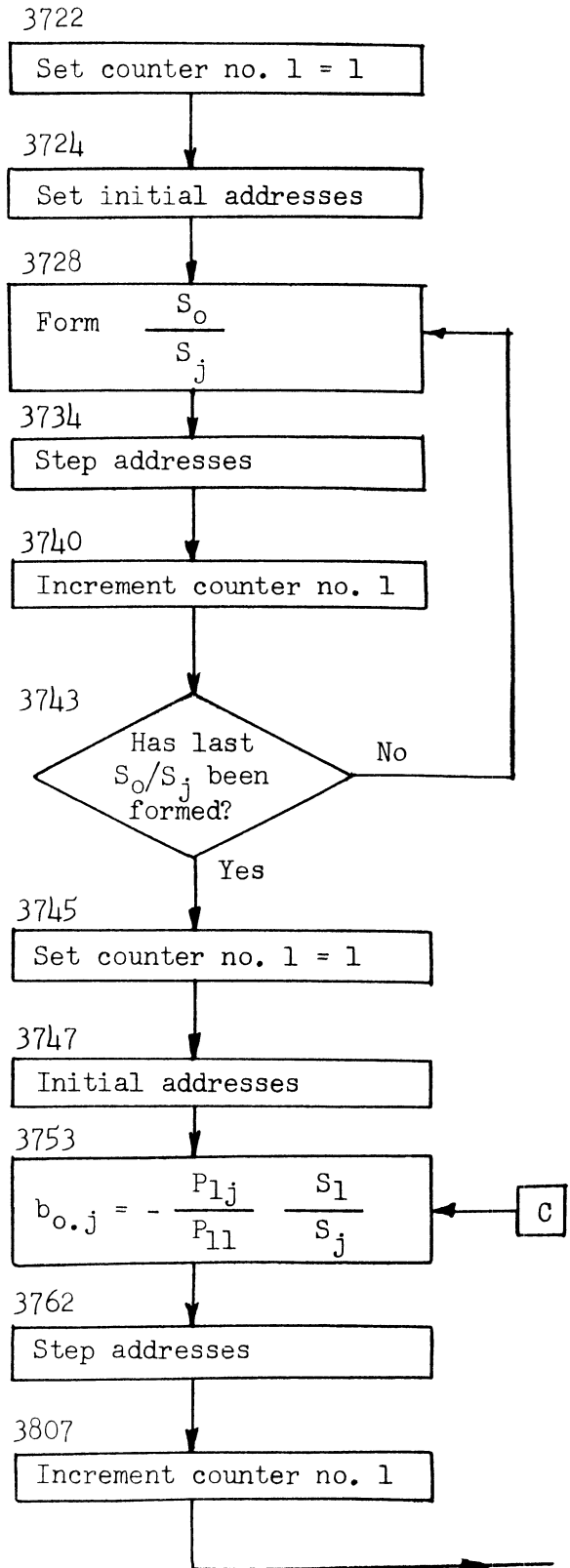
Subroutine no. 6
X_i, S_i, and R

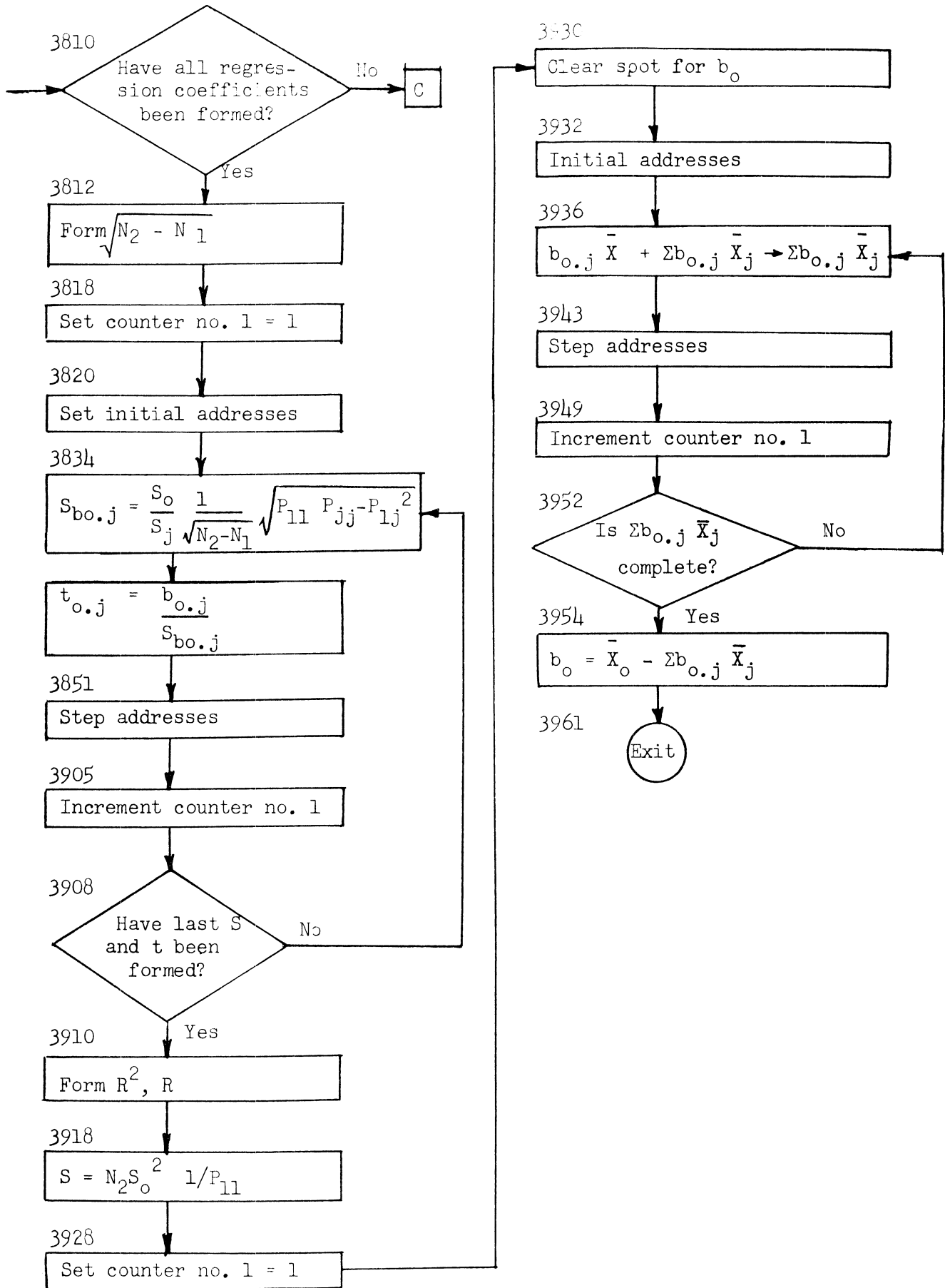




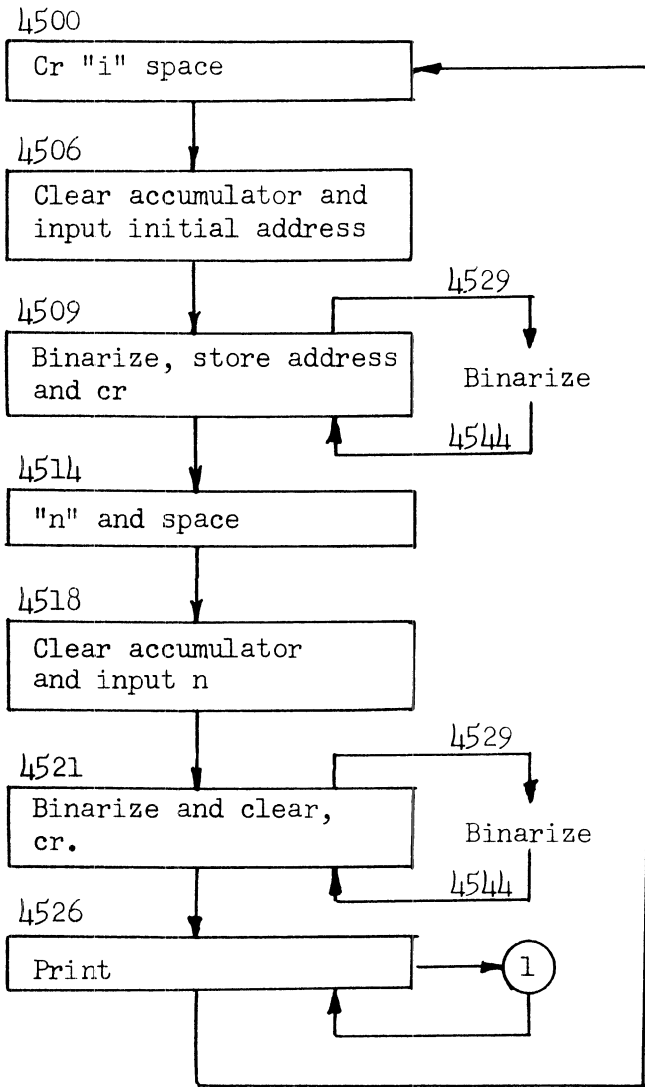


Subroutine No. 7
Form Regression Statistics





Subroutine no. 8
Manual Printing



REGULOG II - MULTIPLE REGRESSION 3

PREPARED FOR: LGP-30, RPC-4000 USERS ORGANIZATION - POOL				PAGE OF 1 / 1
JOB NO.	PROGRAM NO. F2-185	PROGRAM PREPARED BY: James W. Boles	PROGRAM CHECKED BY: POOL Review	DATE
PROBLEM: Regulog II Example: Regression Starting with X'X Matrix				TRACK

PROGRAM INPUT CODES	STOP	LOCATION	INSTRUCTION		STOP	CONTENTS OF ADDRESS	NOTES
			OPERATION	ADDRESS			
; 0 0 0 3 2 3 3	'						
/ 0 0 0 0 0 0 0	'	<input checked="" type="checkbox"/>					
		0 0	Z	0 0 0 6	'	k	} Printing format for ΣX
		0 1	Z	0 0 0 6	'	N ₁	
; 0 0 0 2 7 3 2	'	0 2					
/ 0 0 0 0 0 0 0	'	0 3	Z	0 0 0 6	'	<input checked="" type="checkbox"/> N ₁	} Normal Instruction Constants
		0 4	Z	0 0 1 2	'	2N ₁	
		0 5	Z	0 0 3 6	'	N ₁ ²	
, 0 0 0 0 0 0 1	'	0 6		1 2 0	'	2 N ₁ ²	
		0 7	Z	0 0 1 7	'	<input checked="" type="checkbox"/> N ₂	
		0 8	Z	0 0 0 6	'	k	
		0 9	Z	0 0 0 0	'	No log	
		1 0	Z	0 0 0 0	'	No polys	
; 0 0 0 6 1 3 2	'	1 1				<input checked="" type="checkbox"/>	
/ 0 0 0 0 0 0 0	'	1 2	R	0 3 0 0	'		} Load Data
		1 3	U	0 3 0 0	'		
		1 4	I	0 0 0 0	'		
		1 5	E	0 0 0 0	'	<input checked="" type="checkbox"/>	
		1 6	U	4 0 3 2	'		
. 0 0 0 6 1 3 2	'	1 7					
8 0 0 0 6 2 4 8	'	1 8	1 0 0	0 0 0 0	'	Fl.pt. "1"	} Floating Point Constants
		1 9	0	0 + 0 8	'	<input checked="" type="checkbox"/>	
		2 0	1 4 0	0 0 0 0	'	N ₂	
		2 1	0	0 + 0 7	'		
		2 2	1 9 6	0 0 0 0	'	N ₂ ²	
		2 3	0	0 + 0 6	'	<input checked="" type="checkbox"/>	
		2 4	8 0 0	0 0 0 0	'	N ₂ - N ₁	
		2 5	0	0 + 0 8	'		
		2 6	g r o u p		'		
8 0 0 0 4 8 2 4	'	2 7			'	<input checked="" type="checkbox"/>	} ΣX Data
		2 8			'		
		2 9	g r o u p		'		
8 0 0 0 4 9 0 0	'	3 0			'		} X'X by rows data
		3 1			'	<input checked="" type="checkbox"/>	

Royal McBee Corporation
 DATA PROCESSING DIV.
 PORT CHESTER, NEW YORK

PREPARED FOR: LGP-30, RPC-4000 USERS ORGANIZATION - POOL				PAGE 1 OF 2
JOB NO.	PROGRAM NO. F2 - 185	PROGRAM PREPARED BY J. N. Boles	PROGRAM CHECKED BY: POOL Review	DATE
PROBLEM: Regulog II Example: Regression Starting with Correlation Matrix				TRACK

PROGRAM INPUT CODES	STOP	LOCATION	INSTRUCTION		STOP	CONTENTS OF ADDRESS	NOTES
			OPERATION	ADDRESS			
; 0,0 0 4,6 3 7	'						
/ 0,0 0 0,0 0 0	'	<input checked="" type="checkbox"/>					
		0 0	Z	0 0 1 4		2 N ₁ + 2	Constant needed to pick diagonal terms of matrix
; 0,0 0 3,2 3 3	'	0 1					
/ 0,0 0 0,0 0 0	'	0 2	Z	0 0 0 6		k	} Printing format for \bar{X}_i
		0 3	Z	0 0 0 6	<input checked="" type="checkbox"/>	N ₁	
; 0,0 0 2,7 3 2	'	0 4					
/ 0,0 0 0,0 0 0	'	0 5	Z	0 0 0 6		N ₁	} Normal Instruction Constants
		0 6	Z	0 0 1 2		2 N ₁	
		0 7	Z	0 0 3 6	<input checked="" type="checkbox"/>	N ₁ ²	
, 0,0 0 0,0 0 1	'	0 8		1 2 0		2 N ₁ ²	
		0 9	Z	0 0 1 4		N ₂	
		1 0	Z	0 0 0 6		k	
		1 1	Z	0 0 0 0	<input checked="" type="checkbox"/>	No logs	
		1 2	Z	0 0 0 0		No polys	
; 0,0 0 6,1 3 2	'	1 3					
/ 0,0 0 0,0 0 0	'	1 4	R	0 3 0 0			} Load Data
		1 5	U	0 3 0 0	<input checked="" type="checkbox"/>		
		1 6	I	0 0 0 0			
		1 7	E	0 0 0 0			
		1 8	U	4 0 5 2			
. 0,0 0 6,1 3 2	'	1 9			<input checked="" type="checkbox"/>		
8 0,0 0 6,2 4 8	'	2 0	1 0 0	0 0 0 0		Fl. Pt. "1"	
		2 1	0	0 + 0 8			
		2 2	1 4 0	0 0 0 0		N ₂	} Normal floating point constants
		2 3	0	0 + 0 7	<input checked="" type="checkbox"/>		
		2 4	1 9 6	0 0 0 0		N ₂ ²	
		2 5	0	0 + 0 6			
		2 6	8 0 0	0 0 0 0		N ₂ - N ₁	
		2 7	0	0 + 0 8	<input checked="" type="checkbox"/>		
		2 8	g r o u p				
8 0,0 0 4,8 2 4	'	2 9					} \bar{X}_i
		3 0					
		3 1	g r o u p		<input checked="" type="checkbox"/>		

DATA PROCESSING DIV. PORT CHESTER, NEW YORK

PREPARED FOR: LGP-30, RPC-4000 USERS ORGANIZATION - POOL			PAGE 2 / 2
JOB NO.	PROGRAM NO. F2-185	PROGRAM PREPARED BY: J. N. Boles	PROGRAM CHECKED BY: POOL Review
PROBLEM: Regulog II Example: Regression Starting with Correlation Matrix			DATE
			TRACK

PROGRAM INPUT CODES	STOP	LOCATION	INSTRUCTION		STOP	CONTENTS OF ADDRESS	NOTES
			OPERATION	ADDRESS			
	/				/		
	/	0 0			/		
8,000 6,208	/	0 1			/		} S _i
	/	0 2	Group		/		
8,000 4,900	/	0 3			/		} R Matrix by rows
	/	0 4			/		
	/	0 5	Exit		/		
	/	0 6			/		
	/	0 7			/		
	/	0 8			/		
	/	0 9			/		
	/	1 0			/		
	/	1 1			/		
	/	1 2			/		
	/	1 3			/		
	/	1 4			/		
	/	1 5			/		
	/	1 6			/		
	/	1 7			/		
	/	1 8			/		
	/	1 9			/		
	/	2 0			/		
	/	2 1			/		
	/	2 2			/		
	/	2 3			/		
	/	2 4			/		
	/	2 5			/		
	/	2 6			/		
	/	2 7			/		
	/	2 8			/		
	/	2 9			/		
	/	3 0			/		
	/	3 1			/		

Royal McBee Corporation
 DATA PROCESSING DIV.
 PORT CHESTER, NEW YORK

PREPARED FOR: LGP-30, RPC-4000 USERS ORGANIZATION - POOL				PAGE 0 / 33
JOB NO.	PROGRAM NO: F2-185	PROGRAM PREPARED BY: J. N. Boles	PROGRAM CHECKED BY: POOL Review	DATE
PROBLEM: Regalog II Data Format				TRACK

PROGRAM INPUT CODES	STOP	LOCATION	INSTRUCTION		STOP	CONTENTS OF ADDRESS	NOTES
			OPERATION	ADDRESS			
	/						
	/	<input checked="" type="checkbox"/>					
8 0 0 0 6 2 4 8	'	3 2	1 0 0	0 0 0 0	/	00+08'	"1" N ₂ N ₂ ² N ₂ - N ₁
		3 3	8 0 0	0 0 0 0	/	00+08'	
		3 4	6 4 0	0 0 0 0	/	00+07'	
		3 5	5 0 0	0 0 0 0	/	<input checked="" type="checkbox"/> 00+08'	
		3 6	G r o u p		'		
8 0 0 0 6 1 3 2	'	3 7	3 2 0	0 0 0 0	/	00+07'	Data
		3 8	7 4 0	0 0 0 0	/	00+06'	
		3 9	1 0 0	0 0 0 0	/	<input checked="" type="checkbox"/> 00+08'	
		4 0	E x i t		'		
8 0 0 0 6 1 3 2	'	4 1	3 4 0	0 0 0 0	/	00+07'	Data
		4 2	8 0 4	0 0 0 0	/	00+06'	
		4 3	2 0 0	0 0 0 0	/	<input checked="" type="checkbox"/> 00+08'	
		4 4	E x i t		'		
		4 5			/		
		4 6			/		
		4 7			/	<input checked="" type="checkbox"/>	
		4 8			/		
		4 9			/		
		5 0			/		
		5 1			/	<input checked="" type="checkbox"/>	
		5 2			/		
		5 3			/		
		5 4			/		
		5 5			/	<input checked="" type="checkbox"/>	
		5 6			/		
		5 7			/		
		5 8			/		
		5 9			/	<input checked="" type="checkbox"/>	
		6 0			/		
		6 1			/		
		6 2			/		
		6 3			/	<input checked="" type="checkbox"/>	

PORT CHESTER, NEW YORK

PREPARED FOR LGP-30, RPC-4000 USERS ORGANIZATION - POOL			PAGE OF 1 / 33
JOB NO.	PROGRAM NO. F2-185	PROGRAM PREPARED BY J. N. Boles	PROGRAM CHECKED BY POOL Review
PROBLEM Instruction Constants - Log Transformations			DATE TRACK 27

PROGRAM INPUT CODES	STOP	LOCATION	INSTRUCTION		STOP	CONTENTS OF ADDRESS	NOTES
			OPERATION	ADDRESS			
; 0 0 0 2 7 3 2							
/ 0 0 0 0 0 0 0		<input checked="" type="checkbox"/>					
		2 7 3 2	Z	0 0 2 0		N ₁ = Total number of variables	
		3 3	Z	0 0 4 0		2 N ₁	
, 0 0 0 0 0 0 2		3 4		6 4 0		N ₁ ² 400 at 29	
		3 5		J 8 0		<input checked="" type="checkbox"/> 2N ₁ 800 at 29	
		3 6	Z	0 0 4 5		N ₂ = Number of observations	
		3 7	Z	0 0 0 6		k { = N ₁ if N ₁ ≤ 6 } number of 6 if N ₁ > 6 } columns	
		3 8	Z	0 0 0 7		Want log transformation	
		3 9	Z	0 0 0 0		<input checked="" type="checkbox"/> Do not want polynomial transf.	
		4 0	Z	0 0 0 7		X ₀	
		4 1	Z	0 0 0 7		X ₂	1 Indicates want
		4 2		etc.		X ₄	log transformation
		4 3				<input checked="" type="checkbox"/> X ₆	0 Indicates do not
		4 4				X ₈	want log transformation
		4 5				X ₁₀	
		4 6				X ₁₂	Space allocated for up
		4 7				<input checked="" type="checkbox"/> X ₁₄	to 20 variables
		4 8				X ₁₆	
		4 9				X ₁₈	
		5 0				X ₂₀	
		5 1				<input checked="" type="checkbox"/> X ₂₂	
		5 2				X ₂₄	
		5 3				X ₂₆	
		5 4				X ₂₈	
		5 5				<input checked="" type="checkbox"/> X ₃₀	
		5 6				X ₃₂	
		5 7				X ₃₄	
		5 8				X ₃₆	
		5 9				<input checked="" type="checkbox"/> X ₃₈	
. 0 0 0 4 0 0 0		6 0					
		6 1					
		6 2					
		6 3				<input checked="" type="checkbox"/>	

Royal McBee Corporation
 DATA PROCESSING DIV.
 PORT CHESTER, NEW YORK

PREPARED FOR: LGP-30, RPC-4000 USERS ORGANIZATION - POOL				PAGE OF 1'a / 33
JOB NO.	PROGRAM NO. F2-185	PROGRAM PREPARED BY J. N. Boles	PROGRAM CHECKED BY: POOL Review	DATE
PROBLEM: Instruction Constants - Polynomial Transformation				TRACK 27

PROGRAM INPUT CODES	STOP	LOCATION	INSTRUCTION		STOP	CONTENTS OF ADDRESS	NOTES
			OPERATION	ADDRESS			
3,000 2732	/						
/000 0000	/	<input checked="" type="checkbox"/>					
		3 2	Z	0020	/	$N_1 =$ Total number of variables	
		3 3	Z	0040	/	$2N_1$	
3,000 0002	/	3 4		640	/	N_1^2	
		3 5	J	80	/	<input checked="" type="checkbox"/> $2N_1^2$	
		3 6	Z	0045	/	$N_2 =$ Total number of observations	
		3 7	Z	0006	/	$k = \begin{cases} N_1 & \text{if } N_1 \leq 6 \\ 6 & \text{if } N_1 > 6 \end{cases}$ number of columns	
		3 8	Z	0000	/		No log transformation
		3 9	Z	0001	/	<input checked="" type="checkbox"/> Polynomial transformation	
		4 0	Z	0015	/		
		4 1	Z	0002	/	} x_2^2	
		4 2	Z	0002	/		Up to 15 second
		4 3	Z	0004	/	<input checked="" type="checkbox"/> } x_4^2	order terms generated
		4 4	Z	0004	/		
		4 5	Z	0006	/	} x_6^2	
		4 6	Z	0006	/		
		4 7	Z	0008	/	<input checked="" type="checkbox"/> } x_8^2	
		4 8	Z	0008	/		
		4 9	Z	0010	/	} x_{10}^2	
		5 0	Z	0010	/		
		5 1	Z	0002	/	<input checked="" type="checkbox"/> } $x_2 x_4$	
		5 2	Z	0004	/		
		5 3	Z	0002	/	} $x_2 x_6$	
		5 4	Z	0006	/		
		5 5	Z	0002	/	<input checked="" type="checkbox"/> } $x_2 x_8$	
		5 6	Z	0008	/		
		5 7	Z	0002	/	} $x_2 x_{10}$	
		5 8	Z	0010	/		
		5 9	Z	0004	/	<input checked="" type="checkbox"/> } $x_4 x_6$	
		6 0	Z	0006	/		
		6 1	Z	0004	/	} $x_4 x_8$	
		6 2	Z	0008	/		
		6 3	Z	0004	/	<input checked="" type="checkbox"/> } $x_4 x_{10}$	

CARRIAGE RETURN

DATA PROCESSING DIV. PORT CHESTER, NEW YORK

PREPARED FOR: LGP-30, RPC-4000 USRES ORGANIZATION -POOL			PAGE OF 1'b / 33
JOB NO.	PROGRAM NO F2-185	PROGRAM PREPARED BY J. N. Boles	PROGRAM CHECKED BY: POOL Review
PROBLEM: Instruction Constants - Polynomial Transformation			TRACK 28

PROGRAM INPUT CODES	STOP	LOCATION	INSTRUCTION		STOP	CONTENTS OF ADDRESS	NOTES
			OPERATION	ADDRESS			
	/						
	/	<input checked="" type="checkbox"/>					
		2 8 0 0	Z	0 0 1 0	/		
		0 1	Z	0 0 0 6	/	} X ₆ X ₈	
		0 2	Z	0 0 0 8	/		
		0 3	Z	0 0 0 6	/	<input checked="" type="checkbox"/> } X ₆ X ₁₀	
		0 4	Z	0 0 1 0	/		
		0 5	Z	0 0 0 8	/	} X ₈ X ₁₀	
		0 6	Z	0 0 1 0	/		
. 0 0 0 4 0 0 0	'	0 7			/	<input checked="" type="checkbox"/>	
		0 8			/		
		0 9			/		
		1 0			/		
		1 1			/	<input checked="" type="checkbox"/>	
		1 2			/		
		1 3			/		
		1 4			/		
		1 5			/	<input checked="" type="checkbox"/>	
		1 6			/		
		1 7			/		
		1 8			/		
		1 9			/	<input checked="" type="checkbox"/>	
		2 0			/		
		2 1			/		
		2 2			/		
		2 3			/	<input checked="" type="checkbox"/>	
		2 4			/		
		2 5			/		
		2 6			/		
		2 7			/	<input checked="" type="checkbox"/>	
		2 8			/		
		2 9			/		
		3 0			/		
		3 1			/	<input checked="" type="checkbox"/>	

Royal McBee Corporation
 DATA PROCESSING DIV.
 PORT CHESTER, NEW YORK

PREPARED FOR LGP-30, RPC-4000 USERS ORGANIZATION - POOL				PAGE OF 11 / 33
JOB NO.	PROGRAM NO. F2-185	PROGRAM PREPARED BY J. N. Boles	PROGRAM CHECKED BY POOL Review	DATE
PROBLEM: Instruction Constants - No log and no Polynomial Transformation				TRACK 27

PROGRAM INPUT CODES	STOP	LOCATION	INSTRUCTION		STOP	CONTENTS OF ADDRESS	NOTES
			OPERATION	ADDRESS			
; 0,0,0 2,7,3,2	/						
/, 0,0,0 0,0,0,0	/	⊗					
		3 2	Z	0 0 2 0	/	N_1	
		3 3	Z	0 0 4 0	/	$2 N_1$	
, 0,0,0 0,0,0,2	/	3 4		6 4 0	/	$N_1^2 = 400$ at 29	
		3 5		J 8 0	/	⊗ $2 N_1^2 = 800$ at 29	
		3 6	Z	0 0 4 5	/	$N_2 =$ Number of observations	
		3 7	Z	0 0 0 6	/	$k \begin{cases} = N_1 & \text{if } N_1 \leq 6 \\ = 8 & \text{if } N_1 > 6 \end{cases}$ No. of columns	
		3 8	Z	0 0 0 0	/	No log transformations	
		3 9	Z	0 0 0 0	/	⊗ No polynomial transformations	
. 0,0,0 4,0,0,0	/	4 0			/		
		4 1			/		
		4 2			/		
		4 3			/	⊗	
		4 4			/		
		4 5			/		
		4 6			/		
		4 7			/	⊗	
		4 8			/		
		4 9			/		
		5 0			/		
		5 1			/	⊗	
		5 2			/		
		5 3			/		
		5 4			/		
		5 5			/	⊗	
		5 6			/		
		5 7			/		
		5 8			/		
		5 9			/	⊗	
		6 0			/		
		6 1			/		
		6 2			/		
		6 3			/	⊗	

PORT CHESTER, NEW YORK

PREPARED FOR: LGP-30, RPC-4000 USERS ORGANIZATION - POOL			PAGE OF 2 / 33
JOB NO.	PROGRAM NO. F2-185	PROGRAM PREPARED BY: J. N. Boles	PROGRAM CHECKED BY: POOL Review
PROBLEM: Regulog II			TRACK 28

PROGRAM INPUT CODES	STOP	LOCATION	INSTRUCTION		STOP	CONTENTS OF ADDRESS	NOTES
			OPERATION	ADDRESS			
0 0 0 2 8 0 7	/						
/ 0 0 0 0 0 0 0	/	<input checked="" type="checkbox"/>					
		0 0			/		
		0 1			/		
		0 2			/		
		0 3			/	<input checked="" type="checkbox"/>	
		0 4			/		
		0 5			/		
		0 6			/		
		0 7	Z	6 1, 3, 2	/	<input checked="" type="checkbox"/>	Lo first data word
		0 8	Z	6 1, 3, 4	/		Lo second data word
		0 9	Z	6 2, 0, 8	/		Lo first S _i
		1 0	Z	6 2, 1, 0	/		Lo second S _i
		1 1	Z	0 0, 0, 1	/	<input checked="" type="checkbox"/>	
		1 2	Z	0 0, 0, 2	/		
		1 3	Z	0 0, 0, 3	/		
		1 4	Z	0 0, 0, 4	/		
		1 5	Z	0 0, 0, 5	/	<input checked="" type="checkbox"/>	
		1 6	Z	0 0, 0, 6	/		
		1 7	Z	4 8, 2, 4	/		Lo first X _i
		1 8	Z	4 8, 2, 6	/		Lo second X _i
		1 9			/	<input checked="" type="checkbox"/>	
		2 0			/		
		2 1			/		
		2 2			/		
		2 3			/	<input checked="" type="checkbox"/>	
		2 4			/		
		2 5			/		
		2 6			/		
		2 7			/	<input checked="" type="checkbox"/>	
		2 8			/		
		2 9			/		
		3 0			/		
		3 1			/	<input checked="" type="checkbox"/>	

Royal McBee Corporation
 DATA PROCESSING DIV.
 PORT CHESTER, NEW YORK

PREPARED FOR: LGP-30, RPC -4000 USERS ORGANIZATION - POOL				PAGE 3	OF 33
JOB NO.	PROGRAM NO. F2-185	PROGRAM PREPARED BY: J. N. Boles	PROGRAM CHECKED BY: POOL Review	DATE	
PROBLEM: Regulog II				TRACK 32	

PROGRAM INPUT CODES	STOP	LOCATION	INSTRUCTION		STOP	CONTENTS OF ADDRESS	NOTES
			OPERATION	ADDRESS			
; 0 0 0 3 2 0 0	/						
/ 0 0 0 0 0 0 0	/	<input checked="" type="checkbox"/>					
		3 2 0 0	P	1 6 0 0	/		
		0 1	Z	0 0 1 0	/		
		0 2	P	1 6 0 0	/		
		0 3	Z	0 0 0 0	/	<input checked="" type="checkbox"/>	
		0 4	P	1 6 0 0	/		
		0 5	Z	0 0 0 0	/		
		0 6	C	4 6 3 2	/		} Clear Counter no. 1
		0 7	C	4 6 3 2	/	<input checked="" type="checkbox"/>	
		0 8	B	3 2 3 3	/		} Set up k tester 24.1
		0 9	C	3 2 3 2	/		
		1 0	R	0 3 0 0	/		} Fl.Pt. Int. 24.1
		1 1	U	0 3 0 0	/	<input checked="" type="checkbox"/>	
		1 2	B	8 0 0 []	/		Number to print
		1 3	P	0 0 0 0	/		
		1 4	E	0 0 0 0	/		
		1 5	B	3 2 1 2	/	<input checked="" type="checkbox"/>	} Step address of number to print
		1 6	A	2 8 1 2	/	2 at 29	
		1 7	Y	3 2 1 2	/		
		1 8	B	4 6 3 2	/		Counter number 1
		1 9	A	2 8 1 1	/	<input checked="" type="checkbox"/>	1 at 29
		2 0	H	4 6 3 2	/		
		2 1	S	3 2 3 2	/		} k tester
		2 2	T	3 2 2 8	/		
		2 3	P	1 6 0 0	/	<input checked="" type="checkbox"/>	c.r.
		2 4	Z	0 0 0 0	/		
		2 5	B	3 2 3 2	/		} k tester
		2 6	A	3 2 3 3	/		
		2 7	C	3 2 3 2	/	<input checked="" type="checkbox"/>	
		2 8	B	4 6 3 2	/		Counter no. 1
		2 9	S	3 2 3 4	/		n = no. of words
		3 0	T	3 2 1 0	/		
		3 1	U	[]	/	<input checked="" type="checkbox"/>	Exit

DATA PROCESSING DIV.
PORT CHESTER, NEW YORK

PREPARED FOR: LGP-30, RPC-4000 USERS ORGANIZATION - POOL				PAGE OF 4 / 33
JOB NO.	PROGRAM NO. F2-185	PROGRAM PREPARED BY: J. N. Boles	PROGRAM CHECKED BY: POOL Review	DATE
PROBLEM: Regulog II				TRACK 32

PROGRAM INPUT CODES	STOP	LOCATION	INSTRUCTION		STOP	CONTENTS OF ADDRESS	NOTES	
			OPERATION	ADDRESS				
	/							
	/	3 2 3 2	[/	k tester		
		3 3	[/	k		
		3 4	[/	n = number of words		
		3 5	C	4 6 3 2	/	<input checked="" type="checkbox"/>	Clear counter no. 1	
		3 6	C	4 6 3 2	/			
		3 7	C	[/			
		3 8	C	[/			
		3 9	B	3 2 3 7	/	<input checked="" type="checkbox"/>	} Step addresses	
		4 0	A	2 8 1 1	/	1 at 29		
		4 1	Y	3 2 3 7	/			
		4 2	Y	3 2 3 8	/			
		4 3	B	4 6 3 2	/	<input checked="" type="checkbox"/>	Counter no. 1	
		4 4	A	2 8 1 1	/		1 at 29	
		4 5	H	4 6 3 2	/			
		4 6	S	3 2 4 9	/		n	
		4 7	T	3 2 3 7	/	<input checked="" type="checkbox"/>		
		4 8	U	[/			
		4 9	[/		n = number of words	
		5 0	C	4 6 3 3	/		Clear counter no. 2	
		5 1	C	4 6 3 3	/	<input checked="" type="checkbox"/>		
		5 2	B	4 6 0 0	/		4900	
		5 3	Y	3 2 1 2	/		} Printing format	
		5 4	B	2 7 3 7	/			k
		5 5	C	3 2 3 3	/	<input checked="" type="checkbox"/>		
		5 6	B	2 7 3 2	/		N ₁	
		5 7	C	3 2 3 4	/			
		5 8	B	4 6 0 3	/		3200	
		5 9	Y	3 2 6 1	/	<input checked="" type="checkbox"/>	Print 3 c.r. before first row	
		6 0	R	3 2 3 1	/		} Print by rows	
		6 1	U	[/			
		6 2	B	4 6 0 4	/		3204	
		6 3	Y	3 2 6 1	/	<input checked="" type="checkbox"/>	1 c.r. for subsequent rows	

Royal McBee Corporation
 DATA PROCESSING DIV.
 PORT CHESTER, NEW YORK

PREPARED FOR: LGP-30, RPC-4000 USERS ORGANIZATION - POOL				PAGE 5	OF 33
JOB NO.	PROGRAM NO. F2-185	PROGRAM PREPARED BY J.N. Boles	PROGRAM CHECKED BY: POOL Review	DATE	
PROBLEM: Regulog II				TRACK 33	

PROGRAM INPUT CODES	STOP	LOCATION	INSTRUCTION		STOP	CONTENTS OF ADDRESS	NOTES
			OPERATION	ADDRESS			
	/						
	/	3300	B	4633	/	Counter no. 2	
		01	A	2811	/	1 at 29	
		02	H	4633	/		
		03	S	2732	/	<input checked="" type="checkbox"/> N ₁	
		04	T	3260	/		
		05	U	[]	/		
		06	C	4632	/		Clear counter no. 1
		07	C	4632	/	<input checked="" type="checkbox"/>	
		08	R	0300	/		} 24.1
		09	U	0300	/		
		10	I	0000	/		
		11	E	0000	/	<input checked="" type="checkbox"/>	
		12	B	2738	/		
		13	S	2811	/	1 at 29	
		14	T	3345	/		→ Is any log transformation wanted?
		15	B	4605	/	<input checked="" type="checkbox"/> 2740	
		16	Y	3320	/		
		17	B	2807	/	6132	Lo of X ₀
		18	Y	3325	/		
		19	Y	3327	/	<input checked="" type="checkbox"/>	
		20	B	[2740]	/		
		21	S	2811	/	1 at 29	
		22	T	3329	/		
		23	R	0300	/	<input checked="" type="checkbox"/>	} 24.1
		24	U	0300	/		
		25	8 0 0 B	[6132]	/		Form log X _i
		26	N	0000	/		
		27	8 0 0 C	[6132]	/	<input checked="" type="checkbox"/>	
		28	E	0000	/		
		29	B	3325	/		
		30	A	2812	/	2 at 29	
		31	Y	3325	/	<input checked="" type="checkbox"/>	

PORT CHESTER, NEW YORK

PREPARED FOR: LGP-30, RPC-4000 USERS ORGANIZATION - POOL				PAGE OF 6 / 33
JOB NO.	PROGRAM NO. F2-185	PROGRAM PREPARED BY J. N. Boles	PROGRAM CHECKED BY. POOL Review	DATE
PROBLEM: Regulog II				TRACK 33

PROGRAM INPUT CODES	STOP	LOCATION	INSTRUCTION		STOP	CONTENTS OF ADDRESS	NOTES
			OPERATION	ADDRESS			
	/						
	/	<input checked="" type="checkbox"/>					
		3,3,3,2	Y	3,3,2,7	/		
		3,3	B	3,3,2,0	/		
		3,4	A	2,8,1,1	/	1 at 29	
		3,5	Y	3,3,2,0	/	<input checked="" type="checkbox"/>	
		3,6	B	4,6,3,2	/	Counter no.1	
		3,7	A	2,8,1,1	/	1 at 29	
		3,8	H	4,6,3,2	/		
		3,9	S	2,7,3,2	/	<input checked="" type="checkbox"/> N ₁	
		4,0	T	3,3,2,0	/		
		4,1	8,0,0 T	3,3,4,3	/		Transfer Control
		4,2	U	3,3,4,5	/		
		4,3	R	3,2,3,1	/	<input checked="" type="checkbox"/>	} Print
		4,4	U	3,2,0,4	/		
		4,5	B	2,7,3,9	/		
		4,6	S	2,8,1,1	/	1 at 29	
		4,7	T	3,4,2,2	/	<input checked="" type="checkbox"/> →	No polynomial terms wanted
		4,8	B	2,7,3,3	/	2 N ₁	
		4,9	S	2,7,4,0	/	N ₃ = No. of variables generated	
		5,0	S	2,7,4,0	/	N ₃	
		5,1	A	2,8,0,7	/	<input checked="" type="checkbox"/> 6132	
		5,2	Y	3,4,0,3	/	6132 + 2	(N ₁ - N ₃)
		5,3	B	4,6,0,6	/	2741	
		5,4	Y	3,3,5,7	/		
		5,5	A	2,8,1,1	/	<input checked="" type="checkbox"/> 1 at 29	
		5,6	Y	3,3,6,0	/		
		5,7	B	[2,7,4,1]	/		
		5,8	A	2,8,0,7	/	6132	
		5,9	Y	3,4,0,1	/	<input checked="" type="checkbox"/>	
		6,0	B	[2,7,4,2]	/		
		6,1	A	2,8,0,7	/	6132	
		6,2	Y	3,4,0,2	/		
		6,3	R	0,3,0,0	/	<input checked="" type="checkbox"/>	

Royal McBee Corporation
 DATA PROCESSING DIV.
 PORT CHESTER, NEW YORK

PREPARED FOR: LGP-30, RPC-4000 USERS ORGANIZATION - POOL			PAGE OF 7 / 33	
JOB NO.	PROGRAM NO. F2-185	PROGRAM PREPARED BY J. N. Boles	PROGRAM CHECKED BY: POOL Review	DATE
PROBLEM: Regulog II			TRACK 34	

PROGRAM INPUT CODES	STOP	LOCATION	INSTRUCTION		STOP	CONTENTS OF ADDRESS	NOTES
			OPERATION	ADDRESS			
	/						
	/	<input checked="" type="checkbox"/>					
		3400	U	0300	/		24.1
		01	800 P	[6132]	/	X _i	
		02	800 M	[6132]	/	X _j	
		03	800 C	[6132]	/	<input checked="" type="checkbox"/> X _i X _j	
		04	E	0000	/		
		05	B	3357	/		
		06	A	2812	/	2 at 29	} Step addresses of constants
		07	Y	3357	/	<input checked="" type="checkbox"/>	
		08	A	2811	/	1 at 29	
		09	Y	3360	/		
		10	B	3403	/		} Step address of X _i X _j
		11	A	2812	/	<input checked="" type="checkbox"/> 2 at 29	
		12	Y	3403	/		
		13	B	4632	/	Counter no.1	
		14	A	2811	/	1 at 29	
		15	H	4632	/	<input checked="" type="checkbox"/>	
		16	S	2740	/	N ₃ = No. of variables generated	
		17	T	3357	/		
		18	800 T	3420	/		
		19	U	3422	/	<input checked="" type="checkbox"/>	
		20	R	3231	/		} Print
		21	U	3204	/		
		22	U	0000	/		Exit
		23	C	4633	/	<input checked="" type="checkbox"/>	Clear counter no. 2
		24	C	4633	/		
		25	B	2817	/	4824	Lo \bar{X}_0 , ΣX_0
		26	Y	3439	/		
		27	Y	3441	/	<input checked="" type="checkbox"/>	
		28	B	2807	/	6132	Lo of X ₀
		29	Y	3440	/		
		30	Y	3459	/		
		31	Y	3460	/	<input checked="" type="checkbox"/>	

DATA PROCESSING DIV. PORT CHESTER, NEW YORK

PREPARED FOR: LGP-30, RPC-4000 USERS ORGANIZATION -POOL			PAGE 8 OF 33
JOB NO.	PROGRAM NO. F2-185	PROGRAM PREPARED BY J.N. Boles	PROGRAM CHECKED BY: POOL Review
PROBLEM: Regulog II			DATE
			TRACK 34

PROGRAM INPUT CODES	STOP	LOCATION	INSTRUCTION		STOP	CONTENTS OF ADDRESS	NOTES
			OPERATION	ADDRESS			
	/						
	/	<input checked="" type="checkbox"/>					
		3 4 3 2		B 4 6 0 0	/	xz4900	Lo Of X'X
		3 3		Y 3 4 6 1	/		
		3 4		Y 3 4 6 2	/		
		3 5		C 4 6 3 4	/	<input checked="" type="checkbox"/>	Clear Counter No. 3
		3 6		C 4 6 3 4	/		
		3 7		R 0 3 0 0	/		} Fl.Pt. Int. 24.2
		3 8		U 0 3 0 0	/		
		3 9	8 0 0	B [. . .]	/	<input checked="" type="checkbox"/> ΣX_i	
		4 0	8 0 0	A [. . .]	/	$\Sigma X_i + X_i$	Form ΣX_i
		4 1	8 0 0	C [. . .]	/	ΣX_i	
		4 2		E 0 0 0 0	/		
		4 3		B 3 4 3 9	/	<input checked="" type="checkbox"/>	} Step Addresses
		4 4		A 2 8 1 2	/	2 at 29	
		4 5		Y 3 4 3 9	/		
		4 6		Y 3 4 4 1	/		
		4 7		B 3 4 4 0	/	<input checked="" type="checkbox"/>	
		4 8		A 2 8 1 2	/	2 at 29	
		4 9		Y 3 4 4 0	/		
		5 0		B 4 6 3 4	/		
		5 1		A 2 8 1 1	/	<input checked="" type="checkbox"/> 1 at 29	Increment Counter No. 4
		5 2		H 4 6 3 4	/		
		5 3		S 2 7 3 2	/		
		5 4		T 3 4 3 7	/		
		5 5		C 4 6 3 4	/	<input checked="" type="checkbox"/>	} Clear Counter No. 3
		5 6		C 4 6 3 4	/		
		5 7		R 0 3 0 0	/		} Fl.Pt. Int. 24.2
		5 8		U 0 3 0 0	/		
		5 9	8 0 0	P [. . .]	/	<input checked="" type="checkbox"/>	
		6 0	8 0 0	M [. . .]	/		Form X'X
		6 1	8 0 0	A [. . .]	/		
		6 2	8 0 0	C [. . .]	/		
		6 3		E 0 0 0 0	/	<input checked="" type="checkbox"/>	

Royal McBee Corporation
 DATA PROCESSING DIV.
 PORT CHESTER, NEW YORK

PREPARED FOR: LGP-30 RPC-4000 USERS ORGANIZATION - POOL			PAGE 9	OF 33
JOB NO.	PROGRAM NO. F2-185	PROGRAM PREPARED BY: J.N. Boles	PROGRAM CHECKED BY: POOL Review	DATE
PROBLEM: Regulog II			TRACK 35	

PROGRAM INPUT CODES	STOP	LOCATION	INSTRUCTION		STOP	CONTENTS OF ADDRESS	NOTES
			OPERATION	ADDRESS			
	/						
	/	<input checked="" type="checkbox"/>					
		3,5,0,0	B	3,4,6,1	/		} Step X'X addresses
		0,1	A	2,8,1,2	/	2 at 29	
		0,2	Y	3,4,6,1	/		
		0,3	Y	3,4,6,2	/	<input checked="" type="checkbox"/>	
		0,4	B	3,4,5,9	/		} Step P multiplier
		0,5	A	2,8,1,2	/	2 at 29	
		0,6	Y	3,4,5,9	/		
		0,7	B	4,6,3,4	/	<input checked="" type="checkbox"/>	} Increment counter no. 3
		0,8	A	2,8,1,1	/	1 at 29	
		0,9	H	4,6,3,4	/		
		1,0	S	2,7,3,2	/	N ₇	
		1,1	T	3,4,5,7	/	<input checked="" type="checkbox"/>	
		1,2	B	2,8,0,7	/	6132	} Reset P multiplier
		1,3	Y	3,4,5,9	/		
		1,4	B	3,4,6,0	/		
		1,5	A	2,8,1,2	/	<input checked="" type="checkbox"/>	} Step M multiplier
		1,6	Y	3,4,6,0	/		
		1,7	B	4,6,3,3	/	Counter 2	
		1,8	A	2,8,1,1	/	1 at 29	} Increment counter 2
		1,9	H	4,6,3,3	/	<input checked="" type="checkbox"/>	
		2,0	S	2,7,3,2	/	N ₇	
		2,1	T	3,4,5,5	/		
		2,2	U	0,0,0,0	/		Exit
		2,3	C	4,6,3,2	/	<input checked="" type="checkbox"/>	} Clear counter no. 1
		2,4	C	4,6,3,2	/		
		2,5	B	2,8,1,7	/	4824	
		2,6	Y	3,5,3,5	/		Lo $\bar{X}_0, \Sigma X_0$
		2,7	Y	3,5,3,6	/	<input checked="" type="checkbox"/>	
		2,8	B	4,6,0,0	/	4900	Lo X'X
		2,9	Y	3,5,3,8	/		
		3,0	Y	3,5,4,1	/		
		3,1	C	4,6,3,3	/	<input checked="" type="checkbox"/>	

DATA PROCESSING DIV.
PORT CHESTER, NEW YORK



PREPARED FOR LGP-30 RPC-4000 USERS ORGANIZATION - POOL			PAGE 10	OF 33
JOB NO.	PROGRAM NO. F2-185	PROGRAM PREPARED BY J.N. Boles	PROGRAM CHECKED BY POOL Review	DATE
PROBLEM: Regulog II			TRACK 35	

PROGRAM INPUT CODES	STOP	LOCATION	INSTRUCTION		STOP	CONTENTS OF ADDRESS	NOTES
			OPERATION	ADDRESS			
	/						
	/	<input checked="" type="checkbox"/>					
		3 5 3 2	C	4 6 3 3	/		Clear counter 2
		3 3	R	0 3 0 0	/		} 24.1
		3 4	U	0 3 0 0	/		
		3 5	8 0 0 P	[4 8 2 4]	/	<input checked="" type="checkbox"/> ΣX_i	
		3 6	8 0 0 M	[4 8 2 4]	/	ΣX_j	} Form S_{ij}
		3 7	Y	0 0 0 0	/	$-(\Sigma X_i) (\Sigma X_j)$	
		3 8	8 0 0 P	[4 9 0 0]	/	$\Sigma X_i X_j$	
		3 9	8 0 0 N	[6 2 5 0]	/	<input checked="" type="checkbox"/> N_2	
		4 0	8 0 0 D	[6 2 5 2]	/	N_2^2	
		4 1	8 0 0 C	[4 9 0 0]	/	S_{ij}	
		4 2	E	0 0 0 0	/		
		4 3	B	3 5 3 5	/	<input checked="" type="checkbox"/>	} Step P multiplier
		4 4	A	2 8 1 2	/	2 at 29	
		4 5	Y	3 5 3 5	/		} Step addresses of S_{ij}
		4 6	B	3 5 3 8	/		
		4 7	A	2 8 1 2	/	<input checked="" type="checkbox"/> 2 at 29	
		4 8	Y	3 5 3 8	/		} Increment counter 2
		4 9	Y	3 5 4 1	/		
		5 0	B	4 6 3 3	/		} Increment counter 2
		5 1	A	2 8 1 1	/	<input checked="" type="checkbox"/> 1 at 29	
		5 2	H	4 6 3 3	/		
		5 3	S	2 7 3 2	/	N_1	
		5 4	T	3 5 3 3	/		
		5 5	B	2 8 1 7	/	<input checked="" type="checkbox"/> 4824	} Reset P multiplier
		5 6	Y	3 5 3 5	/		
		5 7	B	3 5 3 6	/		} Step M multiplier
		5 8	A	2 8 1 2	/	2 at 29	
		5 9	Y	3 5 3 6	/	<input checked="" type="checkbox"/>	
		6 0	B	4 6 3 2	/		} Increment counter 1
		6 1	A	2 8 1 1	/	1 at 29	
		6 2	H	4 6 3 2	/		
		6 3	S	2 7 3 2	/	<input checked="" type="checkbox"/> N_1	

Royal McBee Corporation
 DATA PROCESSING DIV.
 PORT CHESTER, NEW YORK

PREPARED FOR: LGP-30 RPC-4000 USERS ORGANIZATION - POOL			PAGE 11	OF 33
JOB NO.	PROGRAM NO. F2-185	PROGRAM PREPARED BY: J.N. Boles	PROGRAM CHECKED BY: POOL Review	DATE
PROBLEM: Regulog II			TRACK 36	

PROGRAM INPUT CODES	STOP	LOCATION	INSTRUCTION		STOP	CONTENTS OF ADDRESS	NOTES
			OPERATION	ADDRESS			
	/						
	/	3 6 0 0	T	3 5 3 1	/		
		0 1	C	4 6 3 2	/		} Clear counter 1
		0 2	C	4 6 3 2	/		
		0 3	B	2 8 1 7	/	4824	
		0 4	Y	3 6 0 8	/		
		0 5	Y	3 6 1 0	/		
		0 6	R	0 3 0 0	/		} 24.1
		0 7	U	0 3 0 0	/		
		0 8	8 0 0 B	[4 8 2 4]	/	ΣX_i	
		0 9	8 0 0 D	6 2 5 0	/	N_2	Form \bar{X}_i
		1 0	8 0 0 C	[4 8 2 4]	/	\bar{X}	
		1 1	E	0 0 0 0	/		
		1 2	B	3 6 0 8	/		} Step addresses of \bar{X}_i
		1 3	A	2 8 1 2	/	2 at 29	
		1 4	Y	3 6 0 8	/		
		1 5	Y	3 6 1 0	/		
		1 6	B	4 6 3 2	/	Counter 1	} Increment counter no. 1
		1 7	A	2 8 1 1	/	1 at 29	
		1 8	H	4 6 3 2	/		
		1 9	S	2 7 3 2	/	N_1	
		2 0	T	3 6 0 6	/		
		2 1	B	2 7 3 3	/	$2 N_1$ at 29	
		2 2	A	2 8 1 2	/	2 at 29	
		2 3	C	4 6 3 1	/	$2 N_1 + 2$ at 29	
		2 4	C	4 6 3 2	/	Clear counter 1	
		2 5	B	4 6 0 0	/	4900	
		2 6	Y	3 6 3 1	/		
		2 7	B	2 8 0 9	/	6208	
		2 8	Y	3 6 3 3	/		
		2 9	R	0 3 0 0	/		} 24.1
		3 0	U	0 3 0 0	/		
		3 1	8 0 0 B	[4 9 0 0]	/	S_i^2	

PORT CHESTER, NEW YORK

PREPARED FOR: LGP-30 RPC-4000 USERS ORGANIZATION - POOL				PAGE 12 OF 33
JOB NO.	PROGRAM NO. F2-185	PROGRAM PREPARED BY J.N. Boles	PROGRAM CHECKED BY: POOL Review	DATE
PROBLEM: Regulog II				TRACK 36

PROGRAM INPUT CODES	STOP	LOCATION	INSTRUCTION		STOP	CONTENTS OF ADDRESS	NOTES
			OPERATION	ADDRESS			
	/						
	/	3 6 3 2	R	0 0 0 0	/	$\sqrt{S_i^2}$	Form S_i
		3 3	8 0 0 C	6 2 0 8	/	S_i	
		3 4	E	0 0 0 0	/		
		3 5	B	3 6 3 1	/	<input checked="" type="checkbox"/>	
		3 6	A	4 6 3 1	/	$2N_1 + 2$	
		3 7	Y	3 6 3 1	/		
		3 8	B	3 6 3 3	/		
		3 9	A	2 8 1 2	/	<input checked="" type="checkbox"/> 2 at 29	
		4 0	Y	3 6 3 3	/		
		4 1	B	4 6 3 2	/	Counter 1	
		4 2	A	2 8 1 1	/	1 at 29	
		4 3	H	4 6 3 2	/	<input checked="" type="checkbox"/>	
		4 4	S	2 7 3 2	/	N_1	
		4 5	T	3 6 2 9	/		
		4 6	C	4 6 3 2	/		Clear counter 1
		4 7	C	4 6 3 2	/	<input checked="" type="checkbox"/>	
		4 8	B	2 8 0 9	/	6208	
		4 9	Y	3 6 5 9	/		
		5 0	Y	3 6 6 0	/		
		5 1	B	4 6 0 0	/	<input checked="" type="checkbox"/> 4900	
		5 2	Y	3 6 5 8	/		
		5 3	Y	3 6 6 1	/		
		5 4	C	4 6 3 3	/		clear counter 2
		5 5	C	4 6 3 3	/	<input checked="" type="checkbox"/>	
		5 6	R	0 3 0 0	/		} 24.1
		5 7	U	0 3 0 0	/		
		5 8	8 0 0 B	[4 9 0 0]	/		
		5 9	8 0 0 D	[6 2 0 8]	/	<input checked="" type="checkbox"/>	Form r_{ij}
		6 0	8 0 0 D	[6 2 0 8]	/		
		6 1	8 0 0 C	[4 9 0 0]	/		
		6 2	E	0 0 0 0	/		
		6 3	B	3 6 5 8	/	<input checked="" type="checkbox"/>	

Royal McBee Corporation
 DATA PROCESSING DIV.
 PORT CHESTER, NEW YORK

PREPARED FOR: LGP-30 RPC-4000 USERS ORGANIZATION - POOL				PAGE 13	OF 33
JOB NO.	PROGRAM NO. F2-185	PROGRAM PREPARED BY: J.N. Boles	PROGRAM CHECKED BY: POOL Review	DATE	
PROBLEM: Regulog II				TRACK 37	

PROGRAM INPUT CODES	STOP	LOCATION	INSTRUCTION		STOP	CONTENTS OF ADDRESS	NOTES
			OPERATION	ADDRESS			
	/						
	/	⊗					
		3,7 0 0	A	2 8 1 2	/	2 at 29	} Step addresses of r _{ij}
		0 1	Y	3 6 5 8	/		
		0 2	Y	3 6 6 1	/		
		0 3	B	3 6 5 9	/	⊗ 2 at 29	} Step address of first D
		0 4	A	2 8 1 2	/		
		0 5	Y	3 6 5 9	/		} Increment counter
		0 6	B	4 6 3 3	/		
		0 7	A	2 8 1 1	/	⊗	
		0 8	H	4 6 3 3	/		} N ₁
		0 9	S	2 7 3 2	/		
		1 0	T	3 6 5 6	/		} Reset first D
		1 1	B	2 8 0 9	/	⊗ 6208	
		1 2	Y	3 6 5 9	/		
		1 3	B	3 6 6 0	/		} Step address of 2nd D
		1 4	A	2 8 1 2	/		
		1 5	Y	3 6 6 0	/	⊗	} Increment counter 1
		1 6	B	4 6 3 2	/		
		1 7	A	2 8 1 1	/	1 at 29	
		1 8	H	4 6 3 2	/		} N ₁
		1 9	S	2 7 3 2	/	⊗ N ₁	
		2 0	T	3 6 5 4	/		Exit
		2 1	U	[0 0 0 0]	/		
		2 2	B	2 8 1 1	/	1 at 29	Set counter 1 = 1
		2 3	C	4 6 3 2	/	⊗	
		2 4	B	2 8 1 0	/	6210	Lo of S ₂
		2 5	Y	3 7 3 1	/		
		2 6	B	2 8 0 7	/	6132	} 24.1
		2 7	Y	3 7 3 2	/	⊗	
		2 8	R	0 3 0 0	/		} S ₀
		2 9	U	0 3 0 0	/		
		3 0	8 0 0 B	6 2 0 8	/	S ₀	Form S ₀ /S _j
		3 1	8 0 0 D	[6 2 1 0]	/	⊗ S _j	

PORT CHESTER, NEW YORK

PREPARED FOR LGP-30 RPC-4000 USERS ORGANIZATION - POOL				PAGE 14	OF 33
JOB NO.	PROGRAM NO F2-185	PROGRAM PREPARED BY J.N. Boles	PROGRAM CHECKED BY POOL Review	DATE	
PROBLEM Regulog II				TRACK 37	

PROGRAM INPUT CODES	STOP	LOCATION	INSTRUCTION		STOP	CONTENTS OF ADDRESS	NOTES
			OPERATION	ADDRESS			
	/						
	/	<input checked="" type="checkbox"/>					
	/	3 7	8 0 0 C	[6 1 3 2]	/		
	/	3 3	E	0 0 0 0	/		
	/	3 4	B	3 7 3 1	/		
	/	3 5	A	2 8 1 2	/	<input checked="" type="checkbox"/> 2 at 29	
	/	3 6	Y	3 7 3 1	/		
	/	3 7	B	3 7 3 2	/		
	/	3 8	A	2 8 1 2	/	2 at 29	
	/	3 9	Y	3 7 3 2	/	<input checked="" type="checkbox"/>	
	/	4 0	B	4 6 3 2	/	counter 1	
	/	4 1	A	2 8 1 1	/	1 at 29	
	/	4 2	H	4 6 3 2	/		
	/	4 3	S	2 7 3 2	/	<input checked="" type="checkbox"/> N ₁	
	/	4 4	T	3 7 2 8	/		
	/	4 5	B	2 8 1 1	/	1 at 29	Set counter 1 = 1
	/	4 6	C	4 6 3 2	/		
	/	4 7	B	4 6 0 1	/	<input checked="" type="checkbox"/> 4902	Lo P ₁₂
	/	4 8	Y	3 7 5 5	/		
	/	4 9	B	2 8 0 7	/	6132	Lo S ₁ /S ₂
	/	5 0	Y	3 7 5 9	/		
	/	5 1	B	4 6 0 2	/	<input checked="" type="checkbox"/> 4636	Lo b _{0.2}
	/	5 2	Y	3 7 6 0	/		
	/	5 3	R	0 3 0 0	/		} 24.1
	/	5 4	U	0 3 0 0	/		
	/	5 5	8,0,0 B	[4,9,0,2]	/	<input checked="" type="checkbox"/> P _{1j}	} Form b _{0.j}
	/	5 6	8,0,0 D	4,9,0,0	/	P ₁₁	
	/	5 7	Y	0 0 0 0	/	-P _{1j} /P ₁₁	
	/	5 8	U	0 0 0 0	/		
	/	5 9	8 0 0 M	[6 1 3 2]	/	<input checked="" type="checkbox"/> S ₁ /S _j	
	/	6 0	8 0 0 C	[4 6 3 6]	/	b _{0.j}	
	/	6 1	E	0 0 0 0	/		
	/	6 2	B	3 7 5 5	/		
	/	6 3	A	2 8 1 2	/	<input checked="" type="checkbox"/> 2 at 29	

Royal McBee Corporation
 DATA PROCESSING DIV.
 FORT CHESTER, NEW YORK

PREPARED FOR: LGP-30 RPC-4000 USERS ORGANIZATION - POOL				PAGE 15	OF / 33
JOB NO.	PROGRAM NO. F2-185	PROGRAM PREPARED BY. J.N. Boles	PROGRAM CHECKED BY: POOL Review	DATE	
PROBLEM: Regulog II				TRACK 38	

PROGRAM INPUT CODES	STOP	LOCATION	INSTRUCTION		STOP	CONTENTS OF ADDRESS	NOTES
			OPERATION	ADDRESS			
	/						
	/	<input checked="" type="checkbox"/>					
		3 8 0 0	Y	3 7 5 5	/		
		0 1	B	3 7 5 9	/		} Step address of S _i /S _j
		0 2	A	2 8 1 2	/	2 at 29	
		0 3	Y	3 7 5 9	/	<input checked="" type="checkbox"/>	
		0 4	B	3 7 6 0	/		
		0 5	A	2 8 1 6	/	6 at 29	
		0 6	Y	3 7 6 0	/		
		0 7	B	4 6 3 2	/	<input checked="" type="checkbox"/> counter 1	} Increment counter 1
		0 8	A	2 8 1 1	/	1 at 29	
		0 9	H	4 6 3 2	/		
		1 0	S	2 7 3 2	/	N ₁	
		1 1	T	3 7 5 3	/	<input checked="" type="checkbox"/>	
		1 2	R	0 3 0 0	/		} 24.1
		1 3	U	0 3 0 0	/		
		1 4	8 0 0 B	6 2 5 4	/	N ₂ - N ₇	
		1 5	R	0 0 0 0	/	<input checked="" type="checkbox"/>	
		1 6	8 0 0 C	6 2 6 0	/	$\sqrt{N_2 - N_7}$	
		1 7	E	0 0 0 0	/		
		1 8	B	2 8 1 1	/	1 at 29	} Set counter 1 = 1
		1 9	C	4 6 3 2	/	<input checked="" type="checkbox"/>	
		2 0	B	4 6 0 2	/	4636	Lo b _{0.2}
		2 1	Y	3 8 4 7	/		
		2 2	A	2 8 1 2	/	2 at 29	
		2 3	Y	3 8 4 6	/	<input checked="" type="checkbox"/> 4638	
		2 4	Y	3 8 4 8	/	4638	
		2 5	A	2 8 1 2	/	2 at 29	
		2 6	Y	3 8 4 9	/	4640	
		2 7	B	4 6 0 1	/	<input checked="" type="checkbox"/> 4902	
		2 8	Y	3 8 3 6	/		
		2 9	Y	3 8 3 7	/		
		3 0	A	2 7 3 3	/	2 N ₁	
		3 1	Y	3 8 4 0	/	<input checked="" type="checkbox"/> 4900 + 2(N ₁ + 1)	

PORT CHESTER, NEW YORK

PREPARED FOR: LGP-30 RPC-4000 USERS ORGANIZATION - POOL			PAGE 16	OF 33
JOB NO.	PROGRAM NO. F2-185	PROGRAM PREPARED BY J.N. Boles	PROGRAM CHECKED BY: POOL Review	DATE
PROBLEM: Regulog II			TRACK 38	

PROGRAM INPUT CODES	STOP	LOCATION	INSTRUCTION		STOP	CONTENTS OF ADDRESS	NOTES
			OPERATION	ADDRESS			
		3 8	B	2 8 0 7		6132	
		3 3	Y	3 8 4 4			
		3 4	R	0 3 0 0			} 24.1
		3 5	U	0 3 0 0			
		3 6	8 0 0 P	[4 9 0 2]		P _{1j}	} Form S _{bo,j}
		3 7	8 0 0 M	[4 9 0 2]		P _{1j} ²	
		3 8	Y	0 0 0 0			
		3 9	8 0 0 P	4 9 0 0		P ₁₁	
		4 0	8 0 0 N	[4 9 0 0]		P _{jj}	
		4 1	R	0 0 0 0		$\sqrt{P_{11} P_{jj} - P_{1j}^2}$	
		4 2	8 0 0 D	4 9 0 0			
		4 3	U	0 0 0 0			
		4 4	8 0 0 M	[6 1 3 2]		S _{o/S_j}	
		4 5	8 0 0 D	6 2 6 0		$\sqrt{N_1 - N_2}$	
		4 6	8 0 0 C	[4 6 3 8]		S _{bo,j}	} Form t _{o,j}
		4 7	8 0 0 B	[4 6 3 6]		b _{o,j}	
		4 8	8 0 0 D	[4 6 3 8]		S _{bo,j}	
		4 9	8 0 0 C	[4 6 4 0]		t _{o,j}	
		5 0	E	0 0 0 0			
		5 1	B	3 8 3 6			} Step address of P _{1j}
		5 2	A	2 8 1 2			
		5 3	Y	3 8 3 6			
		5 4	Y	3 8 3 7			} Step address of P _{jj}
		5 5	B	3 8 4 0			
		5 6	A	4 6 3 1		2 N ₁ + 2	
		5 7	Y	3 8 4 0			} Step address of S _{o/S_j}
		5 8	B	3 8 4 4			
		5 9	A	2 8 1 2		2 at 29	
		6 0	Y	3 8 4 4			
		6 1	B	3 8 4 7			
		6 2	A	2 8 1 6		6 at 29	
		6 3	Y	3 8 4 7			

Royal McBee Corporation
DATA PROCESSING DIV.
PORT CHESTER, NEW YORK

PREPARED FOR: LGP-30 RPC-4000 USERS ORGANIZATION - POOL			PAGE 17 OF 33
JOB NO.	PROGRAM NO. F2-185	PROGRAM PREPARED BY. J.N. Boles	PROGRAM CHECKED BY: POOL Review
PROBLEM: Regulog II			DATE TRACK 39

PROGRAM INPUT CODES	STOP	LOCATION	INSTRUCTION		STOP	CONTENTS OF ADDRESS	NOTES
			OPERATION	ADDRESS			
	/						
	/	<input checked="" type="checkbox"/>					
		3 9 0 0	A	2 8 1 2	/	2 at 29	} Step address of $S_{ho.j}$
		0 1	Y	3 8 4 6	/		
		0 2	Y	3 8 4 8	/		
		0 3	A	2 8 1 2	/	<input checked="" type="checkbox"/> 2 at 29	} Step address of $t_{o.j}$
		0 4	Y	3 8 4 9	/		
		0 5	B	4 6 3 2	/		
		0 6	A	2 8 1 1	/	1 at 29	
		0 7	H	4 6 3 2	/	<input checked="" type="checkbox"/>	
		0 8	S	2 7 3 2	/	N_1	
		0 9	T	3 8 3 4	/		
		1 0	R	0 3 0 0	/		} Form R^2, R
		1 1	U	0 3 0 0	/	<input checked="" type="checkbox"/>	
		1 2	8 0 0 B	4 9 0 0	/	P_{11}	
		1 3	8 0 0 S	6 2 4 8	/	flt. pt. "1"	
		1 4	8 0 0 D	4 9 0 0	/	$P_{11}-1/P_{11}$	
		1 5	8 0 0 H	4 6 2 6	/	<input checked="" type="checkbox"/>	
		1 6	R	0 0 0 0	/		
		1 7	8 0 0 C	4 6 2 8	/		
		1 8	8 0 0 B	6 2 4 8	/	flt. pt. "1"	
		1 9	8 0 0 D	4 9 0 0	/	<input checked="" type="checkbox"/> $1/P_{11}$	
		2 0	U	0 0 0 0	/		} Form $S =$
		2 1	8 0 0 M	6 2 0 8	/	S_0	
		2 2	U	0 0 0 0	/		
		2 3	8 0 0 M	6 2 0 8	/	<input checked="" type="checkbox"/> S_0	
		2 4	U	0 0 0 0	/		} Σ Sq. Res
		2 5	8 0 0 M	6 2 5 0	/	N_2	
		2 6	8 0 0 C	6 2 5 6	/		
		2 7	E	0 0 0 0	/	<input checked="" type="checkbox"/>	
		2 8	B	2 8 1 1	/	1 at 29	} Set counter 1 = 1
		2 9	C	4 6 3 2	/		
		3 0	C	6 2 5 8	/		} Clear spot for b_0
		3 1	C	6 2 5 9	/	<input checked="" type="checkbox"/>	

DATA PROCESSING DIV.
PORT CHESTER, NEW YORK

PREPARED FOR: LGP-30 RPC-4000 USERS ORGANIZATION - POOL			PAGE 18	OF /33
JOB NO.	PROGRAM NO. F2-185	PROGRAM PREPARED BY J.N. Boles	PROGRAM CHECKED BY: POOL Review	DATE
PROBLEM: Regulog II			TRACK 39	

PROGRAM INPUT CODES	STOP	LOCATION	INSTRUCTION		STOP	CONTENTS OF ADDRESS	NOTES
			OPERATION	ADDRESS			
	/						
	/	<input checked="" type="checkbox"/>					
		3,9,3,2	B	2818	/	4826	Lo \bar{X}_2
		3,3	Y	3938	/		
		3,4	B	4602	/	4636	Lo $b_{0.2}$
		3,5	Y	3939	/	<input checked="" type="checkbox"/>	
		3,6	R	0300	/		} 24.1
		3,7	U	0300	/		
		3,8	800 P	[4826]	/	\bar{X}_j	
		3,9	800 M	[4636]	/	<input checked="" type="checkbox"/> $b_{0.j}$	
		4,0	800 A	6258	/		
		4,1	800 C	6258	/		
		4,2	E	0000	/		
		4,3	B	3938	/	<input checked="" type="checkbox"/>	
		4,4	A	2812	/	2 at 29	
		4,5	Y	3938	/		
		4,6	B	3939	/		
		4,7	A	2816	/	<input checked="" type="checkbox"/> 6 at 29	
		4,8	Y	3939	/		
		4,9	B	4632	/		
		5,0	A	2811	/	1 at 29	
		5,1	H	4632	/	<input checked="" type="checkbox"/>	
		5,2	S	2732	/	N_j	
		5,3	T	3936	/		
		5,4	R	0300	/		} 24.1
		5,5	U	0300	/	<input checked="" type="checkbox"/>	
		5,6	800 B	6258	/	$\Sigma b_{0.j} \bar{X}_j$	
		5,7	Y	0000	/		
		5,8	800 A	4824	/	\bar{X}_0	
		5,9	800 C	6258	/	<input checked="" type="checkbox"/> b_0	
		6,0	E	0000	/		
		6,1	U	0000	/		Exit
		6,2			/		
		6,3			/	<input checked="" type="checkbox"/>	

Royal McBee Corporation
 DATA PROCESSING DIV.
 PORT CHESTER, NEW YORK

PREPARED FOR: LGP-30 RPC-4000 USERS ORGANIZATION - POOL			PAGE 19	OF 33
JOB NO.	PROGRAM NO. F2-185	PROGRAM PREPARED BY: J.N. Boles	PROGRAM CHECKED BY: POOL Review	DATE
PROBLEM: Regulog II			TRACK 40	

PROGRAM INPUT CODES	STOP	LOCATION	INSTRUCTION		STOP	CONTENTS OF ADDRESS	NOTES
			OPERATION	ADDRESS			
; 000 4000	/						
/ 000 0000	/	⊗					
		40 0 0	B	2817	/	4824	} Clear spot for means
		0 1	Y	3237	/		
		0 2	Y	3238	/		
		0 3	B	2733	/	⊗ 2N ₁	
		0 4	C	3249	/		
		0 5	R	3248	/	Clear	
		0 6	U	3235	/		
		0 7	B	4600	/	⊗ 4900	
		0 8	Y	3237	/		
		0 9	Y	3238	/		} Clear spot
		1 0	B	2735	/	2N ₁ 2	
		1 1	C	3249	/	⊗	for X'X
		1 2	R	3248	/	} clear	
		1 3	U	3235	/		
		1 4	B	4607	/	3423	} Link data input & X'X Subroutines
		1 5	Y	3422	/	⊗	
		1 6	C	4635	/		} clear counter no. 4
		1 7	C	4635	/		
		1 8	B	2737	/	k	
		1 9	C	3233	/	⊗	
		2 0	B	2732	/	N ₁	} Printing format for transformed
		2 1	C	3234	/		
		2 2	B	2807	/	6132	
		2 3	Y	3212	/	⊗	} variables.
		2 4	R	3522	/		
		2 5	U	3306	/		} Input data and form X'X and ΣX
		2 6	B	4635	/	counter 4	
		2 7	A	2811	/	⊗ 1 at 29	} increment counter 4
		2 8	H	4635	/		
		2 9	S	2736	/	N ₂	
		3 0	T	4022	/		
		3 1	Z	0400	/	⊗	Stop

PORT CHESTER, NEW YORK

PREPARED FOR LGP-30 RPC-4000 USERS ORGANIZATION - POOL			PAGE 20	OF 33
JOB NO.	PROGRAM NO. F2-185	PROGRAM PREPARED BY J.N. Boles	PROGRAM CHECKED BY: POOL Review	DATE
PROBLEM: Regulog II			TRACK 40	

PROGRAM INPUT CODES	STOP	LOCATION	INSTRUCTION		STOP	CONTENTS OF ADDRESS	NOTES
			OPERATION	ADDRESS			
	/						
	/	⊗					
		4 0 3 2	B	2 8 1 7	/	4824	
		3 3	Y	3 2 1 2	/		
		3 4	R	3 1 0 0	/		} Alphanumeric
		3 5	U	3 1 0 0	/	⊗	
, 0 0 0 0 0 0 3	'	3 6	2 0 2 0	2 0 3 0	/		
		3 7	1 0 4 4	0 6 4 A	/		ΣX
		3 8	0 8 V Q	0 0 0 0	/		
		3 9	R	3 2 3 1	/	⊗	} print ΣX _i
		4 0	U	3 2 0 0	/		
		4 1	R	3 1 0 0	/		} alphanumeric
		4 2	U	3 1 0 0	/		
, 0 0 0 0 0 0 4	'	4 3	2 0 2 0	3 0 1 0	/	⊗	
		4 4	4 A 4 0	4 A 0 6	/		X'X matrix
		4 5	3 F 7 2	5 F 1 F	/		
		4 6	2 2 4 A	0 8 V Q	/		
		4 7	R	3 3 0 5	/	⊗	} print X'X by rows
		4 8	U	3 2 5 0	/		
		4 9	Z	0 4 0 0	/		Stop
		5 0	R	3 7 2 1	/		} Compute \bar{X}_i, S_{ij}
		5 1	U	3 5 2 3	/	⊗	
		5 2	B	2 8 1 7	/	4824	} Printing address for \bar{X}_i
		5 3	Y	3 2 1 2	/		
		5 4	R	3 1 0 0	/		} alphanumeric
		5 5	U	3 1 0 0	/	⊗	
, 0 0 0 0 0 0 6	'	5 6	2 0 2 0	2 0 3 0	/		
		5 7	1 0 7 2	1 F 2 2	/		arithmetic means
		5 8	5 F 6 2	3 F 4 F	/		
		5 9	5 F 2 2	6 F 0 6	/	⊗	
		6 0	3 F 4 F	7 2 3 2	/		
		6 1	7 F 0 8	V Q 0 0	/		
		6 2	R	3 2 3 1	/		
		6 3	U	3 2 0 0	/	⊗	

Royal McBee Corporation
 DATA PROCESSING DIV.
 PORT CHESTER, NEW YORK

PREPARED FOR: LGP-30 RPC-4000 USERS ORGANIZATION - POOL				PAGE 21	OF / 33
JOB NO.	PROGRAM NO. F2-185	PROGRAM PREPARED BY: J.N. Boles	PROGRAM CHECKED BY: POOL Review	DATE	
PROBLEM: Regulog II				TRACK 41	

PROGRAM INPUT CODES	STOP	LOCATION	INSTRUCTION		STOP	CONTENTS OF ADDRESS	NOTES
			OPERATION	ADDRESS			
	/						
	/	<input checked="" type="checkbox"/>					
		4 1 0 0	B	2 8 0 9	/	6208	} Printing address for S _i
		0 1	Y	3 2 1 2	/		
		0 2	R	3 1 0 0	/		} Alphanumeric
		0 3	U	3 1 0 0	/	<input checked="" type="checkbox"/>	
, 0 0 0 0 0 0 7	/	0 4	2 0 2 0	2 0 3 0	/		
		0 5	1 0 7 F	5 F 7 2	/		
		0 6	3 2 2 F	7 2 1 F	/		Standard
		0 7	2 F 0 6	2 F 4 F	/	<input checked="" type="checkbox"/>	Deirations
		0 8	3 A 2 2	7 2 5 F	/		
		0 9	2 2 4 6	3 2 7 F	/		
		1 0	0 8 V Q	0 0 0 0	/		
		1 1	R	3 2 3 1	/	<input checked="" type="checkbox"/>	} Print S _i
		1 2	U	3 2 0 0	/		
		1 3	R	3 1 0 0	/		} Alphanumeric
		1 4	U	3 1 0 0	/		
, 0 0 0 0 0 0 4	/	1 5	2 0 2 0	2 0 3 0	/	<input checked="" type="checkbox"/>	
		1 6	1 0 1 F	0 6 3 F	/		R Matrix
		1 7	7 2 5 F	1 F 2 2	/		
		1 8	4 A 0 8	V Q 0 0	/		
		1 9	R	3 3 0 5	/	<input checked="" type="checkbox"/>	} Print R Matrix by rows
		2 0	U	3 2 5 0	/		
		2 1	Z	0 8 0 0	/		Stop
		2 2	B	2 7 3 2	/	N ₁ at 29	} Form codeword for 30.0
		2 3	N	4 6 0 8	/	<input checked="" type="checkbox"/> 1 at 17	
		2 4	C	4 1 2 9	/	N ₁ at 15	
		2 5	B	4 6 0 0	/	4900	
		2 6	Y	4 1 2 9	/		
		2 7	R	2 5 1 4	/	<input checked="" type="checkbox"/>	} Invert R Matrix
		2 8	U	2 5 0 0	/		
		2 9	(/	Codeword for 30.0	
		3 0	R	3 1 0 0	/		} Alphanumeric
		3 1	U	3 1 0 0	/	<input checked="" type="checkbox"/>	

PREPARED FOR: LGP-30 RPC-4000 USERS ORGANIZATION - POOL			PAGE 22	OF / 33
JOB NO.	PROGRAM NO. F2-185	PROGRAM PREPARED BY J.N. Boles	PROGRAM CHECKED BY POOL Review	DATE
PROBLEM: Regulog II			TRACK 41	

PROGRAM INPUT CODES	STOP	LOCATION	INSTRUCTION		STOP	CONTENTS OF ADDRESS	NOTES
			OPERATION	ADDRESS			
	/						
	/	<input checked="" type="checkbox"/>					
, 0 0 0 0 0 0 4	/	4 1 3 2	2 0 2 0	2 0 3 0	/		
		3 3	1 0 1 F	0 6 2 2	/		R Inverse
		3 4	3 2 3 A	4 F 1 F	/		
		3 5	7 F 4 F	0 8 V Q	/	<input checked="" type="checkbox"/>	
		3 6	R	3 3 0 5	/		} Print R ⁻¹
		3 7	U	3 2 5 0	/		} by rows
		3 8	Z	0 4 0 0	/		Stop
		3 9	R	3 9 6 1	/	<input checked="" type="checkbox"/>	} Compute
		4 0	U	3 7 2 2	/		} Regression statistics
		4 1	R	3 1 0 0	/		} alphanumeric
		4 2	U	3 1 0 0	/		
, 0 0 0 0 0 0 6	/	4 3	2 0 2 0	2 0 1 0	/	<input checked="" type="checkbox"/>	
		4 4	6 F 4 6	3 2 7 F	/		
		4 5	5 F 7 2	3 2 5 F	/		
		4 6	0 6 5 f	4 F 1 F	/		
		4 7	3 F 0 6	1 6 0 8	/	<input checked="" type="checkbox"/>	
		4 8	V Q 0 0	0 0 0 0	/		
		4 9	R	0 3 0 0	/		} 24.1
		5 0	U	0 3 0 0	/		
		5 1	8 0 0 B	6 2 5 8	/	<input checked="" type="checkbox"/>	b ₀
		5 2	P	0 0 0 0	/		
		5 3	E	0 0 0 0	/		
		5 4	B	2 7 3 3	/	2N ₁	
		5 5	A	2 7 3 2	/	<input checked="" type="checkbox"/>	N ₁
		5 6	S	2 8 1 3	/	3 at 29	} Printing format
		5 7	C	3 2 3 4	/	3N ₁ - 3	for b _{0.j} ,
		5 8	B	2 8 1 3	/	3 at 29	
		5 9	C	3 2 3 3	/	<input checked="" type="checkbox"/>	k
		6 0	B	4 6 0 2	/	4636	S _{b_{0.j}} ,
		6 1	Y	3 2 1 2	/		t _j
		6 2	R	3 1 0 0	/		} alphanumeric
		6 3	U	3 1 0 0	/	<input checked="" type="checkbox"/>	

Royal McBee Corporation
 DATA PROCESSING DIV.
 PORT CHESTER, NEW YORK

PREPARED FOR: LGP-30 RPC-4000 USERS ORGANIZATION - POOL				PAGE 23	OF 33
JOB NO.	PROGRAM NO. F2-185	PROGRAM PREPARED BY: J.N. Boles	PROGRAM CHECKED BY: POOL Review	DATE	
PROBLEM: Regulog II				TRACK 42	

PROGRAM INPUT CODES	STOP	LOCATION	INSTRUCTION		STOP	CONTENTS OF ADDRESS	NOTES
			OPERATION	ADDRESS			
	/						
, 0 0 0 0 0 1 5	/	4 2 0 0	2 0 2 0	2 0 1 0	/		Regression
		0 1	0 6 1 F	4 F 5 J	/		coefficient
		0 2	1 F 4 F	7 F 7 F	/		
		0 3	2 2 4 6	3 2 3 0	/	X	
		0 4	7 F 5 F	7 2 3 2	/		
		0 5	2 F 7 2	1 F 2 F	/		Standard errors
		0 6	3 0 0 6	0 6 5 F	/		
		0 7	2 0 6 F	4 6 4 F	/	X	
		0 8	5 4 5 4	2 2 6 F	/		
		0 9	2 2 4 F	3 2 5 F	/		
		1 0	7 F 3 0	0 6 4 F	/		T ratios
		1 1	1 F 1 F	4 6 1 F	/	X	
		1 2	7 F 3 0	1 F 7 2	/		
		1 3	5 F 2 2	4 6 7 F	/		
		1 4	0 8 V Q	0 0 0 0	/		
		1 5	R	3 2 3 1	/	X	} Print
		1 6	U	3 2 0 0	/		
		1 7	R	3 1 0 0	/		} Alphanumeric
		1 8	U	3 1 0 0	/		
, 0 0 0 0 0 0 6	/	1 9	2 0 2 0	2 0 1 0	/	X	
		2 0	4 4 0 6	7 f 7 4	/		
		2 1	5 2 7 2	1 f 4 f	/		Σ Squared
		2 2	2 f 0 6	1 f 4 f	/		Res =
		2 3	7 f 0 6	1 6 0 8	/	X	
		2 4	0 6 V Q	0 0 0 0	/		
		2 5	R	0 3 0 0	/		} 24.1
		2 6	U	0 3 0 0	/		
		2 7	8 0 0 B	6 2 5 6	/	X	S
		2 8	P	0 0 0 0	/		
		2 9	E	0 0 0 0	/		
		3 0	R	3 1 0 0	/		} Alphanumeric
		3 1	U	3 1 0 0	/	X	

DATA PROCESSING DIV.
PORT CHESTER, NEW YORK

PREPARED FOR: LGP-30 RPC-40000 USERS ORGANIZATION - POOL			PAGE 24	OF 33
JOB NO.	PROGRAM NO. F2-185	PROGRAM PREPARED BY J.N. Boles	PROGRAM CHECKED BY POOL Review	DATE
PROBLEM: Regulog II			TRACK 42	

PROGRAM INPUT CODES	STOP	LOCATION	INSTRUCTION		STOP	CONTENTS OF ADDRESS	NOTES
			OPERATION	ADDRESS			
	/						
	/	<input checked="" type="checkbox"/>					
, 0 0 0 0 0 0 6	/	4 2 3 2	2 0 2 0	2 0 1 0	/		
		3 3	0 6 0 6	1 F 0 6	/		R Squares
		3 4	7 f 7 4	5 2 7 2	/		
		3 5	1 f 4 f	2 f 3 0	/	<input checked="" type="checkbox"/>	R
		3 6	0 6 0 6	0 6 1 f	/		
		3 7	2 0 2 0	0 8 V Q	/		
		3 8	R	0 3 0 0	/		} 24.1
		3 9	U	0 3 0 0	/	<input checked="" type="checkbox"/>	
		4 0	8 0 0 B	4 6 2 6	/	R ²	
		4 1	P	0 0 0 0	/		
		4 2	R	0 0 0 0	/		
		4 3	P	0 0 0 0	/	<input checked="" type="checkbox"/>	
		4 4	E	0 0 0 0	/		
		4 5	Z	0 0 0 0	/		Stop
		4 6	B	4 6 0 0	/	4900	} Clear spot for
		4 7	Y	3 2 3 7	/	<input checked="" type="checkbox"/>	
		4 8	Y	3 2 3 8	/		
		4 9	B	2 7 3 6	/	N ₂	} Y' and Y-Y'
		5 0	A	2 7 3 6	/	N ₂	
		5 1	H	4 6 3 0	/	<input checked="" type="checkbox"/> 2N ₂	
		5 2	A	4 6 3 0	/	2N ₂	
		5 3	C	3 2 4 9	/	4N ₂	
		5 4	R	3 2 4 8	/	} Clear	
		5 5	U	3 2 3 5	/	<input checked="" type="checkbox"/>	
		5 6	C	4 6 3 5	/		} Clear counter 4
		5 7	C	4 6 3 5	/		
		5 8	B	2 8 0 8	/	6134	
		5 9	Y	4 3 1 8	/	<input checked="" type="checkbox"/>	
		6 0	B	4 6 0 2	/	4636	
		6 1	Y	4 3 1 9	/		
		6 2	B	4 6 0 0	/	4900	
		6 3	Y	4 3 2 0	/	<input checked="" type="checkbox"/>	

Royal McBee Corporation
 DATA PROCESSING DIV.
 PORT CHESTER, NEW YORK

PREPARED FOR: LGP-30 RPC-4000 USERS ORGANIZATION - POOL			PAGE 25	OF / 33
JOB NO.	PROGRAM NO. F2-185	PROGRAM PREPARED BY: J.N. Boles	PROGRAM CHECKED BY: POOL Review	DATE
PROBLEM: Regulog II			TRACK 43	

PROGRAM INPUT CODES	STOP	LOCATION	INSTRUCTION		STOP	CONTENTS OF ADDRESS	NOTES
			OPERATION	ADDRESS			
	/						
	/	<input checked="" type="checkbox"/>					
		4300	Y	4321	/		
		01	Y	4336	/		
		02	Y	4338	/		
		03	Y	4340	/	<input checked="" type="checkbox"/>	
		04	A	2812	/	2 at 29	
		05	Y	4341	/		
		06	B	2737	/	k	Printing
		07	C	3233	/	<input checked="" type="checkbox"/>	
		08	B	2732	/	N ₁	for
		09	C	3234	/		transformed
		10	B	2807	/	6132	variables
		11	Y	3212	/	<input checked="" type="checkbox"/>	
		12	B	2811	/	1 at 29	Set counter no. 3
		13	C	4634	/		
		14	R	3422	/		Input
		15	U	3306	/	<input checked="" type="checkbox"/>	
		16	R	0300	/		24.1
		17	U	0300	/		
		18	8,00 P	[6134]	/	X _j	
		19	8,00 M	[4636]	/	<input checked="" type="checkbox"/> b _{0,j}	N ₁ -1
		20	8,00 A	[4900]	/	Σ b _{0,j} X _j	Form Σ b _{0,j} X _j
		21	800 C	[4900]	/		j=1
		22	E	0000	/		
		23	B	4318	/	<input checked="" type="checkbox"/>	
		24	A	2812	/	2 at 29	
		25	Y	4318	/		
		26	B	4319	/		
		27	A	2816	/	<input checked="" type="checkbox"/> 6 at 29	
		28	Y	4319	/		
		29	B	4634	/	counter 3	
		30	A	2811	/	1 at 29	
		31	H	4634	/	<input checked="" type="checkbox"/>	

PREPARED FOR: LGP-30 RPC-4000 USERS ORGANIZATION - POOL			PAGE 26	OF / 33
JOB NO.:	PROGRAM NO. F2-185	PROGRAM PREPARED BY J.N. Boles	PROGRAM CHECKED BY: POOL Review	DATE
PROBLEM: Regulog II			TRACK 43	

PROGRAM INPUT CODES	STOP	LOCATION	INSTRUCTION		STOP	CONTENTS OF ADDRESS	NOTES
			OPERATION	ADDRESS			
	/						
	/	4 3					
		3 2	S	2 7 3 2	/	N ₁	
		3 3	T	4 3 1 6	/		
		3 4	R	0 3 0 0	/		} 24.1
		3 5	U	0 3 0 0	/	⊗	
		3 6	8 0 0 B	[4 9 0 0]	/	$\sum b_{0..j} X_j$	
		3 7	8 0 0 A	6 2 5 8	/	b ₀	
		3 8	8 0 0 C	[4 9 0 0]	/	Y'	
		3 9	8 0 0 B	6 1 3 2	/	⊗ X ₀ = Y	
		4 0	8 0 0 S	[4 9 0 0]	/	Y'	
		4 1	8 0 0 C	[4 9 0 2]	/	Y - Y'	
		4 2	E	0 0 0 0	/		
		4 3	B	4 3 4 0	/	⊗	
		4 4	A	2 8 1 4	/	4 at 29	
		4 5	Y	4 3 4 0	/		
		4 6	Y	4 3 3 8	/		
		4 7	Y	4 3 3 6	/	⊗	
		4 8	Y	4 3 2 0	/		
		4 9	Y	4 3 2 1	/		
		5 0	A	2 8 1 2	/	2 at 29	
		5 1	Y	4 3 4 1	/	⊗	
		5 2	B	2 8 0 8	/	6134	
		5 3	Y	4 3 1 8	/		
		5 4	B	4 6 0 2	/	4636	
		5 5	Y	4 3 1 9	/	⊗	
		5 6	B	4 6 3 5	/	counter 4	
		5 7	A	2 8 1 1	/	1 at 29	
		5 8	H	4 6 3 5	/		
		5 9	S	2 7 3 6	/	⊗ N ₂	
		6 0	T	4 3 1 0	/		
		6 1	Z	0 4 0 0	/		Stop
		6 2	B	4 6 0 0	/	4900	
		6 3	Y	3 2 1 2	/	⊗	

Royal McBee Corporation
 DATA PROCESSING DIV.
 FORT CHESTER, NEW YORK

PREPARED FOR: LGP-30 RPC-4000 USERS ORGANIZATION - POOL			PAGE 27	OF 33
JOB NO.	PROGRAM NO. F2-135	PROGRAM PREPARED BY J.N. Boles	PROGRAM CHECKED BY: POOL Review	DATE
PROBLEM: Regulog II			TRACK 44	

PROGRAM INPUT CODES	STOP	LOCATION	INSTRUCTION		STOP	CONTENTS OF ADDRESS	NOTES
			OPERATION	ADDRESS			
	/						
	/	<input checked="" type="checkbox"/>					
		4,4 0 0	B	4 6 3 0	/	2N ₂	} Printing format
		0 1	C	3 2 3 4	/		
		0 2	B	2 8 1 2	/	2 at 29	}
		0 3	C	3 2 3 3	/	<input checked="" type="checkbox"/>	
		0 4	R	3 1 0 0	/		} alphanumeric
		0 5	U	3 1 0 0	/		
, 0 0 0 0 0 0 5	/	0 6		2 0 2 0 2 0 1 0	/		
		0 7		0 6 0 6 1 2 4 0	/	<input checked="" type="checkbox"/>	
		0 8		3 0 0 6 1 2 0 6	/		Y'
		0 9		0 8 0 A 1 0 0 6	/		Y-Y'
		1 0		1 2 4 0 0 8 V Q	/		
		1 1	R	3 2 3 1	/	<input checked="" type="checkbox"/>	} Print
		1 2	U	3 2 0 0	/		
		1 3	C	6 2 5 6	/		} Clear spot for Σ Sq. Res
		1 4	C	6 2 5 6	/		
		1 5	C	6 2 5 7	/	<input checked="" type="checkbox"/>	
		1 6	C	4 6 3 2	/		Clear counter 1
		1 7	B	4 6 0 1	/	4902	
		1 8	Y	4 4 2 2	/		
		1 9	Y	4 4 2 3	/	<input checked="" type="checkbox"/>	
		2 0	R	0 3 0 0	/		} 24.1
		2 1	U	0 3 0 0	/		
		2 2		8 0 0 P [4 9 0 2]	/	Y-Y'	
		2 3		8 0 0 M [4 9 0 2]	/	<input checked="" type="checkbox"/> (Y-Y') ²	Form
		2 4		8 0 0 A 6 2 5 6	/		Σ (Y-Y') ²
		2 5		8 0 0 C 6 2 5 6	/		
		2 6	E	0 0 0 0	/		
		2 7	B	4 4 2 2	/	<input checked="" type="checkbox"/>	
		2 8	A	2 8 1 4	/	4 at 29	
		2 9	Y	4 4 2 2	/		
		3 0	Y	4 4 2 3	/		
		3 1	B	4 6 3 2	/	<input checked="" type="checkbox"/> counter 1	

CARRIAGE RETURN

DATA PROCESSING DIV.
PORT CHESTER, NEW YORK

PREPARED FOR: LGP-30 RPC-4000 USERS ORGANIZATION - POOL			PAGE 28 OF 33
JOB NO.	PROGRAM NO. F2-185	PROGRAM PREPARED BY J.N. Boles	PROGRAM CHECKED BY: POOL Review
PROBLEM: Regulog II			DATE
			TRACK 44

PROGRAM INPUT CODES	STOP	LOCATION	INSTRUCTION		STOP	CONTENTS OF ADDRESS	NOTES
			OPERATION	ADDRESS			
	/						
	/	44					
		44 3 2	A	2 8 1 1	/	1 at 29	
		3 3	H	4 6 3 2	/		
		3 4	S	2 7 3 6	/	N ₂	
		3 5	T	4 4 2 0	/		
		3 6	R	3 1 0 0	/		} alphanumeric
		3 7	U	3 1 0 0	/		
, 0 0 0	0 0 0 6	3 8	2 0 2 0	2 0 1 0	/		
		3 9	4 4 0 6	7 F 7 4	/		
		4 0	5 2 7 2	1 F 4 F	/		
		4 1	2 F 0 6	1 F 4 F	/		
		4 2	7 F 0 6	1 6 0 8	/		
		4 3	0 6 V Q	0 0 0 0	/		
		4 4	R	0 3 0 0	/		} 24.1
		4 5	U	0 3 0 0	/		
		4 6	8 0 0 B	6 2 5 6	/	S	
		4 7	P	0 0 0 0	/		
		4 8	E	0 0 0 0	/		
		4 9	Z	1 6 0 0	/		Stop
		5 0	C	4 6 3 2	/		} clear
		5 1	C	4 6 3 2	/		} counter 1
		5 2	B	4 6 0 0	/	4900	
		5 3	Y	4 4 5 7	/		
		5 4	Y	4 4 5 9	/		
		5 5	R	0 3 0 0	/		} 24.1
		5 6	U	0 3 0 0	/		
		5 7	8 0 0 B	[4 9 0 0]	/		
		5 8	H	0 0 0 0	/		antilog
		5 9	8 0 0 C	[4 9 0 0]	/		
		6 0	E	0 0 0 0	/		
		6 1	B	4 4 5 7	/		
		6 2	A	2 8 1 2	/	2 at 29	
		6 3	U	4 5 4 5	/		

Royal McBee Corporation
 DATA PROCESSING DIV.
 PORT CHESTER, NEW YORK

PREPARED FOR: LGP-30 RPC-4000 USERS ORGANIZATION - POOL			PAGE 29 OF 33
JOB NO.	PROGRAM NO. F2-185	PROGRAM PREPARED BY J.N. Boles	PROGRAM CHECKED BY: POOL Review
PROBLEM: Regulog II - - Manual Printing Subroutine			DATE TRACK 45

PROGRAM INPUT CODES	STOP	LOCATION	INSTRUCTION		STOP	CONTENTS OF ADDRESS	NOTES
			OPERATION	ADDRESS			
	/						
	/	<input checked="" type="checkbox"/>					
		45 0 0	P	1 6 0 0	/	c.r.	
		0 1	Z	0 0 0 0	/		
		0 2	P	1 7 0 0	/	"i"	
		0 3	Z	0 0 0 0	/	<input checked="" type="checkbox"/>	
		0 4	P	0 3 0 0	/	space	
		0 5	Z	0 0 0 0	/		
		0 6	P	0 0 0 0	/	Prepare to read	
		0 7	C	4 5 4 4	/	<input checked="" type="checkbox"/> temporary	
		0 8	I	0 0 0 0	/		
		0 9	R	4 5 3 8	/		} Binarize
		1 0	U	4 5 2 9	/		
		1 1	P	1 6 0 0	/	<input checked="" type="checkbox"/>	
		1 2	Y	3 2 1 2	/	Initial address	
		1 3	Z	0 0 0 0	/		
		1 4	P	2 5 0 0	/	"n"	
		1 5	Z	0 0 0 0	/	<input checked="" type="checkbox"/>	
		1 6	P	0 3 0 0	/	space	
		1 7	Z	0 0 0 0	/		
		1 8	P	0 0 0 0	/	Prepare to read	
		1 9	C	4 5 4 4	/	<input checked="" type="checkbox"/> temporary	
		2 0	I	0 0 0 0	/		
		2 1	R	4 5 3 8	/		} Binarize
		2 2	U	4 5 2 9	/		
		2 3	P	1 6 0 0	/	<input checked="" type="checkbox"/>	
		2 4	C	3 2 3 4	/	No. of words	
		2 5	Z	0 0 0 0	/		
		2 6	R	3 2 3 1	/		} Print
		2 7	U	3 2 0 0	/	<input checked="" type="checkbox"/>	
		2 8	U	4 5 0 0	/		
		2 9	N	4 5 4 3	/		
		3 0	H	4 5 4 4	/		
		3 1	E	4 5 3 9	/	<input checked="" type="checkbox"/>	

DATA PROCESSING DIV.
PORT CHESTER, NEW YORK

PREPARED FOR: LGP-30 RPC-4000 USERS ORGANIZATION - POOL			PAGE 30	OF / 33
JOB NO.	PROGRAM NO. F2-185	PROGRAM PREPARED BY J.N. Boles	PROGRAM CHECKED BY: POOL Review	DATE
PROBLEM: Regulog II			TRACK 45	

PROGRAM INPUT CODES	STOP	LOCATION	INSTRUCTION		STOP	CONTENTS OF ADDRESS	NOTES
			OPERATION	ADDRESS			
	/						
	/	⊗					
		4,5,3,2	M	4,5,4,1	/		
		3,3	A	4,5,4,4	/		
		3,4	H	4,5,4,4	/		
		3,5	E	4,5,4,0	/	⊗	
		3,6	M	4,5,4,2	/		
		3,7	A	4,5,4,4	/		
		3,8	U	[0,0,0,0]	/		
,000 0004	'	3,9	3	J,3,J,0	/	⊗	
		4,0	3	W,J,0,0	/		
		4,1	K	0,0,0,0	/		
		4,2	F	0,0,0,0	/		
		4,3	Z	0,0,0,1	/	⊗	
		4,4	()	/		
		4,5	Y	4,4,5,7	/		
		4,6	Y	4,4,5,9	/		
		4,7	B	4,6,3,2	/	⊗ counter 1	
		4,8	A	2,8,1,1	/	1 at 29	
		4,9	H	4,6,3,2	/		
		5,0	S	4,6,3,0	/	2N ₂	
		5,1	T	4,4,5,5	/	⊗	
		5,2	R	3,1,0,0	/		} Alphanumeric
		5,3	U	3,1,0,0	/		
,000 0004	'	5,4	2	0,2,0,2	/		
		5,5	7	2,3,2,5	/	⊗	
		5,6	0	J,4,6,5	/	J,7,F	
		5,7	0	8,V,Q	/	0,0,0,0	
		5,8	B	4,6,0,0	/	4900	
		5,9	Y	3,2,1,2	/	⊗	
		6,0	R	3,2,3,1	/		} Print
		6,1	U	3,2,0,0	/		
		6,2	Z	0,0,0,0	/		Stop
		6,3			/	⊗	

Royal McBee Corporation
 DATA PROCESSING DIV.
 PORT CHESTER, NEW YORK

PREPARED FOR: LGP-30 RPC-4000 USERS ORGANIZATION - POOL			PAGE 31 OF 33
JOB NO.	PROGRAM NO F2-185	PROGRAM PREPARED BY J.N. Boles	PROGRAM CHECKED BY: POOL Review
PROBLEM: Regulog II			DATE TRACK 46

PROGRAM INPUT CODES	STOP	LOCATION	INSTRUCTION		STOP	CONTENTS OF ADDRESS	NOTES
			OPERATION	ADDRESS			
	/						
	/	<input checked="" type="checkbox"/>					
		4 6 0 0	Z	4 9 0 0	/	1st word of X'X, R, R ⁻¹	
		0 1	Z	4 9 0 2	/	2nd " " " " "	
		0 2	Z	4 6 3 6	/	1st regression coeff.	
		0 3	Z	3 2 0 0	/	<input checked="" type="checkbox"/>	
		0 4	Z	3 2 0 4	/		
		0 5	Z	2 7 4 0	/		
		0 6	Z	2 7 4 1	/		
		0 7	Z	3 4 2 3	/	<input checked="" type="checkbox"/>	
, 0 0 0 0 0 0 1	'	0 8		4 0 0 0	/	1 at 17	
		0 9	Z	6 2 5 8	/		
		1 0	Z	6 2 5 6	/		
		1 1	Z	4 6 2 6	/	<input checked="" type="checkbox"/>	
		1 2			/		
		1 3			/		
		1 4			/		
		1 5			/	<input checked="" type="checkbox"/>	
		1 6			/		
		1 7			/		
		1 8			/		
		1 9			/	<input checked="" type="checkbox"/>	
		2 0			/		
		2 1			/		
		2 2			/		
		2 3			/	<input checked="" type="checkbox"/>	
		2 4			/		
		2 5			/		
		2 6	(R ²)	/	
		2 7	()	/	<input checked="" type="checkbox"/>
		2 8	(R)	/	
		2 9	()	/	
		3 0	(2N ₂)	/	
		3 1	(2N ₁ + 2)	/	<input checked="" type="checkbox"/>

DATA PROCESSING DIV.
PORT CHESTER, NEW YORK

PREPARED FOR: LGP-30 RPC-4000 USERS ORGANIZATION - POOL			PAGE 32	OF / 33
JOB NO.	PROGRAM NO. F2-185	PROGRAM PREPARED BY J.N. Boles	PROGRAM CHECKED BY: POOL Review	DATE
PROBLEM: Regulog II			TRACK 46	

PROGRAM INPUT CODES	STOP	LOCATION	INSTRUCTION		STOP	CONTENTS OF ADDRESS	NOTES
			OPERATION	ADDRESS			
	/				/		
	/	<input checked="" type="checkbox"/>			/		
		4, 6, 3, 2	()	/	no. 1	} counter registers
		3, 3	()	/	no. 2	
		3, 4	()	/	no. 3	
		3, 5	()	/	<input checked="" type="checkbox"/> no. 4	
		3, 6			/	Regression coefficients, standard errors, T ratios	
		3, 7			/		
		3, 8			/		
		3, 9			/	<input checked="" type="checkbox"/>	
		4, 0			/		
		4, 1			/		
		4, 2			/		
		4, 3			/	<input checked="" type="checkbox"/>	
		4, 4			/		
		4, 5			/		
		4, 6			/	<input checked="" type="checkbox"/>	
		4, 7			/	<input checked="" type="checkbox"/>	
		4, 8			/		
		4, 9			/		
		5, 0			/	<input checked="" type="checkbox"/>	
		5, 1			/	<input checked="" type="checkbox"/>	
		5, 2			/		
		5, 3			/		
		5, 4			/	<input checked="" type="checkbox"/>	
		5, 5			/	<input checked="" type="checkbox"/>	
		5, 6			/		
		5, 7			/		
		5, 8			/	<input checked="" type="checkbox"/>	
		5, 9			/	<input checked="" type="checkbox"/>	
		6, 0			/		
		6, 1			/		
		6, 2			/		
		6, 3			/	<input checked="" type="checkbox"/>	

Royal McBee Corporation
 DATA PROCESSING DIV.
 PORT CHESTER, NEW YORK

PREPARED FOR				PAGE	OF
LGP-30 RPC-4000 USERS ORGANIZATION - POOL				33	33
JOB NO.	PROGRAM NO.	PROGRAM PREPARED BY	PROGRAM CHECKED BY	DATE	
	F2-185	J.N. Boles	POOL Review		
PROBLEM:				TRACK	
Regulog II				62	

PROGRAM INPUT CODES	STOP	LOCATION	INSTRUCTION		STOP	CONTENTS OF ADDRESS	NOTES
			OPERATION	ADDRESS			
	/						
	/	62			/		
		3 2			/		
		3 3			/		
		3 4			/		
		3 5			/	X	
		3 6			/		
		3 7			/		
		3 8			/		
		3 9			/	X	
		4 0			/		
		4 1			/		
		4 2			/		
		4 3			/	X	
		4 4			/		
		4 5			/		
		4 6			/		
		4 7			/	X	
		4 8	(1)	/	} Floating Point Constants
		4 9	()	/	
		5 0	(N2)	/	
		5 1	()	/	
		5 2	(N ₂ ²)	/	
		5 3	()	/	
		5 4	(N2-N1)	/	
		5 5	()	/	
		5 6	(S)	/	
		5 7	()	/	
		5 8	(b ₀)	/	
		5 9	()	/	
		6 0	($\sqrt{N2-N1}$)	/	
		6 1	()	/	
		6 2				/	
		6 3				/	

X CARRIAGE RETURN

DATA PROCESSING DIV. PORT CHESTER, NEW YORK