

Windows® 95 Desktop Keyboard – FKB8725 Series

Advanced Design, Low Cost, High Quality and Reliability

The Fujitsu FKB8725 series brings the added convenience of 3 new keys to the highly advanced design of the FKB8720 family. These new keys, Left Windows, Right Windows, and Application Menu, will provide the user with enhanced access to Windows® 95 system and application functions. The FKB8725 series membrane technology keyboards, make it an ideal keyboard solution for mid-range and low-end system applications. Featuring a curved keyswitch panel, ultra-silent full-travel key action with excellent tactile feedback, and a full-size key layout in a minimum footprint design, the FKB8725 series offers unsurpassed value from Fujitsu. Manufactured to ISO9002 standards, the FKB8725 meets FCC Class B, UL1950, CSA950 and GS requirements.



FKB8725 Series

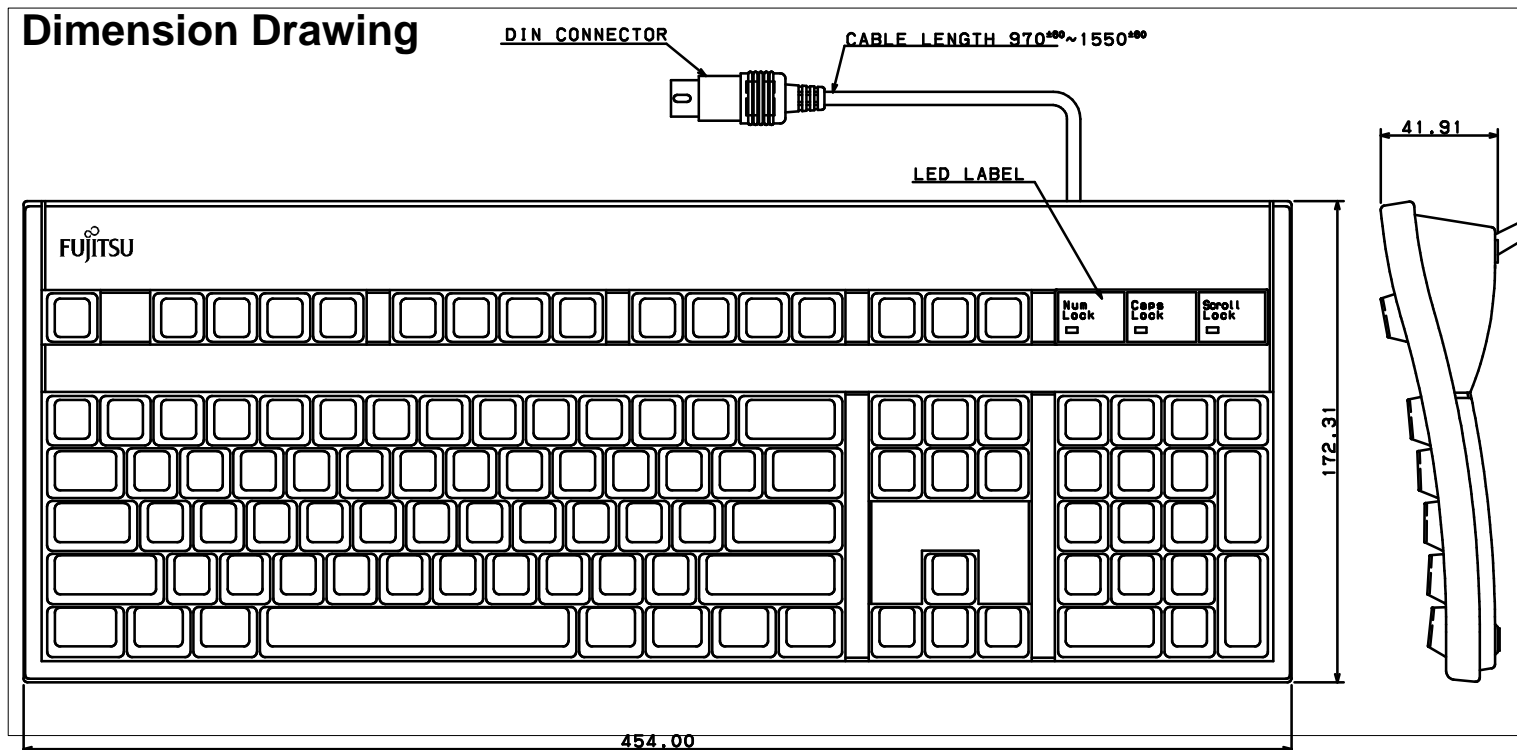
Features

- Supports Windows® 95 keyboard functions
- Fujitsu quality and reliability
- Curved keyswitch panel
- Low profile, attractive design
- Full-travel 3.8 mm keystroke, 55 gram operating force, 20 gram tactile response
- Fujitsu label optional
- 104 /105 key layouts
- XT™, AT™, PS/2 compatible
- FCC class B, UL, and CSA approved

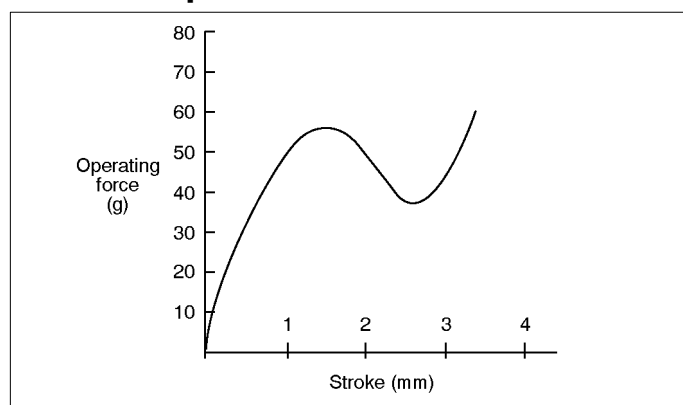
Specifications

Item		Specification
Mechanical	Operating Force	55 g \pm 25 g
	Stroke	3.8 mm \pm 0.5 mm (0.150 \pm 0.020 in.)
	Tactile	20 g typ.
	Operating Life	10 M operations minimum
	Number of Keys	U.S.: 104 keys, Others: 105 keys
	Keytop	Shape: Rectangular/cylindrical Form: Curve sculptured
	Tilt	2 levels
Environment	Operating Temperature	10° to 50°C
	Storage Temperature	-10 to 60°C
	Humidity	90% RH max. at 40°C max., inversely proportional change to 50% RH at 60°C
Electrical	Contact Resistance	1 K Ω max.
	Power Requirement	5 \pm 0.25 VDC, 100 mA max.
	Interlock	F-key roll over
	Repeat	All keys (AT mode: repeating rate specified by command)
Interface	Data Transmission	serial transmission (synchronous system)
	Data Format	AT Mode: 11 bit (1 start + 8 data + 1 parity + 1 stop)
		XT Mode: 9 bit (1 start + 8 data)
	Connector	5-pin DIN/6-pin mini DIN

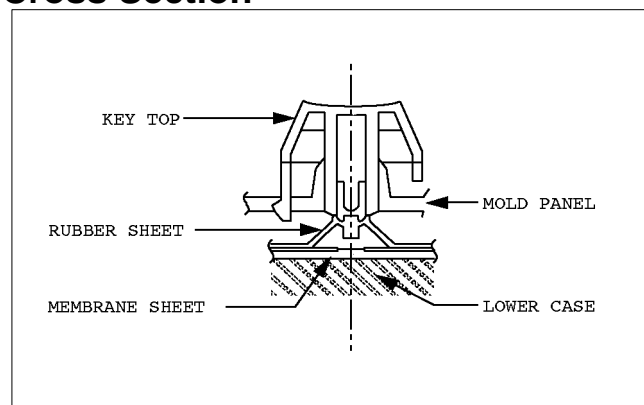
Dimension Drawing



Force Displacement Curve



Cross Section



Ordering Information:

FKB8725-301 Standard DIN plug, plain box
 FKB8725-601 Std DIN plug, Fujitsu logo, retail box

FKB8725-401 Mini DIN plug, plain box
 FKB8725-3XX Foreign versions – call for details

AT and XT are trademarks of International Business Machines Corporation

Fujitsu Microelectronics, Inc.
 Electronic Component Sales
 3545 North First Street
 San Jose, CA 95134-1804
 Tel: (408) 922-9000
 FAX: (408) 428-0640

Sales Offices:
 Santa Clara, California
 (408) 982-1820

Irvine, California
 (714) 724-1634

Chicago, Illinois
 (708) 250-7030

Boston, Massachusetts
 (617) 487-0029

Atlanta, Georgia
 (404) 242-5862

Dallas, Texas
 (214) 881-2980

In Canada call:
 (905) 602-5454